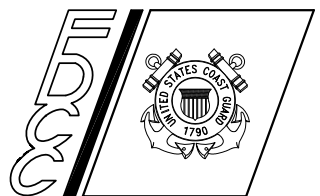


**FINAL D/B RFP
 CONCEPTUAL DESIGN**
 12/08/2010

**U. S. COAST GUARD
 FACILITIES DESIGN &
 CONSTRUCTION CENTER**



FDCC
 5505 ROBIN HOOD ROAD
 NORFOLK, VIRGINIA 23513-2431

ISSUE		
MARK	DATE	DESCRIPTION

A/E PROJECT NO: 002-10069-013
 CAD FILE NAME: A60L2001E100.dwg
 DESIGNED BY: FLE
 DRAWN BY: FLE
 EDITED BY:
 CHECKED BY: YW

SCALE: 1/16" = 1'-0" PLOT SCALE: 1 : 1

SHEET TITLE

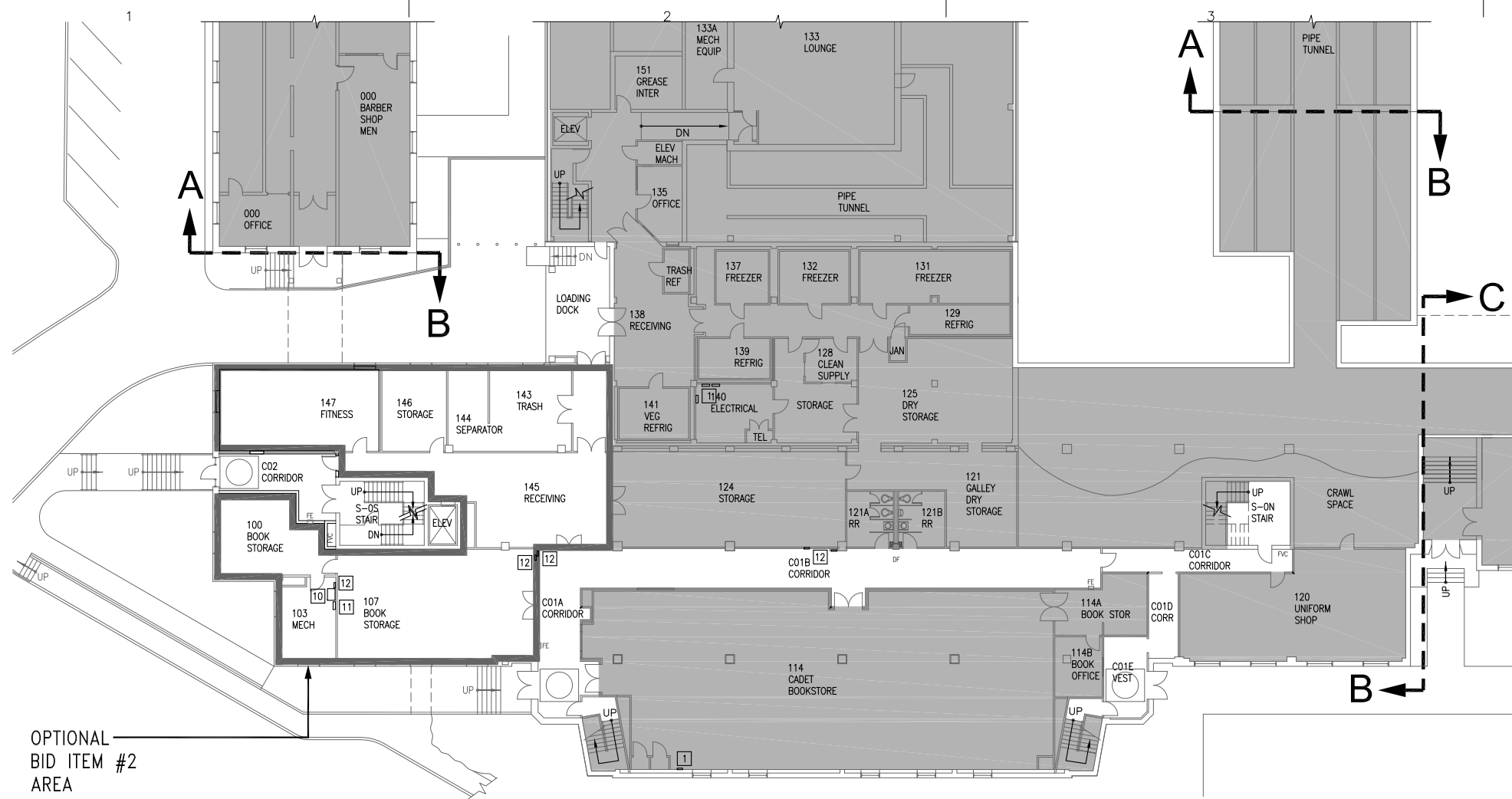
**MID-LIFE RENOVATIONS PHASE III
 US COAST GUARD ACADEMY
 NEW LONDON CT
 CHASE HALL BARRACKS
 ELECTRICAL
 BASEMENT FLOOR PLANS**

REVIEWED BY:	REVIEWED BY:	REVIEWED BY:
PROJECT ENG.	BRANCH CHIEF	TECH. DIRECTOR

APPROVING OFFICER	DATE
-------------------	------

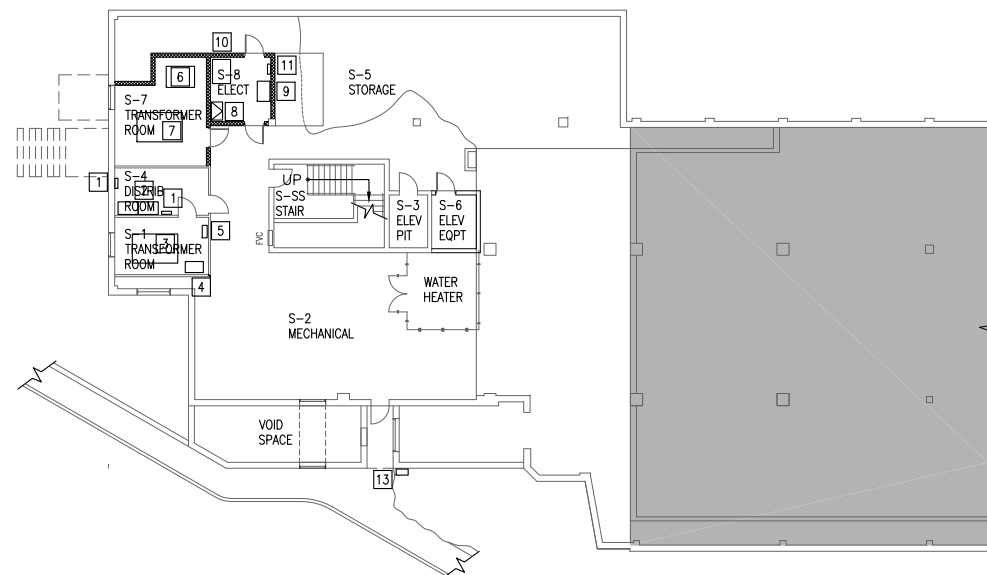
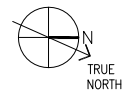
PROJECT NUMBER	DRAWING NUMBER
60-L2001	A60L2001E100

DISCIPLINE/SHT NO	SHEET 75 OF 81
E100	



OPTIONAL
 BID ITEM #2
 AREA

**CHASE HALL - ANNEX B
 BASEMENT FLOOR PLAN**
 SCALE: 1/16" = 1'-0"



**CHASE HALL - ANNEX B
 SUB-BASEMENT FLOOR PLAN**
 SCALE: 1/16" = 1'-0"



KEYED NOTES:

- 1 EXISTING PANELBOARD(S) TO REMAIN.
- 2 EXISTING MAIN SWITCHBOARD.
- 3 EXISTING DRY TYPE SERVICE TRANSFORMER.
- 4 EXISTING VACUUM INTERRUPTER SWITCH.
- 5 EXISTING LOADBREAK SWITCH.
- 6 NEW LOAD INTERRUPTING SWITCH.
- 7 NEW DRY TYPE SERVICE TRANSFORMER.
- 8 NEW MANUAL TRANSFER SWITCH.
- 9 NEW MAIN SWITCHBOARD.
- 10 NEW DRY TYPE DISTRIBUTION TRANSFORMER.
- 11 NEW PANELBOARD.
- 12 EXISTING PANELBOARD(S) TO BE REMOVED AND REPLACED WITH NEW.
- 13 NEW PORTABLE GENERATOR CONNECTION ASSEMBLY.

GENERAL NOTES:

1. ANY EQUIPMENT AND CONDUIT SIZING INDICATED ON THESE RFP CONCEPTUAL DRAWINGS IS ONLY APPROXIMATE/NOTIONAL, AND SHOULD NOT BE RELIED UPON BY THE PROPOSING CONTRACTOR. CONTRACTOR SHALL DESIGN AND DETERMINE THE ACTUAL SIZES FOR ALL EQUIPMENT AND CONDUIT IN CONFORMANCE WITH THE STANDARDS AND SPECIFICATIONS INCLUDED WITH THIS RFP.
2. THESE CONCEPT PLANS ARE BASED ON RECORD DRAWINGS AND FIELD OBSERVATIONS AND INCLUDE A DEPICTION FOR A GENERAL APPROACH FOR CONDUIT ROUTING AND EQUIPMENT PLACEMENT. CONTRACTOR SHALL FIELD VERIFY ALL EXISTING CONDITIONS FOR PROPOSED ROUTINGS AND EQUIPMENT LOCATIONS.

LEGEND

SHADING INDICATES AREAS NOT IN CONTRACT WITH POTENTIAL EXCEPTION OF RELATED UTILITY WORK

8' 0' 8' 16'
 SCALE: 1/16" = 1'-0"

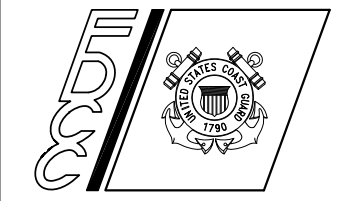
M:\SCHMITT\Q:\CT\NEW_LONDON_ACADEMY\60-L2001-CHASE_HALL_PHASE_III\60-L2001-CHASE_HALL_PHASE_III\CONTRACTING_BRIDGING_DRAWINGS\CAD\60L2001E100.DWG LAYOUT: 22X34 1/07/2011 9:01AM DIMSCALE: 192 R17.2

M:\SCHMITT\02\CT\NEW_LONDON\ACADEMY\60-L2001-CHASE_HALL_PHASE_III\60-L2001-D-B_PHASE\CONTRACTING_BRIDGING_DOCS\DRAWINGS\CAD\A60L2001E101.DWG LAYOUT: 22X34 1/07/2011 9:07AM DIMSCALE: 1 R17.2

CONSULTANTS

FINAL D/B RFP
 CONCEPTUAL DESIGN
 12/08/2010

**U. S. COAST GUARD
 FACILITIES DESIGN &
 CONSTRUCTION CENTER**



FDCC
 5505 ROBIN HOOD ROAD
 NORFOLK, VIRGINIA 23513-2431

ISSUE		
MARK	DATE	DESCRIPTION

A/E PROJECT NO: 002-10069-013
 CAD FILE NAME: A60L2001E101.dwg
 DESIGNED BY: FLE
 DRAWN BY: FLE
 EDITED BY:
 CHECKED BY: YW

SCALE: 1/16" = 1'-0" PLOT SCALE: 1 : 1

SHEET TITLE

**MID-LIFE RENOVATIONS PHASE III
 US COAST GUARD ACADEMY
 NEW LONDON CT
 CHASE HALL BARRACKS
 ELECTRICAL
 FIRST FLOOR PLAN**

REVIEWED BY:	REVIEWED BY:	REVIEWED BY:
PROJECT ENG.	BRANCH CHIEF	TECH. DIRECTOR

APPROVING OFFICER _____ DATE _____

PROJECT NUMBER	DRAWING NUMBER
60-L2001	A60L2001E101
DISCIPLINE/SHT NO	SHEET 76 OF 81
E101	

GENERAL NOTES:

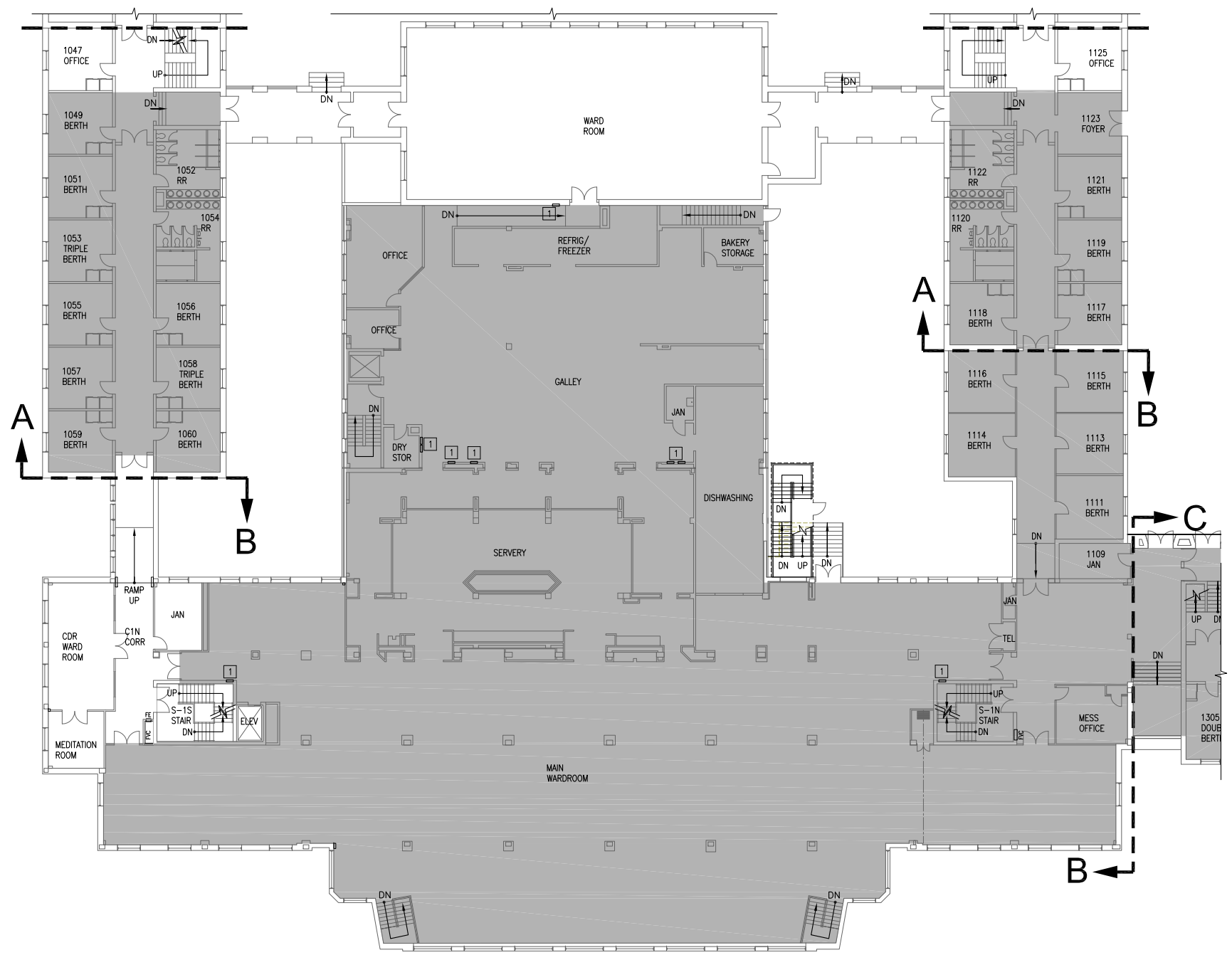
1. ANY EQUIPMENT AND CONDUIT SIZING INDICATED ON THESE RFP CONCEPTUAL DRAWINGS IS ONLY APPROXIMATE/NOTIONAL, AND SHOULD NOT BE RELIED UPON BY THE PROPOSING CONTRACTOR. CONTRACTOR SHALL DESIGN AND DETERMINE THE ACTUAL SIZES FOR ALL EQUIPMENT AND CONDUIT IN CONFORMANCE WITH THE STANDARDS AND SPECIFICATIONS INCLUDED WITH THIS RFP.
2. THESE CONCEPT PLANS ARE BASED ON RECORD DRAWINGS AND FIELD OBSERVATIONS AND INCLUDE A DEPICTION FOR A GENERAL APPROACH FOR CONDUIT ROUTING AND EQUIPMENT PLACEMENT. CONTRACTOR SHALL FIELD VERIFY ALL EXISTING CONDITIONS FOR PROPOSED ROUTINGS AND EQUIPMENT LOCATIONS.

LEGEND

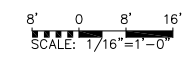
SHADING INDICATES AREAS NOT IN CONTRACT WITH POTENTIAL EXCEPTION OF RELATED UTILITY WORK

KEYED NOTES:

- 1 EXISTING PANELBOARD(S) TO REMAIN.



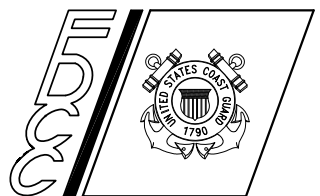
**CHASE HALL - ANNEX B
 FIRST FLOOR PLAN**
 SCALE: 1/16" = 1'-0"



CONSULTANTS

**FINAL D/B RFP
CONCEPTUAL DESIGN**
12/08/2010

**U. S. COAST GUARD
FACILITIES DESIGN &
CONSTRUCTION CENTER**



FDCC
5505 ROBIN HOOD ROAD
NORFOLK, VIRGINIA 23513-2431

ISSUE

MARK	DATE	DESCRIPTION

A/E PROJECT NO: 002-10069-013
CAD FILE NAME: A60L9002E601.dwg
DESIGNED BY: FLE
DRAWN BY: FLE
EDITED BY:
CHECKED BY: YW

SCALE: 1/16" = 1'-0" PLOT SCALE: 1 : 1

SHEET TITLE

**MID-LIFE RENOVATIONS PHASE III
US COAST GUARD ACADEMY**
NEW LONDON CT
CHASE HALL BARRACKS
ELECTRICAL
ONE-LINE DIAGRAM

REVIEWED BY:	REVIEWED BY:	REVIEWED BY:
--------------	--------------	--------------

PROJECT ENG.	BRANCH CHIEF	TECH. DIRECTOR
--------------	--------------	----------------

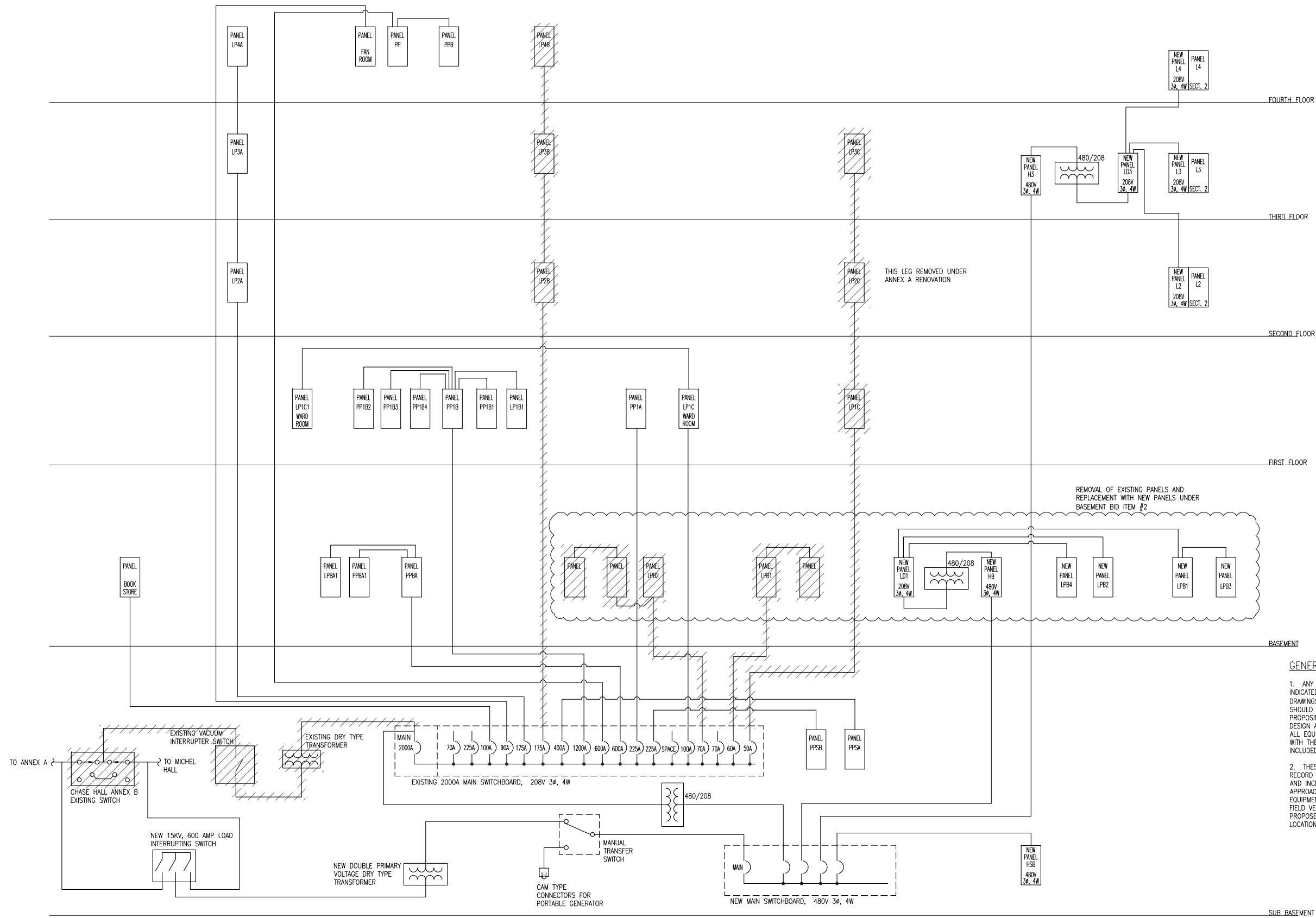
APPROVING OFFICER	DATE
-------------------	------

PROJECT NUMBER	DRAWING NUMBER
----------------	----------------

60-L2001	A60L2001E601
----------	--------------

DISCIPLINE/SHT NO	SHEET 80 OF 81
-------------------	----------------

E601



GENERAL NOTES:

- ANY EQUIPMENT AND CONDUIT SIZING INDICATED ON THESE RFP CONCEPTUAL DRAWINGS IS ONLY APPROXIMATE/NOTIONAL, AND SHOULD NOT BE RELIED UPON BY THE PROPOSING CONTRACTOR. CONTRACTOR SHALL DESIGN AND DETERMINE THE ACTUAL SIZES FOR ALL EQUIPMENT AND CONDUIT IN CONFORMANCE WITH THE STANDARDS AND SPECIFICATIONS INCLUDED WITH THIS RFP.
- THESE CONCEPT PLANS ARE BASED ON RECORD DRAWINGS AND FIELD OBSERVATIONS AND INCLUDE A DEPICTION FOR A GENERAL APPROACH FOR CONDUIT ROUTING AND EQUIPMENT PLACEMENT. CONTRACTOR SHALL FIELD VERIFY ALL EXISTING CONDITIONS FOR PROPOSED ROUTINGS AND EQUIPMENT LOCATIONS.

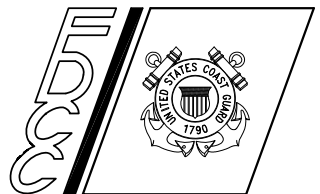
ONE-LINE DIAGRAM
SCALE: NONE

M:\SCHMITT\Q:\CT\NEW_LONDON_ACADEMY\60-L2001-CHASE_HALL_PHASE_III\60-L2001-CHASE_HALL_PHASE_III\CONTRACTING_BRIDGING_DCGS\DRAWINGS\CAD\60L2001E601.DWG_LAYOUT-22X34 1/07/2011 9:35AM DIMSCALE: 48 RT7.2

CONSULTANTS

**FINAL D/B RFP
CONCEPTUAL DESIGN**
12/08/2010

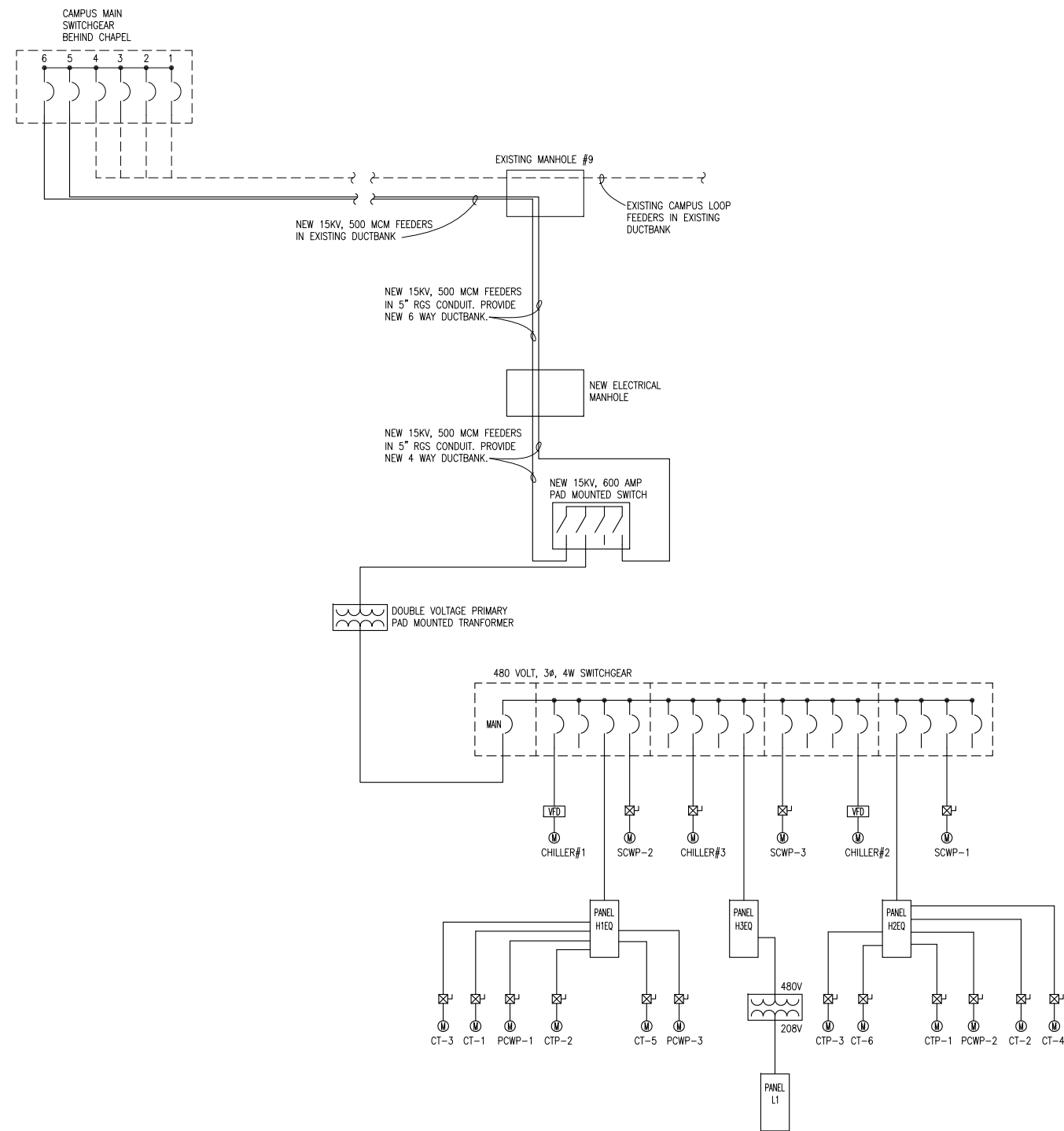
**U. S. COAST GUARD
FACILITIES DESIGN &
CONSTRUCTION CENTER**



FDCC
5505 ROBIN HOOD ROAD
NORFOLK, VIRGINIA 23513-2431

GENERAL NOTES:

1. ANY EQUIPMENT AND CONDUIT SIZING INDICATED ON THESE RFP CONCEPTUAL DRAWINGS IS ONLY APPROXIMATE/NOTIONAL, AND SHOULD NOT BE RELIED UPON BY THE PROPOSING CONTRACTOR. CONTRACTOR SHALL DESIGN AND DETERMINE THE ACTUAL SIZES FOR ALL EQUIPMENT AND CONDUIT IN CONFORMANCE WITH THE STANDARDS AND SPECIFICATIONS INCLUDED WITH THIS RFP.
2. THESE CONCEPT PLANS ARE BASED ON RECORD DRAWINGS AND FIELD OBSERVATIONS AND INCLUDE A DEPICTION FOR A GENERAL APPROACH FOR CONDUIT ROUTING AND EQUIPMENT PLACEMENT. CONTRACTOR SHALL FIELD VERIFY ALL EXISTING CONDITIONS FOR PROPOSED ROUTINGS AND EQUIPMENT LOCATIONS.



ONE-LINE DIAGRAM
SCALE: NONE

ISSUE		
MARK	DATE	DESCRIPTION

A/E PROJECT NO: 002-10069-013
CAD FILE NAME: A60L9002E602.dwg
DESIGNED BY: FLE
DRAWN BY: FLE
EDITED BY:
CHECKED BY: YW

SCALE: 1/16" = 1'-0" PLOT SCALE: 1 : 1

SHEET TITLE
MID-LIFE RENOVATIONS PHASE III
US COAST GUARD ACADEMY
NEW LONDON CT
CHILLER PLANT
ELECTRICAL
ONE-LINE DIAGRAM

REVIEWED BY:	REVIEWED BY:	REVIEWED BY:
PROJECT ENG.	BRANCH CHIEF	TECH. DIRECTOR

APPROVING OFFICER	DATE
-------------------	------

PROJECT NUMBER	DRAWING NUMBER
60-L2001	A60L2001E602

DISCIPLINE/SHT NO	SHEET 81 OF 81
E602	