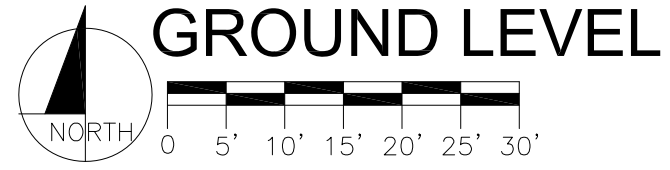
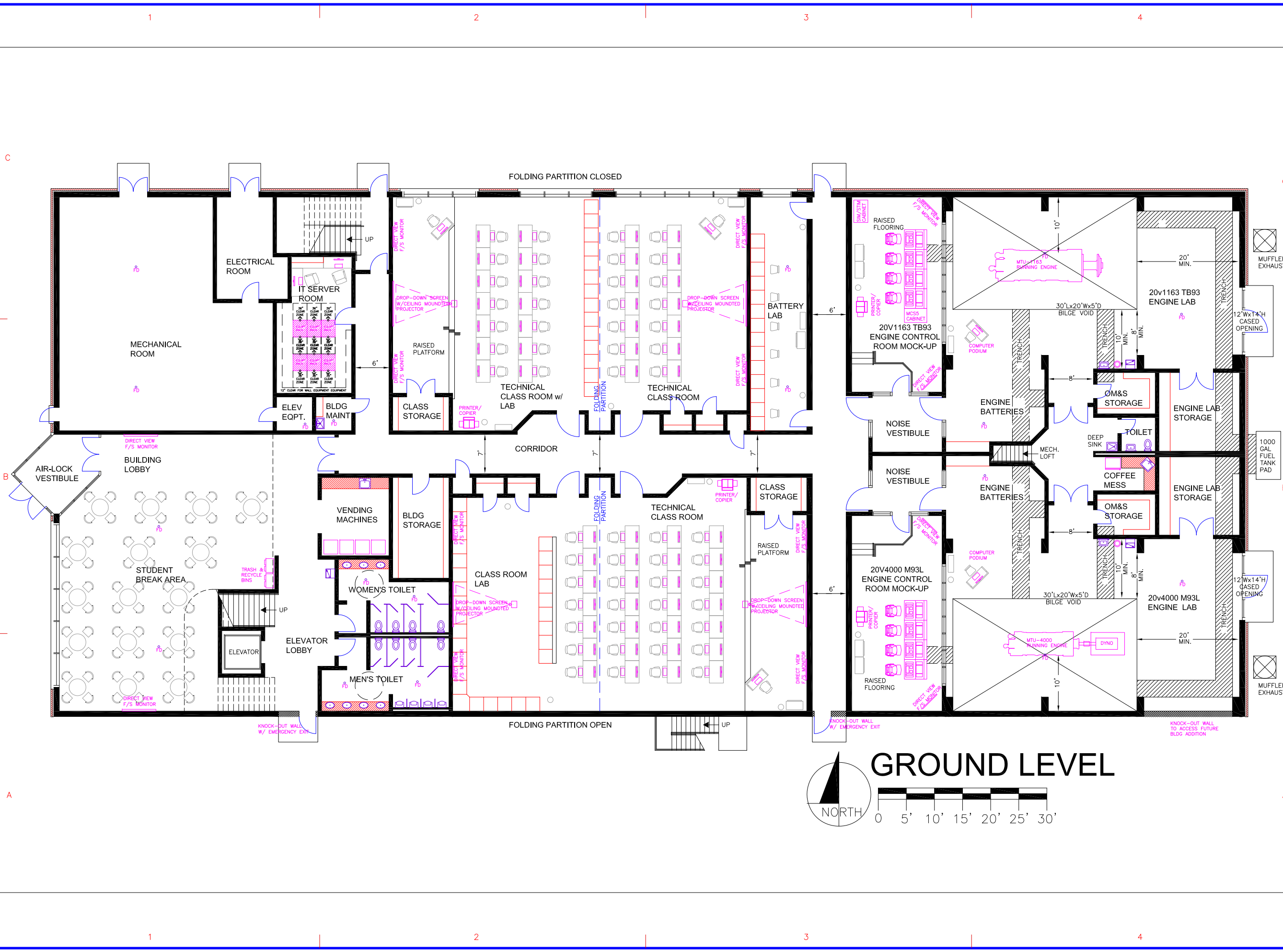


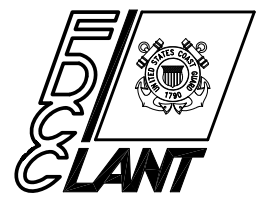
G:\CHANCES\PA\VA\YORKTOWN\75-2724117.DWG LAYOUT: A001 11/07/2011 4:35PM DIMSCALE: 1/8"=1'-0"



RFP
OCT 2011

CONSULTANTS

**U. S. COAST GUARD
FACILITIES DESIGN &
CONSTRUCTION CENTER**



5505 ROBIN HOOD ROAD
NORFOLK, VIRGINIA 23513-2431

ISSUE		
MARK	DATE	DESCRIPTION
△	11/02/11	DATE AND HEADER REVISED

A/E PROJECT NO:
CAD FILE NAME:
DESIGNED BY:
DRAWN BY:
EDITED BY:
CHECKED BY:

SCALE: AS SHOWN PLOT SCALE: 1 : 1

SHEET TITLE
CONST DEEPWATER TEW BUILDING
CG TRACEN YORKTOWN
Yorktown VA
TRACEN YORKTOWN
ARCHITECTURE
ADJACENCY CONCEPT GROUND LEVEL

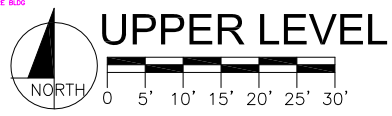
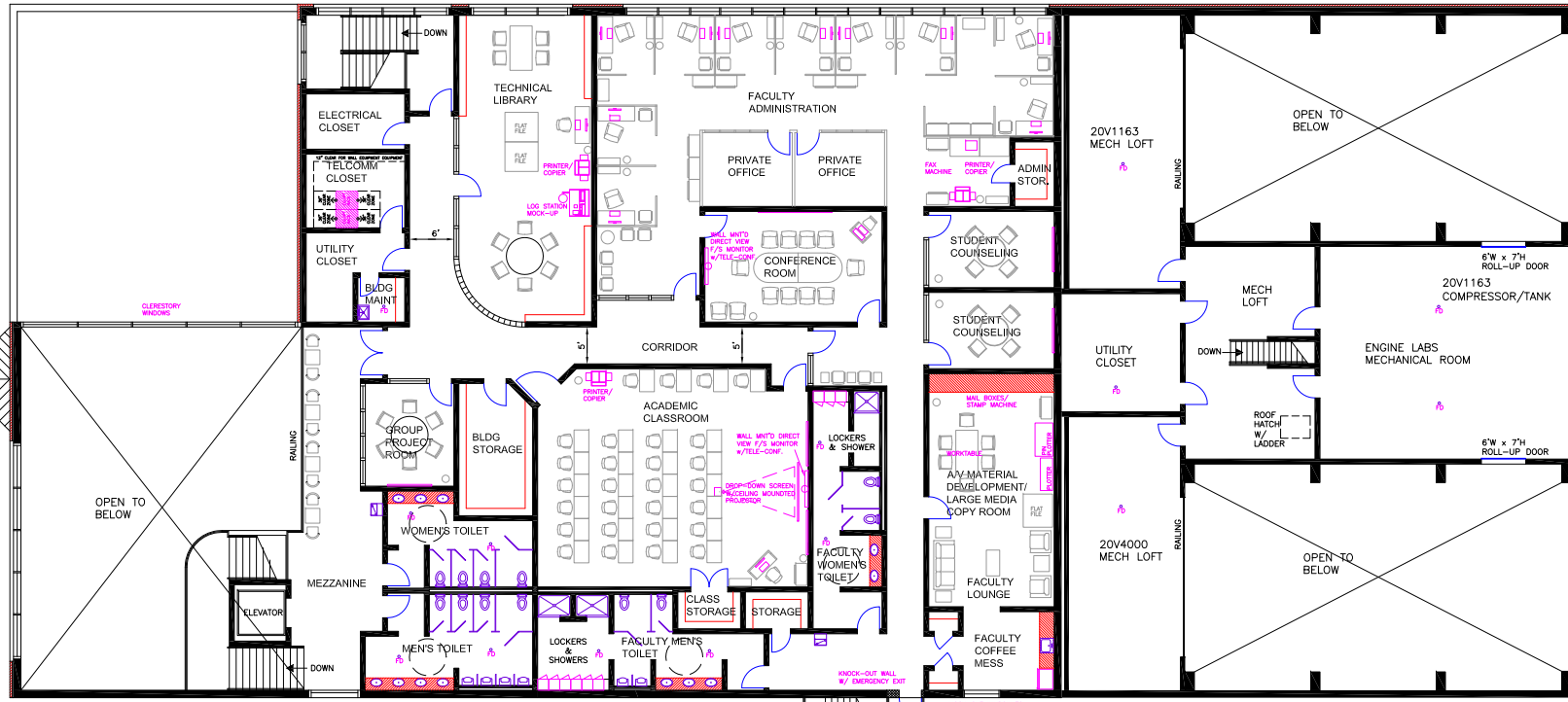
REVIEWED BY:	REVIEWED BY:	REVIEWED BY:
PROJECT ENG.	BRANCH CHIEF	TECH. DIRECTOR


APPROVING OFFICER _____ DATE _____

PROJECT NUMBER	DRAWING NUMBER
75-2724117	A02724117001

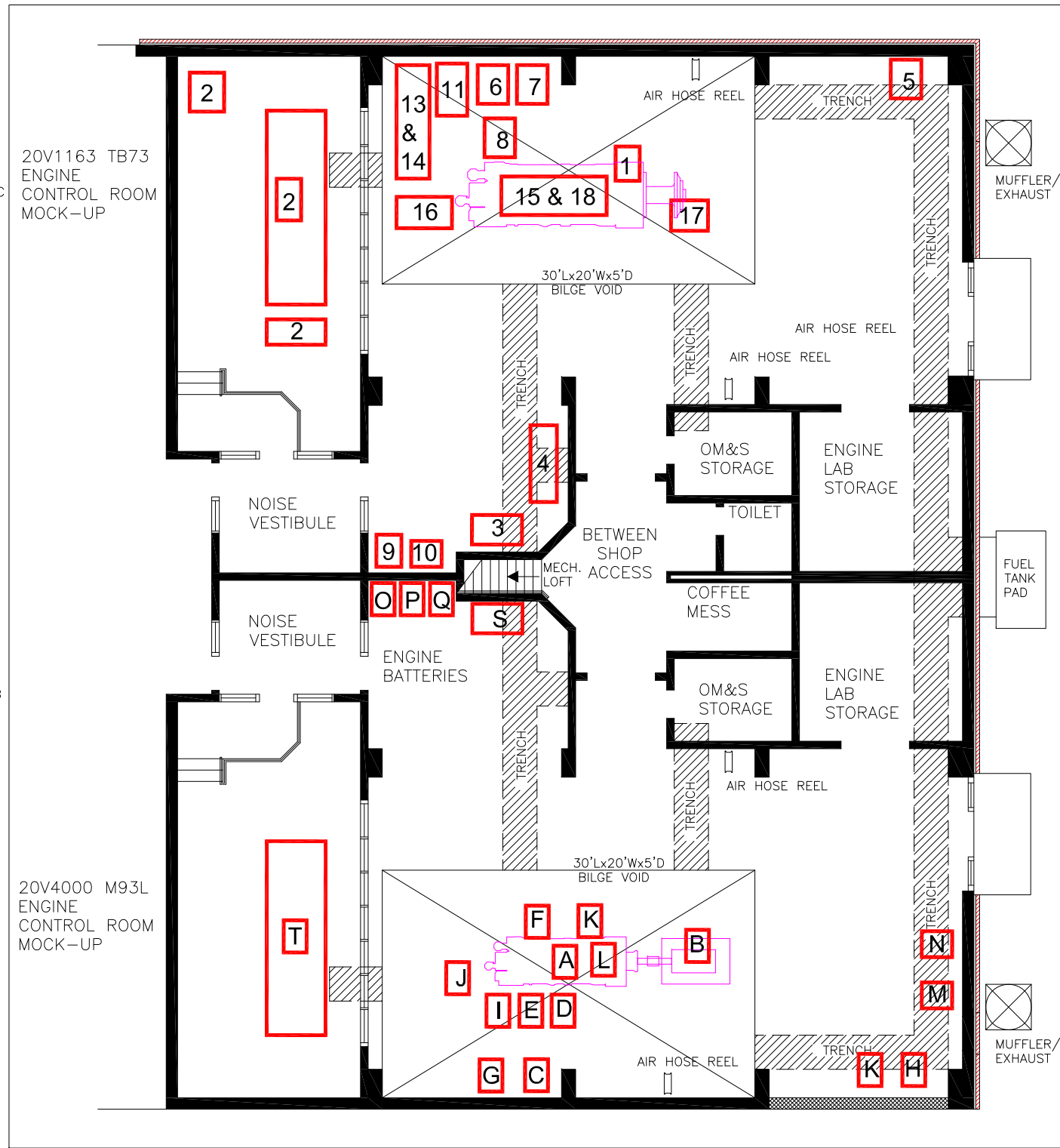
DISCIPLINE/SHT NO	SHEET	OF
A001	5	8

C:\CHANCEP\VA\YORKTOWN\75-2724117 DEPTR. ENG. & WPRG. TRAINING FACILITY\BPA\CONTRACTING BRIDGING GROSS\MENUMENTS\3\CD_CONTENTS\A02724117A002.DWG LAYOUT: A002 11/07/2011 4:55PM DIMSCALE: 1:1/17.2



CONSULTANTS		
RFP OCT 2011		
U. S. COAST GUARD FACILITIES DESIGN & CONSTRUCTION CENTER		
		
5505 ROBN HOOD ROAD NORFOLK, VIRGINIA 23513-2431		
ISSUE		
MARK	DATE	DESCRIPTION
Δ	11/02/11	DATE AND HEADER REVISED
A/E PROJECT NO:		
CAD FILE NAME:		
DESIGNED BY:		
DRAWN BY:		
EDITED BY:		
CHECKED BY:		
SCALE: AS SHOWN		PLOT SCALE: 1 : 1
SHEET TITLE		
CONST DEEPWATER TEW BUILDING CG TRACEN YORKTOWN Yorktown, VA TRACEN YORKTOWN ARCHITECTURE ADJACENCY CONCEPT UPPER LEVEL Δ		
REVIEWED BY:	REVIEWED BY:	REVIEWED BY:
PROJECT ENG.	BRANCH CHIEF	TECH. DIRECTOR
APPROVING OFFICER		DATE
PROJECT NUMBER	DRAWING NUMBER	
75-2724117	A02724117A002	
DISCIPLINE/SHT NO	SHEET 6 OF 8	
A002		

G:\CHANCE\117A\YORKTOWN\75-2724117 DPWTR ENG & WPNS TRAINING FACILITY RFP CONTRACTING BRIDGING DOCS\AMENDMENTS\#3\CD_CONTENTS\752724117A003.DWG LAYOUT: A003 11/07/2011 4:57PM DIMSCALE: 1 R17.2



MTU 20V1163								
Item No.	Piece of Equipment	Power	Connection	Supply		Install		Notes
				Govt	GC	Govt	GC	
1	MTU 20V1163 TB73 Engine	N/A	Dwg 750-WMSL-231-002	X			X	1
2	Propulsion Control Console (including Sim /Stim and MCS5 devices with cabinets)	24 VDC and 120 VAC	Via Breaker Panel	X			X	12
3	Lab 24 VDC Power Supply	Input: 440 VAC 3Phase or 120 VAC Output: 24 VDC	Via breaker Panel		X		X	2, 11
4	Lab 24 VDC Power Dist Panel	24 VDC			X		X	11
5	Lab Primary Fuel Filters (Racor 3 stage)	N/A	1.5 inch		X		X	11
6	Jacket Water Heater System (incl. associated piping and controls)	440V 3 Phase	4" and 5"; Dwg 750-WMSL-532-001, 750-WMSL-532-002	X			X	3, 11
7	Pre-Lube Pump and Priming pump control box	440V 3 Phase	MTU Dwg's 0011806001, 5105309361	X			X	4, 11
8	Engine Pre Lube Pump System (incl. associated piping and controls)	440V 3 Phase	MTU Dwg's 0011806001, 5105309361	X			X	4, 13
9	Breaker Panel	120 VAC			X		X	11
10	Breaker Panel	440V 3 Phase			X		X	11
11	Air Starter	Min 234 PSI	Min 234 PSI, Flow Min 0.9m ³ Per MTU Specifications	X			X	
12	Starting Air System (including associated piping and controls)	440V 3 Phase			X		X	6, 14
13	Expansion Tank (20.003)	NA	MTU Dwg 580 200 00 00	X			X	11
14	Plate Core Coolant Heat Exchanger (20.378)	NA	MTU Dwg XZ58420000001	X			X	
15	Muffler/Exhaust/Inlet System	NA	MTU Dwg 584 002 23 14, 5830040009		X		X	6
16	Raw Water Piping	NA	8 inch; MTU Dwg's 5840031820, 5840031220, XZ58200000005, X00027671, X0027672		X		X	6
17	Fuel Inlet and Return	NA	1.5 inch		X		X	6
18	Engine Inlet Filters	NA	MTU Dwg 5830040009	X			X	

MTU 20V4000								
Item No.	Piece of Equipment	Power	Connection	Supply		Install		Notes
				Govt	GC	Govt	GC	
A	MTU 20V4000M93L Engine	N/A	MTU Drawing: 180.00010	X			X	7, 8
B	Waterbreak, Dynamometer	8,000-HP (5,967kW) Engine Dynamometer System		X			X	9, 10
C	Pre-Lube Oil Pump and Priming pump control box	440V 3 Phase	Hose; MTU Drawing: 180.00009	X			X	4
D	I/W heater	440V 3 Phase 9KW	Hose/Piping	X			X	3, 13
E	Fuel Filters Primary	NA	Inlet: 3/4" 154-WPC-541-301 (Rev 8); Sheet 3	X			X	
G	Expansion Tank	Installed on engine	NA	X			X	11
H	Fuel Booster pump	440V 3 Phase 1.2HP	Inlet: 1 1/2"; Outlet: 1 1/2" 154-WPC-541-301 (Rev 8); Sheet 3	X			X	12
I	Fuel Lines	NA	Inlet: 3/4"; Return: 1/2"; 154-WPC-541-301 (Rev 8); Sheet 3		X		X	6
J	Raw water	NA	Engine Inlet: 6"; Engine Outlet: 6"; Gearbox Inlet: 2"; Gearbox Outlet: 2"; 1021 GPM; 154-WPC-256-301 (Rev 1); Sheet 2		X		X	6
K	NFV Fuel filtering	440V 3 Phase 1HP	Inlet: 2"; Outlet: 1 1/2"; Water Drain: ? 154-WPC-541-301 (Rev 8); Sheet 5	X			X	
L	Exhaust	NA	Flange; 154-WPC-259-301 (Rev 5) Note: MTU has specified back pressure requirements		X		X	6
M	Inlet Booster Pump for Water Break	440V 3 Phase 2000 GPM	Hose/Piping Pending additional information		X		X	6
N	Outlet Booster Pump for Water Break	440V 3 Phase 2000 GPM	Hose/Piping Pending additional information		X		X	6
O	440VAC Panel	440VAC 3Phase			X		X	
P	120VAC Panel	120VAC			X		X	
Q	24VDC Panel	24VDC			X		X	2
R	Pre-Lube Pump and Priming pump control box			X			X	4
S	Engine Batteries	24 VDC Power Supply and Battery Rack	Via breaker Panel 154-WPC-313-301 (revision 1)	X			X	15, 16, 17
T	ENGINE CONTROL ROOM MOCK-UP	NA	TBD	X			X	12

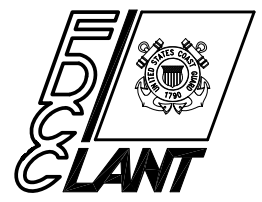
Notes

1	Weight: 25 tons. L: 17'-6", W: 6'-3", H: 11'-6" Heat Dissipation: 4300kW.	5	Air compressor system shall be located at 2nd floor Engine Labs Mechanical Room.	9	See RFP Specification 01158, Paragraph 1.11.8. Heat dissipation of the Waterbreak Dynamometer and for engine: 30.5 MBTU.	11	Wall mounted equipment/accessories.	15	24VDC System for MTU control will originate from power supply/breaker panel and route through trenching to 20V4000 engine, local controls and monitoring systems, and remote controls and monitoring systems.
2	24VDC System for MTU control will originate from power supply/breaker panel and route through trenching to 20V1163 engine, local controls and monitoring systems, and remote controls and monitoring systems.	6	See RFP Specification 01158, Paragraph 1.11.8	10	Heat dissipation: 4,300KW	12	Floor mounted equipment/accessories.	16	Engine Starting: Install appropriate number of Odyssey 1225 CCA 100 a/h batteries in series-parallel (24VDC) for minimum of five engine starts. Starter Charger: Charles Marine Model 9Q-24255HQ-A (25AMP)
3	Diesel Jacket Water Heaters: Install wall mounted jacket water heaters for each diesel engine. Provide manual open sight vent to purge air before starting jacket water heater. Provide drain piping from jacket water heater manual and relief vents to the	7	Weight: 13.2 Tons, L: 13'-2", W: 5'-0", H: 8'-0", Heat Dissipation: 4300kW, Coolant capacity 700L (154 Gallons), Expansion tank 95L (21 Gallons)	9	See RFP Specification 01158, Paragraph 1.11.8. Heat dissipation of the Waterbreak Dynamometer and for engine: 30.5 MBTU.	13	Engine frame mounted equipment/accessories.	17	Engine Control: Install two Odyssey 1225 CCA 100 a/h batteries in series (24VDC) to supply MTU engine control and monitoring system. Control Charger/Power Supply: Charles Marine Model PT-24-95U (95AMP)
4	Install pre-lube pumps for each diesel engine. Pumps shall be mounted to provide unrestricted access to engines during engine teardown without removing the pre-lube pump and piping.	8	Heat dissipation: 3350KW(12,00THP) Heat dissipation by engine, coolant with oil heat, with charge-air heat.	10	Heat dissipation: 4,300KW	14	Air compressor system located at 2nd floor Equipment Room.		

CONSULTANTS

OCT RFP 2011

**U. S. COAST GUARD
FACILITIES DESIGN &
CONSTRUCTION CENTER**



5505 ROBIN HOOD ROAD
NORFOLK, VIRGINIA 23513-2431

ISSUE		
MARK	DATE	DESCRIPTION
△	11/02/11	DATE AND HEADER REVISED

A/E PROJECT NO:
CAD FILE NAME:
DESIGNED BY:
DRAWN BY:
EDITED BY:
CHECKED BY:

SCALE: AS SHOWN PLOT SCALE: 1 : 1

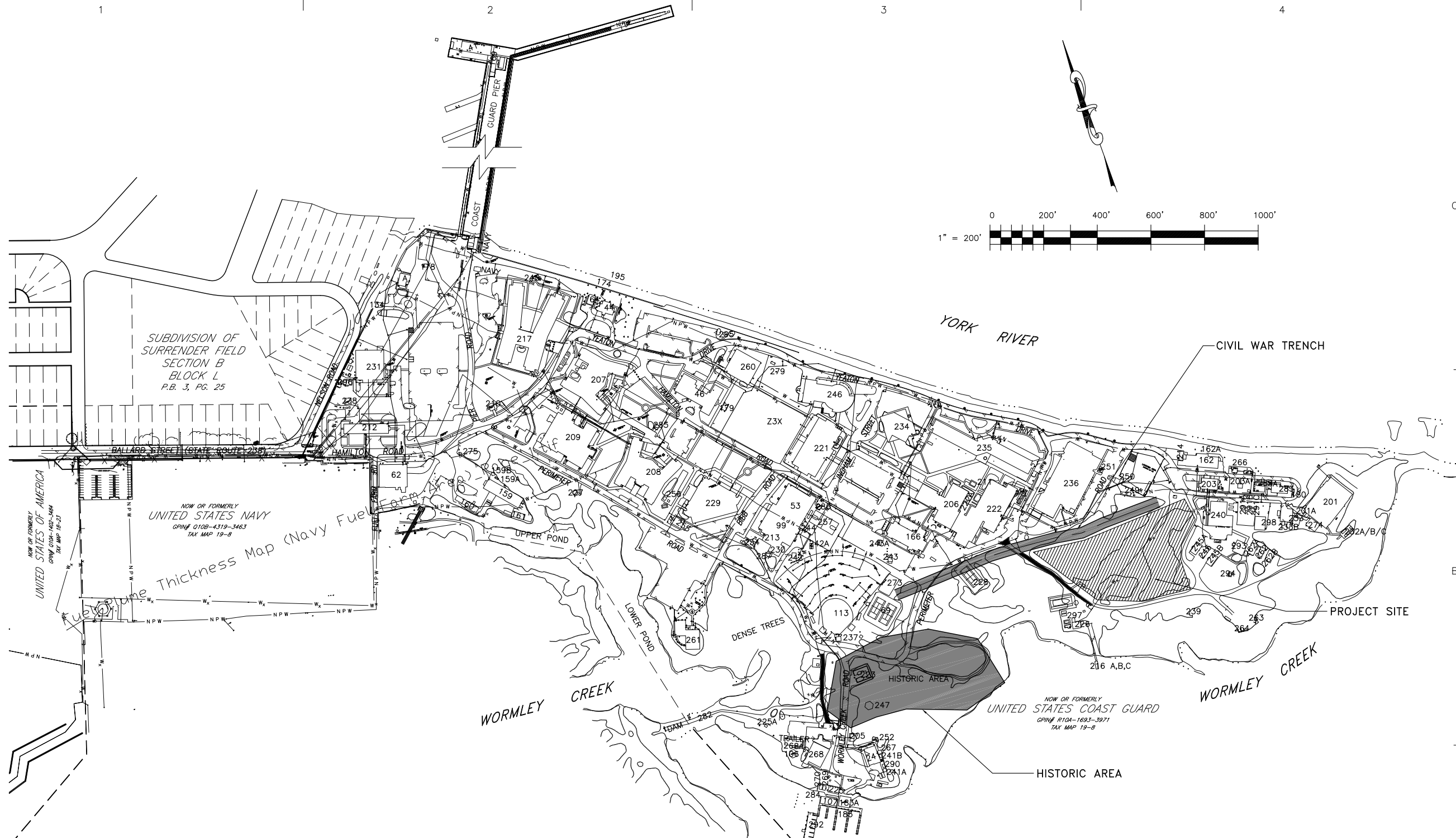
SHEET TITLE
**CONST DEEPWATER TEW BUILDING
CG TRACEN YORKTOWN
Yorktown VA**
**TRACEN YORKTOWN
ARCHITECTURE
ENGINE LABS EQUIPMENT LAYOUT**

REVIEWED BY:	REVIEWED BY:	REVIEWED BY:
PROJECT ENG.	BRANCH CHIEF	TECH. DIRECTOR

APPROVING OFFICER _____ DATE _____

PROJECT NUMBER: **75-2724117** DRAWING NUMBER: **A02724117A003**

DISCIPLINE/SHT NO: **A003** SHEET **7** OF **8**



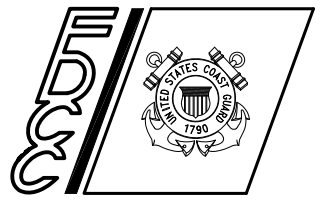
BUILDING KEY

13	XO'S QUARTERS	174	SEAWALL	226	BUTLER HALL TRAINING FACILITY	250	ACETYLENE/OXYGEN STORAGE	287	MWR STORAGE SHED Z3X PARADE FIELD
41	FIRE PUMP STATION-WORMLEY POND(OFF BASE)	178	SEWAGE LIFT STATION #1	227	CUYAHOGA MEMORIAL	251	RADAR TOWER, MK-92	290	BFC HAZMAT STORAGE
44	MAIN PIER/A/LIFT STATION	179	FLAGPOLE 180 RANGE FLAG POLE	228	TENNIS COURT	252	SEWAGE LIFT STATION-WORMLEY	291	DC TRAINING AIDS
46	CO'S QUARTERS	182	NAVY SUBSTATION-FUEL FARM	229	CANFIELD HALL	254	AUTOMATED LIGHT HOUSE MOCK-UPS	292	FLOATING DOCK
53	KOREAN HALL	183	SMALL BOAT PIERS	230	INDOOR RACQUETBALL COURTS	255	BUOY PAD	293	RB-S SIMULATOR BLDG
62	GYMNASIUM/MWR	195	SHORELINE RIP-RAP	231	WAREHOUSE	256	MINOR AID LAB	294	NATON TRAINING TOWER
63	MAINTENANCE BUILDING	201	RANGE	232	AMMO/PYRO STORAGE BLDG/A,B,C	257	BASKETBALL COURT	295	THAYER HALL PAVILION
64	ABANDONED FILTRATION PLANT (NAVY)	203	FIRE FIGHTING SCHOOL	233	RANGE SHED/A/LIFT STATION/B/STORAGE SHED	258	RAW WATER CONTROL BLDG/A/5000 GAL TANK (OFF BASE)	296	BASE GENERATORS BLDG
69	CO'S GARAGE/GUEST QUARTERS	205	CAMPGROUND BATHHOUSE	234	PORT OF YORK/SR. STUDENT DINING	260	THAYER HALL/A/PARKING SHELTER	297	MARINE SAFETY TRAINING BOAT
74	TENNIS COURTS (2)	206	MARTIN HALL	235	CAIN HALL	261	CHAPEL/COUNSELLING CENTER/A/LIFT STATION	298	BFC BOAT GARAGE
76	WATER TANK 150,000 GAL (OFF BASE)	207	STEBEN HALL	236	TAYLOR HALL	262	MLE BOARDING PLATFORMS/A/B		PARKING LOTS #1, 2, 3, 4, 5, 6, 7, 8
99	GATE HOUSE	208	LINCOLN HALL	237	ATHLETIC FIELD STORAGE	263	SCRAP METALS BIN		PARKING LOTS #9, 10, 11, 12, 13, 14, 15
106	SWIMMING POOL	209	COAST GUARD DINING FACILITY	238	GAS STATION	264	LANDSCAPE MATERIALS BIN		PARKING LOTS #16, 17, 18, 19, 20, 21, 22, 23, 24, 25 284
107	PICNIC PAVILION	210	SEWAGE LIFT STATION #2	239	FITNESS TRAIL	266	DC WET TRAINER		
113	WORMLEY CREEK OFFICES/A/LIFT STA	211	ACETYLENE/OXYGEN STORAGE	240	VILLARREAL HALL	267	OIL/WATER SEPARATOR		
115	ATHLETIC FIELD	212	INT'L TRAINING DIV/SECURITY BLDG	241	BOAT MAINT. FACILITY	268	BFC SYSTEMS CENTER/A/TRAILERS		
134	DEEP WELL (NAVY)	213	MWR WEIGHT ROOM	241A	PAINT STORAGE	269	BFC STORAGE		
138	XO'S GARAGE	214	OUTDOOR REC STORAGE	241B	COMPRESSOR STORAGE BLDG	270	MWR STORAGE		
159	FIRE PUMP STATION	216	SMALL BOAT RAMP	242	QM WEST SIGNAL SHACK/A/FLAGPOLE	273	SAND VOLLEYBALL PIT		
160	CARPENTER SHOP/A/LIFT STATION	217	LAFAYETTE HALL	243	QM EAST SIGNAL SHACK/A/FLAGPOLE	274	SMALL ARMS INSTRUCTOR BLDG.		
161	HAZARDOUS WASTE STORAGE	221	HAMILTON HALL	244	BOILER SHED (GYM/POOL)	275	VARIABLE MESSAGE SIGN		
162	ROAD & GROUNDS	222	ELBERT HALL	245	MLE BOARDING PLATFORMS & BLDG/A/B	279	SALUTING BATTERY		
166	AUTO HOBBY SHOP/A/LIFT STATION	222A	ELBERT HALL STUDENT BREAK AREA	246	CRAIK MEDICAL/DENTAL CENTER	282	DAM AT LOWER POND		
168	WASHINGTON AUD/E CLUB/A/LIFT STA	223	HISTORICAL GRAVE SITE	247	PICNIC PAVILION	283	SMOKE HOUSE (GAS)/A/TRAINING BLDG		
169	MORRO BAY STORAGE	225	BOATSWAIN'S MATE STORAGE	248	COMMS ANTENNA CONTROL BLDG	285	SMOKING SHELTER, LINCOLN		
		225A	PYRO STORAGE BLDG	249	MAIN SEWAGE LIFT STATION-YORK COUNTY	286	SMOKING SHELTER, GYM		

CONSULTANTS

RFP DRAWINGS
OCT 2011

U. S. COAST GUARD
FACILITIES DESIGN &
CONSTRUCTION CENTER



5505 ROBIN HOOD ROAD SUITE K
NORFOLK, VIRGINIA 23513-2431

ISSUE		
MARK	DATE	DESCRIPTION
△	11/02/11	DATE AND HEADER REVISED

A/E PROJECT NO:
CAD FILE NAME: 752724117C100.dwg
DESIGNED BY:
DRAWN BY:
EDITED BY:
CHECKED BY:

SCALE: 1"=200' PLOT SCALE: 1 : 1

SHEET TITLE
Const Deepwater TEW Building
CG TRACEN YORKTOWN
Yorktown VA
TRACEN YORKTOWN
CIVIL
OVERALL LAYOUT

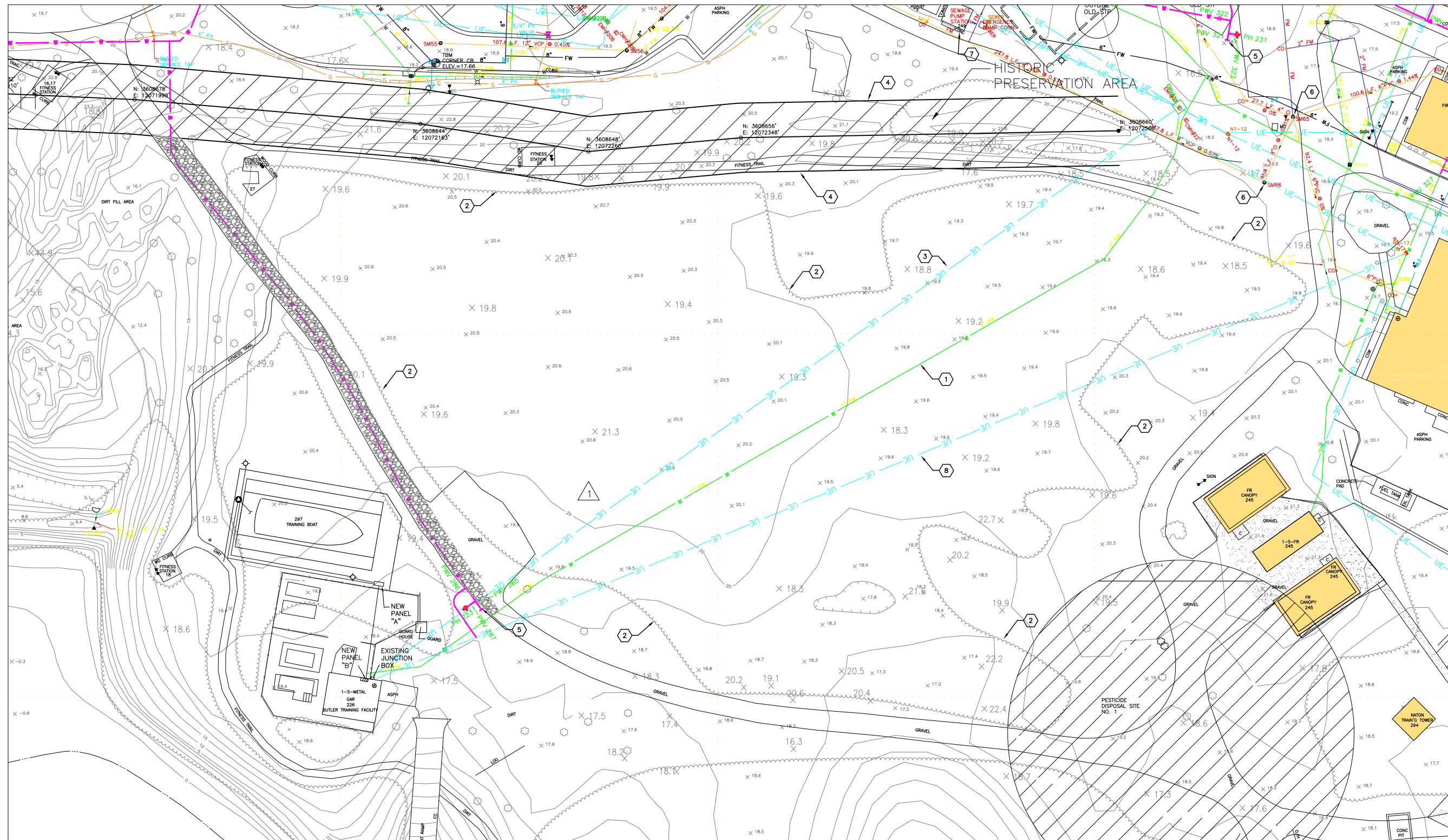
REVIEWED BY:	REVIEWED BY:	REVIEWED BY:
PROJECT ENG.	BRANCH CHIEF	TECH. DIRECTOR

APPROVING OFFICER _____ DATE _____

PROJECT NUMBER	DRAWING NUMBER
75-2724117	752724117C100

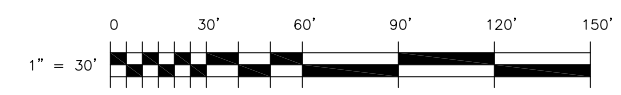
DISCIPLINE/SHT NO	SHEET	OF	8
C100	2		

G:\CHANGE\F:\VA\YORKTOWN\75-2724117 DPWTR ENG & WPNS TRAINING FACILITY\RP\CONTRACTING BRIDGING DOCS\AMENDMENTS\#3\CD_CONTENTS\752724117C101.DWG LAYOUT: C101 11/07/2011 4:52PM DIMSCALE: 2 RT17.2



EXISTING CONDITIONS PLAN NOTES:

1. REMOVE EXISTING WATER LINE. CONTRACTOR TO CONFIRM LOCATION AND DEPTH AND RECONNECT SERVICE TO WATERLINE CONSTRUCTED AS PART OF PROJECT SFRL 75-L9001.
2. EXISTING VEGETATION AND TREES. CONTRACTOR TO CLEAR AND GRUB AS NECESSARY FOR SCOPE OF WORK.
3. EXISTING UNDERGROUND ELECTRIC. CONTRACTOR TO CONFIRM LOCATION AND DEPTH. RELOCATE OUT FROM PROPOSED BLDG FOOTPRINT AND OUTSIDE OF FUTURE BLDG FOOTPRINT
4. EXISTING HISTORIC CIVIL WAR TRENCH TO BE PRESERVED. NO SURFACE DISTURBANCE ALLOWED. VA SHPO COORDINATION REQUIRED FOR ANY UTILITY CROSSINGS.
5. ON-BASE WATER DISTRIBUTION SYSTEM LINE CONSTRUCTED AS PART OF PROJECT SFRL 75-L9001
6. EXISTING GRAVITY SANITARY SEWER MANHOLE
7. EXISTING SANITARY SEWER PUMP STATION
8. EXISTING UNDERGROUND ELECTRIC. CONTRACTOR TO CONFIRM LOCATION AND DEPTH. RELOCATE IF NECESSARY.

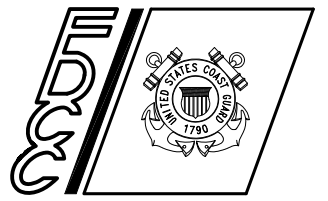


CONSULTANTS

D/B RFP DOCS

OCT 2011

**U. S. COAST GUARD
FACILITIES DESIGN &
CONSTRUCTION CENTER**



5505 ROBIN HOOD ROAD SUITE K
NORFOLK, VIRGINIA 23513-2431

ISSUE		
MARK	DATE	DESCRIPTION
▲	11/02/11	UE, DATE AND HEADER REVISED

A/E PROJECT NO:	
CAD FILE NAME:	752724117C101.dwg
DESIGNED BY:	
DRAWN BY:	
EDITED BY:	
CHECKED BY:	

SCALE: PLOT SCALE: 1 : 1

EXISTING CONDITIONS PLAN

CONST DEEPWATER TEW BUILDING
CG TRACEN YORKTOWN
Yorktown VA
TRACEN YORKTOWN
CIVIL

REVIEWED BY:	REVIEWED BY:	REVIEWED BY:
PROJECT ENG.	BRANCH CHIEF	TECH. DIRECTOR

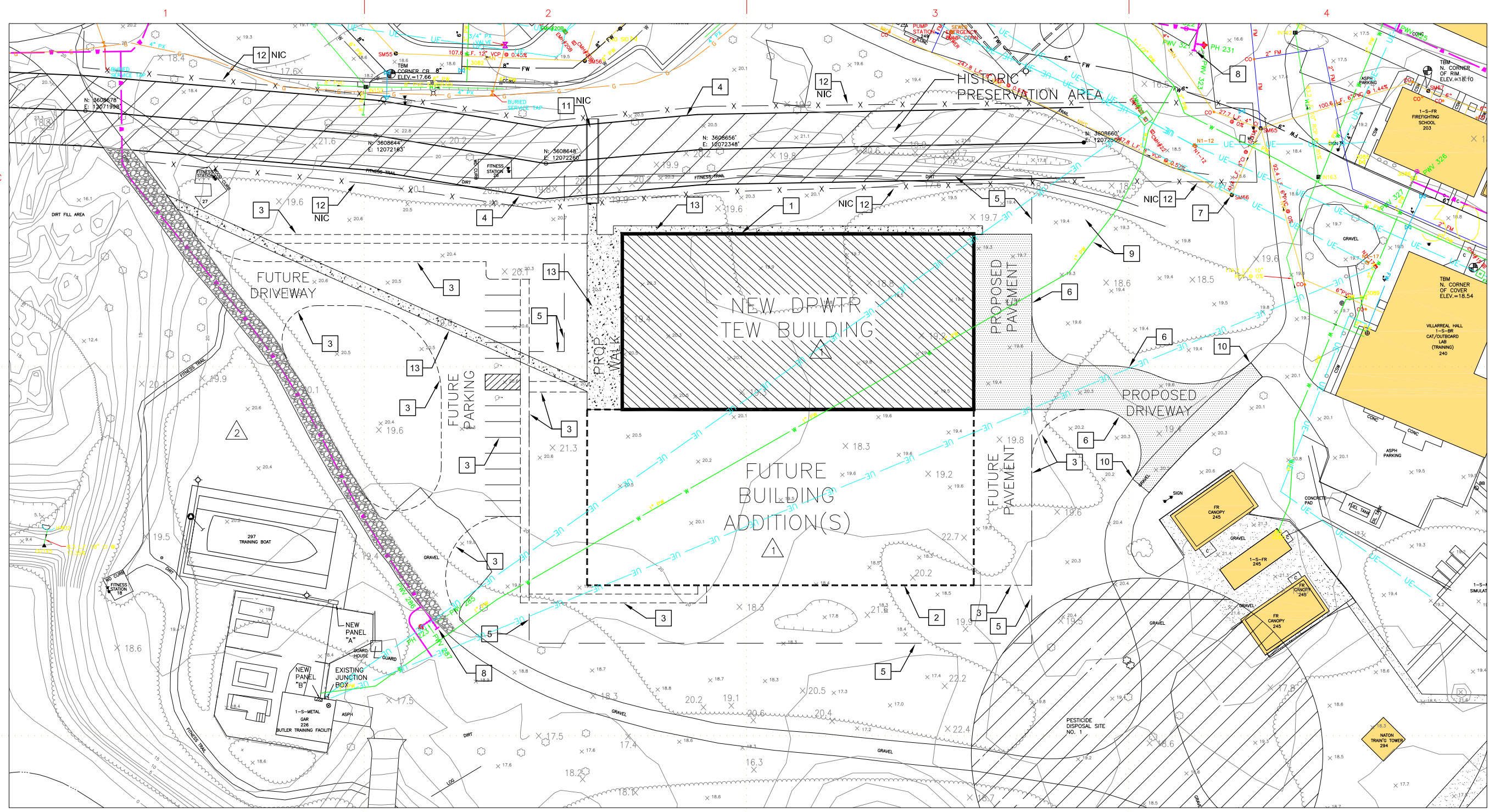
APPROVING OFFICER _____ DATE _____

PROJECT NUMBER	DRAWING NUMBER
75-2724117	752724117C101

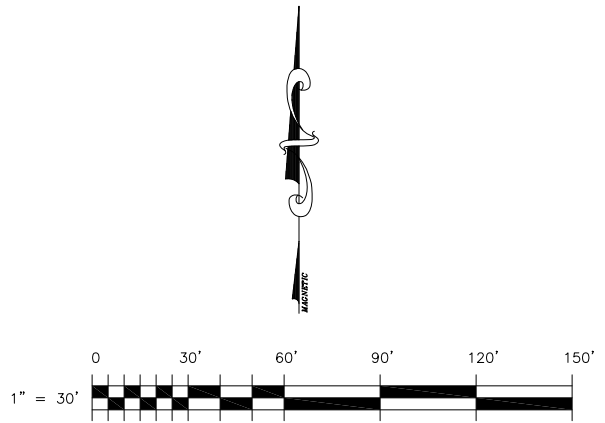
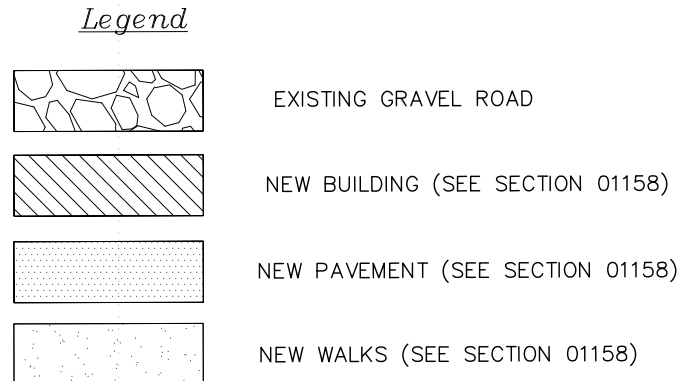
DISCIPLINE/SHT NO
C101

SHEET **3** OF **8**

J:\REGAN\VA\YORKTOWN\75-2724117 DPWTR ENG & WPNS TRAINING FACILITY\BIDDING DOCS\AMENDMENTS\3\CD_CONTENTS\752724117C102.DWG LAYOUT: C102 11/09/2011 1:16PM DIMSCALE: 2 R17.2



- XX SITE PLAN NOTES:
1. CONSTRUCT APPROX. #26,000 GSF TEW BUILDING. SEE SHEET A100 FOR DETAILS.
 2. PROJECTED BUILDING ADDITION(S) TO BE COMPLETED IN FUTURE PHASES.
 3. FUTURE PAVEMENT
 4. CIVIL WAR TRENCH/EMBANKMENT REGISTERED ON STATE HISTORIC SITES
 5. 10M ATFP LIMIT SETBACK
 6. CONSTRUCT PAVEMENT
 7. CONNECT TO EXISTING SANITARY SEWER MANHOLE AND CONSTRUCT SEWER SERVICE FOR BUILDING (SEE RFP SECTION 01158 FOR DETAILS)
 8. CONNECT TO EXISTING WATER LINE AND CONSTRUCT LOOPED WATER SYSTEM AND PROVIDE ALL APPURTENANCES (VALVES, FHS, TEES, BENDS, ETC. - SEE RFP SECTION 01158 FOR DETAILS)
 9. REMOVE AND RELOCATE EXISTING UTILITY OUTSIDE CURRENT AND FUTURE BUILDING FOOTPRINT
 10. EXISTING GRAVEL ROAD TO BE PAVED THROUGH DRIVEWAY LOCATION PROPOSED FOR TEW WHERE INDICATED
 11. PROPOSED PEDESTRIAN BRIDGE (NIC) 1
 12. PROPOSED WOODEN STACKED SNAKE RAIL FENCE (NIC) 1
 13. CONSTRUCT SIDEWALK

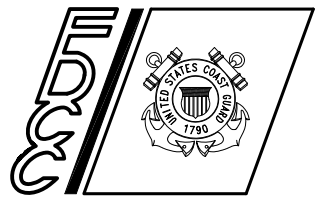


CONSULTANTS

D/B RFP DOCS

OCT 2011

**U. S. COAST GUARD
FACILITIES DESIGN &
CONSTRUCTION CENTER**



5505 ROBIN HOOD ROAD SUITE K
NORFOLK, VIRGINIA 23513-2431

MARK	DATE	DESCRIPTION
△	11/02/11	HEADER AND XREF CORRECTED
△	10/28/11	REMOVED BLDG SF, FENCE, AND BRIDGE

A/E PROJECT NO:
CAD FILE NAME: 752724117C102.dwg
DESIGNED BY:
DRAWN BY:
EDITED BY:
CHECKED BY:

SCALE: PLOT SCALE: 1 : 1

SHEET TITLE

**Construct DEEPWATER TEW Bldg
CG TRACEN YORKTOWN
Yorktown VA
TRACEN YORKTOWN
CIVIL
Deepwater TEW Bldg**

REVIEWED BY:	REVIEWED BY:	REVIEWED BY:
PROJECT ENG.	BRANCH CHIEF	TECH. DIRECTOR

APPROVING OFFICER _____ DATE _____

PROJECT NUMBER	DRAWING NUMBER
75-2724117	752724117C102

DISCIPLINE/SHT NO	SHEET	OF
C102	4	8

CONSTRUCT DEEPWATER TEW BUILDING

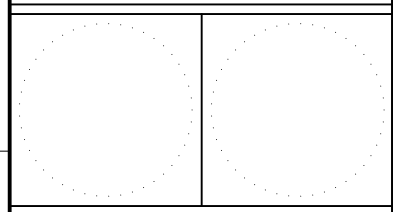
SFRL #75-27241 17 USCG TRACEN YORKTOWN YORKTOWN, VIRGINIA

DRAWING INDEX

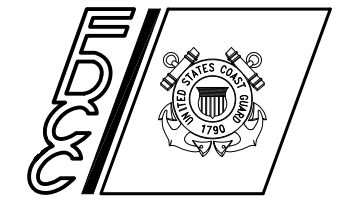
DRAWING NO.	SHEET NO.	DISCIPLINE	DRAWING TITLE
752724117G100	G100	GENERAL	TITLE SHEET
752724117C101	C100	CIVIL	OVERALL LAYOUT
752724117C102	C101	CIVIL	EXISTING CONDITIONS PLAN
752724117C103	C102	CIVIL	SITE PLAN
752724117A001	A001	ARCHITECTURAL	ADJACENCY CONCEPT - GROUND LEVEL
752724117A002	A002	ARCHITECTURAL	ADJACENCY CONCEPT - UPPER LEVEL
752724117A003	A003	ARCHITECTURAL	ENGINE LAB - EQUIPMENT LAYOUT
752724117A004	A004	ARCHITECTURAL	FUTURE BUILDING EXPANSION

CONSULTANTS

OCT RFP
2011



**U. S. COAST GUARD
FACILITIES DESIGN &
CONSTRUCTION CENTER**



5505 ROBIN HOOD ROAD SUITE K
NORFOLK, VIRGINIA 23513-2431

ISSUE		
MARK	DATE	DESCRIPTION
▲	11/02/11	DATE AND HEADER REVISED

A/E PROJECT NO:
CAD FILE NAME: [A752724117G001.dwg](#)
DESIGNED BY:
DRAWN BY:
EDITED BY:
CHECKED BY:

SCALE: PLOT SCALE: 1 : 1

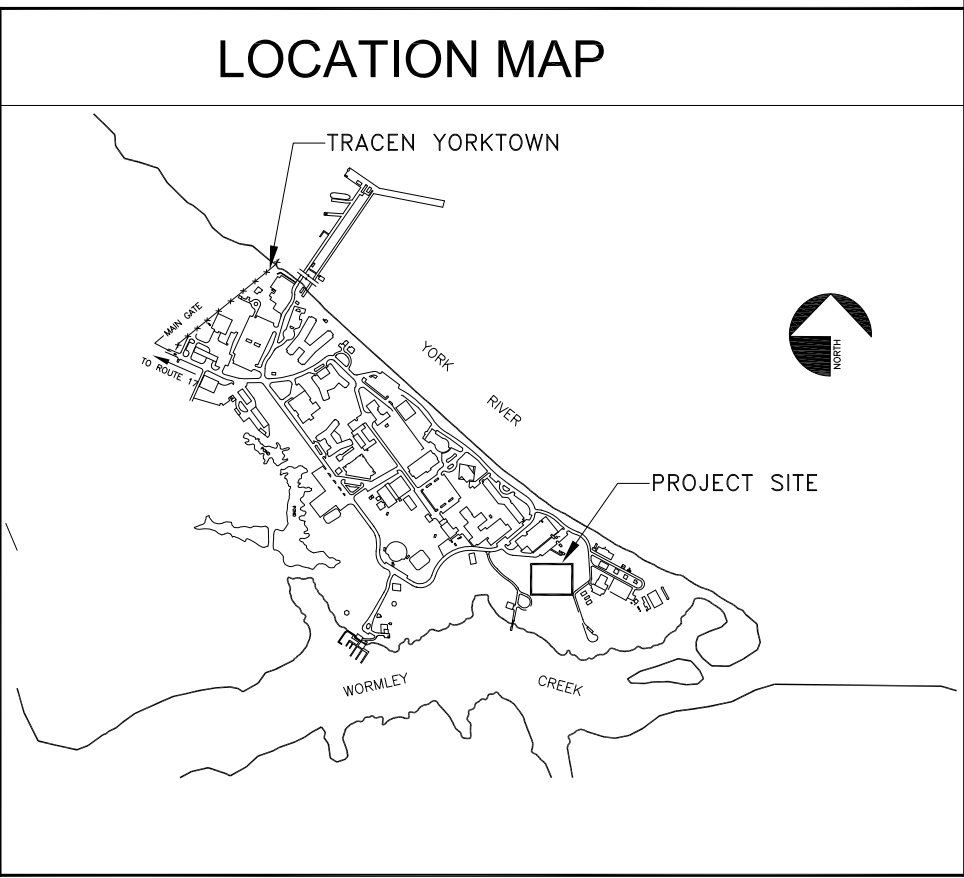
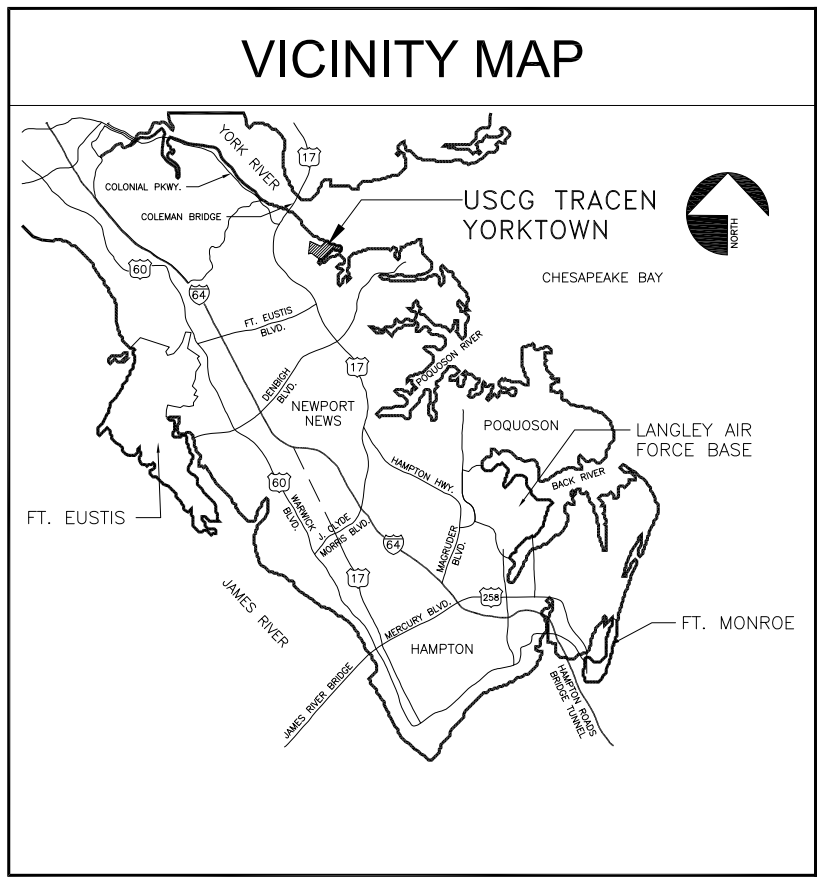
SHEET TITLE
CONST DEEPWATER TEW BUILDING
CG TRACEN YORKTOWN
Yorktown VA
TRACEN YORKTOWN
GENERAL
TITLE SHEET

REVIEWED BY:	REVIEWED BY:	REVIEWED BY:
PROJECT ENG.	BRANCH CHIEF	TECH. DIRECTOR

APPROVING OFFICER _____ DATE _____

PROJECT NUMBER	DRAWING NUMBER
752724117	752724117G100

DISCIPLINE/SHT NO
G100 SHEET **1** OF **8**



ABBREVIATIONS

3-S-BR	3 STORY BRICK	GV	GAS VALVE
A,ASPH	ASPHALT	HDWL	HEAD WALL
A/C	AIR CONDITIONER	MB	MAIL BOX
BLK	BLOCK	MC	METAL COVER
BR	BRICK	MGR	METAL GUARD RAIL
CATV	CABLE TELEVISION BOX	MH	MANHOLE
CB	CATCH BASIN	O/H	OVERHEAD
C,CONC	CONCRETE	RCP	REINFORCED CONC PIPE
CC	CONCRETE CURB	R,RES	RESIDENCE
CHDWL	CONCRETE HEADWALL	SC	SEWER COVER
CC&G	CONC CURB & GUTTER	SMH	SEWER MANHOLE
CG	CONCRETE GUTTER	S	STORY
CLF	CHAIN LINK FENCE	STN C	STONE CURB
CMP	CORR METAL PIPE	STOMH	STORM MANHOLE
CP	CONCRETE PIPE	STOR	STORAGE
CSW	CONCRETE SIDEWALK	TCB	TRAFFIC CONTROL BOX
DI	DROP INLET	TCM	TELEPHONE CABLE MARKER
EB	ELECTRIC BOX	TMH	TELEPHONE MANHOLE
EC	ELECTRIC COVER	TEL PED	TELEPHONE PEDESTAL
EM	ELECTRIC METER	TRAN	TRANSFORMER
EMH	ELECTRIC MANHOLE	U/C	UNDER CONSTRUCTION
FR	FRAME	U/G	UNDER GROUND
GAR	GARAGE	W	WALL
GM	GAS METER	WD	WOOD
GMH	GAS MANHOLE	WM	WATER METER
GRV	GRAVEL	WMH	WATER MANHOLE
GUY	GUY POLE	WV	WATER VALVE

G:\CHANGESET\VA\YORKTOWN\75-2724117_DPWR_ENG & WPNS_TRAINING_FACILITY\CONTRACTING_BRIDGING_DOCS\AMENDMENTS\3\CD_CONTENTS\752724117G100.DWG LAYOUT: G100 11/07/2011 4:34PM DIMSCALE: 0.5 R17.2