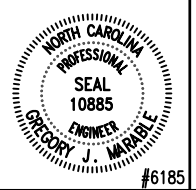


CONSULTANTS
PACE COLLABORATIVE



**U. S. COAST GUARD
 SUPPORT CENTER**



**USCG SUPPORT CENTER
 FACILITIES ENGINEERING DIVISION
 ELIZABETH CITY, NC 27921**

ISSUE		
MARK	DATE	DESCRIPTION

A/E PROJECT NO: 24691A
 CAD FILE NAME: C7482E101
 DESIGNED BY: G.J. MARABLE
 DRAWN BY: J.W. STUTZMAN, JR
 EDITED BY: J.W. STUTZMAN, JR
 CHECKED BY: K.J. NEUBERT

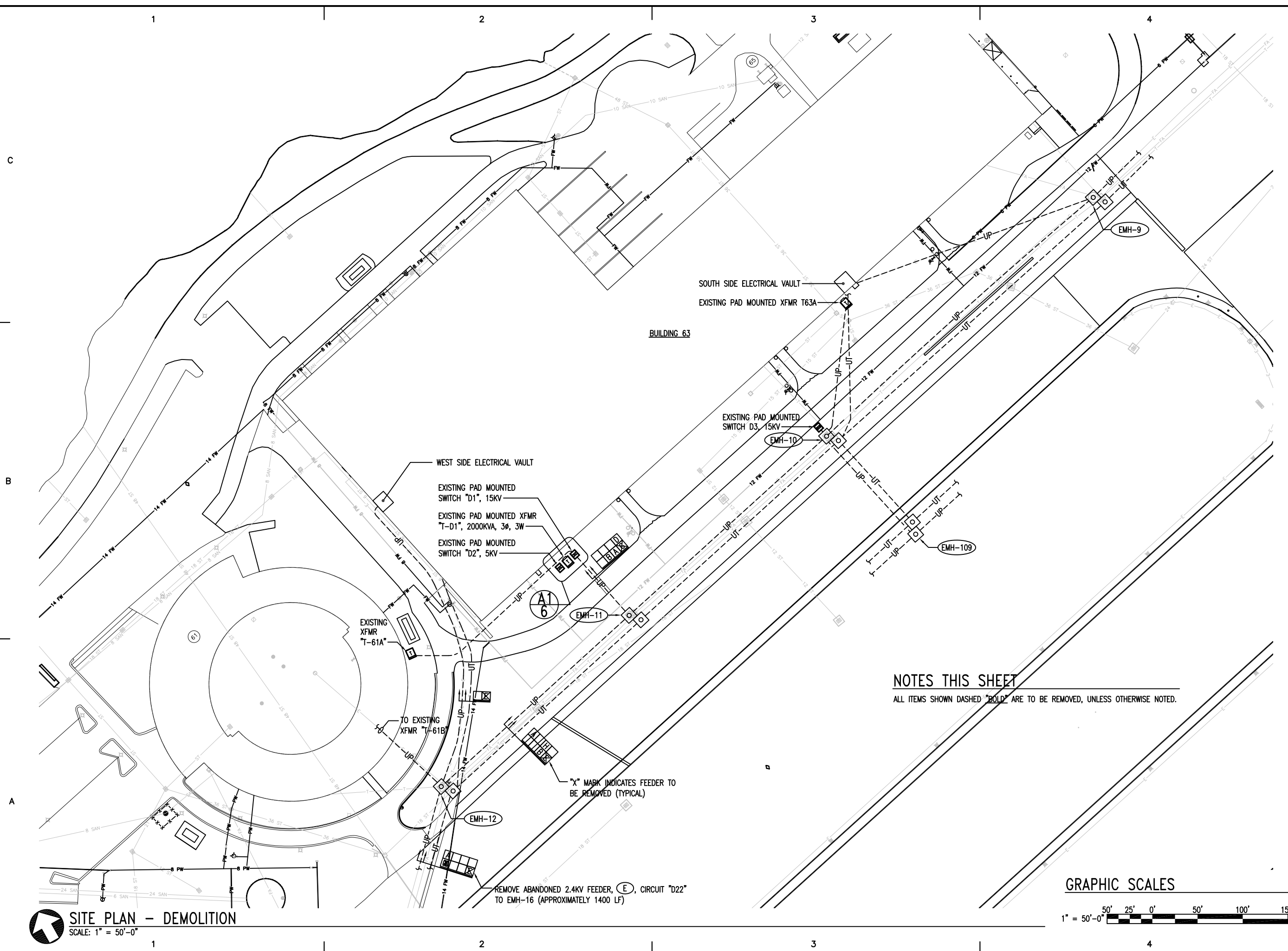
SCALE: AS SHOWN PLOT SCALE: 1:1

SHEET TITLE
**REMB ELECTRICAL SYSTEM BLDG. 63,
 WEST SIDE ELECTRICAL VAULT
 SUPPORT CENTER ELIZABETH CITY
 ELIZABETH CITY NORTH CAROLINA
 ELECTRICAL
 SITE PLAN - DEMOLITION**

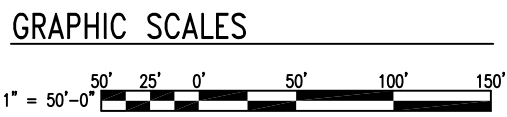
REVIEWED BY: D. AYDLETT PROJECT ENG.	REVIEWED BY: LT J. HALL BRANCH CHIEF
---	---

D. LANHANCE, CDR APPROVING OFFICER	AUG. 31, 2007 DATE
--	------------------------------

PROJECT NUMBER 536369	DRAWING NUMBER 7482-D
DISCIPLINE/SHT NO E101	SHEET 3 OF 23



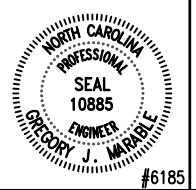
NOTES THIS SHEET
 ALL ITEMS SHOWN DASHED "BOLD" ARE TO BE REMOVED, UNLESS OTHERWISE NOTED.



SITE PLAN - DEMOLITION
 SCALE: 1" = 50'-0"

REMOVE ABANDONED 2.4KV FEEDER, (E), CIRCUIT "D22" TO EMH-16 (APPROXIMATELY 1400 LF)

"X" MARK INDICATES FEEDER TO BE REMOVED (TYPICAL)



**U. S. COAST GUARD
 SUPPORT CENTER**



USCG SUPPORT CENTER
 FACILITIES ENGINEERING DIVISION
 ELIZABETH CITY, NC 27921

ISSUE		
MARK	DATE	DESCRIPTION

A/E PROJECT NO: 24691A
 CAD FILE NAME: C7482E201
 DESIGNED BY: G.J. MARABLE
 DRAWN BY: J.W. STUTZMAN, JR
 EDITED BY: J.W. STUTZMAN, JR
 CHECKED BY: K.J. NEUBERT

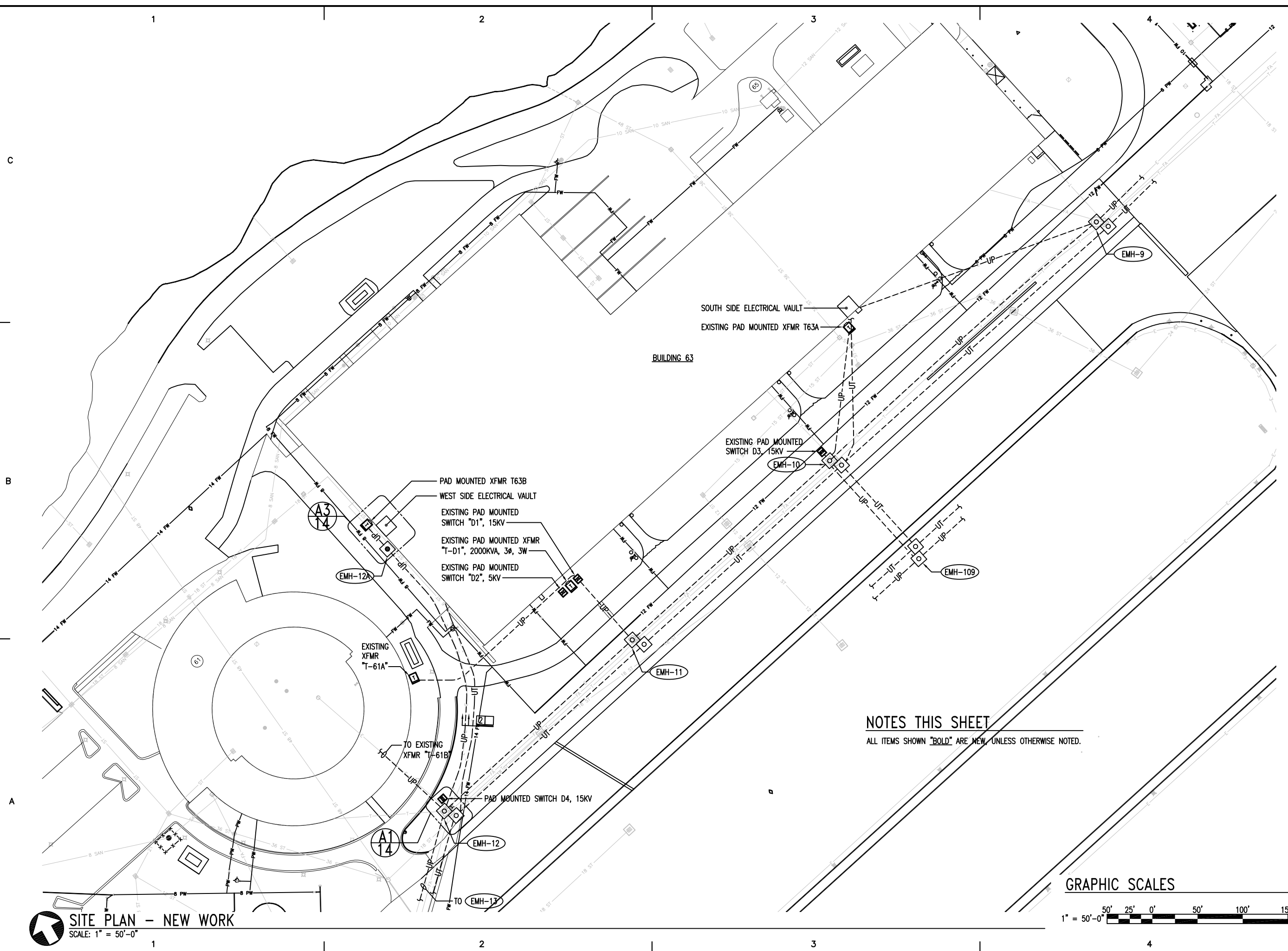
SCALE: AS SHOWN PLOT SCALE: 1:1

SHEET TITLE
**REMB ELECTRICAL SYSTEM BLDG. 63,
 WEST SIDE ELECTRICAL VAULT
 SUPPORT CENTER ELIZABETH CITY
 ELIZABETH CITY NORTH CAROLINA
 ELECTRICAL
 SITE PLAN - NEW WORK**

REVIEWED BY: D. AYDLETT PROJECT ENG.	REVIEWED BY: LT J. HALL BRANCH CHIEF
---	---

D. LANHANCE, CDR APPROVING OFFICER	AUG. 31, 2007 DATE
--	------------------------------

PROJECT NUMBER 536369	DRAWING NUMBER 7482-D
DISCIPLINE/SHT NO E201	SHEET 11 OF 23



SOUTH SIDE ELECTRICAL VAULT
 EXISTING PAD MOUNTED XFMR T63A

BUILDING 63

EXISTING PAD MOUNTED SWITCH D3, 15KV

PAD MOUNTED XFMR T63B
 WEST SIDE ELECTRICAL VAULT
 EXISTING PAD MOUNTED SWITCH "D1", 15KV
 EXISTING PAD MOUNTED XFMR "T-D1", 2000KVA, 3Ø, 3W
 EXISTING PAD MOUNTED SWITCH "D2", 5KV

EXISTING XFMR "T-61A"

TO EXISTING XFMR "T-61B"

PAD MOUNTED SWITCH D4, 15KV

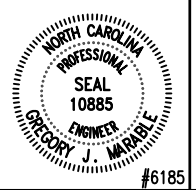
NOTES THIS SHEET

ALL ITEMS SHOWN "BOLD" ARE NEW UNLESS OTHERWISE NOTED.

GRAPHIC SCALES



SITE PLAN - NEW WORK
 SCALE: 1" = 50'-0"



ISSUE		
MARK	DATE	DESCRIPTION

A/E PROJECT NO: 24691A
 CAD FILE NAME: C7482E211
 DESIGNED BY: G.J. MARABLE
 DRAWN BY: J.W. STUTZMAN, JR
 EDITED BY: J.W. STUTZMAN, JR
 CHECKED BY: K.J. NEUBERT

SCALE: AS SHOWN PLOT SCALE: 1:1

SHEET TITLE

**REWB ELECTRICAL SYSTEM BLDG. 63,
 WEST SIDE ELECTRICAL VAULT
 SUPPORT CENTER ELIZABETH CITY
 ELIZABETH CITY NORTH CAROLINA
 ELECTRICAL
 COMPOSITE ONE LINE DIAGRAM - NEW WORK**

REVIEWED BY: D. AYDLETT PROJECT ENG.
 REVIEWED BY: LT J. HALL BRANCH CHIEF

D. LANHANCE, CDR APPROVING OFFICER
 AUG. 31, 2007 DATE

PROJECT NUMBER DRAWING NUMBER

536369 7482-D

DISCIPLINE/SHT NO SHEET 15 OF 23

C

B

A

C

B

A

ITEMS SHOWN BOLD ON THIS SHEET ARE NEW U.O.N.

ITEMS SHOWN WITH LIGHT LINEWEIGHTS ARE EXISTING TO REMAIN

NOTES THIS SHEET

ALL ITEMS SHOWN "BOLD" ARE NEW, UNLESS OTHERWISE NOTED.

