

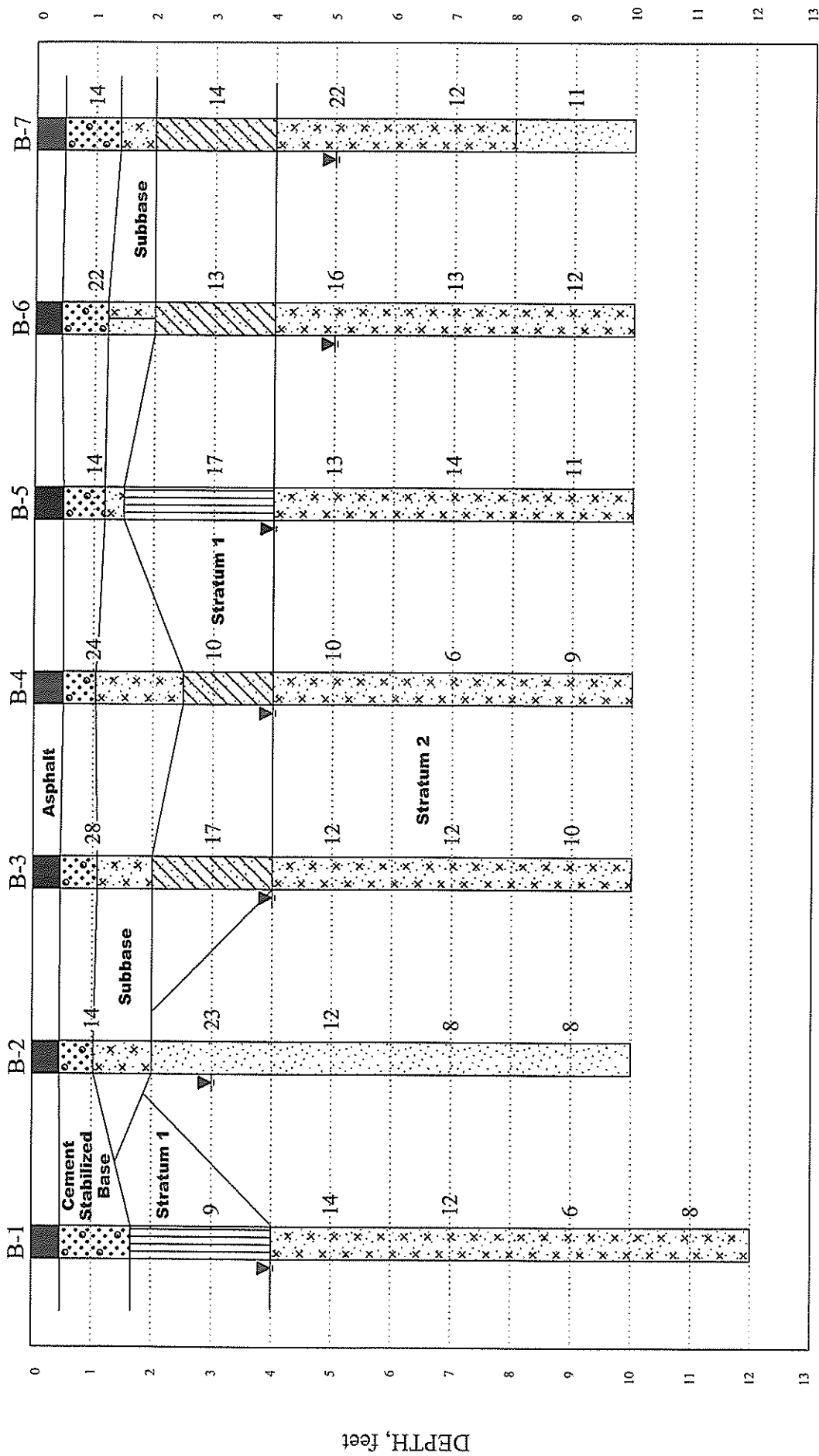
© 1999 DeLorme, Street Atlas USA

Mag 11.00
 Tue Feb 11 09:30 2003
 Scale 1:250,000 (at center)
 5 Miles
 5 KM

- Major Connector
- State Route
- US Highway
- County Seat
- ◆ Small Town
- ◆ Locale
- ◇ City
- Population Center
- Land
- Water

McCALLUM TESTING LABORATORIES, INC.
 1808 Hayward Avenue
 Chesapeake, Virginia 23325-0337

Scale:	As shown	Approved By:	Douglas S. Kinloch, P.E.	Date:	1/28/03
Project:	Proposed Parking Apron for C130J's U.S. Coast Guard Air Station Elizabeth City, North Carolina				
Drawing Title:	Site Location Plan			Drawing Number:	1



LEGEND

- B-1 Boring No.
- Stabilized Groundwater Level
- Groundwater Level
- SPT 8
- SPT 10
- SPT 10
- SPT 3
- Soil Type
- NOH
- Weight of Hammer

Subsurface Profile

Drawing 3

PROJECT Proposed Parking Area for C130 J's

PROJECT NO. 03-3689

McCALLUM TESTING LABORATORIES, INC.

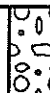











McCALLUM

TESTING LABORATORIES, INC.

CHESAPEAKE, VIRGINIA

Unified Soil Classification System ASTM Designation D 2487

Standard Penetration Test (SPT) Resistance Correlations

Co. Grained Soils (More than 50% of material retained on the No. 200 Sieve)			
Gravels (more than 50% retained the No. 4 Sieve)	Sands (more than 50% passing the No. 4 Sieve)		
	GW	Well graded gravels, gravel-sand mixtures, little or no fines	
	GP	Poorly graded gravels, gravel-sand mixtures, little or no fines	
	GM	Silty gravels, gravel-sand-silt mixtures	
	GC	Clayey gravels, gravel-sand-clay mixtures	
	SW	Well graded sands, gravelly sands, little or no fines	
	SP	Poorly graded sands, gravelly sands, little or no fines	
	SM	Silty sands, sand-silt mixtures	
	SC	Clayey sands, sand-clay mixtures	
Fine Grained Soils (More than 50% of material passes on the No. 200 Sieve)			
Silt & Clays (LL less than 50)	ML	Inorganic silts, very fine sands, silty or clayey fine sands or clayey silts with slight plasticity	
	CL	Inorganic clays of low to medium plasticity, gravelly clays, sandy clays	
Silt & Clays (LL greater than 50)	OL	Organic silts and organic silty clays of low plasticity	
	MH	Inorganic silts, micaceous or diatomaceous fine sandy or silty soils, plastic silts	
	CH	Inorganic clays of high plasticity, fat clays	
	OH	Organic clays of medium to high plasticity	
Highly Organic Soil	PEAT	Peat and other highly organic soils	

Coarse Grained Soils

SPT
vs.
Relative Density

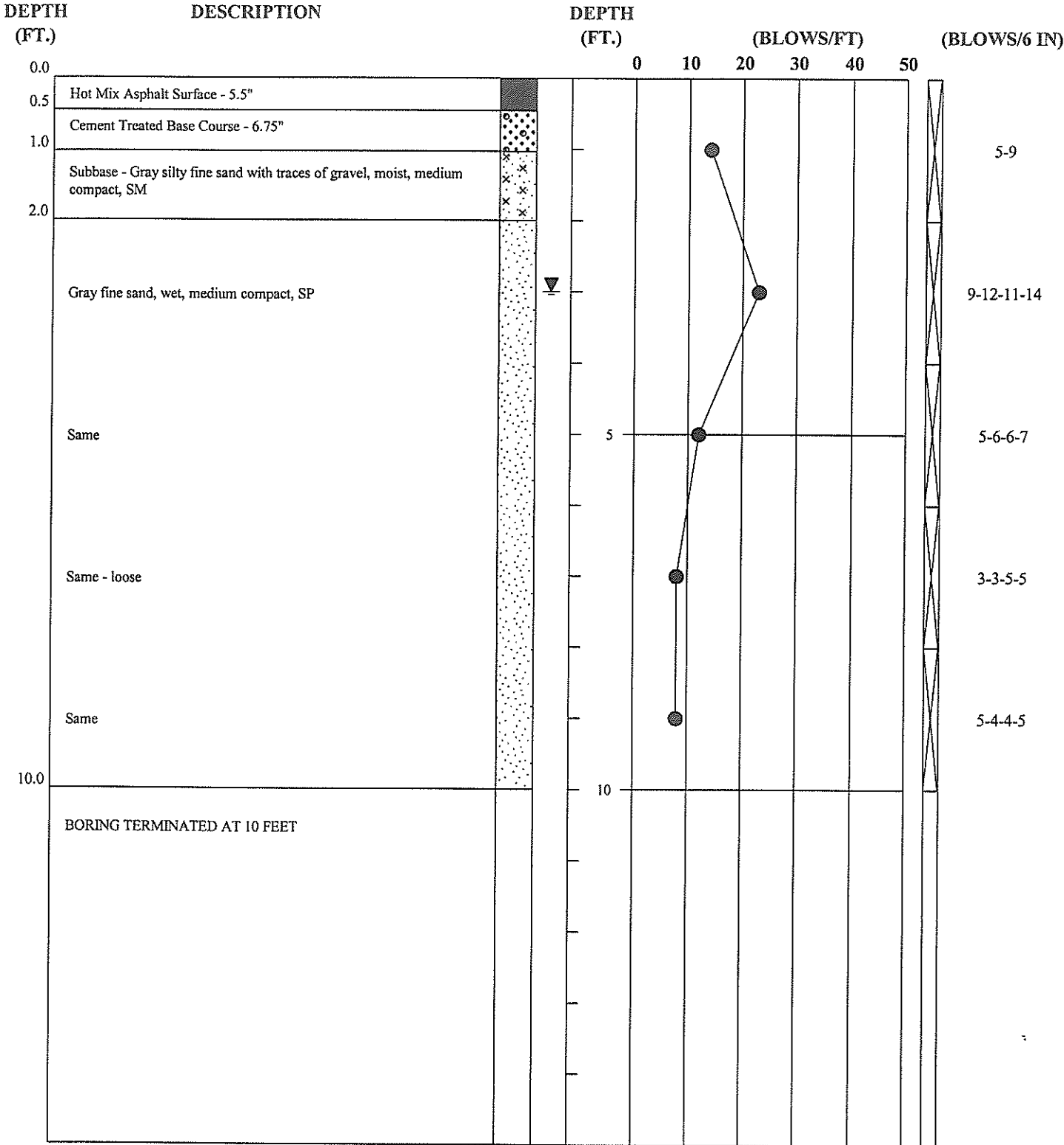
Blows/Ft	Relative Density
0 - 4	Very Loose
5 - 10	Loose
11 - 30	Medium Compact
31 - 50	Compact
Over 50	Very Compact

Fine Grained Soils

SPT
vs.
Consistency

Blows/Ft	Consistency
0 - 2	Very Soft
3 - 4	Soft
5 - 8	Medium Stiff
9 - 15	Stiff
16 - 30	Very Stiff
31 - 50	Hard
Over 50	Very Hard

STANDARD PENETRATION RESISTANCE

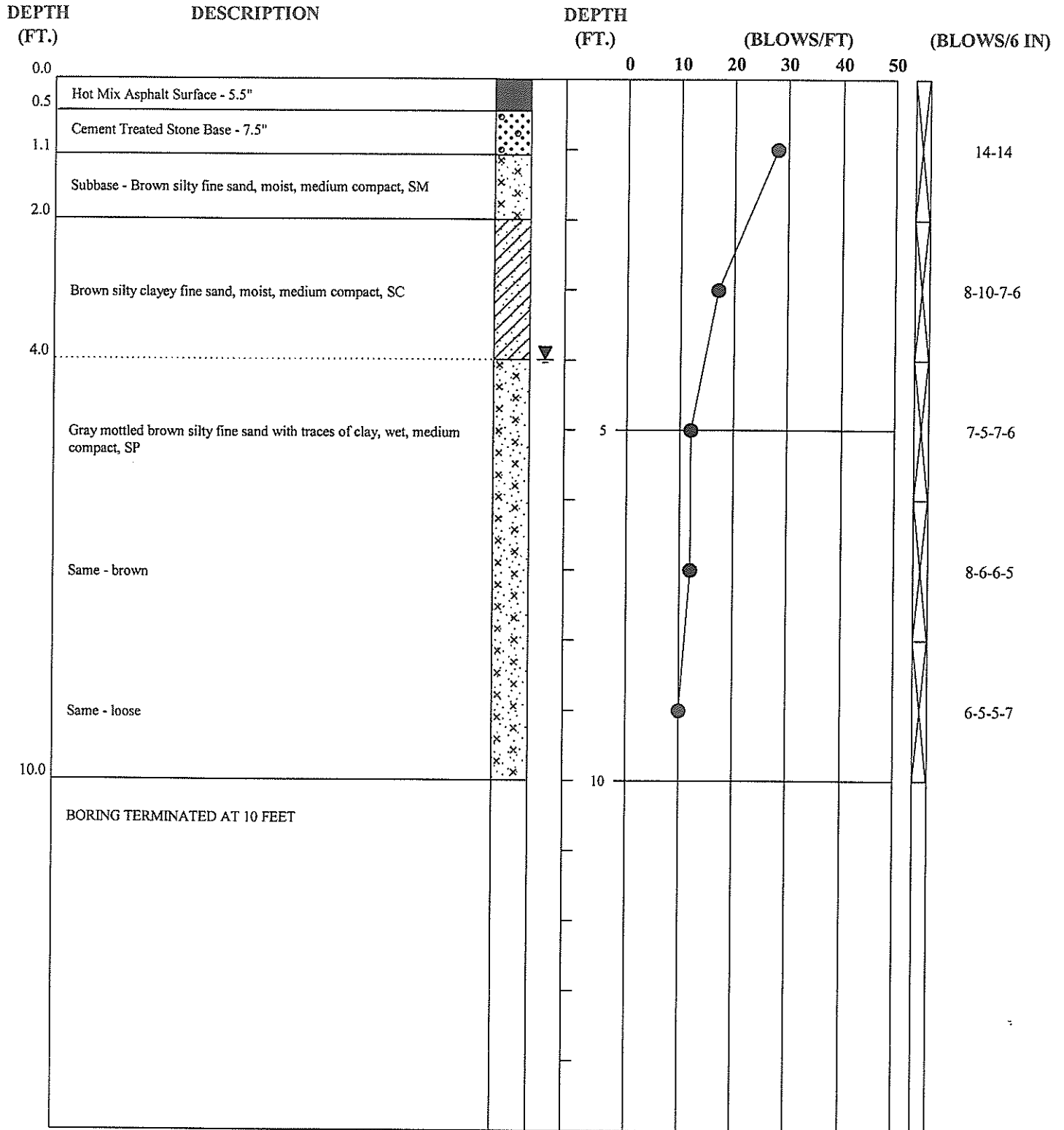


NOTES:

- - Gradual Stratum Change
- - Approximate Stratum Change
- - Penetration Resistance (N - value)
- ⊗ - Standard Penetration Test
- ▬ - Undisturbed Sample
- ▽ - Groundwater Level at Time of Boring
- ▽ - Stabilized Groundwater Level Reading

TEST BORING RECORD	
BORING NUMBER	B-2
DATE DRILLED	January 21, 2003
PROJECT NUMBER	03-3689
PROJECT	Proposed Parking Area for C130 J's
LOCATION	Coast Guard Station, Elizabeth City, NC
McCALLUM TESTING LABORATORIES, INC.	

STANDARD PENETRATION RESISTANCE

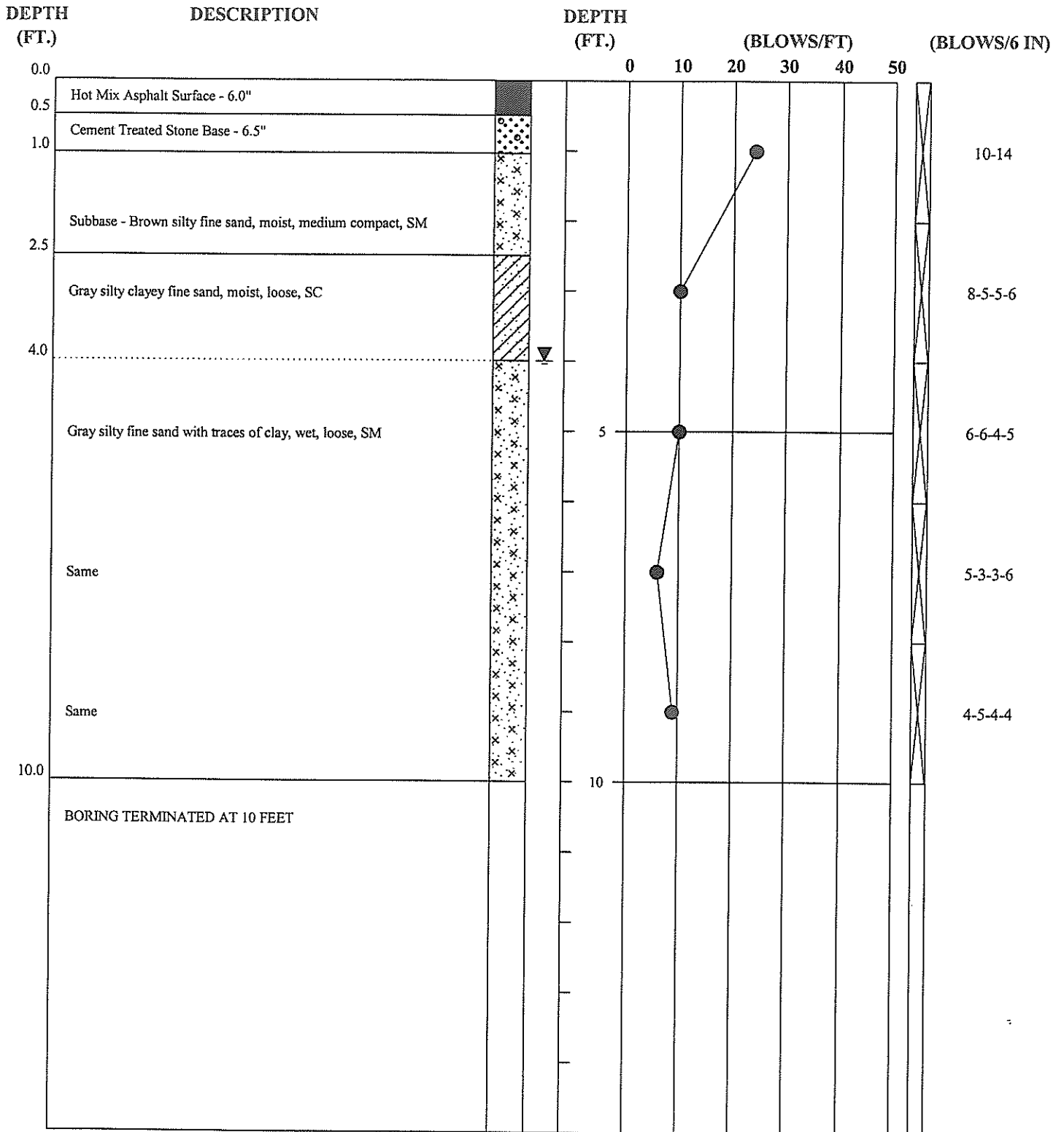


NOTES:

- - Gradual Stratum Change
- - Approximate Stratum Change
- - Penetration Resistance (N - value)
- ⊗ - Standard Penetration Test
- ▬ - Undisturbed Sample
- ▽ - Groundwater Level at Time of Boring
- ▽ - Stabilized Groundwater Level Reading

TEST BORING RECORD	
BORING NUMBER	B-3
DATE DRILLED	January 21, 2003
PROJECT NUMBER	03-3689
PROJECT	Proposed Parking Area for C130 J's
LOCATION	Coast Guard Station, Elizabeth City, NC
McCALLUM TESTING LABORATORIES, INC.	

STANDARD PENETRATION RESISTANCE

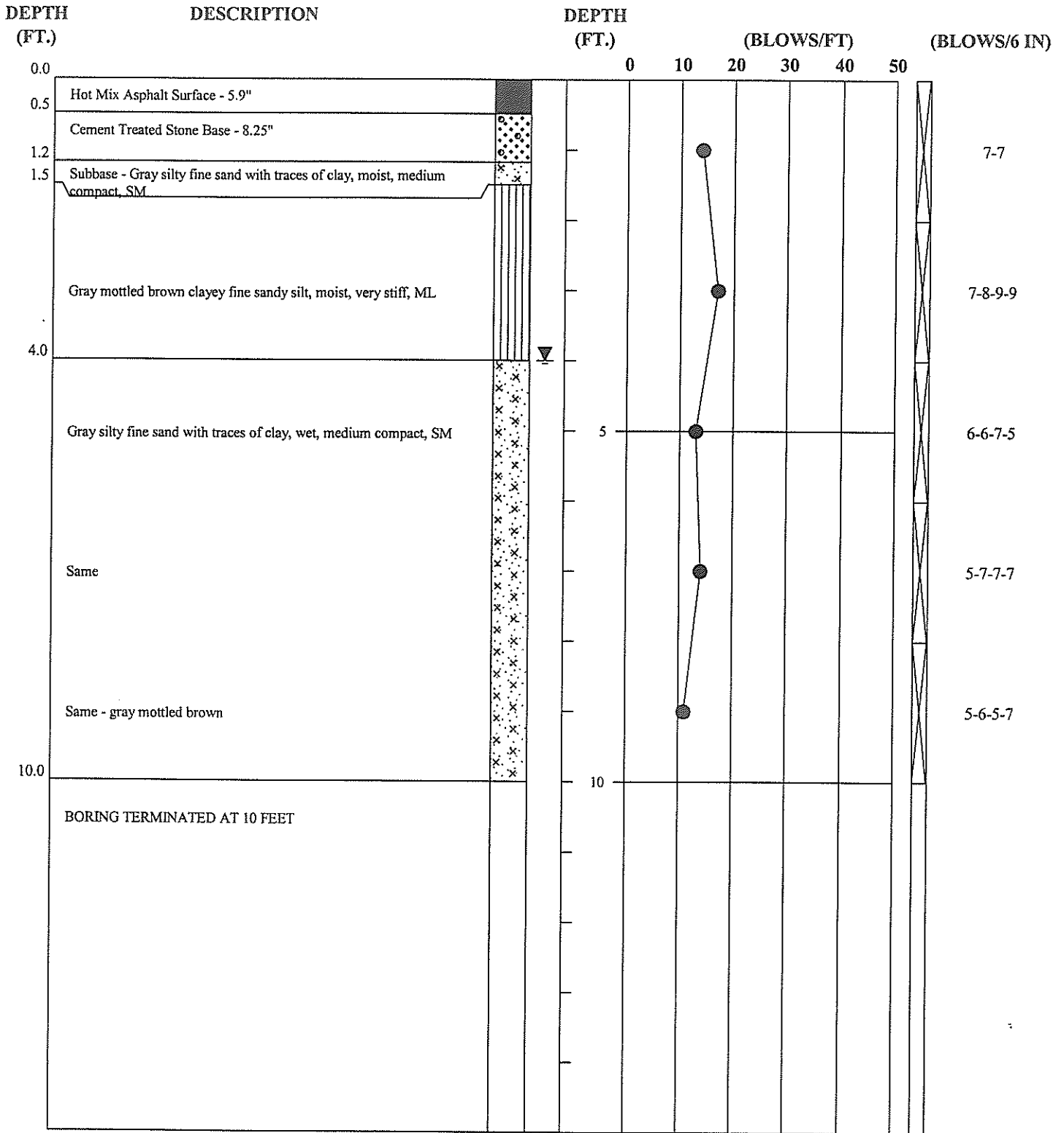


NOTES:

- - Gradual Stratum Change
- - Approximate Stratum Change
- - Penetration Resistance (N - value)
- ⊗ - Standard Penetration Test
- ▬ - Undisturbed Sample
- ▽ - Groundwater Level at Time of Boring
- ▽ - Stabilized Groundwater Level Reading

TEST BORING RECORD	
BORING NUMBER	B-4
DATE DRILLED	January 21, 2003
PROJECT NUMBER	03-3689
PROJECT LOCATION	Proposed Parking Area for C130 J's Coast Guard Station, Elizabeth City, NC
McCALLUM TESTING LABORATORIES, INC.	

STANDARD PENETRATION RESISTANCE

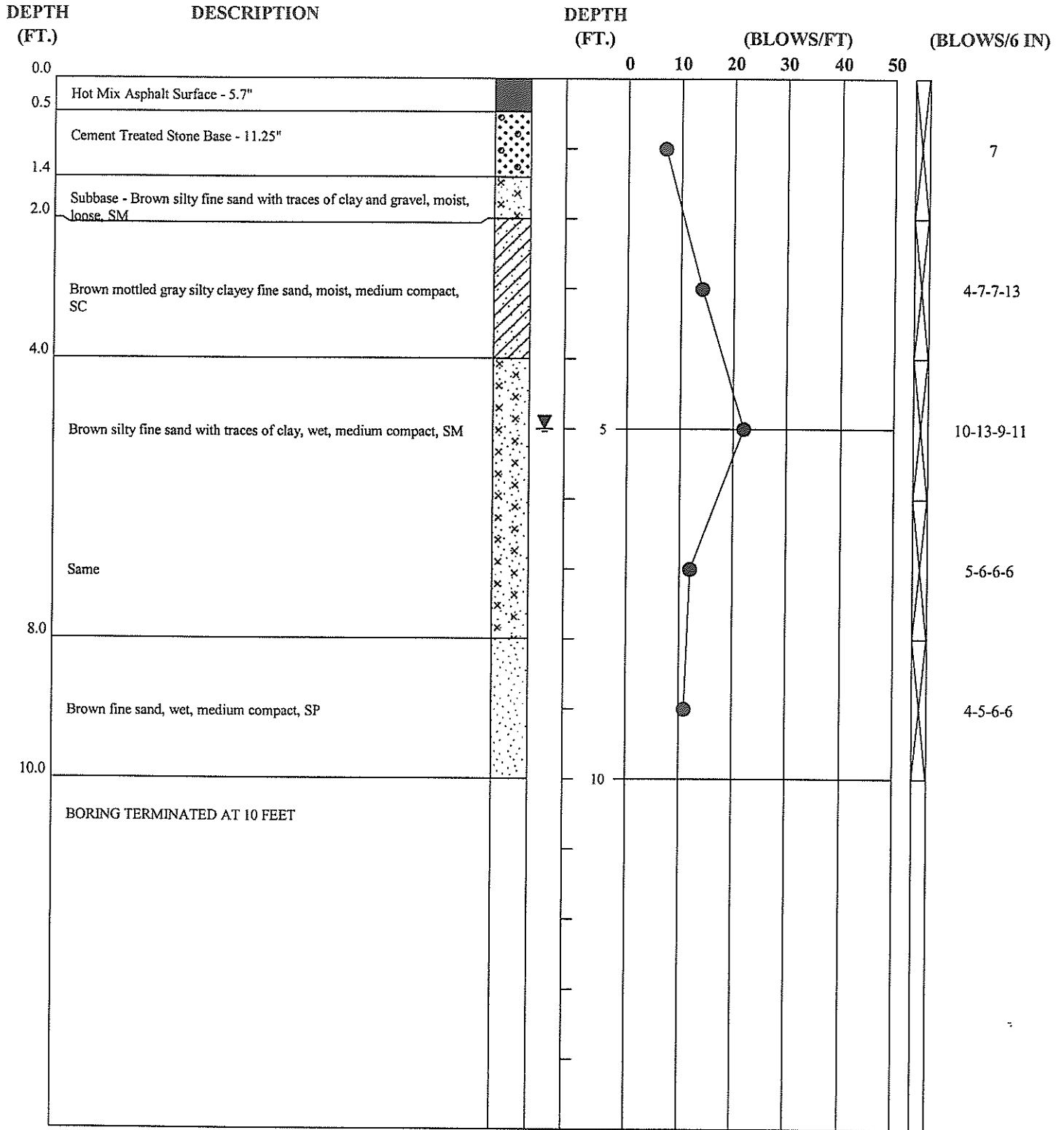


NOTES:

- - Gradual Stratum Change
- - Approximate Stratum Change
- - Penetration Resistance (N - value)
- ⊗ - Standard Penetration Test
- ▮ - Undisturbed Sample
- ▽ - Groundwater Level at Time of Boring
- ▽ - Stabilized Groundwater Level Reading

TEST BORING RECORD	
BORING NUMBER	B-5
DATE DRILLED	January 21, 2003
PROJECT NUMBER	03-3689
PROJECT	Proposed Parking Area for C130 J's
LOCATION	Coast Guard Station, Elizabeth City, NC
McCALLUM TESTING LABORATORIES, INC.	

STANDARD PENETRATION RESISTANCE



NOTES:

- - Gradual Stratum Change
- - Approximate Stratum Change
- - Penetration Resistance (N - value)
- ⊗ - Standard Penetration Test
- ▬ - Undisturbed Sample
- ▽ - Groundwater Level at Time of Boring
- ▽ - Stabilized Groundwater Level Reading

TEST BORING RECORD	
BORING NUMBER	B-7
DATE DRILLED	January 21, 2003
PROJECT NUMBER	03-3689
PROJECT	Proposed Parking Area for C130 J's
LOCATION	Coast Guard Station, Elizabeth City, NC
McCALLUM TESTING LABORATORIES, INC.	