



CONSTRUCT NEW ESD/CIVPERS BUILDING



BUILDING #62

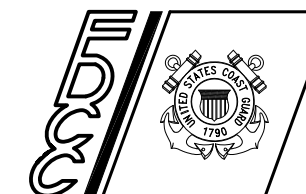
**U.S. COAST GUARD BASE
ELIZABETH CITY, NC**

PROJ. NO. 32-3648867

CONSULTANTS

D/B RFP DOCS
OCT 2011

U. S. COAST GUARD
FACILITIES DESIGN &
CONSTRUCTION CENTER



5505 ROBIN HOOD ROAD SUITE K
NORFOLK, VIRGINIA 23513-2431

ISSUE

MARK	DATE	DESCRIPTION

A/E PROJECT NO:

CAD FILE NAME: A32X4004T101.dwg

DESIGNED BY:

DRAWN BY:

EDITED BY:

CHECKED BY:

SCALE: PLOT SCALE: 1 : 1

SHEET TITLE

CONSTRUCT NEW ESD/CIVPERS BUILDING
USCG BASE
ELIZABETH CITY, NC
BUILDING #62
GENERAL
TITLE SHEET

REVIEWED BY: REVIEWED BY: REVIEWED BY:

PROJECT ENG. BRANCH CHIEF TECH. DIRECTOR

APPROVING OFFICER DATE

PROJECT NUMBER DRAWING NUMBER

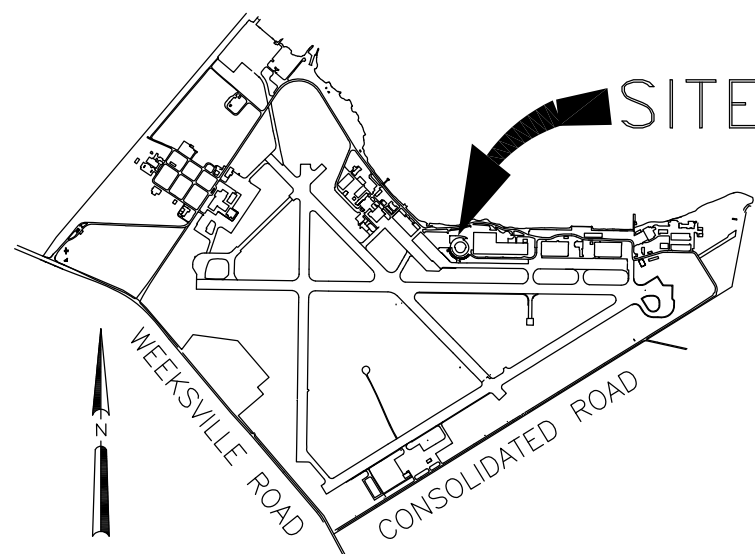
32-3648867 A323648867T101

DISCIPLINE/SHT NO

T101 SHEET 1 OF 11

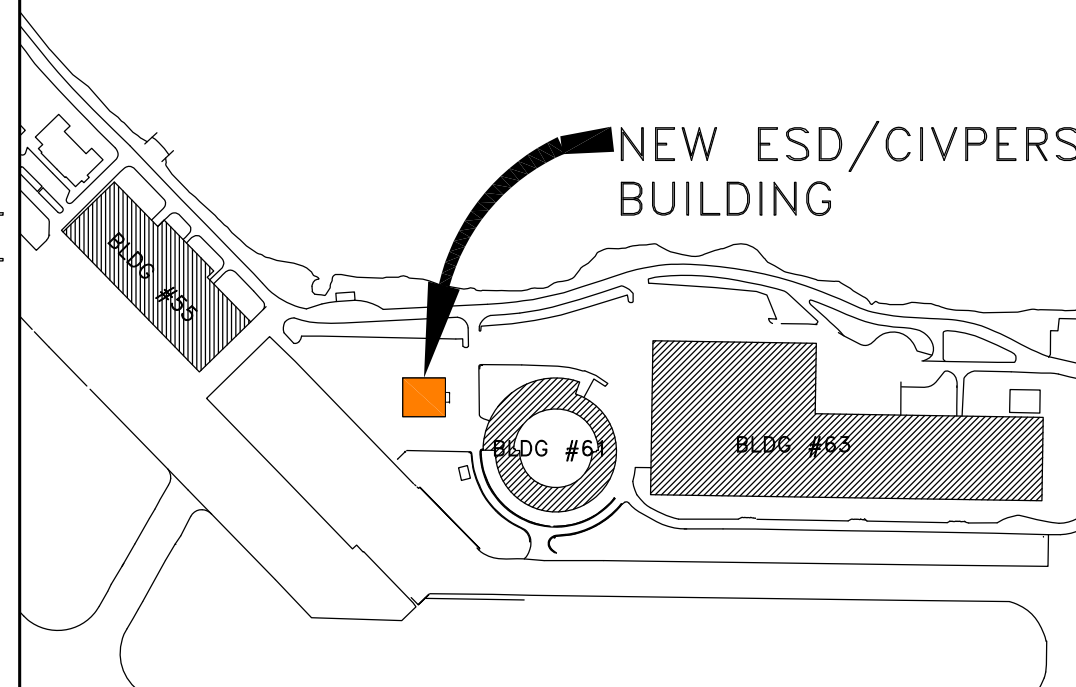
VICINITY MAP

USCG BSU
ELIZABETH CITY



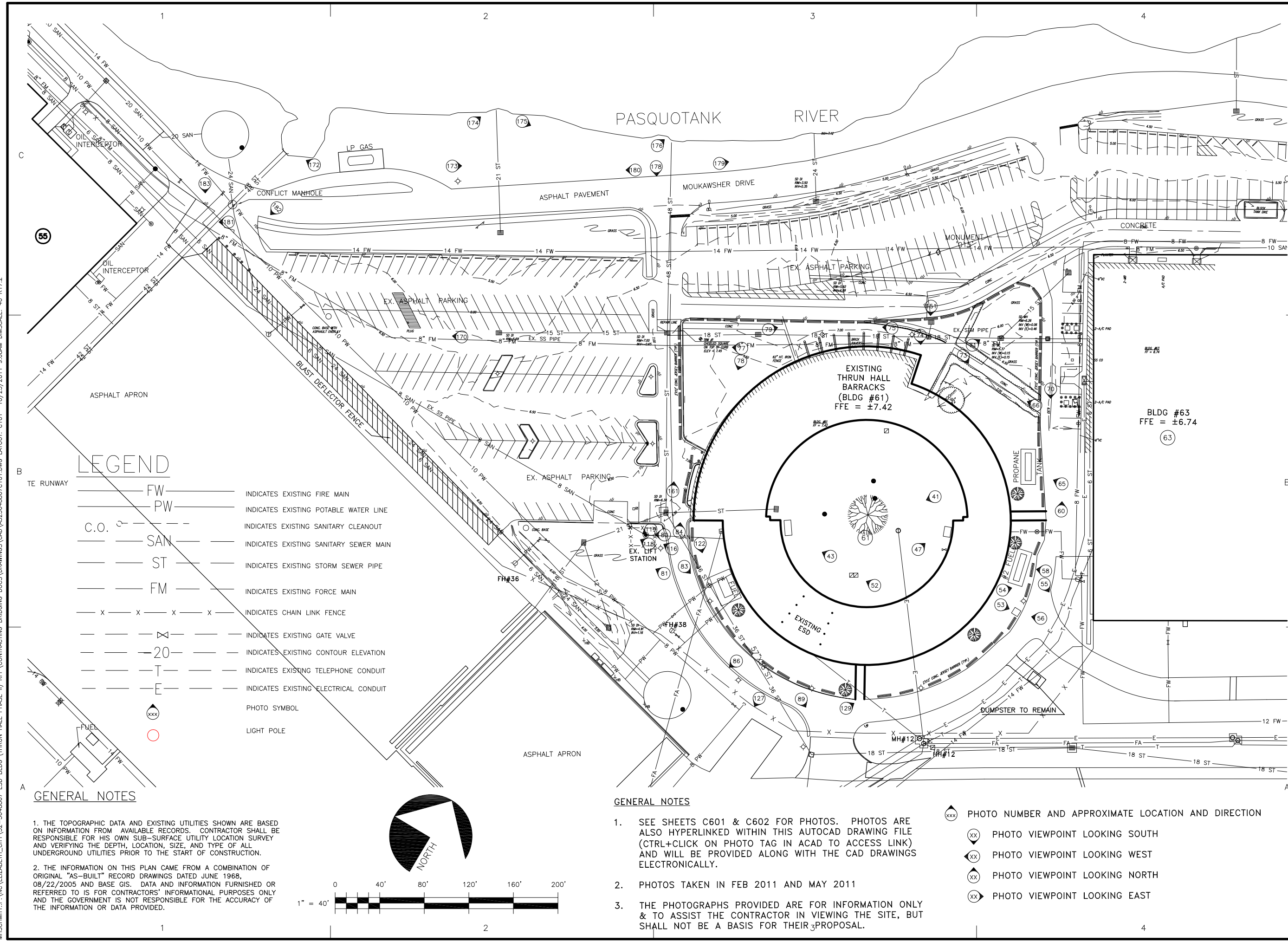
LOCATION MAP

NEW ESD/CIVPERS
BUILDING



DRAWING INDEX

DRWG NO.	SHEET NO.	DISCIPLINE	DRAWING TITLE	
A323648867T101	1 OF 11	T101	GENERAL	TITLE SHEET
A323648867C101	2 OF 11	C101	CIVIL	EXISTING CONDITIONS
A323648867C102	3 OF 11	C102	CIVIL	DEMOLITION PLAN
A323648867C103	4 OF 11	C103	CIVIL	CONCEPT SITE PLAN
A323648867C601	5 OF 11	C601	CIVIL	PHOTOS SHEET
A323648867C602	6 OF 11	C602	CIVIL	PHOTOS SHEET
A323648867A101	7 OF 11	A101	ARCHITECTURAL	FLOOR PLAN
A323648867A301	8 OF 11	A301	ARCHITECTURAL	SECTIONS & MISC
A323648867A401	9 OF 11	A401	ARCHITECTURAL	PARTIAL PLANS & SCHEDULES
A323648867O101	10 OF 11	O101	OUTFITTING	OUTFITTING PLAN
A323648867O102	11 OF 11	O102	OUTFITTING	OUTFITTING PLAN & SCHEDULES



D/B RFP DOCS
OCT 2011

**U. S. COAST GUARD
FACILITIES DESIGN &
CONSTRUCTION CENTER**



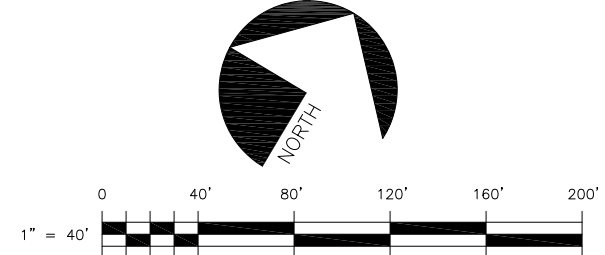
5505 ROBIN HOOD ROAD SUITE K
NORFOLK, VIRGINIA 23513-2431

LEGEND

- FW ——— INDICATES EXISTING FIRE MAIN
- PW ——— INDICATES EXISTING POTABLE WATER LINE
- C.O. - - - INDICATES EXISTING SANITARY CLEANOUT
- SAN ——— INDICATES EXISTING SANITARY SEWER MAIN
- ST ——— INDICATES EXISTING STORM SEWER PIPE
- FM ——— INDICATES EXISTING FORCE MAIN
- X X X X X INDICATES CHAIN LINK FENCE
- ⊗ ——— INDICATES EXISTING GATE VALVE
- 20 ——— INDICATES EXISTING CONTOUR ELEVATION
- T ——— INDICATES EXISTING TELEPHONE CONDUIT
- E ——— INDICATES EXISTING ELECTRICAL CONDUIT
- xxx PHOTO SYMBOL
- LIGHT POLE

GENERAL NOTES

1. THE TOPOGRAPHIC DATA AND EXISTING UTILITIES SHOWN ARE BASED ON INFORMATION FROM AVAILABLE RECORDS. CONTRACTOR SHALL BE RESPONSIBLE FOR HIS OWN SUB-SURFACE UTILITY LOCATION SURVEY AND VERIFYING THE DEPTH, LOCATION, SIZE, AND TYPE OF ALL UNDERGROUND UTILITIES PRIOR TO THE START OF CONSTRUCTION.
2. THE INFORMATION ON THIS PLAN CAME FROM A COMBINATION OF ORIGINAL "AS-BUILT" RECORD DRAWINGS DATED JUNE 1968, 08/22/2005 AND BASE GIS. DATA AND INFORMATION FURNISHED OR REFERRED TO IS FOR CONTRACTORS' INFORMATIONAL PURPOSES ONLY AND THE GOVERNMENT IS NOT RESPONSIBLE FOR THE ACCURACY OF THE INFORMATION OR DATA PROVIDED.



GENERAL NOTES

1. SEE SHEETS C601 & C602 FOR PHOTOS. PHOTOS ARE ALSO HYPERLINKED WITHIN THIS AUTOCAD DRAWING FILE (CTRL+CLICK ON PHOTO TAG IN ACAD TO ACCESS LINK) AND WILL BE PROVIDED ALONG WITH THE CAD DRAWINGS ELECTRONICALLY.
2. PHOTOS TAKEN IN FEB 2011 AND MAY 2011
3. THE PHOTOGRAPHS PROVIDED ARE FOR INFORMATION ONLY & TO ASSIST THE CONTRACTOR IN VIEWING THE SITE, BUT SHALL NOT BE A BASIS FOR THEIR PROPOSAL.

- xxx PHOTO NUMBER AND APPROXIMATE LOCATION AND DIRECTION
- ⊗ PHOTO VIEWPOINT LOOKING SOUTH
- ⊙ PHOTO VIEWPOINT LOOKING WEST
- ⊕ PHOTO VIEWPOINT LOOKING NORTH
- ⊗ PHOTO VIEWPOINT LOOKING EAST

MARK	DATE	DESCRIPTION

A/E PROJECT NO:
CAD FILE NAME: A323648867C101.dwg
DESIGNED BY:
DRAWN BY:
EDITED BY:
CHECKED BY:

SCALE: PLOT SCALE: 1 : 1

SHEET TITLE
CONSTRUCT NEW ESD/CVPSERS BUILDING
USCG BASE
ELIZABETH CITY NC
BUILDING #62
CIVIL
EXISTING CONDITIONS PLAN

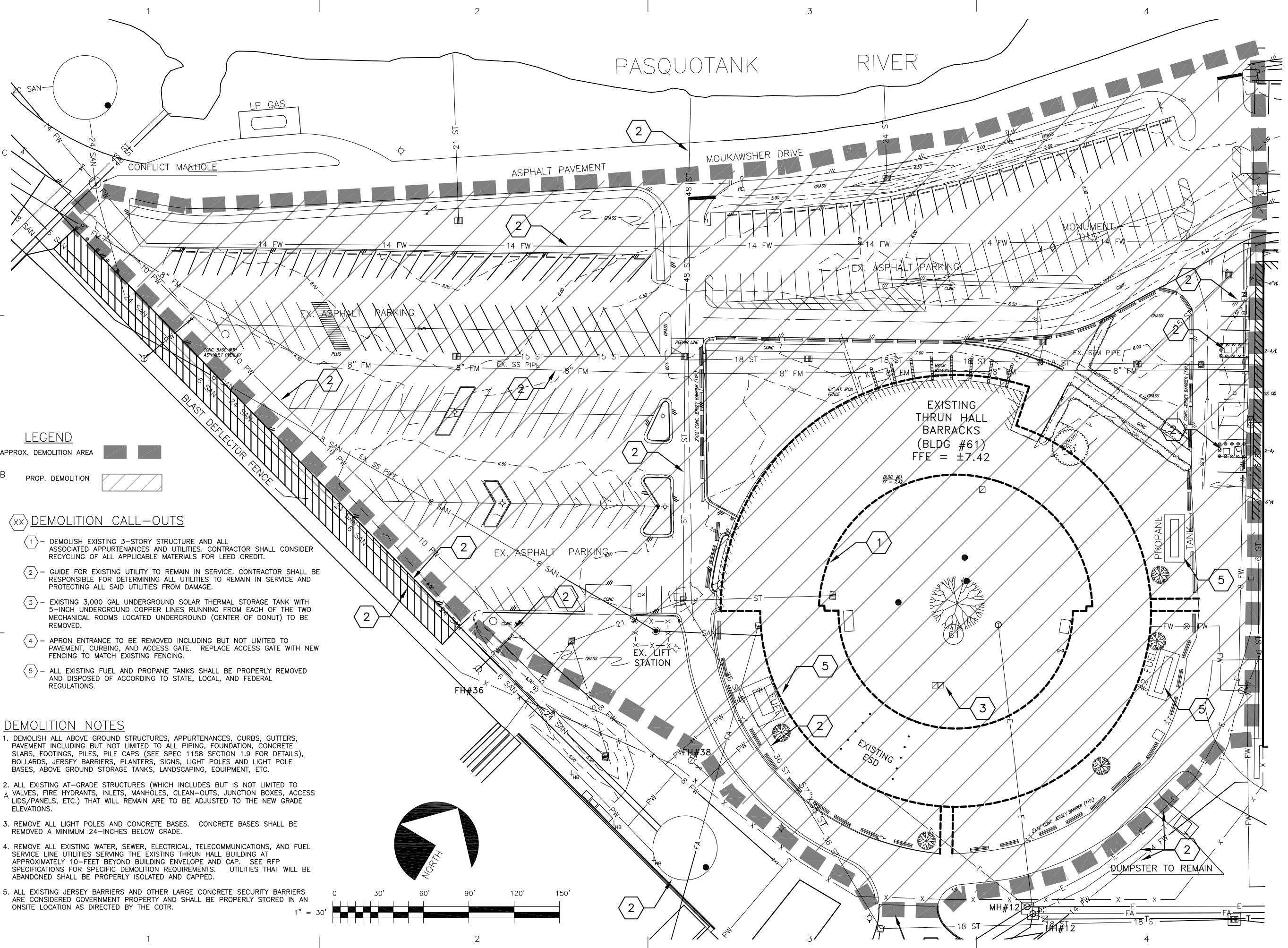
REVIEWED BY:	REVIEWED BY:	REVIEWED BY:
PROJECT ENG.	BRANCH CHIEF	TECH. DIRECTOR

APPROVING OFFICER _____ DATE _____

PROJECT NUMBER	DRAWING NUMBER
32-3648867	A323648867C101
DISCIPLINE/SHT NO	SHEET 2 OF 11
C101	

M:\SCHMITT\PA\NC\ELIZABETH_CITY\32-3648867_ESD_BLDG (THRU HALL PHASE II) RFP\CONTRACTING BRIDGING DOCS\DRAWINGS\CAD\A323648867C101.DWG LAYOUT: C101 10/25/2011 9:08AM DIMSCALE: 40 R17.2

M:\SCHMITT\PROJECTS\ELIZABETH_CITY\32-3648867\PHASE 1\ RFP CONTRACTING BRIDGING DOCS\DRAWINGS\CAD\323648867\C102.DWG LAYOUT: C102 10/25/2011 9:11AM DIMSCALE: 40 R17.2



- LEGEND**
- APPROX. DEMOLITION AREA
 - PROP. DEMOLITION

- DEMOLITION CALL-OUTS**
- 1 - DEMOLISH EXISTING 3-STORY STRUCTURE AND ALL ASSOCIATED APPURTENANCES AND UTILITIES. CONTRACTOR SHALL CONSIDER RECYCLING OF ALL APPLICABLE MATERIALS FOR LEED CREDIT.
 - 2 - GUIDE FOR EXISTING UTILITY TO REMAIN IN SERVICE. CONTRACTOR SHALL BE RESPONSIBLE FOR DETERMINING ALL UTILITIES TO REMAIN IN SERVICE AND PROTECTING ALL SAID UTILITIES FROM DAMAGE.
 - 3 - EXISTING 3,000 GAL UNDERGROUND SOLAR THERMAL STORAGE TANK WITH 5-INCH UNDERGROUND COPPER LINES RUNNING FROM EACH OF THE TWO MECHANICAL ROOMS LOCATED UNDERGROUND (CENTER OF DONUT) TO BE REMOVED.
 - 4 - APRON ENTRANCE TO BE REMOVED INCLUDING BUT NOT LIMITED TO PAVEMENT, CURBING, AND ACCESS GATE. REPLACE ACCESS GATE WITH NEW FENCING TO MATCH EXISTING FENCING.
 - 5 - ALL EXISTING FUEL AND PROPANE TANKS SHALL BE PROPERLY REMOVED AND DISPOSED OF ACCORDING TO STATE, LOCAL, AND FEDERAL REGULATIONS.

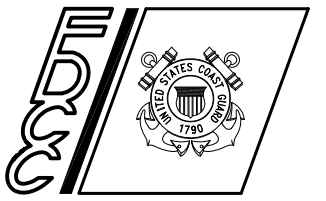
- DEMOLITION NOTES**
1. DEMOLISH ALL ABOVE GROUND STRUCTURES, APPURTENANCES, CURBS, GUTTERS, PAVEMENT INCLUDING BUT NOT LIMITED TO ALL PIPING, FOUNDATION, CONCRETE SLABS, FOOTINGS, PILES, PILE CAPS (SEE SPEC 1158 SECTION 1.9 FOR DETAILS), BOLLARDS, JERSEY BARRIERS, PLANTERS, SIGNS, LIGHT POLES AND LIGHT POLE BASES, ABOVE GROUND STORAGE TANKS, LANDSCAPING, EQUIPMENT, ETC.
 2. ALL EXISTING AT-GRADE STRUCTURES (WHICH INCLUDES BUT IS NOT LIMITED TO VALVES, FIRE HYDRANTS, INLETS, MANHOLES, CLEAN-OUTS, JUNCTION BOXES, ACCESS LIDS/PANELS, ETC.) THAT WILL REMAIN ARE TO BE ADJUSTED TO THE NEW GRADE ELEVATIONS.
 3. REMOVE ALL LIGHT POLES AND CONCRETE BASES. CONCRETE BASES SHALL BE REMOVED A MINIMUM 24-INCHES BELOW GRADE.
 4. REMOVE ALL EXISTING WATER, SEWER, ELECTRICAL, TELECOMMUNICATIONS, AND FUEL SERVICE LINE UTILITIES SERVING THE EXISTING THRUN HALL BUILDING AT APPROXIMATELY 10- FEET BEYOND BUILDING ENVELOPE AND CAP. SEE RFP SPECIFICATIONS FOR SPECIFIC DEMOLITION REQUIREMENTS. UTILITIES THAT WILL BE ABANDONED SHALL BE PROPERLY ISOLATED AND CAPPED.
 5. ALL EXISTING JERSEY BARRIERS AND OTHER LARGE CONCRETE SECURITY BARRIERS ARE CONSIDERED GOVERNMENT PROPERTY AND SHALL BE PROPERLY STORED IN AN ONSITE LOCATION AS DIRECTED BY THE COTR.

CONSULTANTS

D/B RFP DOCS

OCT 2011

**U. S. COAST GUARD
FACILITIES DESIGN &
CONSTRUCTION CENTER**



5505 ROBIN HOOD ROAD SUITE K
NORFOLK, VIRGINIA 23513-2431

ISSUE		
MARK	DATE	DESCRIPTION

A/E PROJECT NO:
CAD FILE NAME: A323648867C101.dwg
DESIGNED BY:
DRAWN BY:
EDITED BY:
CHECKED BY:

SCALE: PLOT SCALE: 1 : 1

SHEET TITLE

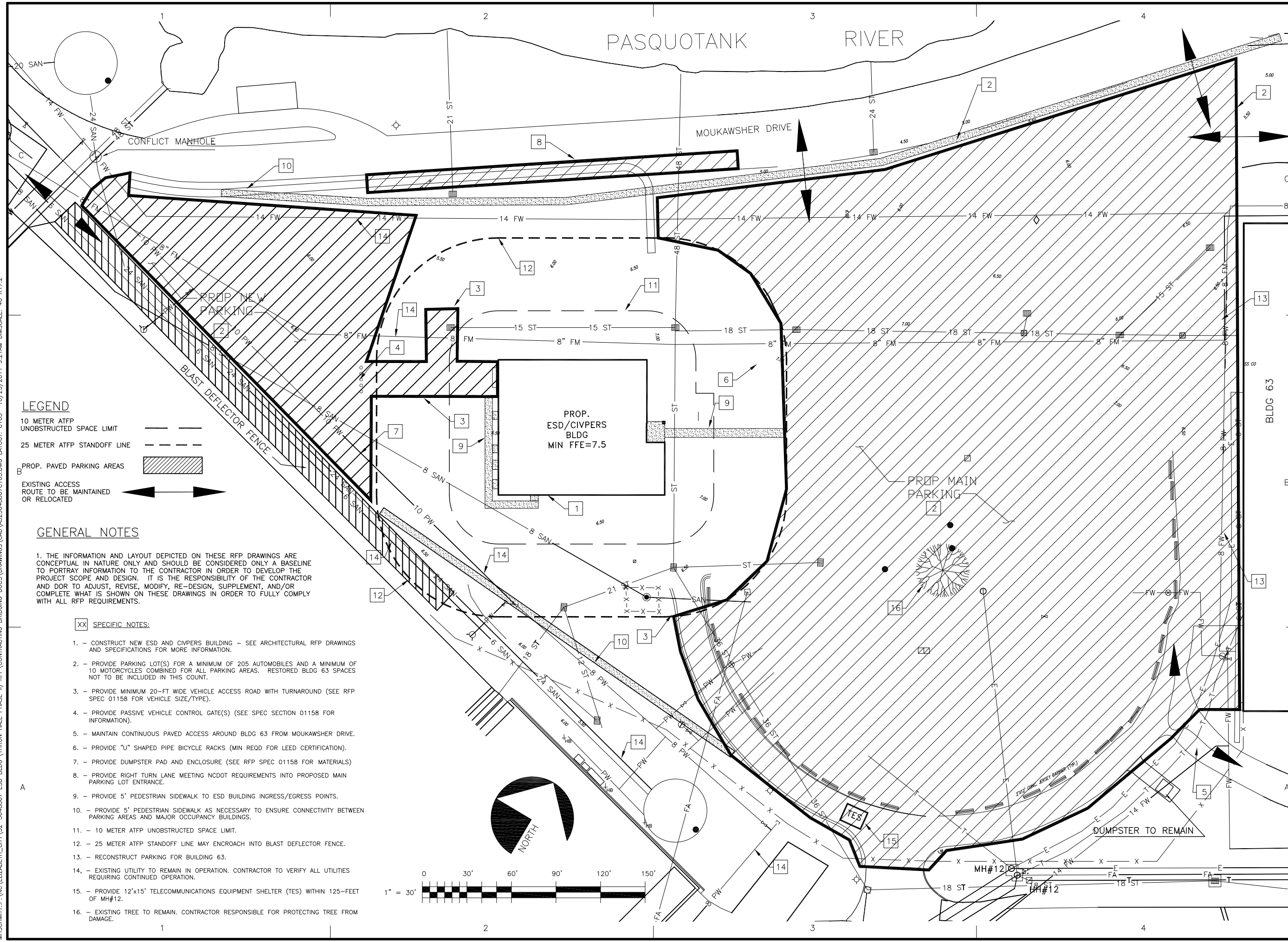
**CONSTRUCT NEW ESD/CI/PEPS BUILDING
USCG BASE
ELIZABETH CITY NC
BUILDING #62
CIVIL
DEMOLITION PLAN**

REVIEWED BY:	REVIEWED BY:	REVIEWED BY:
PROJECT ENG.	BRANCH CHIEF	TECH. DIRECTOR

APPROVING OFFICER	DATE
-------------------	------

PROJECT NUMBER	DRAWING NUMBER
32-3648867	A323648867C102

DISCIPLINE/SHT NO	SHEET	OF	TOTAL SHEETS
C102	3	OF	11



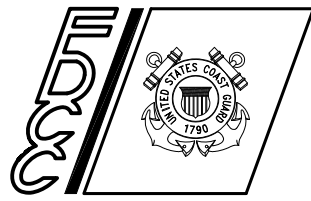
- LEGEND**
- 10 METER ATFP UNOBSTRUCTED SPACE LIMIT
 - 25 METER ATFP STANDOFF LINE
 - PROP. PAVED PARKING AREAS
 - EXISTING ACCESS ROUTE TO BE MAINTAINED OR RELOCATED

- GENERAL NOTES**
1. THE INFORMATION AND LAYOUT DEPICTED ON THESE RFP DRAWINGS ARE CONCEPTUAL IN NATURE ONLY AND SHOULD BE CONSIDERED ONLY A BASELINE TO PORTRAY INFORMATION TO THE CONTRACTOR IN ORDER TO DEVELOP THE PROJECT SCOPE AND DESIGN. IT IS THE RESPONSIBILITY OF THE CONTRACTOR AND DOR TO ADJUST, REVISE, MODIFY, RE-DESIGN, SUPPLEMENT, AND/OR COMPLETE WHAT IS SHOWN ON THESE DRAWINGS IN ORDER TO FULLY COMPLY WITH ALL RFP REQUIREMENTS.
- XX SPECIFIC NOTES:**
1. - CONSTRUCT NEW ESD AND CIVPERS BUILDING - SEE ARCHITECTURAL RFP DRAWINGS AND SPECIFICATIONS FOR MORE INFORMATION.
 2. - PROVIDE PARKING LOT(S) FOR A MINIMUM OF 205 AUTOMOBILES AND A MINIMUM OF 10 MOTORCYCLES COMBINED FOR ALL PARKING AREAS. RESTORED BLDG 63 SPACES NOT TO BE INCLUDED IN THIS COUNT.
 3. - PROVIDE MINIMUM 20-FT WIDE VEHICLE ACCESS ROAD WITH TURNAROUND (SEE RFP SPEC 01158 FOR VEHICLE SIZE/TYPE).
 4. - PROVIDE PASSIVE VEHICLE CONTROL GATE(S) (SEE SPEC SECTION 01158 FOR INFORMATION).
 5. - MAINTAIN CONTINUOUS PAVED ACCESS AROUND BLDG 63 FROM MOUKAWSHER DRIVE.
 6. - PROVIDE "U" SHAPED PIPE BICYCLE RACKS (MIN REQD FOR LEED CERTIFICATION).
 7. - PROVIDE DUMPSTER PAD AND ENCLOSURE (SEE RFP SPEC 01158 FOR MATERIALS).
 8. - PROVIDE RIGHT TURN LANE MEETING NCDOT REQUIREMENTS INTO PROPOSED MAIN PARKING LOT ENTRANCE.
 9. - PROVIDE 5' PEDESTRIAN SIDEWALK TO ESD BUILDING INGRESS/EGRESS POINTS.
 10. - PROVIDE 5' PEDESTRIAN SIDEWALK AS NECESSARY TO ENSURE CONNECTIVITY BETWEEN PARKING AREAS AND MAJOR OCCUPANCY BUILDINGS.
 11. - 10 METER ATFP UNOBSTRUCTED SPACE LIMIT.
 12. - 25 METER ATFP STANDOFF LINE MAY ENCR OACH INTO BLAST DEFLECTOR FENCE.
 13. - RECONSTRUCT PARKING FOR BUILDING 63.
 14. - EXISTING UTILITY TO REMAIN IN OPERATION. CONTRACTOR TO VERIFY ALL UTILITIES REQUIRING CONTINUED OPERATION.
 15. - PROVIDE 12'x15' TELECOMMUNICATIONS EQUIPMENT SHELTER (TES) WITHIN 125- FEET OF MH#12.
 16. - EXISTING TREE TO REMAIN. CONTRACTOR RESPONSIBLE FOR PROTECTING TREE FROM DAMAGE.

CONSULTANTS

D/B RFP DOCS
OCT 2011

**U. S. COAST GUARD
FACILITIES DESIGN &
CONSTRUCTION CENTER**



5505 ROBIN HOOD ROAD SUITE K
NORFOLK, VIRGINIA 23513-2431

MARK	DATE	DESCRIPTION

A/E PROJECT NO:
CAD FILE NAME: A323648867C102.dwg
DESIGNED BY:
DRAWN BY:
EDITED BY:
CHECKED BY:

SCALE: PLOT SCALE: 1 : 1

**CONSTRUCT NEW ESD/CIVPERS BUILDING
USCG BASE**
ELIZABETH CITY NC
BUILDING #62
CIVIL
CONCEPT PLAN

REVIEWED BY:	REVIEWED BY:	REVIEWED BY:
PROJECT ENG.	BRANCH CHIEF	TECH. DIRECTOR

APPROVING OFFICER _____ DATE _____

PROJECT NUMBER **32-3648867** DRAWING NUMBER **A323648867C103**

DISCIPLINE/SHT NO **C103** SHEET **4** OF **11**

M:\SCHMITT\PA\NC\ELIZABETH_CITY\32-3648867_ESD_BLDG (THRUN_HALL_PHASE II) RFP\CONTRACTING_BRIDGING_DOCS\DRAWINGS\CAD\A323648867C601.DWG LAYOUT: C601 10/25/2011 9:23AM DIMSCALE: 40 R17.2



41



43



47



52



53



54



55



56



58



60



65



66



70



71



73



74



75



77



78



79



80



81



83



84

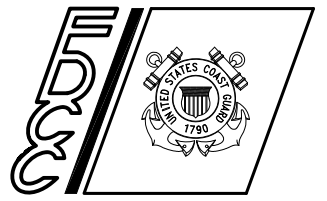


86

CONSULTANTS

D/B RFP DOCS
OCT 2011

**U. S. COAST GUARD
FACILITIES DESIGN &
CONSTRUCTION CENTER**



5505 ROBIN HOOD ROAD SUITE K
NORFOLK, VIRGINIA 23513-2431

MARK	DATE	DESCRIPTION

A/E PROJECT NO:
CAD FILE NAME: A323648867C101.dwg
DESIGNED BY:
DRAWN BY:
EDITED BY:
CHECKED BY:

SCALE: PLOT SCALE: 1 : 1

SHEET TITLE
CONSTRUCT NEW ESD/CIPERS BUILDING
USCG BASE
ELIZABETH CITY NC
BUILDING #62
CIVIL
PHOTOS SHEET

REVIEWED BY:	REVIEWED BY:	REVIEWED BY:
PROJECT ENG.	BRANCH CHIEF	TECH. DIRECTOR

APPROVING OFFICER _____ DATE _____

PROJECT NUMBER: **32-3648867** DRAWING NUMBER: **A323648867C601**

DISCIPLINE/SHT NO: **C601** SHEET **5** OF **11**

M:\SCHMITT\PA\NC\ELIZABETH_CITY\32-3648867 ESD BLDG (THRUIN HALL PHASE II) RFP\CONTRACTING BRIDGING DOCS\DRAWINGS\CAD\A323648867C602.DWG LAYOUT: C602 10/25/2011 9:26AM DIMSCALE: 40 R17.2



89



116



118



119



122



127



129



151



161



170



172



173



174



175



176



178



179



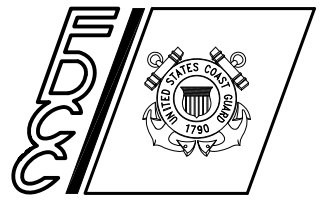
180

CONSULTANTS

D/B RFP DOCS
OCT 2011

--	--

**U. S. COAST GUARD
FACILITIES DESIGN &
CONSTRUCTION CENTER**



5505 ROBIN HOOD ROAD SUITE K
NORFOLK, VIRGINIA 23513-2431

ISSUE		
MARK	DATE	DESCRIPTION

A/E PROJECT NO:
CAD FILE NAME: A323648867C101.dwg
DESIGNED BY:
DRAWN BY:
EDITED BY:
CHECKED BY:

SCALE: PLOT SCALE: 1 : 1

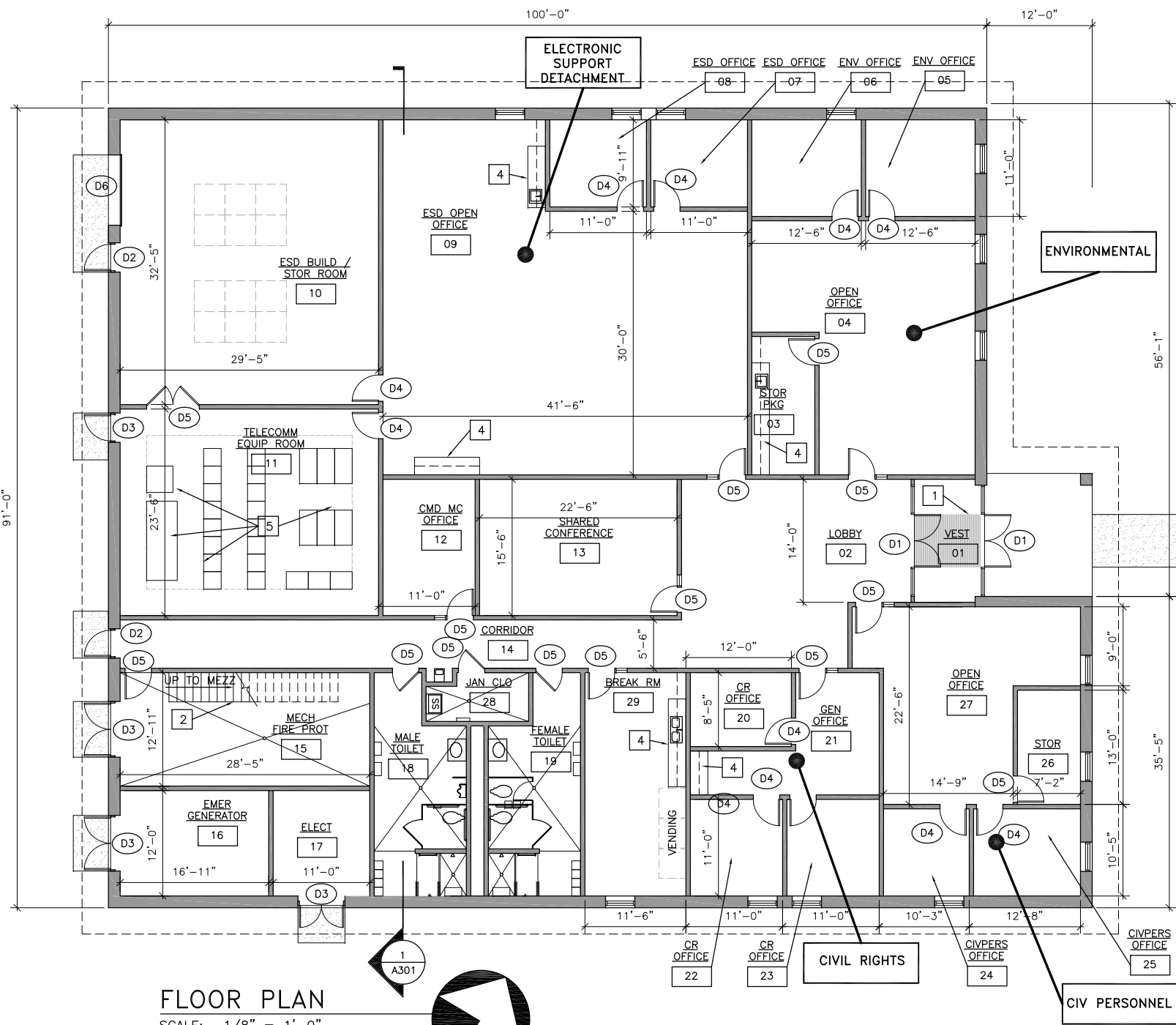
SHEET TITLE
**CONSTRUCT NEW ESD/CIVPERS BUILDING
USCG BASE
ELIZABETH CITY NC
BUILDING #62
CIVIL
PHOTOS SHEET**

REVIEWED BY:	REVIEWED BY:	REVIEWED BY:
PROJECT ENG.	BRANCH CHIEF	TECH. DIRECTOR

APPROVING OFFICER _____ DATE _____

PROJECT NUMBER	DRAWING NUMBER
32-3648867	A323648867C602

DISCIPLINE/SHT NO	SHEET	OF	11
C602	6	OF	11



FLOOR PLAN
SCALE: 1/8" = 1'-0"

- SEE SECTION 01158 OF THE SPECIFICATIONS FOR DETAILED REQUIREMENTS.
- LEGEND:**
- ⊗ FLOOR DRAIN (FD)
 - (D7) DOOR TYPE (SEE DOOR SCHEDULE)
 - ## EQUIPMENT TAG
 - ## CONSTRUCTION NOTE
 - VD QUAD OUTLET 2-VOICE & 2-DATA
 - W WALL PHONE OUTLET

- GENERAL NOTES:** (FOR SHEETS A101 THROUGH A103)
1. INTERIOR WALLS SHALL RUN FULL HEIGHT FROM FLOOR TO SECONDARY CEILING AT BOTTOM OF ROOF STRUCTURE ABOVE TO PROVIDE SOUND ISOLATION BETWEEN SPACES. ALL PARTITIONS SHALL HAVE SOUND BATT INSULATION.
 2. DIMENSIONS PROVIDED ARE MINIMUM & MAY NEED TO VARY AS THE DESIGN IS DEVELOPED AFTER CONTRACT AWARD. ADDITIONAL MECHANICAL, ELECTRICAL & OTHER UTILITY SPACE MAY BE REQUIRED TO ACCOMMODATE THE CONTRACTOR'S DESIGN. THE CONTRACTOR SHALL PROVIDE THESE SPACES WITHOUT DECREASING THE SIZE OF OTHER SPACES, NOR CAN THE OVERALL AREA OF THE BUILDING DECREASE. THE CONTRACT SUM WILL NOT BE INCREASED FOR ADDITIONAL SPACES OR AREA REQUIRED TO PROVIDE A COMPLETE & USEABLE FACILITY, & ACCOMMODATE THE CONTRACTOR'S DESIGN.
 - NO ATTEMPT HAS BEEN MADE TO INDICATE ANY STRUCTURAL COLUMNS THAT MAY BE REQUIRED. COLUMNS REQUIRED BY THE CONTRACTOR'S DESIGN SHALL NOT AFFECT THE LAYOUT & SHALL BE LOCATED WITHIN OR INCORPORATED WITH WALLS.
 3. PROVIDE EXTERIOR LANDINGS, STEPS & RAMPS AS REQUIRED TO ACCOMMODATE TRANSITION FROM BUILDING FINISH FLOOR TO NEW FINISH GRADES. ALL PERSONNEL ENTRANCES SHALL BE HANDICAPPED ACCESSIBLE.
 4. SEE SHEET A401 FOR LARGE SCALE TOILET PLANS.
 5. IT EQUIPMENT. SEE RFP SPECIFICATIONS.
 6. THE NUMBER OF WINDOWS INDICATED ARE MINIMUM & MAY BE INCREASED TO SUIT THE CONTRACTOR'S PROPOSED DESIGN. THE WINDOW LOCATIONS ARE SUGGESTIVE & MAY ALSO CHANGE TO SUIT THE CONTRACTOR'S PROPOSED DESIGN.

- XX SPECIFIC NOTES: (SHEET A101 ONLY)
1. PROVIDE RECESSED WALK-OFF MAT
 2. PROVIDE STEEL STAIRS TO MECHANICAL MEZZANINE IN ATTIC.
 3. TELECOMM RACKS SEE RFP SPECIFICATIONS FOR REQUIREMENTS.
 4. PROVIDE CASEWORK (SEE SHEET A401)

D/B RFP DOCS
OCT 2011

**U. S. COAST GUARD
FACILITIES DESIGN &
CONSTRUCTION CENTER**

5505 ROBIN HOOD ROAD SUITE K
NORFOLK, VIRGINIA 23513-2431

MARK	DATE	DESCRIPTION

A/E PROJECT NO:
CAD FILE NAME: A323648867A101.dwg
DESIGNED BY:
DRAWN BY:
EDITED BY:
CHECKED BY:

SCALE: PLOT SCALE: 1 : 1

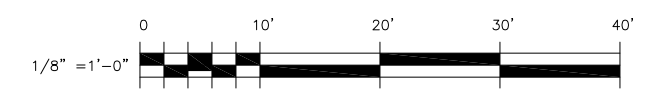
SHEET TITLE
**CONSTRUCT NEW ESD/CIVPERS BUILDING
USCG BASE**
ELIZABETH CITY NC
**BUILDING #62
ARCHITECTURE
FLOOR PLAN**

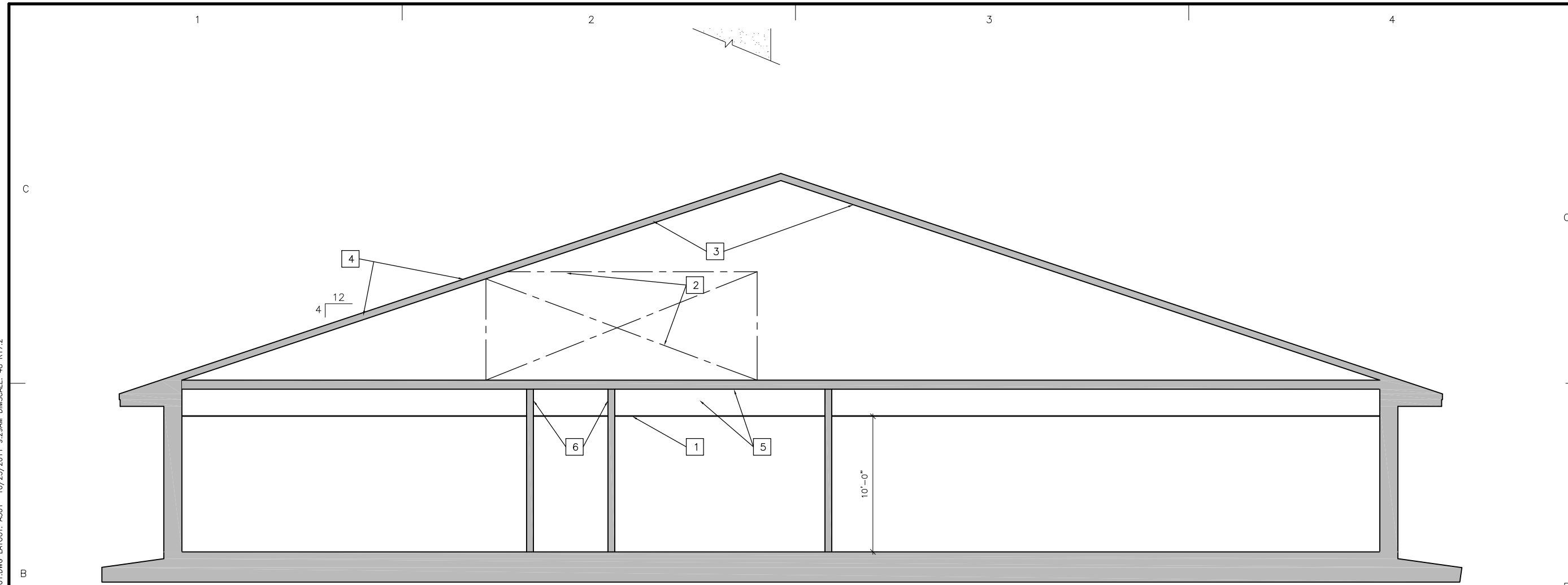
REVIEWED BY:	REVIEWED BY:	REVIEWED BY:
PROJECT ENG.	BRANCH CHIEF	TECH. DIRECTOR

APPROVING OFFICER	DATE
-------------------	------

PROJECT NUMBER	DRAWING NUMBER
32-3648867	A323648867A101

DISCIPLINE/SHT NO	SHEET	OF	11
A101	7	OF	11



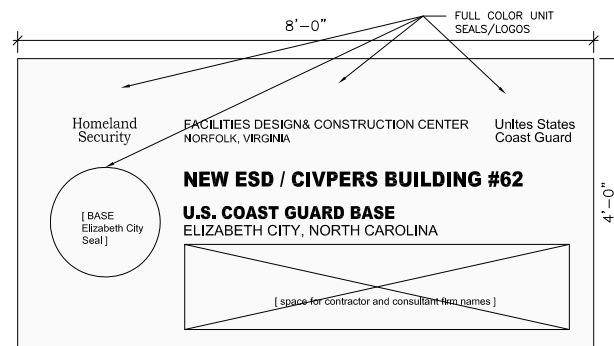


BUILDING SECTION

SCALE: 1/4" = 1'-0"

XX CONSTRUCTION NOTES: (FOR SHEETS A301)

1. SUSPENDED CEILING HEIGHT (SEE FINISH SCHEDULE ON A401).
2. PROVIDE CLEAR MECHANICAL MEZZANINE AREA WITH MINIMUM CLEAR HEIGHT OF 8'-0". MEZZANINE PLAN AREA SHALL BE AS REQUIRED TO HOUSE & SERVICE THE MECHANICAL EQUIPMENT.
3. PROVIDE SEALED ATTIC WITH ROOF INSULATION AT ROOF LEVEL.
4. PROVIDE SLOPED PRE-FINISHED STANDING SEAM METAL ROOFING W/ SLOPE NO LESS THAN 6 IN 12.
5. PROVIDE SECONDARY CEILING CONSISTING OF UNPAINTED GYPSUM WALL BOARD. GWB SHALL BE TAPED & SPACKLED. SPACE BETWEEN SECONDARY CEILING & SUSPENDED FINISH CEILING SHALL BE AS REQUIRED TO ACCOMMODATE BUILDING SYSTEMS (SPRINKLER PIPING, CONDUIT CABLE TRAYS, DUCTS, LIGHTS, ETC.) & MAINTENANCE, BUT SHALL BE 24" MIN.
6. INTERIOR WALLS SHALL RUN FULL HEIGHT FROM FLOOR TO SECONDARY CEILING AT BOTTOM OF ROOF STRUCTURE ABOVE TO PROVIDE SOUND ISOLATION BETWEEN SPACES.



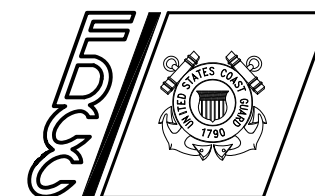
CONSTRUCTION SIGN



CONSULTANTS

D/B RFP DOCS
OCT 2011

**U. S. COAST GUARD
FACILITIES DESIGN &
CONSTRUCTION CENTER**



5505 ROBIN HOOD ROAD SUITE K
NORFOLK, VIRGINIA 23513-2431

ISSUE		
MARK	DATE	DESCRIPTION

A/E PROJECT NO:	
CAD FILE NAME:	A323648867A301.dwg
DESIGNED BY:	
DRAWN BY:	
EDITED BY:	
CHECKED BY:	

SCALE: PLOT SCALE: 1 : 1

SHEET TITLE

**CONSTRUCT NEW ESD/CIVPERS BUILDING
USCG BASE**
ELIZABETH CITY NC
BUILDING #62
ARCHITECTURE
SECTION & MISC

REVIEWED BY:	REVIEWED BY:	REVIEWED BY:
PROJECT ENG.	BRANCH CHIEF	TECH. DIRECTOR

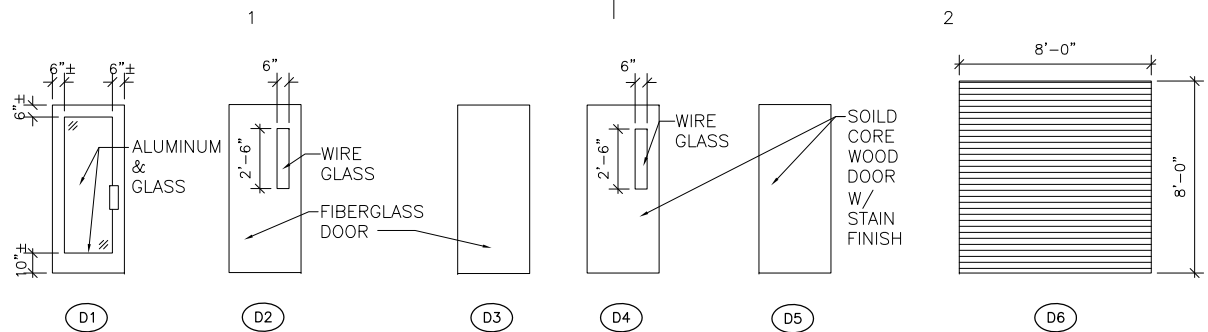
APPROVING OFFICER	DATE
-------------------	------

PROJECT NUMBER	DRAWING NUMBER
----------------	----------------

32-3648867 **A323648867A301**

DISCIPLINE/SHT NO
A301 SHEET **8** OF **11**

M:\SCHMITT\PA\NC\ELIZABETH_CITY\32-3648867_ESD_BLDG (THRUIN_HALL_PHASE II) RFP\CONTRACTING_BRIDGING_DOCS\DRAWINGS\CAD\A323648867A301.DWG LAYOUT: A301 10/25/2011 9:29AM DIMSCALE: 48 R17.2



DOOR TYPES

SCALE: 1/4" = 1'-0"

GENERAL DOOR NOTES:

- VISION LITES:
EXTERIOR DOORS - PROVIDE WIRE GLASS
FIRE RATED DOORS - PROVIDE WIRE GLASS
OTHER DOORS - PROVIDE TEMPERED SAFETY GLASS
- SIZES:
MINIMUM WIDTHS:
ALL DOORS UNLESS OTHERWISE NOTED - 3'-0" WIDE PER LEAF
ELECT CLOSETS - WIDTH AS REQUIRED FOR ACCESS PER CODE
MINIMUM HEIGHT: 7'-0"
EXTERIOR DOOR & FRAME ASSEMBLIES MUST MEET THE STRUCTURAL WIND LOAD REQUIREMENTS.

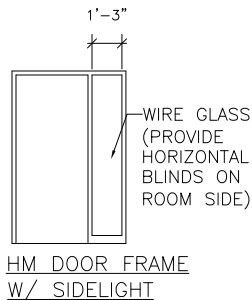
DOOR TYPE	MATERIAL		NOTES
	DOOR	FRAME	
D1	ALUM/GLASS	ALUM	
D2	FIBERGLASS	ALUM	
D3	FIBERGLASS	ALUM	
D4	SC WOOD	HM	
D5	SC WOOD	HM	
D6	INSUL OVRHD	PTD METAL	

NEW WORK NOTES: [X] (APPLY TO THIS SHEET ONLY)

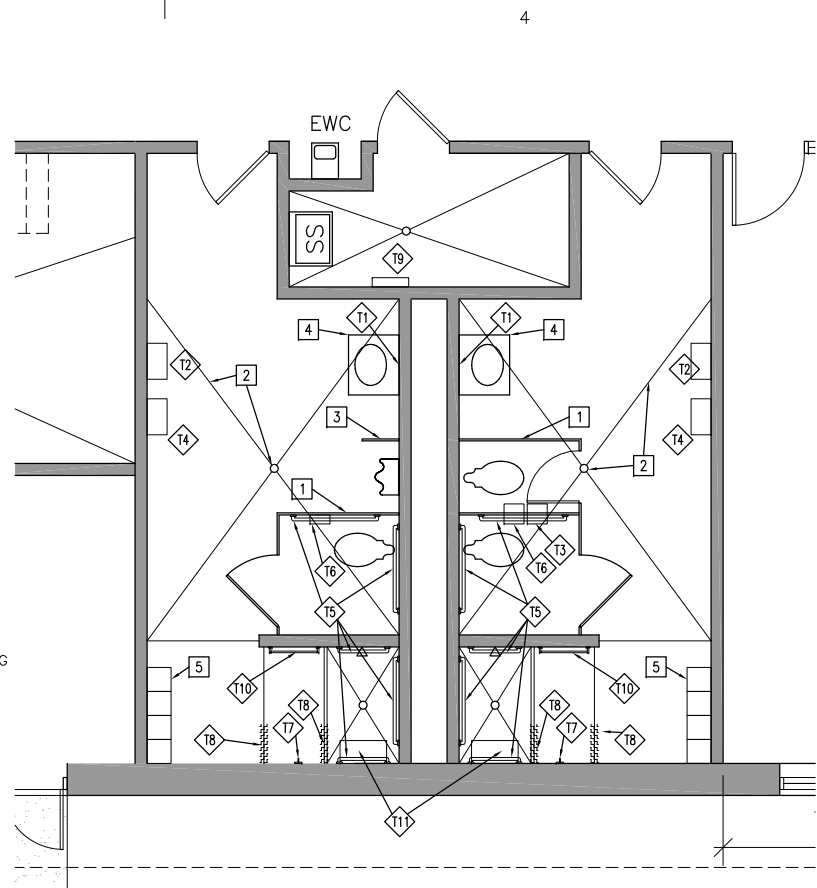
- PROVIDE SOLID HIGH DENSITY POLYETHYLENE (HDPE) CEILING HUNG TOILET PARTITION. MIN. 32"W DOOR. DOOR SHALL BE HUNG WITH INTEGRAL HINGE.
- PROVIDE THICK SET PORCELAIN TILE FLOOR SLOPED TO FLOOR DRAINS.
- PROVIDE 24" SOLID HDPE URINAL SCREEN.
- SYNTHETIC SOLID SURFACE COMBINATION SINK & COUNTER TOP.
- 12"x12"x72" SINGLE TIER LOCKERS ON 6" CONC & PORT BASE

ABBREVIATIONS:

CMU	CONCRETE MASONRY UNIT
CONC	CONCRETE
CPT	CARPET
EP PNT	EPOXY PAINT
EWC	ELECTRIC WATER COOLER
EXP ST	EXPOSED STRUCTURE
FACT	FACTORY
GWB	GYPSUM WALL BOARD
PLAST	PLASTER FINISH
POR T	PORCELAIN TILE
PNT	PAINTED FINISH
RESIL	RESILIENT BASE
RUB	RUBBER - FLEXIBLE IMPACT & SLIP RESISTANT COATING
SACT	SUSPENDED ACOUSTIC CEILING TILE
SS	SERVICE SINK
SWBD MAT	SWITCHBOARD MAT SHEET FLOORING
SHR	SHOWER
SHWR	SHOWER
TERR	TERRAZZO
VCT	VINYL COMPOSITION TILE



HM DOOR FRAME
W/ SIDELIGHT



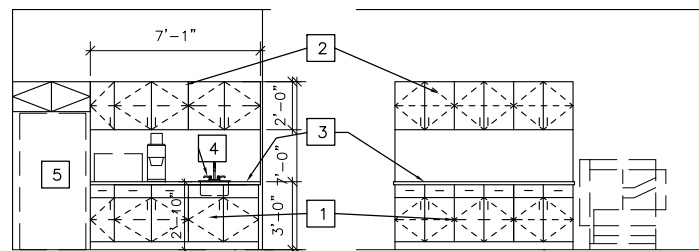
PARTIAL FLOOR PLAN

SCALE: 1/4" = 1'-0"

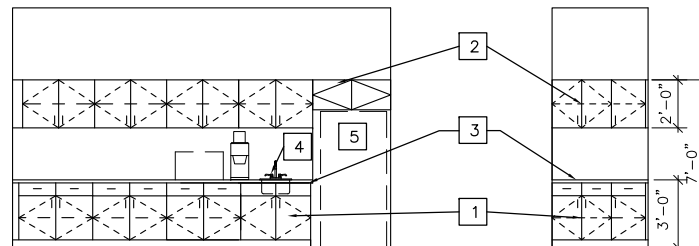
TOILET ACCESSORY SCHEDULE

MARK	DESCRIPTION	MOUNTING HEIGHT	REMARKS
T1	24" X 36" STAINLESS STEEL FRAMED MIRROR	BOTTOM @ 3'-8" AFF	SURFACE MOUNTED
T2	ELECTRIC HAND DRYER	PER UFAS	SURFACE MOUNTED
T3	SANITARY NAPKIN DISPOSAL	BOTTOM @ 3'-5" AFF	SURFACE MOUNTED
T4	WASTE RECEPTACLE	TOP @ 3'-4" AFF	SURFACE MOUNTED
T5	STAINLESS STEEL GRAB BARS	TOP @ 3'-0" AFF	SURFACE MOUNTED
T6	DBLE ROLL TOIL PAPER DISP	BOTTOM @ 30" AFF	SURFACE MOUNTED
T7	ROBE HOOK	TOP @ 5'-6" AFF	SURFACE MOUNTED
T8	1-1/2" O.D. ST. STL. SHOWER ROD AND COMM. GRADE FABRIC CURTAIN	COORD W/ CURTAIN	SURFACE MOUNTED
T9	ST STL SHELF W/ MOP STRIP	BOTTOM @ 5'-8" AFF	SURFACE MOUNTED
T10	24" LONG TOWEL BAR	CENTERLINE @ 4'-0" AFF	SURFACE MOUNTED
T11	FOLD UP HC SHOWER SEAT	PER UFAS	SURFACE MOUNTED

SEE SECTION 01158 FOR ADDITIONAL TOILET ACCESSORIES.



SPACE 09
SPACE 09 SOUTH WALL



SPACE 03
SPACE 21

[X] CABINET NOTES: (THIS SHEET ONLY)

- PLASTIC LAMINATE SURFACED 22" DEEP BASE CABINET.
- PLASTIC LAMINATE SURFACED 12" DEEP UPPER CABINET.
- PLASTIC LAMINATE SURFACED COUNTERTOP WITH FULL HEIGHT SPLASH
- STAINLESS STL SINK WITH FAUCET
- REFRIGERATOR

ROOM FINISH SCHEDULE

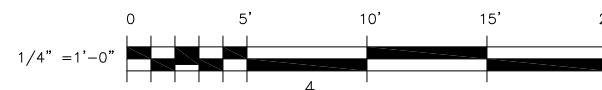
ROOM NUMBER	ROOM NAME	FLOOR	BASE	WALLS		CEILING		HEIGHT	NOTES
				SUB.	FINISH	SUB.	FINISH		
01	VESTIBULE	TERRAZZO	TERR	GWB	PNT	SACT	FACTORY	10'-0"	
02	LOBBY	TERRAZZO	TERR	GWB	PNT	SACT	FACTORY	10'-0"	
03	STOR / PACKING	VCT	RESIL	GWB	PNT	SACT	FACTORY	10'-0"	
04	OPEN OFFICE	CARPET	RESIL	GWB	PNT	SACT	FACTORY	10'-0"	
05	ENV OFFICE	CARPET	RESIL	GWB	PNT	SACT	FACTORY	10'-0"	
06	ENV OFFICE	CARPET	RESIL	GWB	PNT	SACT	FACTORY	10'-0"	
07	ESD OFFICE	CARPET	RESIL	GWB	PNT	SACT	FACTORY	10'-0"	
08	ESD OFFICE	CARPET	RESIL	GWB	PNT	SACT	FACTORY	10'-0"	
09	ESD OPEN OFFICE	CARPET	RESIL	GWB	PNT	SACT	FACTORY	10'-0"	
10	ESD BUILD / STOR ROOM	SEALED CONC	RESIL	GWB/CMU	PNT	GWB	PNT	12'-0"	1
11	TELECOMM EQUIP ROOM	SWBD MAT	RESIL	GWB/CMU	PNT	GWB	PNT	12'-0"	1
12	CMD MC OFFICE	CARPET	RESIL	GWB	PNT	SACT	FACTORY	10'-0"	
13	SHARED CONFERENCE ROOM	CARPET	RESIL	GWB	PNT	SACT	FACTORY	10'-0"	
14	CORRIDOR	TERRAZZO	TERR	GWB	PNT	SACT	FACTORY	10'-0"	
15	MECH / FIRE PROTECTION	SEALED CONC	RESIL	CMU	PNT	GWB	PNT	12'-0"	1
16	EMERG GENERATOR	SEALED CONC	RESIL	CMU	PNT	GWB	PNT	12'-0"	1
17	ELECTRICAL	SEALED CONC	RESIL	CMU	PNT	GWB	PNT	12'-0"	1
18	MALE TOILET	POR T	POR T	GWB	POR T/PNT	GWB	PNT	10'-0"	2
19	FEMALE TOILET	POR T	POR T	GWB	POR T/PNT	GWB	PNT	10'-0"	2
20	CR OFFICE	CARPET	RESIL	GWB	PNT	SACT	FACTORY	10'-0"	
21	GEN OFFICE	CARPET	RESIL	GWB	PNT	SACT	FACTORY	10'-0"	
22	CR OFFICE	CARPET	RESIL	GWB	PNT	SACT	FACTORY	10'-0"	
23	CR OFFICE	CARPET	RESIL	GWB	PNT	SACT	FACTORY	10'-0"	
24	CIVPERS OFFICE	CARPET	RESIL	GWB	PNT	SACT	FACTORY	10'-0"	
25	CIVPERS OFFICE	CARPET	RESIL	GWB	PNT	SACT	FACTORY	10'-0"	
26	STORAGE	CARPET	RESIL	GWB	PNT	SACT	FACTORY	10'-0"	
27	OPEN OFFICE	CARPET	RESIL	GWB	PNT	SACT	FACTORY	10'-0"	
28	JAN CLOSET	TERRAZZO	TERR	GWB	PNT	SACT	FACTORY	10'-0"	

GENERAL FINISH SCHEDULE NOTES:

- ALL WALLS SHALL EXTEND FULL HEIGHT FROM FLOOR TO SECONDARY HARD CEILING.
- PORCELAIN TILE ON WALLS SHALL IN SHOWER BE FULL HEIGHT. ALL OTHER PORCELAIN TILE SHALL BE 5'-0" HIGH
- SLOPE PORCELAIN TILE FLOORS 1" MIN TO FLOOR DRAINS.
- DEPRESS FLOOR SLABS FOR TERRAZZO AND PORCELAIN TILE FLOOR FINISHES TO PROVIDE FLUSH TRANSITION TO OTHER ADJACENT FLOOR SURFACES.
- WHERE PAINT (PNT) FINISH IS CALLED FOR IT SHALL BE SEMI-GLOSS LATEX ENAMEL FOR WALLS AND EGGSHELL LATEX ENAMEL FOR CEILINGS.
- CEILING HEIGHTS INDICATED ARE MINIMUM ALLOWABLE. HIGHER CEILINGS ARE ACCEPTABLE.

ROOM FINISH SCHEDULE NOTES:

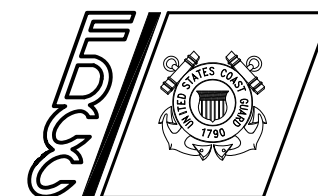
- THE 12'-0" HEIGHT IS MINIMUM & REPRESENTS THE SECONDARY CEILING.
- PROVIDE FULL HEIGHT 12"x12" PORCELAIN TILE ON ALL THREE WALLS IN THE SHOWER STALL. SLOPE SHOWER FLOOR TO DRAIN AWAY FROM LOCKERS.



CONSULTANTS

D/B RFP DOCS
OCT 2011

U. S. COAST GUARD
FACILITIES DESIGN &
CONSTRUCTION CENTER



5505 ROBIN HOOD ROAD SUITE K
NORFOLK, VIRGINIA 23513-2431

MARK	DATE	DESCRIPTION

A/E PROJECT NO:
CAD FILE NAME: A323648867A401.dwg
DESIGNED BY:
DRAWN BY:
EDITED BY:
CHECKED BY:

SCALE: PLOT SCALE: 1 : 1

SHEET TITLE
**CONSTRUCT NEW ESD/CIVPERS BUILDING
USCG BASE**
ELIZABETH CITY NC
**BUILDING #62
ARCHITECTURE**
PARTIAL PLANS & SCHEDULES

REVIEWED BY: REVIEWED BY: REVIEWED BY:
PROJECT ENG. BRANCH CHIEF TECH. DIRECTOR

APPROVING OFFICER DATE

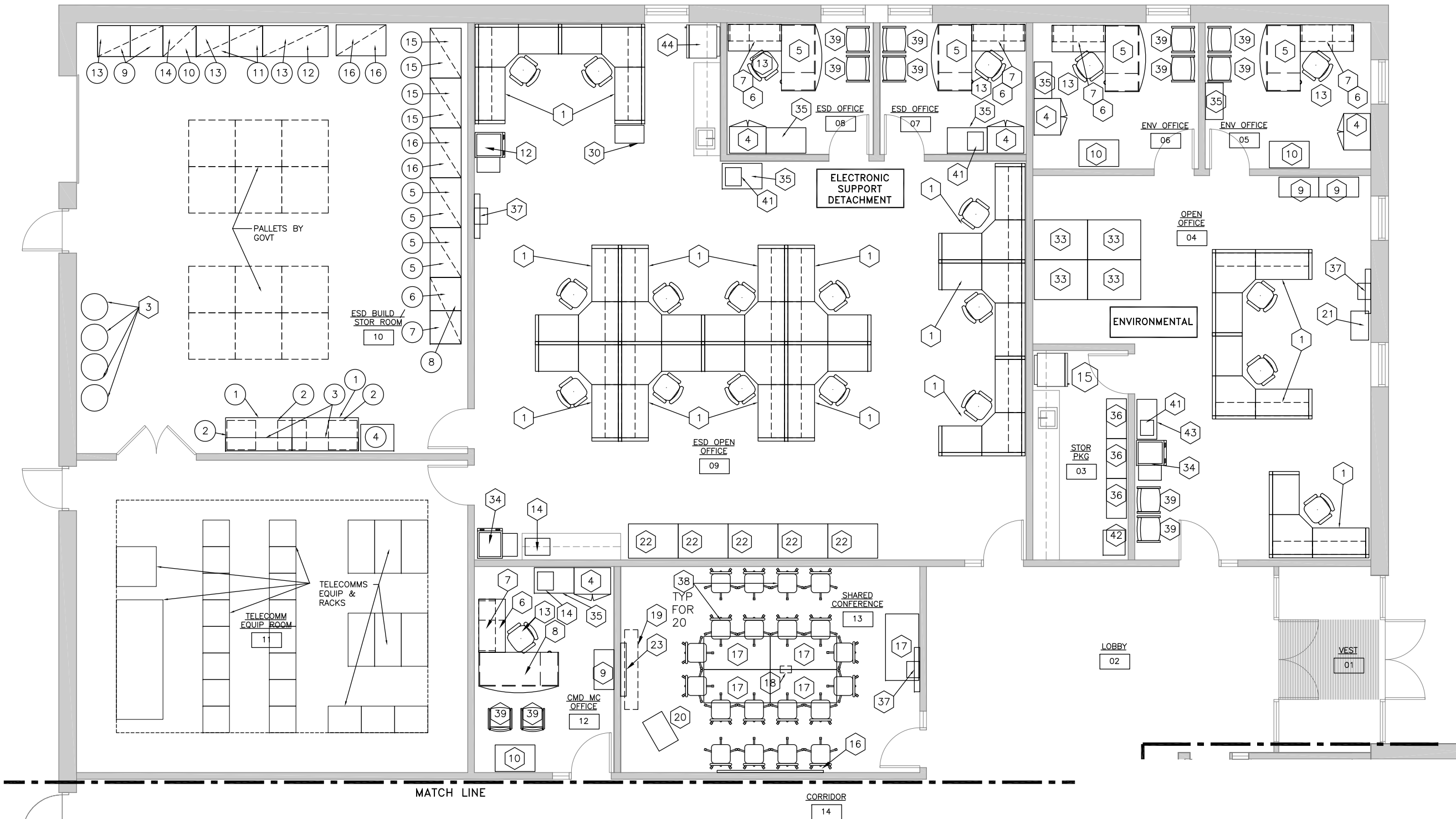
PROJECT NUMBER DRAWING NUMBER

32-3648867 A323648867A401

DISCIPLINE/SHT NO SHEET 9 OF 11

A401

M:\SCHMITT\PA\NC\ELIZABETH_CITY\32-3648867 ESD BLDG (THRUIN HALL PHASE II) RFP\CONTRACTING BRIDGING DOCS\DRAWINGS\CAD\A3236488670101.DWG LAYOUT: 0101 10/25/2011 9:31AM DIMSCALE: 48 R17.2



PARTIAL OUTFITTING FLOOR PLAN
SCALE: 1/4" = 1'-0"



OUTFITTING & EQUIPMENT SYMBOL LEGEND

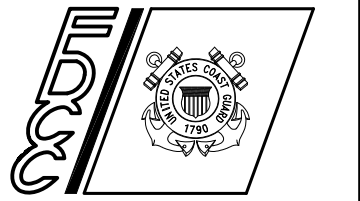
- (XX) OUTFITTING / EQUIPMENT TAG (SEE SHEET 0102 FOR SCHEDULE)
- (XXX) OUTFITTING METAL CABINETS, SHELVING & COUNTERS (SEE RFP SPECIFICATION SECTION 01158, PARAGRAPHS 1.7.14.4)



CONSULTANTS

D/B RFP DOCS
OCT 2011

**U. S. COAST GUARD
FACILITIES DESIGN &
CONSTRUCTION CENTER**



5505 ROBIN HOOD ROAD SUITE K
NORFOLK, VIRGINIA 23513-2431

ISSUE		
MARK	DATE	DESCRIPTION

A/E PROJECT NO:	
CAD FILE NAME:	A3236488670101.dwg
DESIGNED BY:	
DRAWN BY:	
EDITED BY:	
CHECKED BY:	

SCALE: PLOT SCALE: 1 : 1

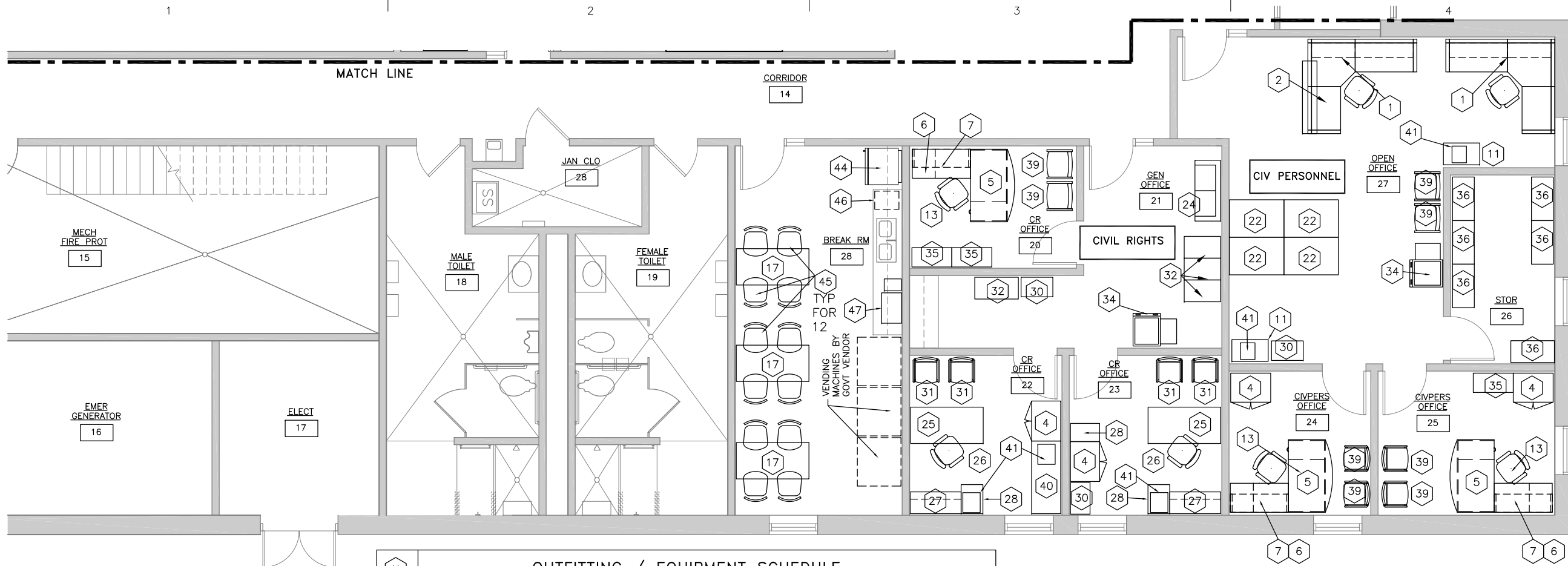
SHEET TITLE
CONSTRUCT NEW ESD/CVRS BUILDING
USCG BASE
ELIZABETH CITY NC
BUILDING #62
ARCHITECTURE
OUTFITTING PLAN

REVIEWED BY:	REVIEWED BY:	REVIEWED BY:
PROJECT ENG.	BRANCH CHIEF	TECH. DIRECTOR

APPROVING OFFICER _____ DATE _____

PROJECT NUMBER **32-3648867** DRAWING NUMBER **A3236488670101**

DISCIPLINE/SHT NO **0101** SHEET **10** OF **11**



PARTIAL OUTFITTING FLOOR PLAN

SCALE: 1/4" = 1'-0"



MARK	DESCRIPTION	MANUFACTURER (*)	MODEL OR SERIES (*)	NOTES
1	"L" WORKSTATION	KNOLL, INC.	SEE NOTES	2, 3
2	60" TRANSACTION COUNTER	KNOLL, INC.	MATCH WORKSTATION SYSTEM	
3	RECYCLING CONTAINERS	RUBBERMAID	FOR LEED PREREQUISITE	5
4	WARDROBE CABINET	KNOLL, INC.	RC733E(L/R)2MC	
5	"L" BOW FRONT WORKSTATION	KNOLL, INC.	RBSP6030JAR2MC	
6	DESK/PEDESTAL RETURN 48"	KNOLL, INC.	RRSP4824KAF2MC	
7	OVERHEAD CAB & SUPPORT	KNOLL, INC.	ROP0048S02/RWEA7220(L/R)2M	
8	"L" BOW FRONT WORKSTATION	KNOLL, INC.	RBSP7230JAR2MC	
9	LATERAL FILE -4 DRAWERS	KNOLL, INC.	C2F5136EZZZZ	
10	CABINET 36"x24"x72"	KNOLL, INC.	RC763G2WCL	
11	DOUBLE WIDE PEDESTAL	KNOLL, INC.	DS2W 30N w/ LAM TOP	
12	COPIER	XEROX	XEROX COLOR QUBE 9201	
13	DESK CHAIR -PRIVATE OFFICE	KNOLL, INC.	11-1-HA-2-S-X-HCDK-09-TSF	
14	FAX/COPIER MACHINE	SHARP	FO-4470	
15	EXPLOSION PROOF REFRIG	THERMO SCIENTIFIC	3557	8
16	WHITE MARKER BOARD 4'x 8'	ABC PORCELAIN MARKER BDS	#2H2NH	
17	RECTANGULAR TRAINING TABLE	KNOLL, INC.	P2-R24-C LAMINATE TOP	
18	PROJECTOR w/ CLG MOUNT	VIVITEK	D511 WITH CEILING MTD BRACKET	
19	RECESSED PROJECTION SCREEN	DA-LITE	EXECUTIVE ELECTROL 80516	6
20	LECTURN PODIUM	AvinED	PL-32 W/ WVS FINISH	4
21	SHREDDER	FELLOWS	PS-77Cs	
22	ROTARY FILE-LEGAL 7 TIER	SMEAD	#07550	
23	WHITE MARKER BOARD CABINET	DRYERASEBOARD	#842C	
24	SMALL SOFA	EXISTING		1
25	30"x60" DESK	EXISTING		1
26	DESK CHAIR	EXISTING		1
27	CREDENZA W/ SHELF	EXISTING		1
28	2 DRAWER FILE CABINET	EXISTING		1
29	PRINTER (& STAND)	EXISTING		1
30	SHREDDER	EXISTING		1
31	GUEST CHAIR	EXISTING		1
32	5 DRAWER FILE CABINET	EXISTING		1
33	LEKTRIEVERS	EXISTING		1
34	COPIER	EXISTING		1
35	PEDESTAL&TOP 23"x36"x28(H)"	KNOLL, INC.	RP262KLM114/RSA362	
36	SHELVING -MTL-18x36x72	GLOBAL	WB236702	
37	46" LCD-LED TV & MOUNT	SAMSUNG	Model#: UN46D6300S	7
38	CONFERENCE CHAIR	KNOLL, INC.	2-S-A-N-X-HC-C-RD	
39	GUEST CHAIR	KNOLL, INC.	9-A-SL-S-C-CH	
40	CREDENZA	EXISTING		1
41	PRINTER/FAX/COPIER	EXISTING		
42	REFRIG -MICROWAVE BUNDLE	AVANTI	REFMICBUNB	
43	LATERAL FILE -2 DRAWERS	KNOLL, INC.	C2F2736CZZ	
44	REFRIG - FREEZER 14.8CF	KENMORE	#7272 WHITE	
45	ARMLESS STACKING CHAIR	KNOLL	87C-012	
46	ICE MAKER W/ STOR BIN	MARVEL	30IM-BS-F OR 30IM-SS	
47	MICROWAVE	GE	PEB1590SMSS	

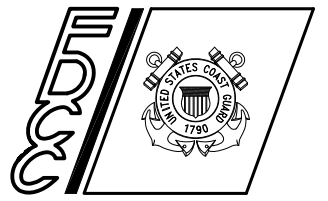
SCHEDULE NOTES:

- (*) MANUFACTURERS NAMES & MODEL NUMBERS ARE GIVEN TO ESTABLISH A LEVEL OF PERFORMANCE, QUALITY & CONSTRUCTION CHARACTERISTICS. ANY SUBSTITUTION FOR A BRAND NAME ITEM SHALL BE EQUAL IN PERFORMANCE, QUALITY AND CONSTRUCTION, & APPROVED BY THE CONTRACTING OFFICER.
 - (**) PROVIDE CAT 5e DATA CABLES & AC POWER STRIPS FOR ALL OFFICE WORKSTATIONS LOCATED AGAINST THE WALL.
- EXISTING RELOCATED BY CONTRACTOR FROM EXISTING THRU HALL OR BLDG. 78.
 - PROVIDE KNOLL CHAIR CHADWICK 33-AA-1-BK-B-S-X-HC W/ EACH "L" WORKSTATION.
 - PROVIDE KNOLL "L" WORKSTATION CONSISTING OF DIVIDEND HORIZON 64" H BELTWAY PANEL SYSTEM W/ ACOUSTIC INSERTS. PROVIDE DIVIDEND WORK SURFACES & COMPONENTS: 36"x24" RETURN, 48"x24" RETURN W/ 2 DRAWER FILE CABINET, 36" CORNER WORKSURFACE, 36"x12" & 48"x12" FLIPPER DOOR OVERHEAD UNITS.
 - IN SPACE 13, PROVIDE 4" SQ J-BOX & COVER PLATE IN WALL BEHIND THE PODIUM, & CONCEALED 2" CONDUIT CONNECTION FROM J-BOX TO CEILING MOUNTED PROJECTOR. PROVIDE AS A MINIMUM CONTAINERS FOR PAPER, PLASTIC & GLASS.
 - PROVIDE 54" X 72" MINIMUM PROJECTION SCREEN. MOTORIZED WITH RECESSED WALL MOUNTED CONTROLS. SCREEN SHALL BE MATTE WHITE.
 - PROVIDE TILTING WALL MOUNT WITH SHELF FOR CABLE TUNER BOX & DVD PLAYER EXPLOSION-PROOF REFRIGERATOR: UNITS SHALL PREVENT THE TRIGGERING OF VAPOR EXPLOSIONS INSIDE OR OUTSIDE THE UNIT IN CLASS I, GROUP C OR D HAZARDOUS MATERIAL ENVIRONMENTS. IT SHALL CONSIST OF RIGID STEEL FRAMES, DURABLE ENAMEL EXTERIORS, WHITE ABS PLASTIC INTERIORS, AND MANUAL DEFROST; MEET ALL APPLICABLE NFPA, OSHA AND UL STANDARDS. UNIT SHALL BE HARD WIRED PER LOCAL CODE TO 120 V, 60 HZ (240 V, 50 HZ ALSO AVAILABLE). CAPACITY 5.6 CU. FT., WITH A TEMPERATURE RANGE OF 2 TO 70C. REFRIGERATOR SHALL HAVE SPECIAL CORROSION-RESISTANT CONSTRUCTION FOR USE WITH CAUSTICS OR ACIDS; CONDENSING COILS, EVAPORATORS, 3 SHELVES, AND ALL STAINLESS STEEL DOOR LINER WITH AN ENAMELED INTERIOR. INSIDE DIMENSIONS: 19 X 27 1/2 X 13 MINIMUM; EXTERIOR DIMENSIONS 23 1/2 X 35 1/2 X 28 MINIMUM MODEL: 3557 BY THERMO SCIENTIFIC WAS USED AS A BASIS FOR DESIGN.



CONSULTANTS
D/B RFP DOCS
OCT 2011

U. S. COAST GUARD FACILITIES DESIGN & CONSTRUCTION CENTER



5505 ROBIN HOOD ROAD SUITE K
NORFOLK, VIRGINIA 23513-2431

MARK	DATE	DESCRIPTION

A/E PROJECT NO:
CAD FILE NAME: A3236488670102.dwg
DESIGNED BY:
DRAWN BY:
EDITED BY:
CHECKED BY:

SCALE: PLOT SCALE: 1 : 1

CONSTRUCT NEW ESD/CIVPERS BUILDING USCG BASE
ELIZABETH CITY NC
BUILDING #62
ARCHITECTURE
OUTFITTING PLAN & SCHEDULE

REVIEWED BY:	REVIEWED BY:	REVIEWED BY:
PROJECT ENG.	BRANCH CHIEF	TECH. DIRECTOR

APPROVING OFFICER _____ DATE _____

PROJECT NUMBER: **32-3648867** DRAWING NUMBER: **A3236488670102**

DISCIPLINE/SHT NO: **0102** SHEET **11** OF **11**