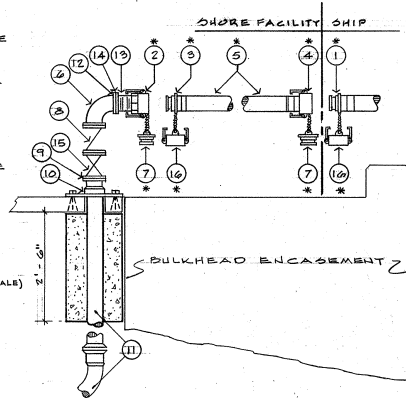
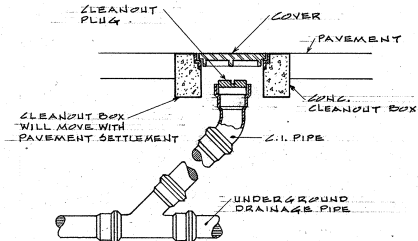


- \* ① - 4" BRONZE CAM-LOCKING QUICK-COUPLER, MALE HALF, INTERNALLY THREADED (N.P.T.)
- \* ② - 4" BRONZE CAM-LOCKING QUICK-COUPLER, FEMALE HALF, INTERNALLY THREADED (N.P.T.)
- \* ③ - 4" BRONZE CAM-LOCKING QUICK-COUPLER, MALE HALF WITH HOSE SHANK END
- \* ④ - 4" BRONZE CAM-LOCKING QUICK-COUPLER, FEMALE HALF WITH HOSE SHANK END AND SAFETY LOCK-ON HANDLES
- \* ⑤ - 4" HOSE TO BE BANDO TO QUICK-COUPLER SHANK ENDS - AS PER MIL-SPEC MIL-H-20176D
- ⑥ - 4" SHORT RADIUS, C.I., FLANGED 90° ELBOW
- \* ⑦ - 4" BRONZE CAM-LOCKING QUICK-COUPLER DUST PLUG (MALE)
- ⑧ - 4" C.I. CHECK VALVE, BALL FLOAT TYPE
- ⑨ - 4" SLIP-ON WELDED FLANGE (150#)
- ⑩ - SUPPORT ASSEMBLY
- ⑪ - 4" DRAIN PIPE
- ⑫ - 4" BRONZE SCREWED FLANGE (CLASS 125)
- ⑬ - 4" BRONZE CLOSE NIPPLE (N.P.T.)
- ⑭ - PVC GASKET (DIELECTRIC UNION)
- ⑮ - 4" FERROUS IRON GATE VALVE, NON-RISING STEM - CLASS 125
- \* ⑯ - 4" BRONZE CAM-LOCKING QUICK-COUPLER DUST COVER (FEMALE) WITH SAFETY LOCK-ON HANDLES

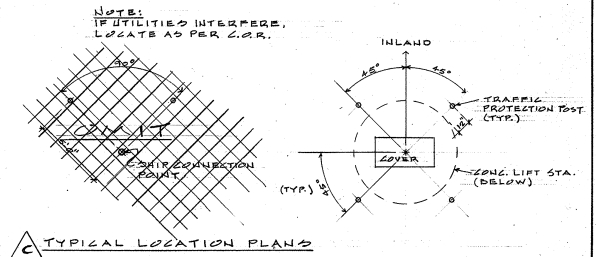
NOTE: \* DENOTES ITEMS THAT WILL BE GOVERNMENT FURNISHED.



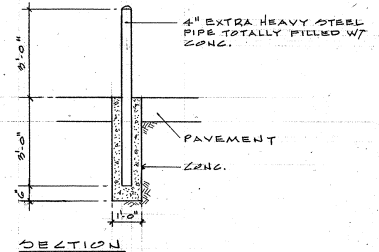
TYPICAL SHIP/SHORE SEWAGE CONNECTION DETAIL  
NO SCALE



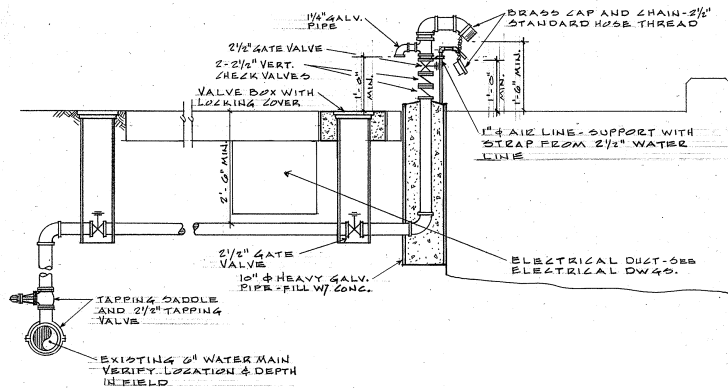
PAVED AREA CLEANOUT DETAIL  
NO SCALE



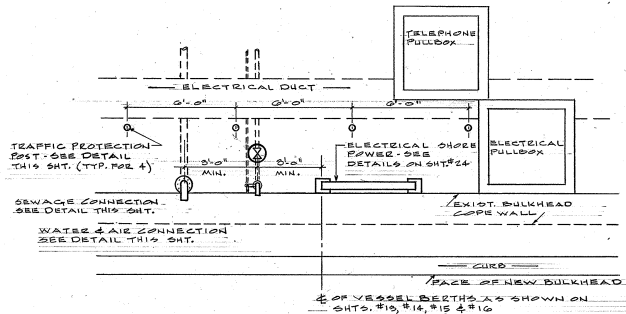
TYPICAL LOCATION PLANS



TRAFFIC PROTECTION POST DETAILS  
NO SCALE

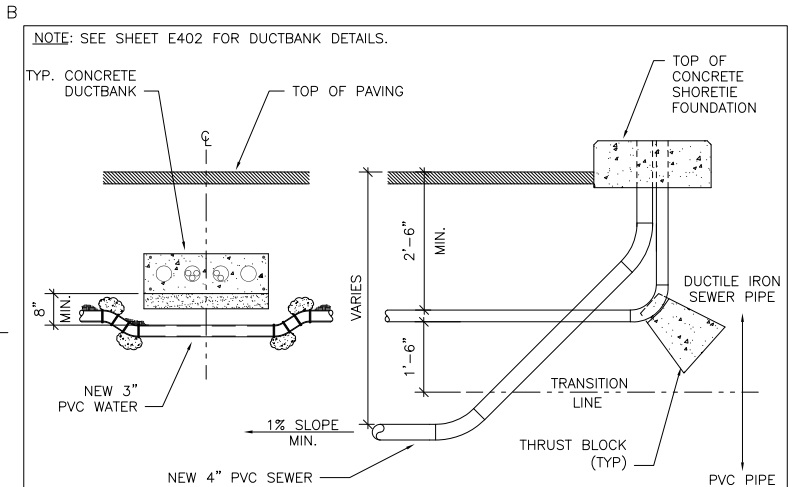
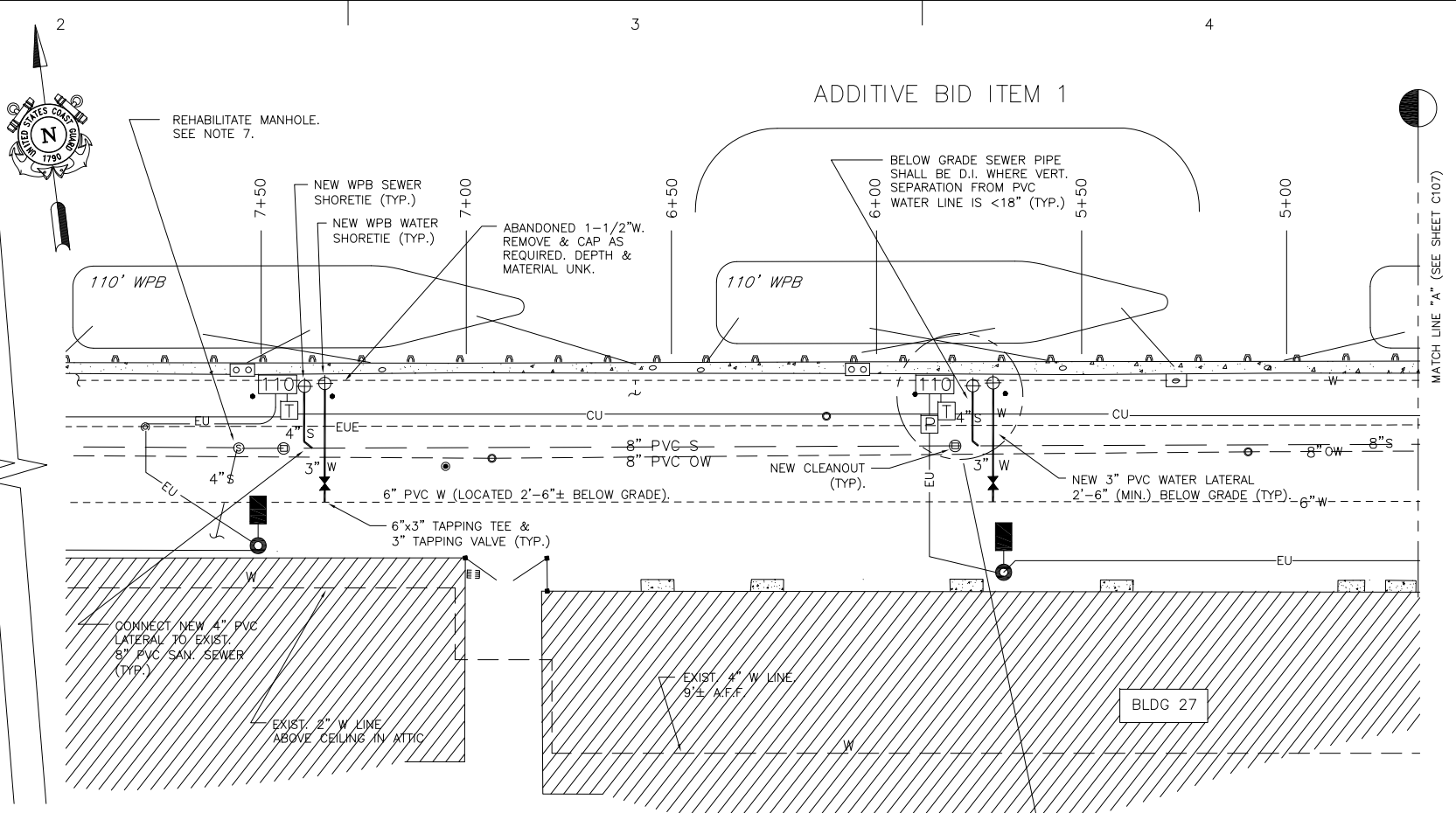
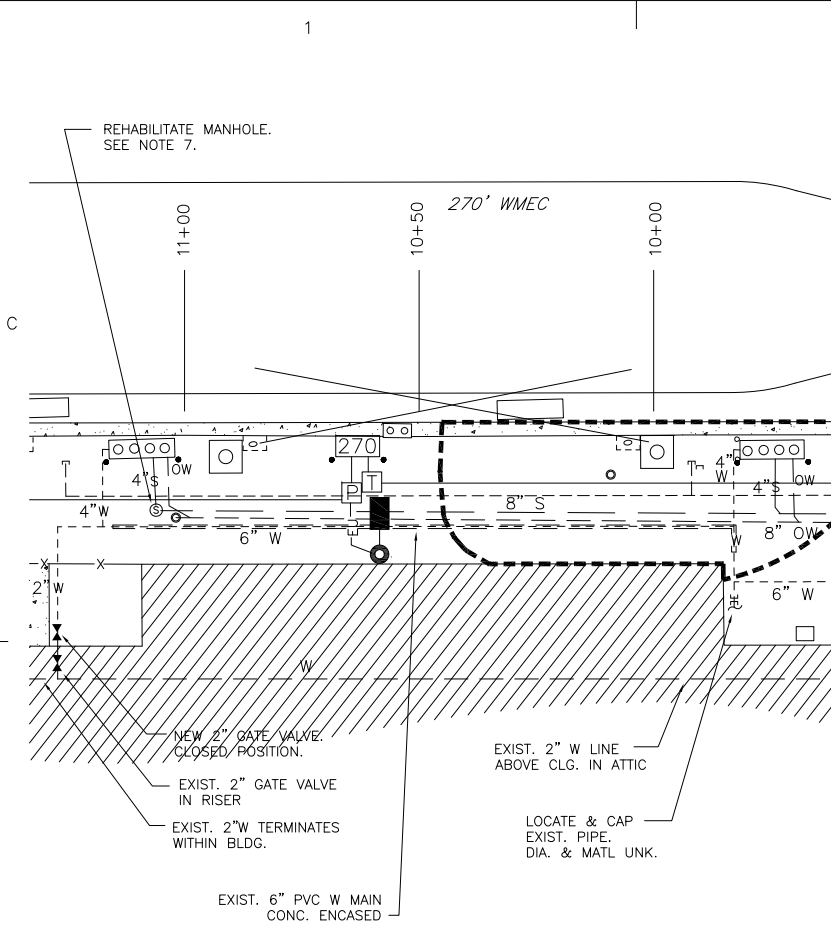


TYPICAL SHIP/SHORE POTABLE WATER CONNECTION DETAIL  
NO SCALE

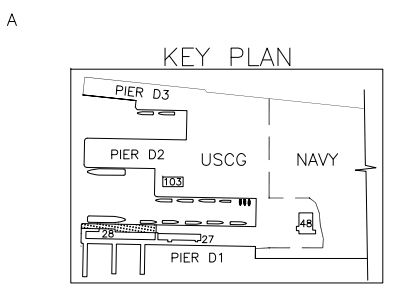


TYPICAL UTILITIES LAYOUT PLAN  
NOT TO SCALE

7-19-87	AS BUILT	AGG
REVISION	DATE	APPD.
U. S. COAST GUARD	SEVENTH DISTRICT	MIAMI, FLORIDA
<b>CIVIL ENGINEERING</b>		
DESIGNED - L. D. O.	DRAWN - D. E. C.	
DATE - 9, APR. 85	CHECKED -	
U. S. COAST GUARD BASE MIAMI BEACH, FLORIDA		
<b>PLUMBING DETAILS</b>		
PROJECT ENGINEER	APPROVED	CDR U.S.C.G. CHIEF OF BRANCH
C. G. DRAWING NO.		
3405		
SCALE NONE SHEET 12 OF 24		
FILE NO. 4976		



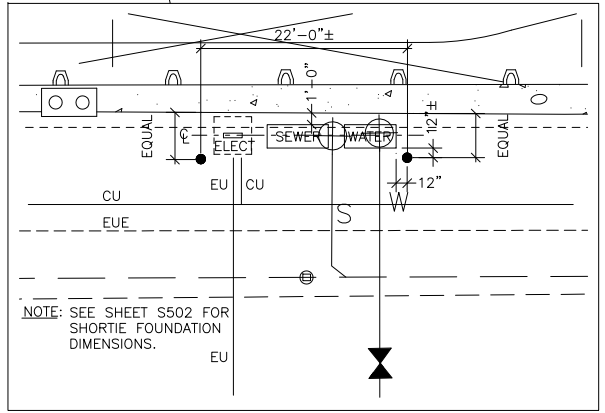
SEWER & WATER LATERALS  
DETAIL  
SCALE: 1/2" = 1'-0"



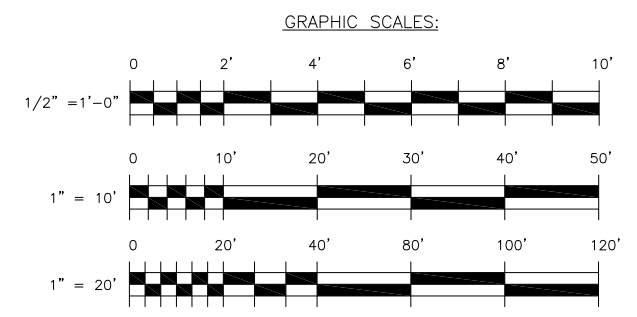
PARTIAL WATER/SEWER PLAN  
SCALE: 1" = 20'-0"

GENERAL NOTES:

- EXISTING 8"Ø SEWER MAIN AND 4"Ø LATERALS ON PIER D1 ARE PVC.
- EXISTING 6"Ø PVC WATER MAIN ALONG PIER D1 IS LOCATED APPROXIMATELY 2'-6" BELOW GRADE. EXISTING 6"Ø PVC WATER MAIN ALONG TRUMBO ROAD IS LOCATED APPROXIMATELY 3'-0" BELOW GRADE.
- INVERT ELEVATIONS OF EXISTING 8"Ø PVC OILY WASTE LINE ARE 12"± BELOW THOSE OF THE ADJACENT SEWER MAIN.
- INSTALL NEW WATER LATERALS 2'-6" (MIN.) BELOW FINAL GRADE. WHERE LATERALS CROSS NEW COMMUNICATION DUCTBANK, ROUTE WATER LINE 8" (MIN.) BELOW BOTTOM ELEV. OF CONCRETE DUCTBANK.
- SEE SECTIONS 02510 "WATER DISTRIBUTION" AND 02530 "SANITARY SEWERAGE" FOR PIPE REQUIREMENTS IN VICINITY OF SEWER AND WATER LINES, RESPECTIVELY.
- SHORETIE REQUIREMENTS FOR 110' PATROL BOATS ARE AS FOLLOWS (INFORMATION ONLY):
  - A. POTABLE WATER: 1500 GAL/DAY. SHORESIDE POTABLE WATER SHOULD NOT EXCEED 55 PSI.
  - B. SEWAGE: 1500 GAL/DAY. PUMPING RATE IS 25 GPM AT 13 FEET OF HEAD.
- MANHOLE REHABILITATION: REMOVE EXISTING LINER AND INSTALL NEW CEMENTITIOUS LINER IN ACCORDANCE WITH SPECIFICATION SECTION 02530 "SANITARY SEWERAGE" AND MANUFACTURER'S INSTRUCTIONS. DO NOT APPLY LINER UNTIL CLEANED/PREPARED SUBSTRATE IS INSPECTED AND APPROVED BY THE GOVERNMENT INSPECTOR (COR). SEE DETAIL ON SHEET C502.



TYPICAL WPB UTILITY STATION  
PLAN VIEW  
SCALE: 1" = 10'-0"



CONSULTANTS

U. S. COAST GUARD  
FACILITIES DESIGN & CONST  
CENTER ATLANTIC

FDCC LANT  
5505 ROBIN HOOD ROAD SUITE K  
NORFOLK, VIRGINIA 23513-2413

MARK	DATE	DESCRIPTION
1	12/23/03	AS-BUILT DRAWING

A/E PROJECT NO:  
CAD FILE NAME: A011C106.DWG  
DESIGNED BY: GXS  
DRAWN BY: GXS  
EDITED BY:  
CHECKED BY:

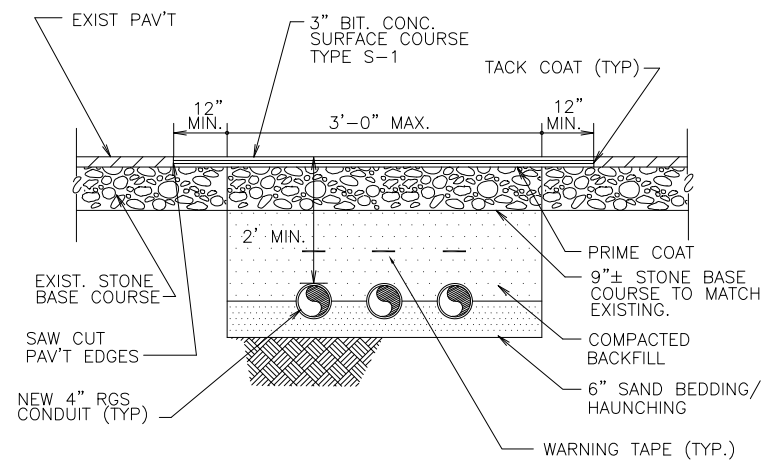
SCALE: AS SHOWN PLOT SCALE: 1:1

SHEET TITLE

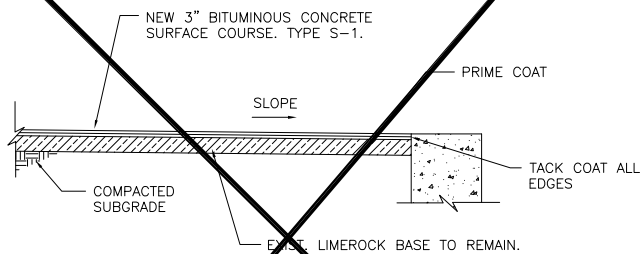
PIER D1 REHAB  
USCG GROUP KEY WEST  
KEY WEST FLORIDA  
PIER D1  
CIVIL  
WATER/SEWER PLAN 1

REVIEWED BY:	REVIEWED BY:	REVIEWED BY:
PROJECT ENG.	BRANCH CHIEF	CONTRACTING KO
APPROVING OFFICER		DATE

PROJECT NUMBER	DRAWING NUMBER
07-X3835	M0643-D
DISCIPLINE/SHT NO	SHEET 7 OF 28
C106	



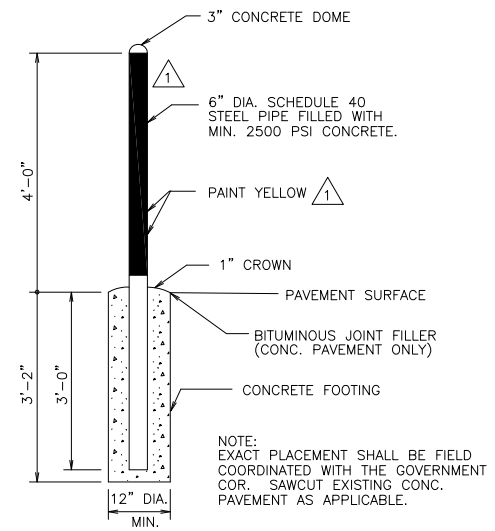
TRENCH DETAIL  
PAVED AREAS  
SCALE: N.T.S.



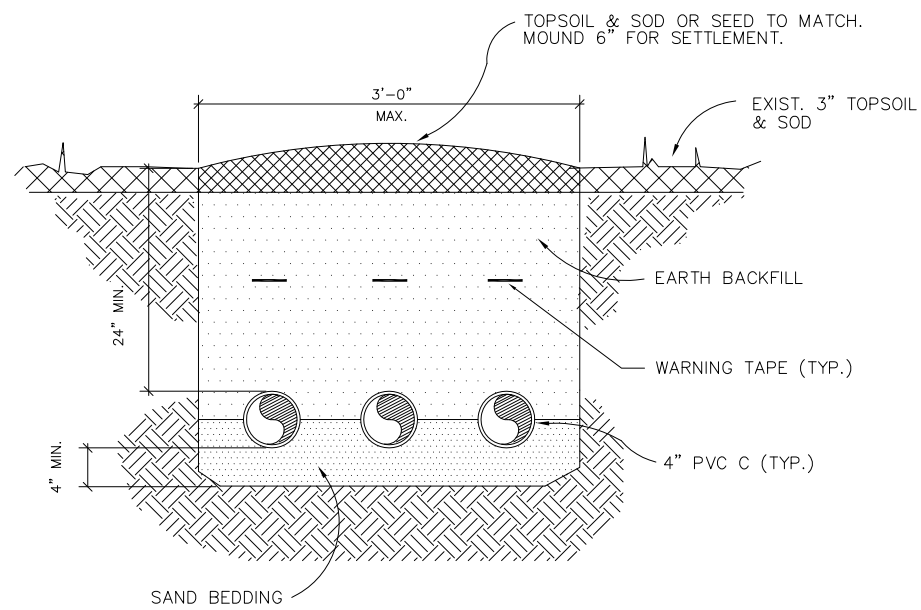
NOTE: SEE NOTE 4 ON SHEET C108.

NEW PIER PAVING  
(ADDITIVE BID ITEM #3)  
SCALE: N.T.S.

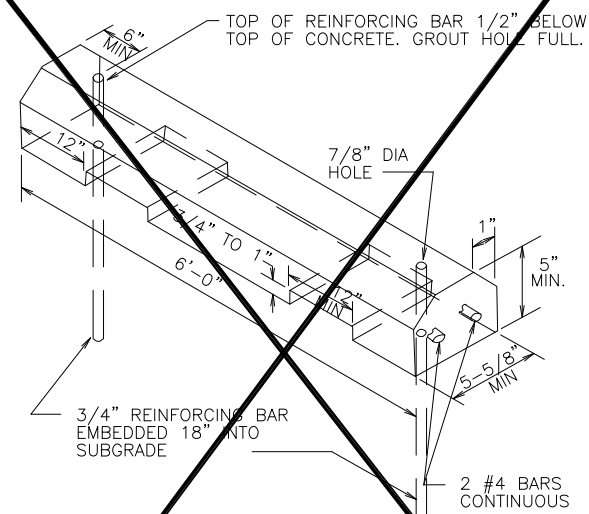
NOTE: PROVIDE NEW 9" LIMEROCK BASE WHERE EXISTING BASE IS REMOVED INCIDENTAL TO OTHER DEMOLITION/CONSTRUCTION ACTIVITIES. APPLICABLE FOR BASE BID AND ADDITIVE WORK.



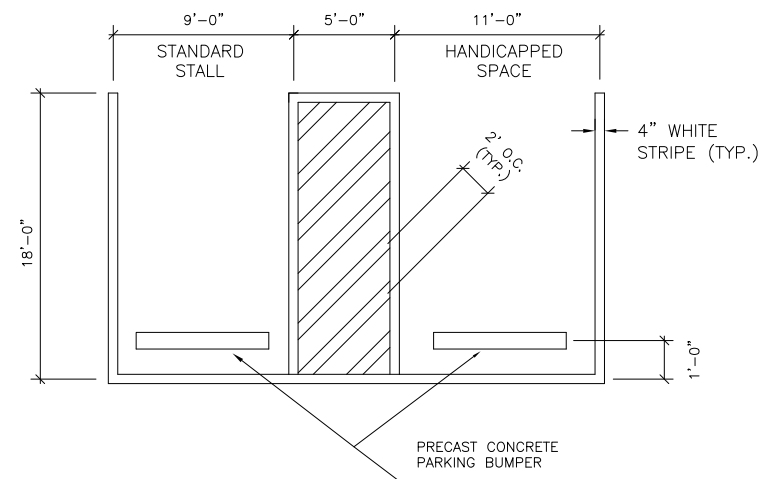
GUARD POST DETAIL  
SCALE: N.T.S.



TRENCH DETAIL  
UNPAVED AREAS  
SCALE: N.T.S.



PRECAST CONC. PARKING BUMPER  
(ADDITIVE BID ITEM #3)  
SCALE: N.T.S.



PAVEMENT MARKINGS  
(ADDITIVE BID ITEM #3)  
SCALE: N.T.S.

CONSULTANTS

U. S. COAST GUARD  
FACILITIES DESIGN & CONST  
CENTER ATLANTIC



FDCC LANT  
5505 ROBIN HOOD ROAD SUITE K  
NORFOLK, VIRGINIA 23513-2413

ISSUE  
12/22/03 AS-BUILT DRAWING

MARK	DATE	DESCRIPTION

A/E PROJECT NO:  
CAD FILE NAME: A011C501.DWG  
DESIGNED BY: GXS  
DRAWN BY: GXS  
EDITED BY:  
CHECKED BY:

SCALE: PLOT SCALE: 1:1

SHEET TITLE

PIER D1 REHAB  
USCG GROUP KEY WEST  
KEY WEST FLORIDA  
PIER D1  
CIVIL  
CIVIL DETAILS 1

REVIEWED BY: REVIEWED BY: REVIEWED BY:

PROJECT ENG. BRANCH CHIEF CONTRACTING KO

APPROVING OFFICER DATE

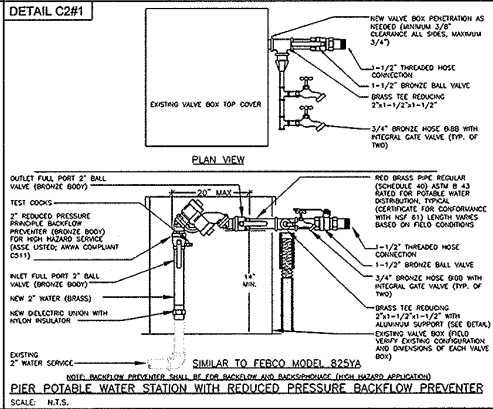
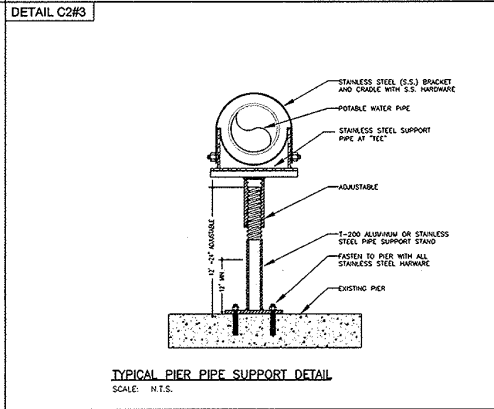
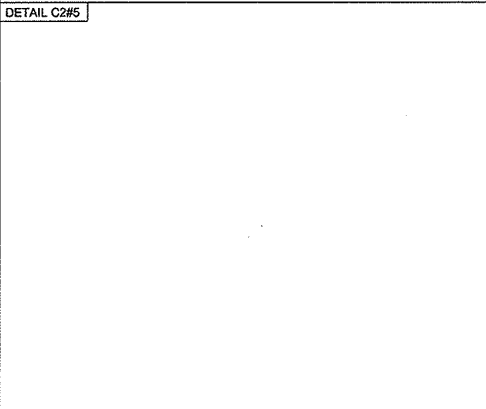
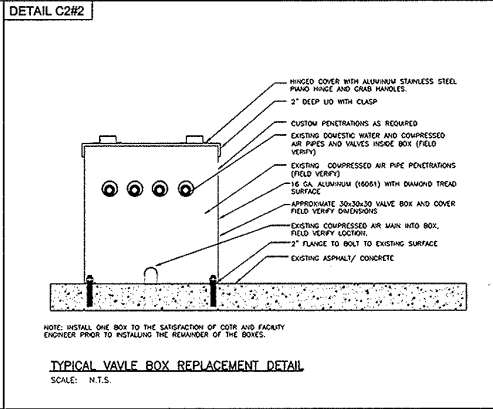
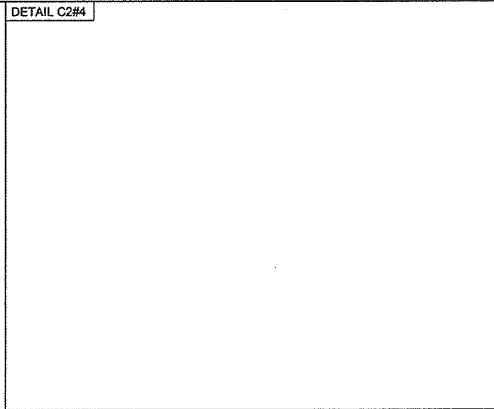
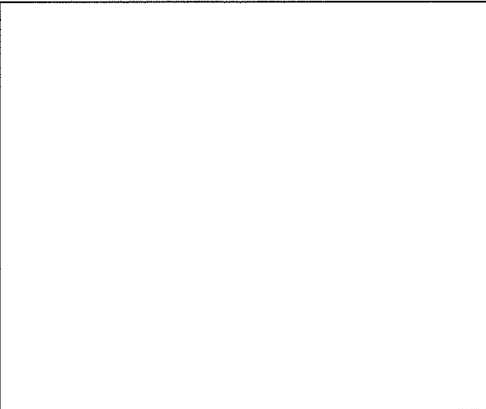
PROJECT NUMBER DRAWING NUMBER

07-X3835 M0643-D

DISCIPLINE/SHT NO SHEET 10 OF 28

C501

# FINAL DESIGN REVIEW



CONSULTANTS

U. S. COAST GUARD  
CIVIL ENGINEERING UNIT  
MIAMI



USCG. CEU MIAMI  
15608 SW 117TH AVE  
MIAMI, FL 33177

ISSUE		
NO.	DATE	DESCRIPTION
TW	08/20/08	85% 95% MOD
TW	06/01/06	95% MOD
TW	2/1/2008	85%
MARK	DATE	DESCRIPTION

A/E PROJECT NO:	
CAD FILE NAME:	M1193_C01.dwg
DESIGNED BY:	TW
DRAWN BY:	TW
EDITED BY:	TW
CHECKED BY:	TW
SCALE:	AS SHOWN PLOT SCALE: 1:1

**POTABLE WATER SERVICE**  
USCG ISC MIAMI  
MIAMI BEACH FLORIDA  
PIER SHORE TIES  
DETAILS  
CIVIL DOMESTIC WATER PLAN

REVIEWED BY:	REVIEWED BY:	DATE
PROJECT ENG.	BRANCH CHIEF	TECH. DIRECTOR

APPROVING OFFICER	DATE
-------------------	------

PROJECT NUMBER	DRAWING NUMBER
32-M02039	M1193-D

DISCIPLINE/SHT. NO.	SHEET	OF	3
C-2	3		