

U.S. COAST GUARD SECTOR SAN JUAN

FAST RESPONSE CUTTER (FRC) HOMEPORTING

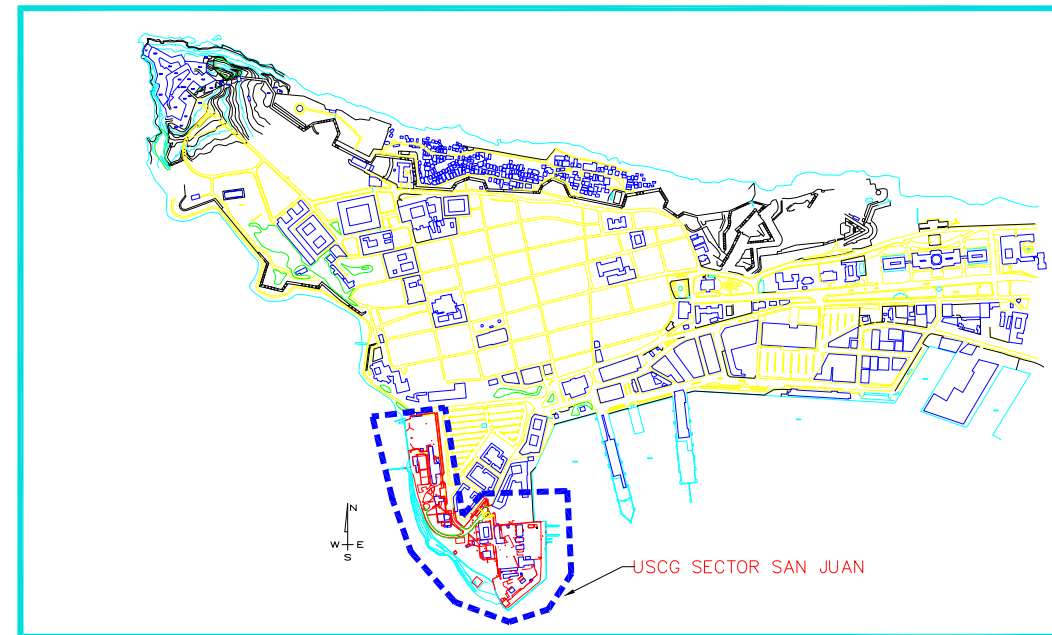
SAN JUAN, PUERTO RICO



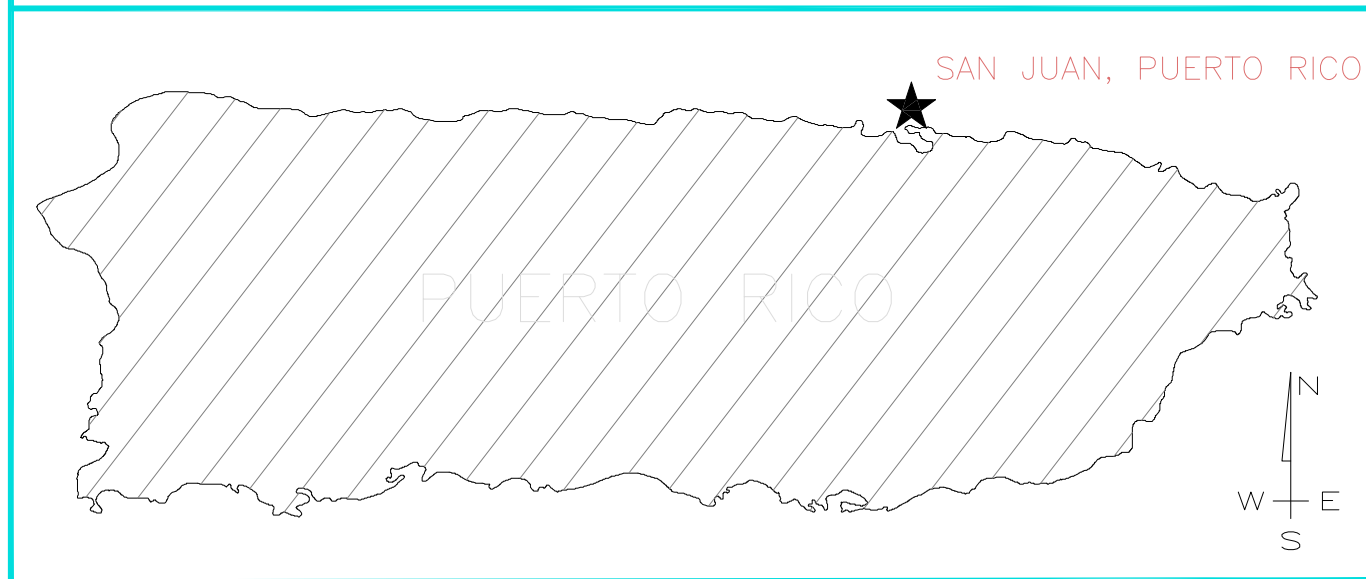
D/B RFP DRWG
05/13/2011



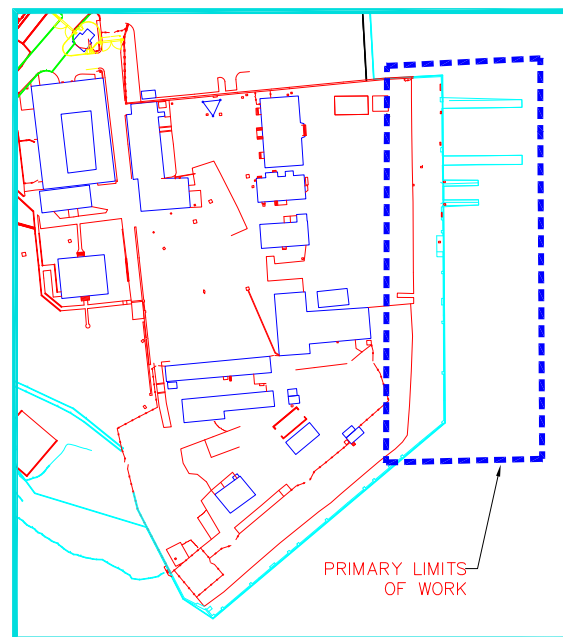
VICINITY MAP
SCALE: NOT TO SCALE



PROJECT LOCATION MAP
SCALE: NOT TO SCALE



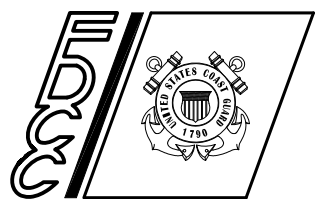
VICINITY MAP
SCALE: NOT TO SCALE



SITE LOCATION
SCALE: NOT TO SCALE

DRAWING INDEX	
SHEET	TITLE
GENERAL	
G-001	COVER SHEET
CIVIL	
C-001	OVERALL EXISTING CONDITIONS
C-002	PROJECT EXISTING CONDITIONS
C-101	DEMOLITION PLAN
C-102	CONCEPT SITE PLAN
ELECTRICAL	
E-101	CONCEPTUAL ONE LINE DIAGRAM
E-102	DIAGRAMS AND SUBSTATION PLAN
E-103	SHORE POWER ENCLOSURE

U. S. COAST GUARD
FACILITIES DESIGN &
CONSTRUCTION CENTER



5505 ROBIN HOOD ROAD SUITE K
NORFOLK, VIRGINIA 23513-2431

ISSUE		
MARK	DATE	DESCRIPTION

A/E PROJECT NO:
CAD FILE NAME: A073581208G001
DESIGNED BY:
DRAWN BY:
EDITED BY:
CHECKED BY:

SCALE: PLOT SCALE: 1 : 1

SHEET TITLE
**HOMEPORTING FRC CUTTERS
USCG SECTOR SAN JUAN
SAN JUAN PUERTO RICO**

GENERAL
COVER SHEET

REVIEWED BY: REVIEWED BY: REVIEWED BY:
PROJECT ENG. BRANCH CHIEF TECH. DIRECTOR

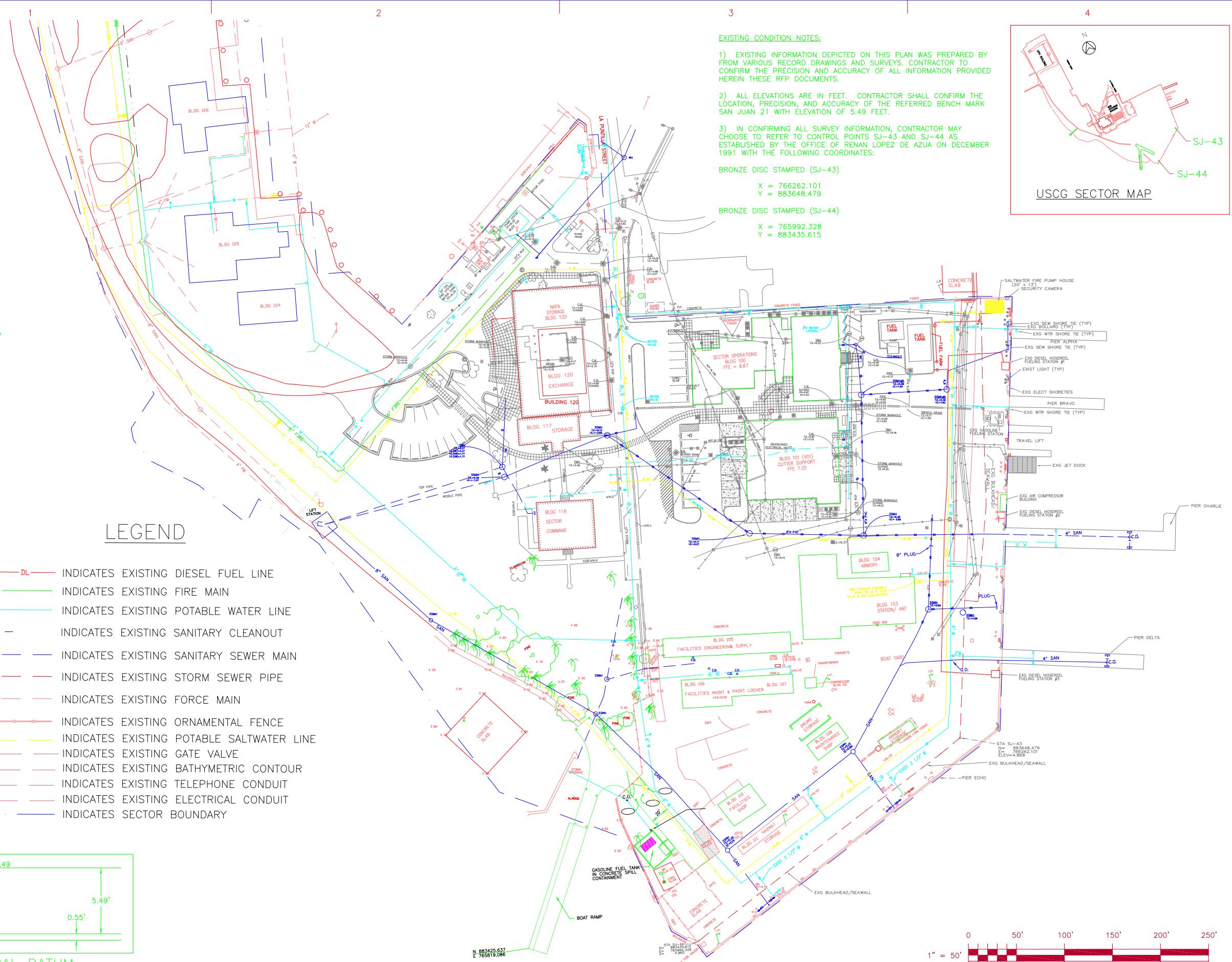
APPROVING OFFICER DATE

PROJECT NUMBER DRAWING NUMBER

A073581208A073581208G001

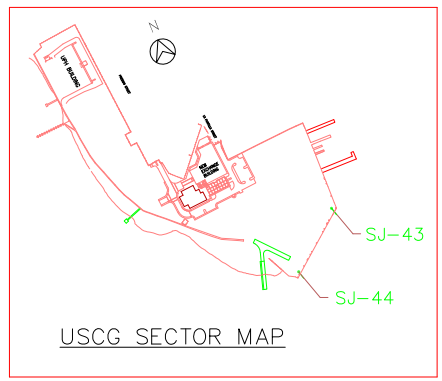
DISCIPLINE/SHT NO SHEET 1 OF 8
G001

E:\PIPING\PA_OVERSEAS\PA_07-3581208_FRC_WATERFRONT\RFP_DOCUMENTS\DRAWINGS\A073581208C001.DWG LAYOUT: C100 7/25/2011 3:22PM DIMSCALE: 20 R17.2



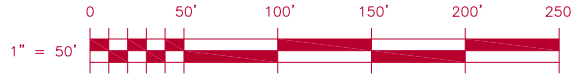
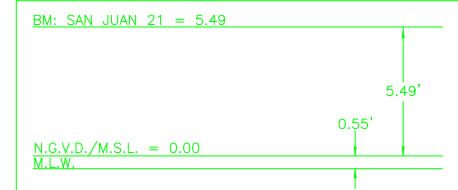
EXISTING CONDITION NOTES:

- EXISTING INFORMATION DEPICTED ON THIS PLAN WAS PREPARED BY FROM VARIOUS RECORD DRAWINGS AND SURVEYS. CONTRACTOR TO CONFIRM THE PRECISION AND ACCURACY OF ALL INFORMATION PROVIDED HEREIN THESE RFP DOCUMENTS.
- ALL ELEVATIONS ARE IN FEET. CONTRACTOR SHALL CONFIRM THE LOCATION, PRECISION, AND ACCURACY OF THE REFERRED BENCH MARK SAN JUAN 21 WITH ELEVATION OF 5.49 FEET.
- IN CONFIRMING ALL SURVEY INFORMATION, CONTRACTOR MAY CHOOSE TO REFER TO CONTROL POINTS SJ-43 AND SJ-44 AS ESTABLISHED BY THE OFFICE OF RENAN LOPEZ DE AZUA ON DECEMBER 1991 WITH THE FOLLOWING COORDINATES:
 BRONZE DISC STAMPED (SJ-43)
 X = 766262.101
 Y = 883648.479
 BRONZE DISC STAMPED (SJ-44)
 X = 765992.328
 Y = 883435.615



LEGEND

- DL — DL — DL — INDICATES EXISTING DIESEL FUEL LINE
- FIRE — INDICATES EXISTING FIRE MAIN
- W — INDICATES EXISTING POTABLE WATER LINE
- C.O. — — — INDICATES EXISTING SANITARY CLEANOUT
- SAN — — — INDICATES EXISTING SANITARY SEWER MAIN
- STM — — — INDICATES EXISTING STORM SEWER PIPE
- FM — — — INDICATES EXISTING FORCE MAIN
- ○ — ○ — INDICATES EXISTING ORNAMENTAL FENCE
- X — — — INDICATES EXISTING GATE VALVE
- 20 — — — INDICATES EXISTING BATHYMETRIC CONTOUR
- T — — — INDICATES EXISTING TELEPHONE CONDUIT
- SE — — — INDICATES EXISTING ELECTRICAL CONDUIT
- — — — INDICATES SECTOR BOUNDARY



CONSULTANTS

D/B RFP DRWG

05/13/2011

**U. S. COAST GUARD
FACILITIES DESIGN &
CONSTRUCTION CENTER**



5505 ROBIN HOOD ROAD SUITE K
NORFOLK, VIRGINIA 23513-2431

ISSUE		
MARK	DATE	DESCRIPTION

A/E PROJECT NO:
CAD FILE NAME: A073581208C001.dwg
DESIGNED BY:
DRAWN BY:
EDITED BY:
CHECKED BY:

SCALE: PLOT SCALE: 1 : 1

SHEET TITLE
HOMEPORTING FRC CUTTERS
USCG SECTOR SAN JUAN
SAN JUAN PUERTO RICO

**CIVIL
OVERALL EXISTING CONDITIONS**

REVIEWED BY: REVIEWED BY: REVIEWED BY:
PROJECT ENG. BRANCH CHIEF TECH. DIRECTOR

APPROVING OFFICER DATE

PROJECT NUMBER DRAWING NUMBER
A073581208 A073581208C001

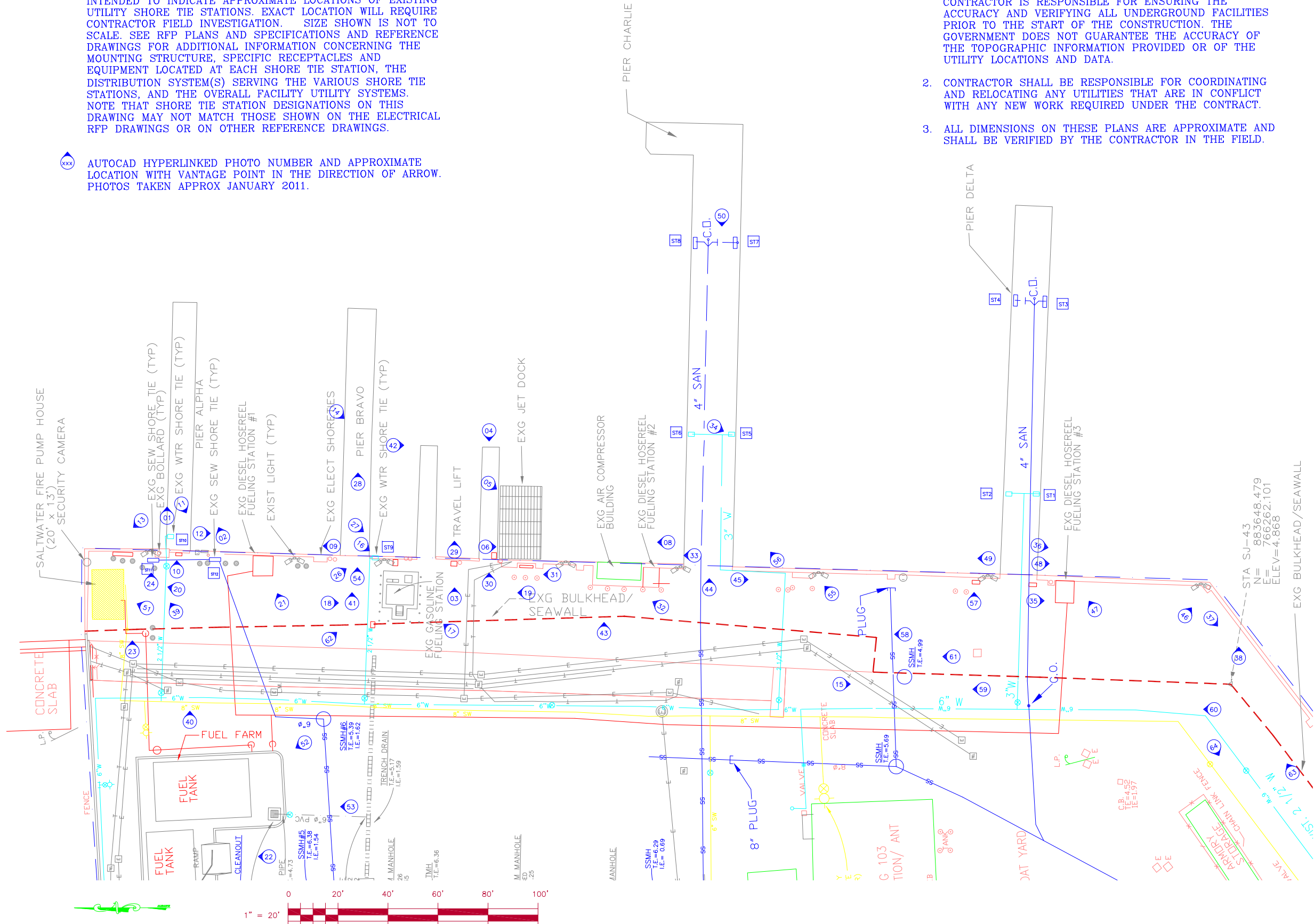
DISCIPLINE/SHT NO SHEET 2 OF 8
C001

xx EXISTING WATER AND/OR SEWER SHORE TIE. SEE EXISTING PHOTO DETAILS HYPERLINKED HEREIN. THIS DRAWING IS ONLY INTENDED TO INDICATE APPROXIMATE LOCATIONS OF EXISTING UTILITY SHORE TIE STATIONS. EXACT LOCATION WILL REQUIRE CONTRACTOR FIELD INVESTIGATION. SIZE SHOWN IS NOT TO SCALE. SEE RFP PLANS AND SPECIFICATIONS AND REFERENCE DRAWINGS FOR ADDITIONAL INFORMATION CONCERNING THE MOUNTING STRUCTURE, SPECIFIC RECEPTACLES AND EQUIPMENT LOCATED AT EACH SHORE TIE STATION, THE DISTRIBUTION SYSTEM(S) SERVING THE VARIOUS SHORE TIE STATIONS, AND THE OVERALL FACILITY UTILITY SYSTEMS. NOTE THAT SHORE TIE STATION DESIGNATIONS ON THIS DRAWING MAY NOT MATCH THOSE SHOWN ON THE ELECTRICAL RFP DRAWINGS OR ON OTHER REFERENCE DRAWINGS.

xxx AUTOCAD HYPERLINKED PHOTO NUMBER AND APPROXIMATE LOCATION WITH VANTAGE POINT IN THE DIRECTION OF ARROW. PHOTOS TAKEN APPROX JANUARY 2011.

GENERAL NOTES

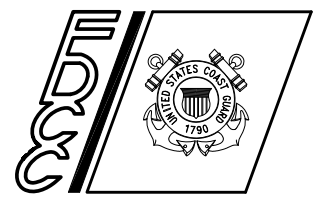
1. TOPOGRAPHIC DATA AND EXISTING UTILITIES SHOWN ARE BASED ON INFORMATION FROM ALL AVAILABLE RECORDS. CONTRACTOR IS RESPONSIBLE FOR ENSURING THE ACCURACY AND VERIFYING ALL UNDERGROUND FACILITIES PRIOR TO THE START OF THE CONSTRUCTION. THE GOVERNMENT DOES NOT GUARANTEE THE ACCURACY OF THE TOPOGRAPHIC INFORMATION PROVIDED OR OF THE UTILITY LOCATIONS AND DATA.
2. CONTRACTOR SHALL BE RESPONSIBLE FOR COORDINATING AND RELOCATING ANY UTILITIES THAT ARE IN CONFLICT WITH ANY NEW WORK REQUIRED UNDER THE CONTRACT.
3. ALL DIMENSIONS ON THESE PLANS ARE APPROXIMATE AND SHALL BE VERIFIED BY THE CONTRACTOR IN THE FIELD.



D/B RFP DRWG

05/13/2011

**U. S. COAST GUARD
FACILITIES DESIGN &
CONSTRUCTION CENTER**



5505 ROBIN HOOD ROAD SUITE K
NORFOLK, VIRGINIA 23513-2431

ISSUE		
MARK	DATE	DESCRIPTION

A/E PROJECT NO:
CAD FILE NAME: A073581208C002.dwg
DESIGNED BY:
DRAWN BY:
EDITED BY:
CHECKED BY:

SCALE: PLOT SCALE: 1 : 1

SHEET TITLE
**HOMEPORTING FRC CUTTERS
USCG SECTOR SAN JUAN
SAN JUAN PUERTO RICO**

**CIVIL
PROJECT EXISTING CONDITIONS**

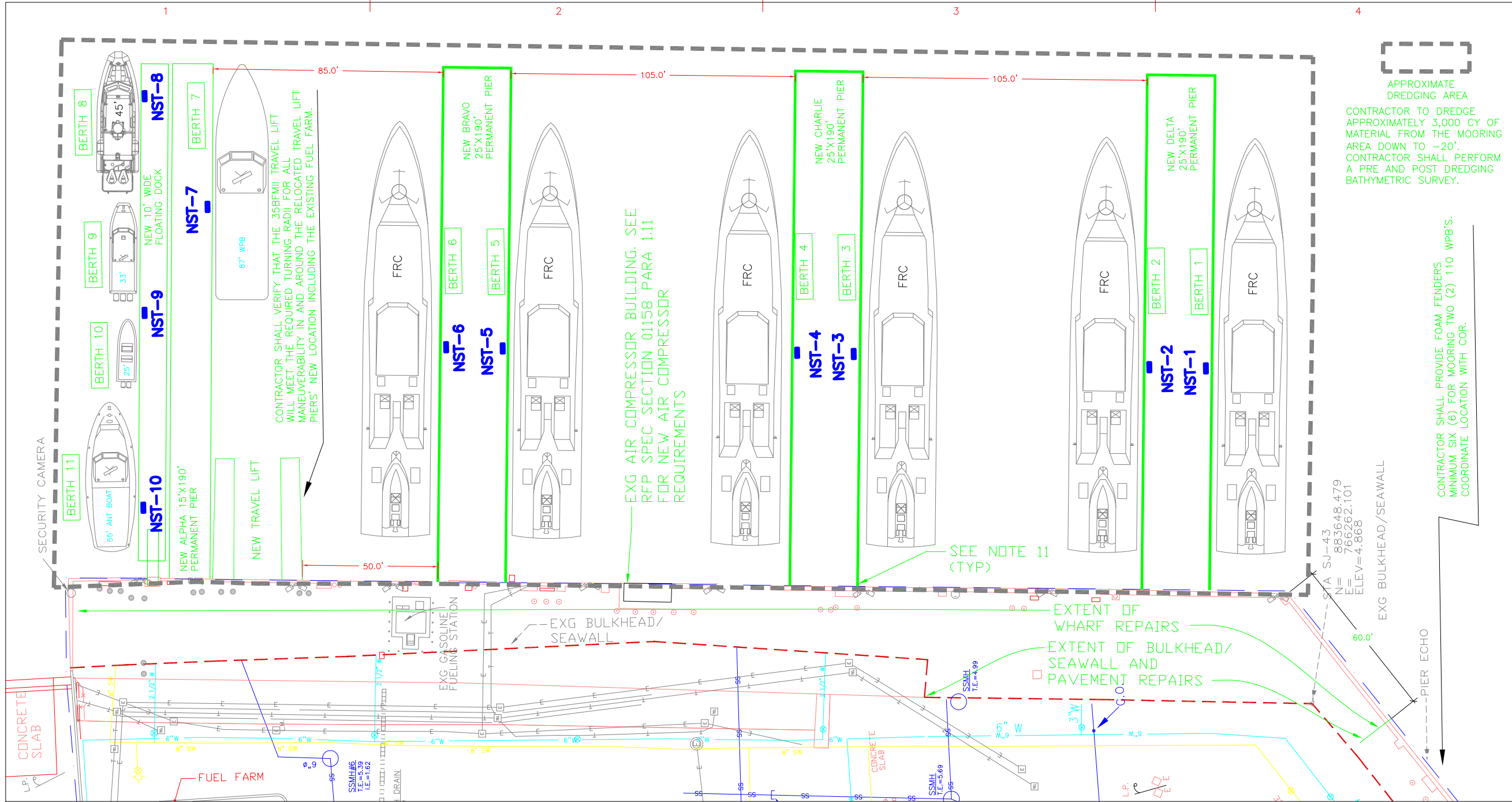
REVIEWED BY:	REVIEWED BY:	REVIEWED BY:
PROJECT ENG.	BRANCH CHIEF	TECH. DIRECTOR

APPROVING OFFICER	DATE
-------------------	------

PROJECT NUMBER	DRAWING NUMBER
A073581208	A073581208C002

DISCIPLINE/SHT NO	SHEET	OF
C002	3	8

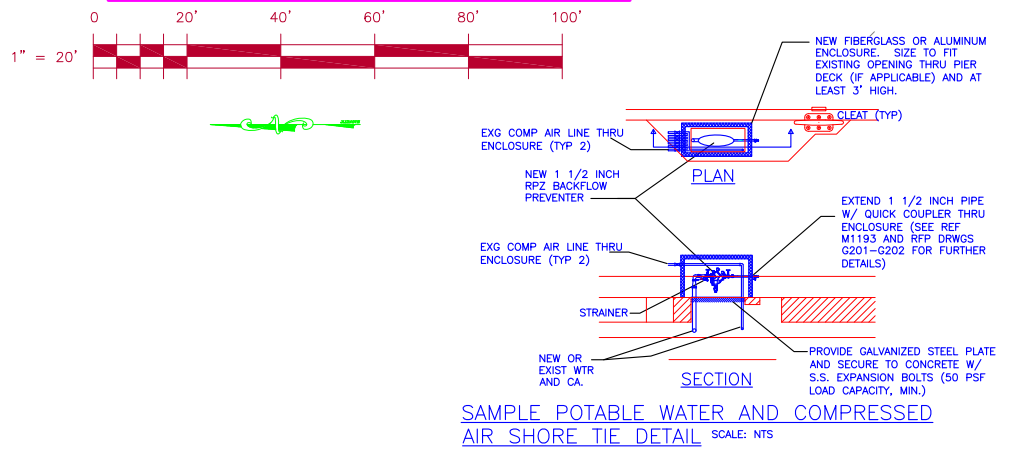
E:\PROJECTS\07-3581208 FRC HOMEPORTR\FRC WATERFRONT\RFP DOCUMENTS\DRAWINGS\A073581208C002.DWG LAYOUT: C002 7/25/2011 3:23PM DIMSCALE: 20 R17.2



GENERAL NOTES

- NEW SHORE TIE (NST) UTILITY SERVICES LOCATIONS SHOWN ARE APPROXIMATE AND ARE INTENDED TO PROVIDE GUIDANCE FOR DESIGN OF THE UTILITY SERVICES FOR THE NEW SHORE-TIES. PROVIDE UTILITIES IN ACCORDANCE WITH REQUIREMENTS OF THE RFP SPECIFICATIONS. CONTRACTOR SHALL ENSURE THAT ALL NEW SHORE TIES MEET THE REQUIREMENTS OF COMINST M6240.5 WATER SUPPLY AND WASTEWATER DISPOSAL MANUAL AND THAT A PROPER BACK FLOW PREVENTION DEVICE (BFPD) IS INSTALLED. NOTE THAT A CHECK VALVE IS NOT CONSIDERED A BFPD. SEE DETAIL THIS SHEET.
- THE RFP DRAWINGS ARE CONCEPTUAL AND ARE INTENDED FOR INFORMATIONAL PURPOSES ONLY. THIS DRAWING IS ONLY INTENDED TO SHOW APPROXIMATE LOCATIONS OF NEW PIER AND BERTHING LOCATIONS THAT ARE TO BE PROVIDED WITH UPGRADED UTILITY SHORE TIES AT THE COMPLETION OF CONSTRUCTION. THEY ARE NOT INTENDED TO REPRESENT A FINAL DESIGN SOLUTION. THE ABOVE SPACING DIMENSIONS BETWEEN PROPOSED PIERS ARE THE MINIMUM THAT SHALL BE ALLOWED. SEE RFP SPECIFICATIONS FOR ADDITIONAL INFORMATION REGARDING APPLICATION OF RFP DRAWINGS.
- PAVEMENT SLAB THAT NEEDS TO BE CUT TO FACILITATE INSTALLATION OF REQUIRED UTILITIES FOR THE NEW SHORE TIES SHALL BE REPLACED WITH 10 INCH THICK SLAB AFTER UTILITY INSTALLATION IS COMPLETED. CONTRACTOR IS RESPONSIBLE FOR RESTORING STRUCTURAL INTEGRITY BY PROVIDING SHEAR KEYS OR DOWELS SIMILAR TO ORIGINAL DESIGN AS SHOWN IN SPEC SECTION 0102 ON REFERENCED ATTACHMENT "S" DRAWING 3405 BULKHEAD REPAIRS SHEETS 10 OF 24.
- CONTRACTOR TO PROVIDE NEW DIESEL FUEL DISTRIBUTION SUPPLY AND RETURN LINES TO/FROM THE EXISTING FUEL FARM TO/FROM THREE NEW DIESEL FUEL DISPENSING UNITS TO BE LOCATED ALONG THE EDGE OF WHARF AT NEW PIERS ALPHA, BRAVO, AND CHARLIE.
- FOR BIDDING PURPOSES, CONTRACTOR SHALL MILL OUT 2" OF EXISTING ASPHALT 20' FROM BACK OF EXISTING BULKHEAD/SEAWALL ALONG PROJECT LIMITS AND REPLACE WITH A COMPACTED 2" HEAVY TRAFFICKED QUALITY ASPHALT OVERLAY.
- CONTRACTOR SHALL ENSURE THAT EXISTING WATER SUPPLY SYSTEM PROVIDES ALL REQUIRED PRESSURE AND FLOWS TO ALL NEW WATER SHORE TIES (SEE RFP SECTION 00101, REFERENCE DOCUMENTS ATTACHMENT "R" FOR FURTHER INFORMATION). ANY DEFICIENCIES FOUND SHALL BE BROUGHT TO THE CONTRACTING OFFICER'S ATTENTION IMMEDIATELY.
- CONTRACTOR SHALL ENSURE THAT EXISTING SANITARY SEWER SYSTEM IS SIZED PROPERLY FOR MEETING MINIMUM VELOCITY AND QUANTITY REQUIREMENTS FOR THE NEW WASTEWATER FLOWS FROM THE NEW SHORE TIE SYSTEM. ANY DEFICIENCIES FOUND SHALL BE BROUGHT TO THE CONTRACTING OFFICER'S ATTENTION IMMEDIATELY.
- WORK IS REQUIRED TO BE SEQUENCED TO MINIMIZE IMPACT ON SECTOR SAN JUAN WATERFRONT OPERATIONS; SEE RFP SPECIFICATION 01110 FOR REQUIREMENTS.
- REFER TO RFP SPECIFICATIONS AND DRAWINGS FOR NEW ELECTRICAL AND TELECOMMUNICATIONS SYSTEMS REQUIREMENTS.
- NEW PERMANENT PIER DECK ELEVATIONS SHALL MATCH EXISTING WHARF DECK AT POINTS OF LOCATIONS WITH THE WHARF. LENGTH OF NEW FLOATING PIER SHALL EXTEND OUT TO MATCH PERMANENT PIERS. ACCESS TO FLOATING PIER SHALL BE FROM THE WHARF ON AN 4-FT WIDE GANGWAY.
- PROVIDE NEW UTILITIES NECESSARY FOR PIER OPERATIONS.

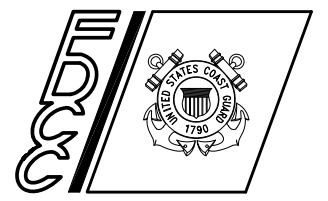
PROPOSED MOORING PLAN



CONSULTANTS

D/B RFP DRWG
05/13/2011

**U. S. COAST GUARD
FACILITIES DESIGN &
CONSTRUCTION CENTER**



5505 ROBIN HOOD ROAD SUITE K
NORFOLK, VIRGINIA 23513-2431

MARK	DATE	DESCRIPTION

A/E PROJECT NO:
CAD FILE NAME: A073581208C102.dwg
DESIGNED BY:
DRAWN BY:
EDITED BY:
CHECKED BY:

SCALE: PLOT SCALE: 1 : 1

SHEET TITLE
HOMEPORTING FRC CUTTERS
USCG SECTOR SAN JUAN
SAN JUAN PUERTO RICO

**CIVIL
CONCEPT SITE PLAN**

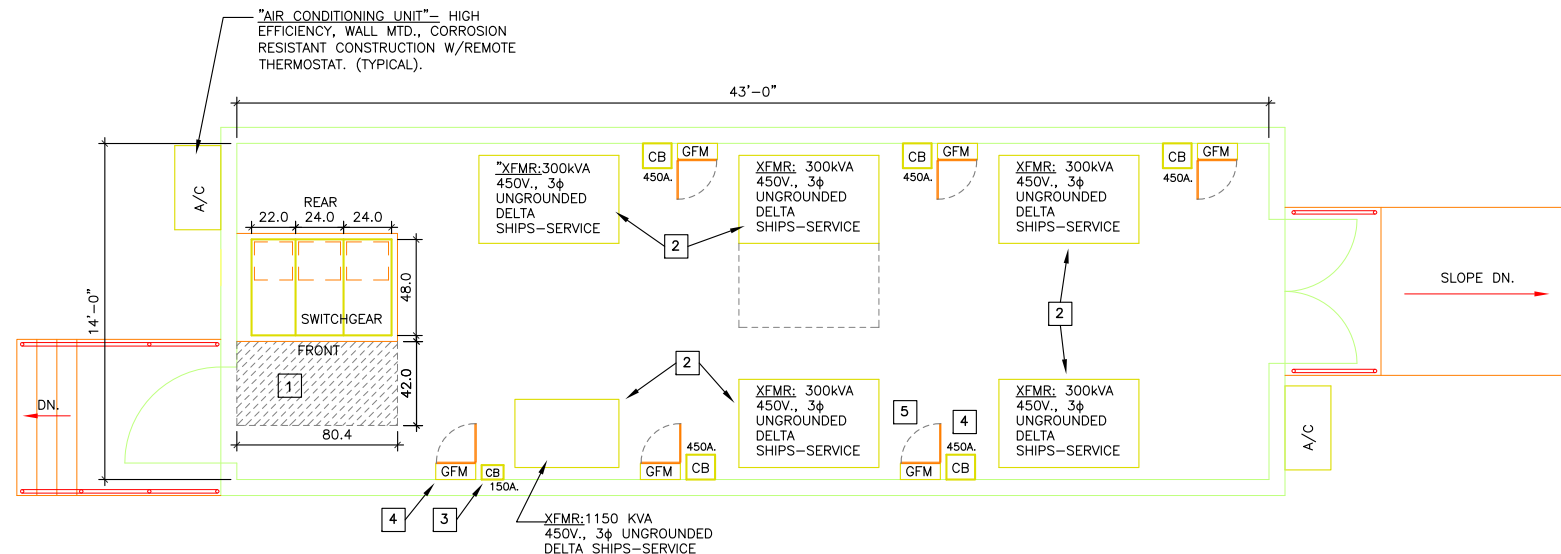
REVIEWED BY: REVIEWED BY: REVIEWED BY:
PROJECT ENG. BRANCH CHIEF TECH. DIRECTOR

APPROVING OFFICER DATE

PROJECT NUMBER DRAWING NUMBER
A073581208 A073581208C102

DISCIPLINE/SHT NO SHEET 5 OF 8
C102

E:\P\PROJECTS\07-3581208 FRC HOMEPORTRFP WATERFRONT\FRC DOCUMENTS\DRAWINGS\A073581208C102.DWG LAYOUT: C102 7/25/2011 3:25PM DIMSCALE: 20 R17.2



ELECTRICAL EQUIPMENT SHELTER GENERAL PLAN NOTES:

- 1 PROVIDE NEC 110.26 WORKING SPACES IN FRONT OF ALL ELECTRICAL EQUIPMENT. EQUIPMENT ARRANGEMENT AND DIMENSIONS SHOWN ARE FOR ILLUSTRATIVE PURPOSES. PROVIDE ELECTRICAL RATED SAFETY MAT IN FRONT OF ALL SWITCHBOARDS.
- 2 TYPICAL "SHIPS-SERVICE" VOLTAGE ISOLATION TRANSFORMERS WITH PRIMARY TAP ROTARY SELECTOR SWITCH MTD. ON THE FRONT OF THE ENCLOSURE.
- 3 "TYPICAL" SHIPS-SERVICE TRANSFORMER SECONDARY PROTECTION MOLDED CASE CIRCUIT BREAKER, WITH ELECTRONIC TRIP, NEMA-1 OVERSIZED ENCLOSURE WITH PHASE LOSS RELAY, SHUNT TRIP AND AUXILIARY CONTACTS.
- 4 "TYPICAL" SHIPS-SERVICE SECONDARY GROUND FAULT MONITORING SYSTEM (GFM), WALL MTD. NEMA-1 HINGED COVER ENCLOSURE.
- 5 SEE RFP SPECIFICATIONS FOR SUBSTATION CONSTRUCTION REQUIREMENTS.

EXAMPLE EQUIPMENT SHELTER FLOOR PLAN

SCALE: 1/4"=1'-0"

THIS PLAN IS NOT INTENDED TO SHOW THE SPECIFIC REQUIREMENTS FOR THIS PROJECT BUT TO SHOW AN EXAMPLE OF A EQUIPMENT SHELTER AND EQUIPMENT LAYOUT FOR A SIMILAR PROJECT FOR DESIGN GUIDANCE.

CAUTION
SHIP SERVICE USE ONLY
450VOLTS, 3 PHASE, 3W+G
UNGROUNDED DELTA

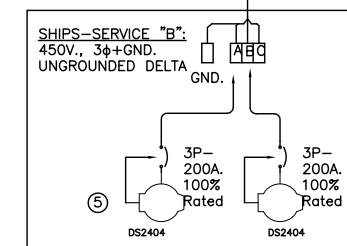
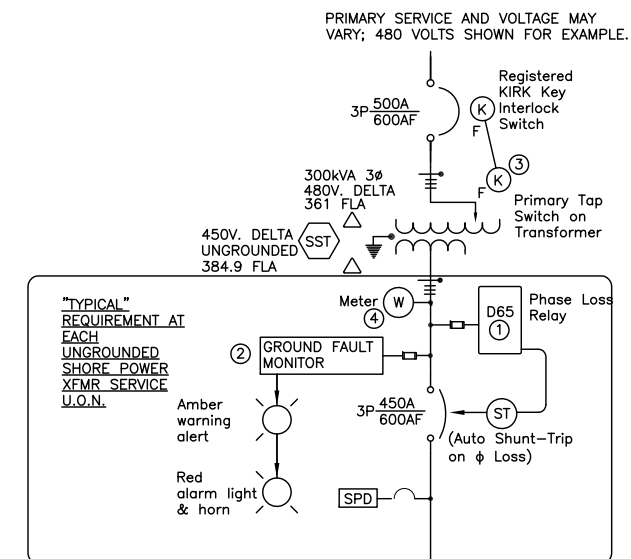
ID TAG DETAIL
N.T.S.

NOTES:

ALL "UNGROUNDED" SHIPS SERVICE ELECTRICAL DISTRIBUTION EQUIPMENT SHALL BE PROVIDED WITH IDENTIFICATION WARNING PLAQUES WITH THE ABOVE RECOMMENDED DESIGNATION.

GENERAL NOTES:
1. THE RFP DRAWINGS ARE CONCEPTUAL AND ARE INTENDED FOR INFORMATIONAL PURPOSES ONLY. THEY ARE NOT INTENDED TO REPRESENT A FINAL DESIGN SOLUTION. SEE RFP SPECIFICATIONS FOR ADDITIONAL INFORMATION REGARDING APPLICATION OF RFP DRAWINGS.

GRAPHIC SCALES



FRC SHORE TIE ELECTRICAL SERVICE DIAGRAM

THE SAME REQUIREMENTS FOR A DEDICATED ISOLATION TRANSFORMER, GROUND FAULT MONITOR, PHASE LOSS RELAY, METER, SPD, ETC APPLY TO THE SHORE TIE ELECTRICAL SERVICE FOR THE 87 WPB.

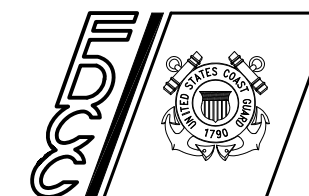
NOTES:

- 1 PROVIDE PHASE LOSS RELAY WITH LED INDICATING LIGHTS. RELAY MAY INCLUDE PHASE REVERSAL MONITORING BUT SHALL NOT HAVE UNDERVOLTAGE OR OVERVOLTAGE TRIP FUNCTIONS.
- 2 PROVIDE GROUND FAULT MONITOR FOR UNGROUNDED SHORE POWER SYSTEMS; SEE RFP SPECIFICATIONS FOR REQUIREMENTS.
- 3 PROVIDE ALL SHORE-TIE POWER ISOLATION TRANSFORMERS WITH PRIMARY VOLTAGE TAP ADJUSTING MANUAL SWITCH AND KIRK KEY INTERLOCK WITH THE TRANSFORMER PRIMARY OVERCURRENT PROTECTIVE DEVICE.
- 4 PROVIDE METERING OF SHORE TIE SERVICES PER RFP SPECIFICATIONS.
- 5 SAFETY INTERLOCKED POWER MODULE SHOWN - SEE RFP SPECIFICATIONS FOR RECEPTACLE REQUIREMENTS.
- 6 PROVIDE SURGE PROTECTIVE DEVICE.

CONSULTANTS

D/B RFP DOCS
07/05/11

U. S. COAST GUARD FACILITIES DESIGN & CONSTRUCTION CENTER



5505 ROBIN HOOD ROAD SUITE K
NORFOLK, VIRGINIA 23513-2431

ISSUE		
MARK	DATE	DESCRIPTION

A/E PROJECT NO:
CAD FILE NAME: A073581208E102.dwg
DESIGNED BY:
DRAWN BY:
EDITED BY:
CHECKED BY:

SCALE: PLOT SCALE: 1 : 1

SHEET TITLE
HOMEPORTING FRC CUTTERS
USCG SECTOR SAN JUAN
SAN JUAN PR

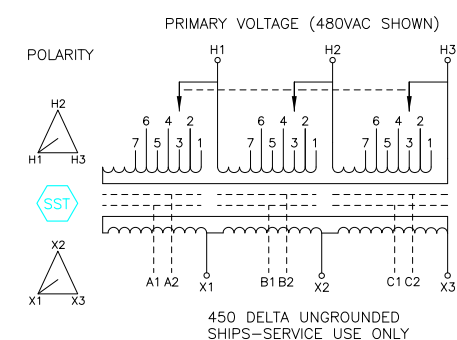
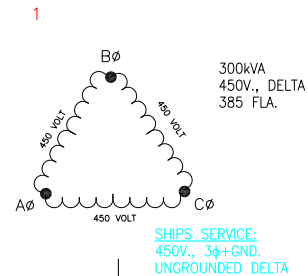
ELECTRICAL DIAGRAM&EQ SHELTER PLAN

REVIEWED BY: REVIEWED BY: REVIEWED BY:
PROJECT ENG. BRANCH CHIEF TECH. DIRECTOR

APPROVING OFFICER DATE

PROJECT NUMBER DRAWING NUMBER
07-3581208 A073581208E102

DISCIPLINE/SHT NO SHEET 7 OF 8
E102



SHIPS SERVICE VOLTAGE ISOLATION TRANSFORMER REQUIREMENTS:

- 450V., DELTA UNGROUNDED
- COPPER WINDINGS
- 6-TAPS: 2@2.5% AN, 4@2.5% BN
- DUAL ELECTROSTATIC SHIELDS BETWEEN LV & CORE, AND BETWEEN HV & LV.

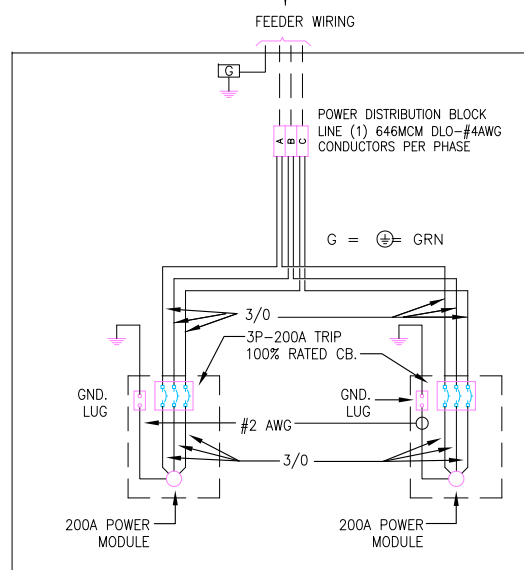
CONNECT ALL SHIELDS TOGETHER AND GROUND TO THE TRANSFORMER FRAME GROUND.

PROVIDE "SHIPS-SERVICE" TRANSFORMER WITH PRIMARY TAP CHANGING SWITCH MTD. ON THE ENCLOSURE WITH A REGISTERED "KIRK-KEY" INTERLOCK SWITCH WITH THE TRANSFORMER PRIMARY OVERCURRENT PROTECTIVE DEVICE (CIRCUIT BREAKER SHOWN FOR EXAMPLE.)

NOTES:

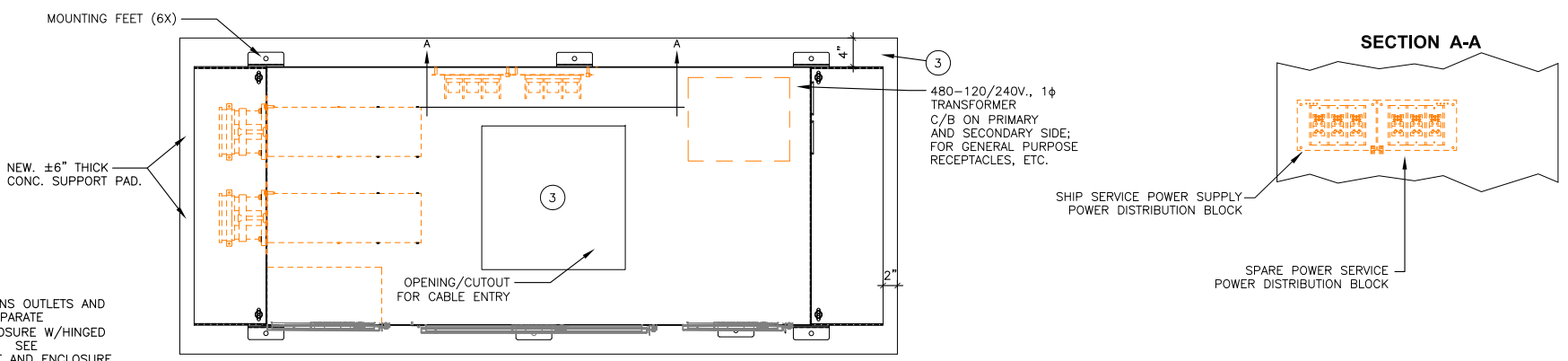
1. THE RFP DRAWINGS ARE CONCEPTUAL AND ARE INTENDED FOR INFORMATIONAL PURPOSES ONLY. THEY ARE NOT INTENDED TO REPRESENT A FINAL DESIGN SOLUTION. SEE RFP SPECIFICATIONS FOR ADDITIONAL INFORMATION REGARDING APPLICATION OF RFP DRAWINGS.
2. THIS DRAWING IS ONLY INTENDED TO SHOW A TYPICAL SHORE POWER ENCLOSURE WITH INTERLOCKED POWER MODULES FOR AN FRC SHORE TIE SERVICE.

"SHIPS-SERVICE" VOLTAGE ISOLATION TRANSFORMER DETAIL



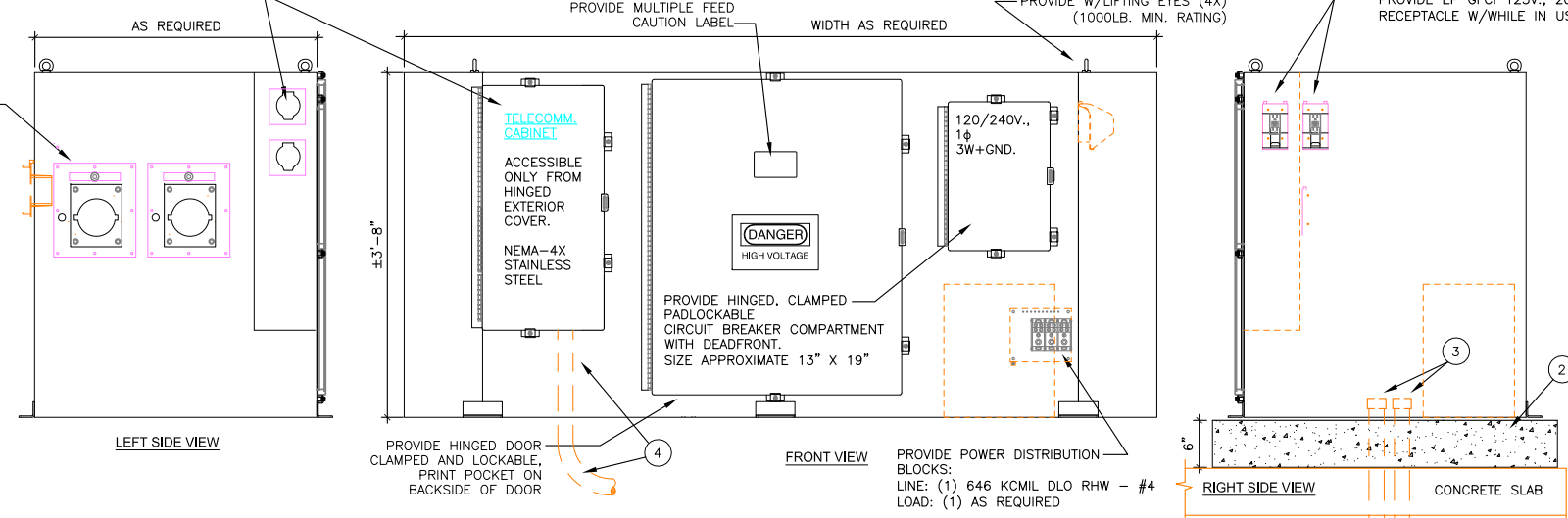
SHORE POWER ENCLOSURE FRC WIRING
450V., 3-W+GND., UNGROUNDED DELTA

SHORE POWER ENCLOSURE - WIRING GUIDE DETAIL



PROVIDE TELECOMMUNICATIONS OUTLETS AND FIBER CONNECTION IN A SEPARATE TELECOMMUNICATIONS ENCLOSURE W/HINGED CLAMPED LOCKABLE COVER. SEE SPECIFICATIONS FOR OUTLET AND ENCLOSURE REQUIREMENTS.

"TYPICAL" 200A, 480V, 3P, 4W INTERLOCKED POWER MODULE WITH RUSSELLSTOLL DS2404FR000 RECEPTACLE



SHORE POWER ENCLOSURE NOTES:

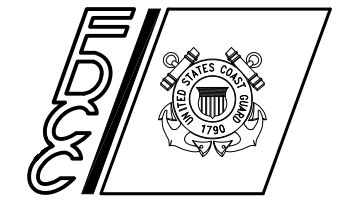
1. SEE RFP SPECIFICATIONS FOR SHORE POWER ENCLOSURE REQUIREMENTS. THE ENCLOSURE SHOWN IS INTENDED TO ILLUSTRATE FEATURES OF A TYPICAL ENCLOSURE; ENCLOSURES WILL DIFFER DEPENDING ON THE SPECIFIC SHORE TIE RECEPTACLES REQUIRED AT EACH BERTHING LOCATION.
2. PROVIDE A CONCRETE SUPPORT PAD, MINIMUM 6" HIGH AS INDICATED.
3. PROVIDE ALL CONDUIT STUB-UPS IN THE CUTOUT AREA.
4. PROVIDE A CONDUIT CUTOUT AREA TO PERMIT TELECOMMUNICATIONS CONDUIT TO ENTER THE ENCLOSURE AND TERMINATE DIRECTLY TO THE SEPARATE TELECOMMUNICATIONS CABINET. COORDINATE SIZE AND LOCATION WITH PIER CONSTRUCTION.

SHORE POWER ENCLOSURE EXAMPLE DRAWING
SCALE: NO SCALE

CONSULTANTS

D/B RFP DOCS
07/05/11

U. S. COAST GUARD
FACILITIES DESIGN &
CONSTRUCTION CENTER



5505 ROBIN HOOD ROAD SUITE K
NORFOLK, VIRGINIA 23513-2431

ISSUE		
MARK	DATE	DESCRIPTION

A/E PROJECT NO:
CAD FILE NAME: A073581208E103
DESIGNED BY:
DRAWN BY:
EDITED BY:
CHECKED BY:

SCALE: PLOT SCALE: 1 : 1

SHEET TITLE

FRC HOMEPORTING
USCG SECTOR SAN JUAN
SAN JUAN PR

ELECTRICAL
SHORE POWER ENCLOSURE

REVIEWED BY:	REVIEWED BY:	REVIEWED BY:
PROJECT ENG.	BRANCH CHIEF	TECH. DIRECTOR

APPROVING OFFICER DATE

PROJECT NUMBER DRAWING NUMBER

07-3581208 A073581208E103

DISCIPLINE/SHT NO SHEET 8 OF 8

E103