

BUILDING 78 / 80 UPGRADES

U.S. COAST GUARD YARD

BALTIMORE, MARYLAND

PROJECT NUMBER - 3114033

MICHAEL BAKER JR., INC
MOON TOWNSHIP, PA

Baker

CONSULTANTS

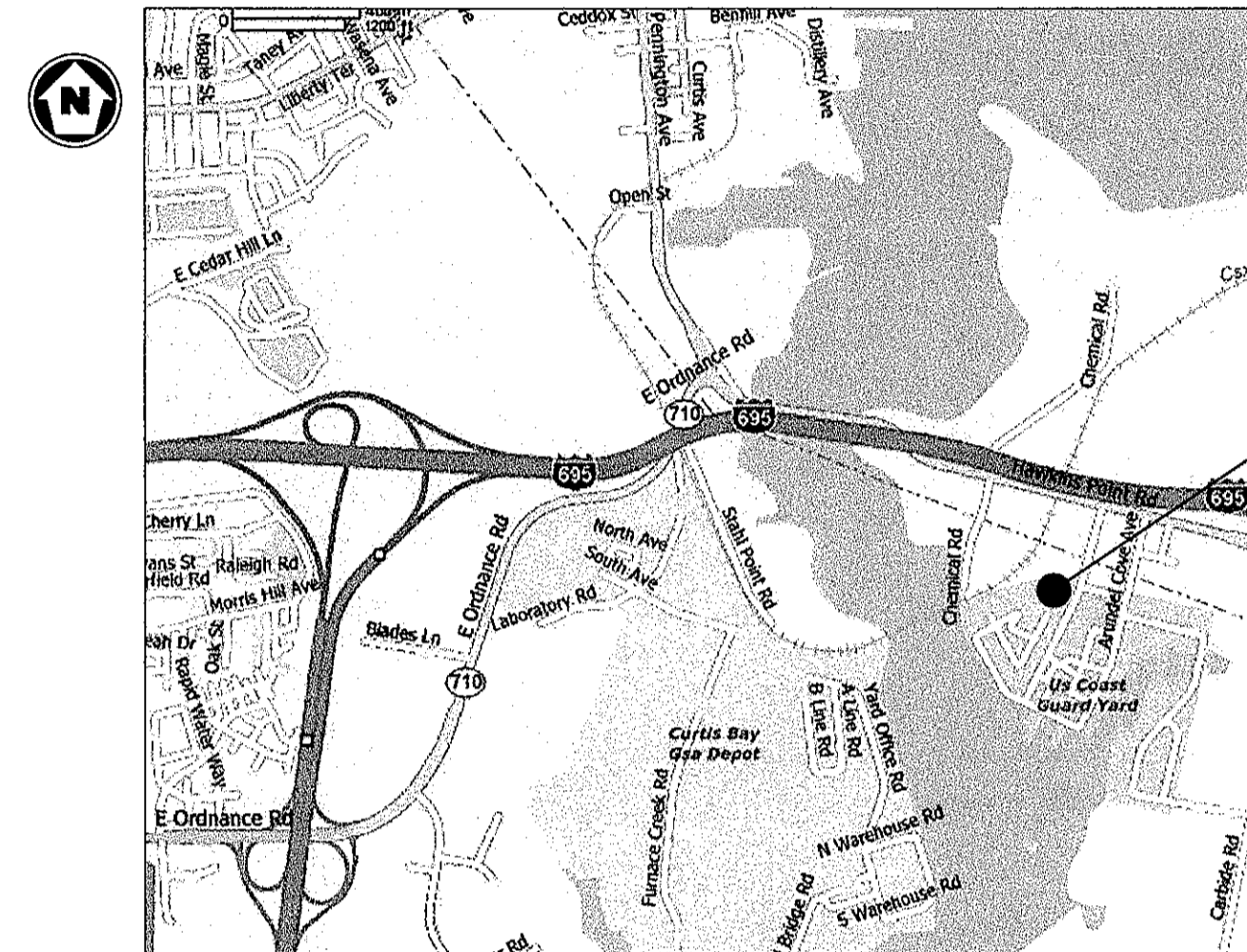
INDEX OF SHEETS

G-001	COVER SHEET	S-001	MECH. GEN. NOTES
G-002	ABBREVIATIONS AND SYMBOLS	S-002	MECH. GEN. NOTES
V-101	SITE SURVEY	S-100	FOUNDATION PLAN - NORTH
C-101	PROPOSED SITE PLAN	S-101	FOUNDATION & LINTEL PLAN
C-102	DEMOLITION PLAN	S-300	BLDG. 80 FDN SECTIONS
C-103	PROPOSED UTILITY PLAN	S-301	SLAB & FDN SECTIONS
C-104	PROPOSED GRADING & SEC PLAN	S-302	NORTH WALL ELEV & SECT
C-105	NOTES	S-303	SLAB & FDN SECTIONS
C-106	EROSION CONTROL DETAILS	S-304	FDN & LINTEL SECTIONS
C-107	DETAILS	S-500	TYPICAL DETAILS
C-108	DETAILS		
A-100	FLOOR PLAN - DEMO WORK	M-001	ABBREVIATIONS, LEGEND AND GENERAL NOTES
A-101	FLOOR PLAN - NEW WORK	M-100	MECHANICAL DEMO PLAN
A-102	PAINT / BLAST BOOTH PLAN	M-101	FLOOR PLAN -NEW WORK
A-103	SEPARATION WALL PLAN & ELEV.		
A-104	SEPARATION WALL SECTIONS & DETL.	E-001	ELECTRICAL SYMBOLS
A-200	INTERIOR ELEVATIONS	EL101	FLOOR PLAN-LIGHTING
A-305	WALL SECTIONS	EP101	FLOOR PLAN-POWER
A-401	ENLARGED FLOOR PLAN	E-501	BUSHBAR DETAIL
A-501	ARCH. DETAILS	E-601	ELECTRICAL SINGLE LINE
A-601	SCHEDULES	E-701	B-78 LIGHTING PLAN
		E-702	B-78 NOTES AND LEGEND
		E-703	B-78 POWER PLAN
A-701	BLDG. 80 PHOTOS	E-704	B-78 TRENCH PLAN
A-702	BLDG. 78 PHOTOS	E-705	B-78 PANEL SCHEDULE
A-703	BLDG. 78/80 PHOTOS		

CODE NOTES

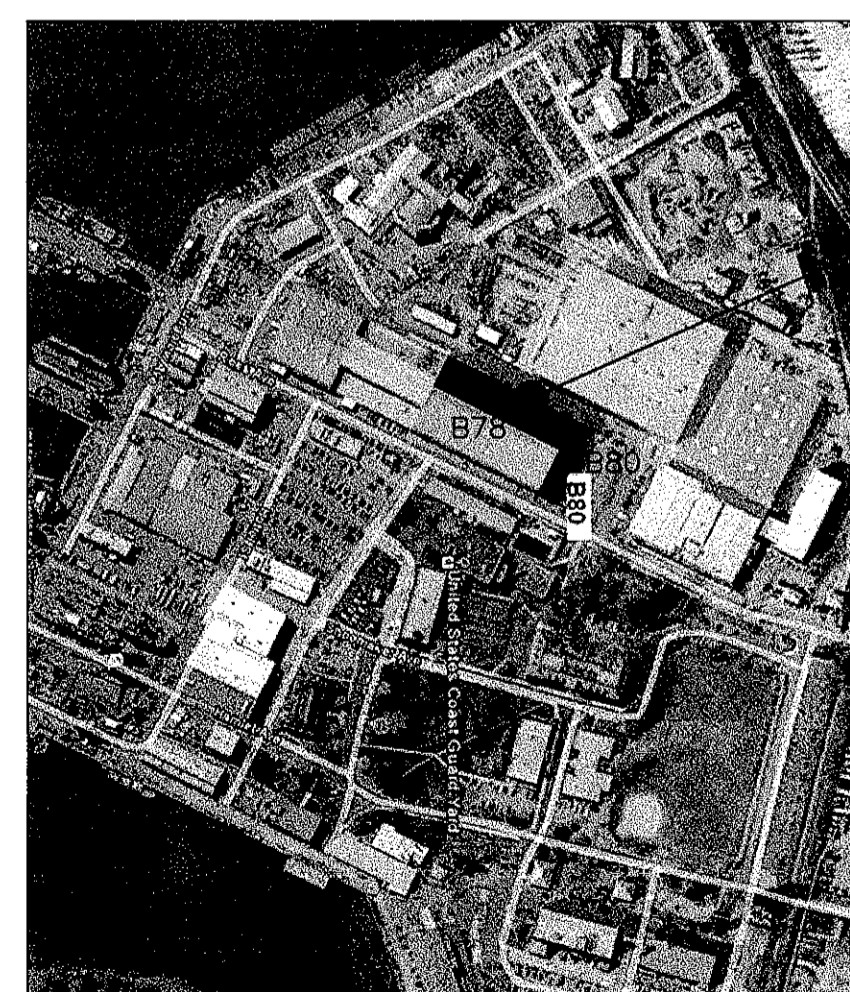
Renovation of the existing facilities will follow the International Existing Building Code (IEBC) along with the International Building Code (IBC) 2006 editions. Building 80 has Type IV construction, an IBC Occupancy Classification of Group B, and S-2 occupancy. An Automatic Sprinkler System and Fire Alarm Detection System will not be required. Building 78 has Type IB construction, an IBC Occupancy Classification of Group F-1. No modification to existing building suppression systems is required at this phase of construction. Occupancy is calculated as follows:

- Building 80 remaining Office SF is 542 @ 100 SF/Person = 6 people
- Building 80 remaining Storage SF is 4,020 @ 300 SF/Person = 14 people
- 1 exterior egress door for Building 80 is provided.
- Building 78 overall SF is 130,060 @ 200 SF/Person = 650 people
- Building 78 northwest bay SF is 17,684 @ 200 SF/Person = 89 people
- 15 exterior egress doors for Building 78 are provided.



LOCATION MAP

SCALE: NONE



U.S.C.G. FACILITY ENGINEERING
BALTIMORE, MARYLAND

VACINITY MAP

SCALE: NONE

U.S. COAST GUARD
FACILITY ENGINEERING



BALTIMORE, MD
2401 HAWKINS POINT RD
BALTIMORE, MD 21226

ISSUE

MARK	DATE	DESCRIPTION

A/E PROJECT NO:

CAD FILE NAME:

DESIGNED BY: MICHAEL BAKER JR., INC.

DRAWN BY: MICHAEL BAKER JR., INC.

EDITED BY: D.T. BARNETT

CHECKED BY: D. ANDRESE

SCALE: AS NOTED PLOT SCALE: 1:1

SHEET TITLE

BUILDING 78/80 UPGRADES
CG YARD

BALTIMORE MARYLAND

GENERAL
COVER SHEET

REVIEWED BY: P. CHANG

D. ANDRESE

PROJECT ENG. ELECTRICAL ENG. STRUCT. ENG.

JOHN P. SLAUGHTER, CDR

APPROVING OFFICER

06/08/2010

DATE

PROJECT NUMBER DRAWING NUMBER

3114033 Y783114033G001

DISCIPLINE/SHT NO SHEET 1 OF 47

G-001

REFER TO OTHER DISCIPLINES FOR ADDITIONAL SYMBOLS.

REFER TO OTHER DISCIPLINES FOR ADDITIONAL ABBREVIATIONS.

DRAFTING SYMBOLS LEGEND

GENERAL NOTES:

MICHAEL BAKER JR., INC

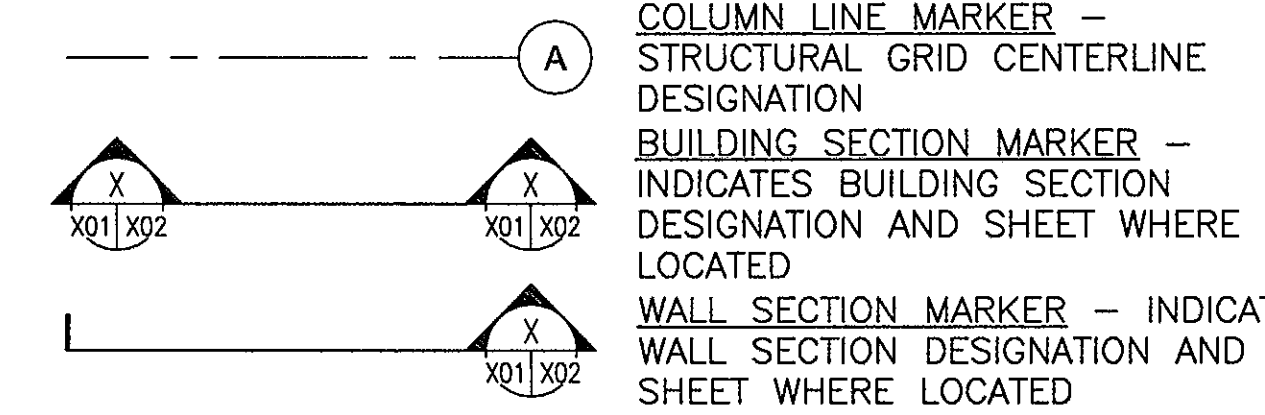
MOON TOWNSHIP, PA

Baker

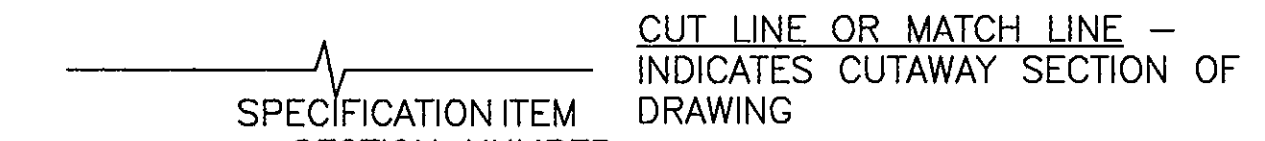
CONSULTANTS

2 DRAWING TITLE
G-002G-002 SCALE: NTS

TITLE BAR - INDICATES DRAWING REFERENCE NO., DESCRIPTION & SCALE



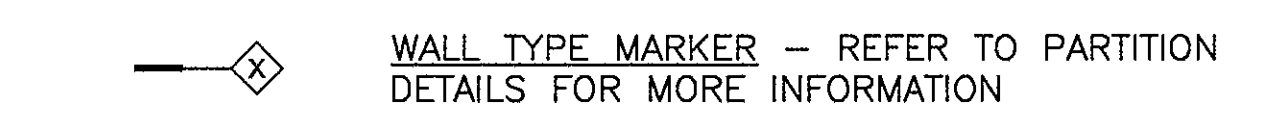
DATUM OR LEVEL LINE MARKER - INDICATES ELEVATION LINE ON ELEVATION OR SECTION



CUT LINE OR MATCH LINE - INDICATES CUTAWAY SECTION OF DRAWING



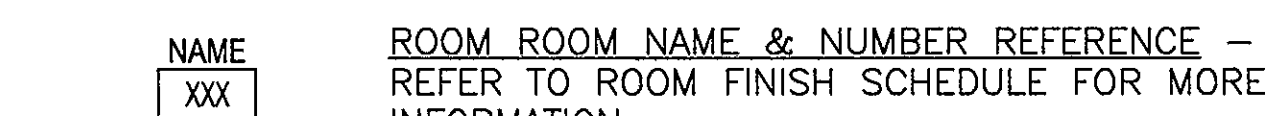
KEY NOTE MARKER - REFER TO SIDE BAR KEYNOTES AND SPECIFICATIONS



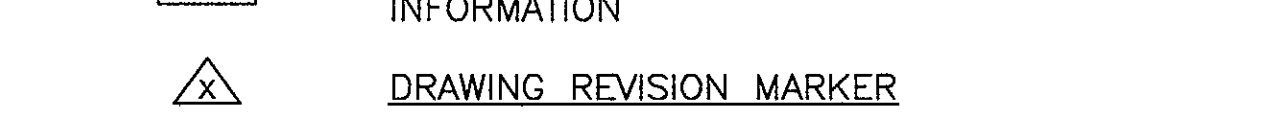
DOOR NUMBER - REFER TO DOOR SCHEDULE FOR MORE INFORMATION



WALL TYPE MARKER - REFER TO PARTITION DETAILS FOR MORE INFORMATION



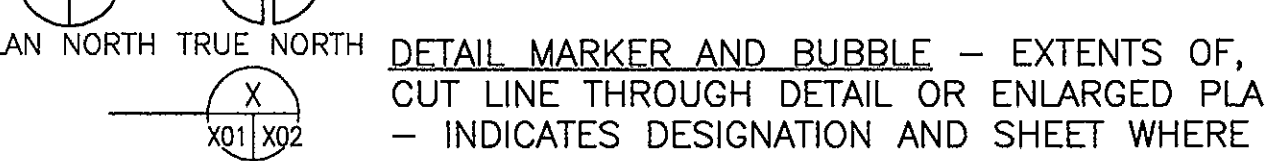
WINDOW MARKER - REFER TO WINDOW ELEVATIONS FOR MORE INFORMATION



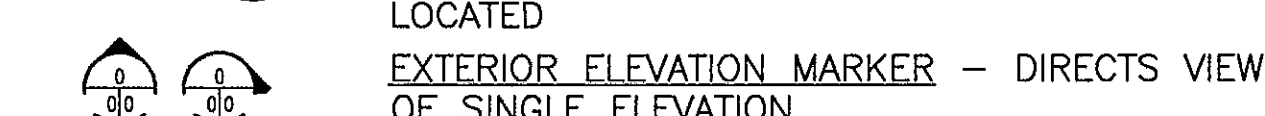
ROOM ROOM NAME & NUMBER REFERENCE - REFER TO ROOM FINISH SCHEDULE FOR MORE INFORMATION



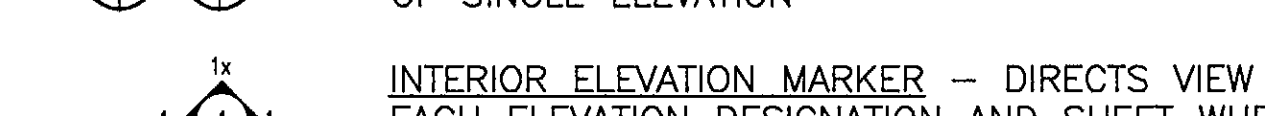
DRAWING REVISION MARKER



PROJECT NORTH MARKER



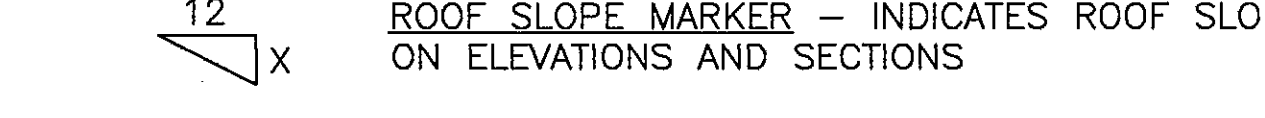
DETAIL MARKER AND BUBBLE - EXTENTS OF, OR CUT LINE THROUGH DETAIL OR ENLARGED PLAN - INDICATES DESIGNATION AND SHEET WHERE LOCATED



EXTERIOR ELEVATION MARKER - DIRECTS VIEW OF SINGLE ELEVATION



INTERIOR ELEVATION MARKER - DIRECTS VIEW OF EACH ELEVATION DESIGNATION AND SHEET WHERE LOCATED

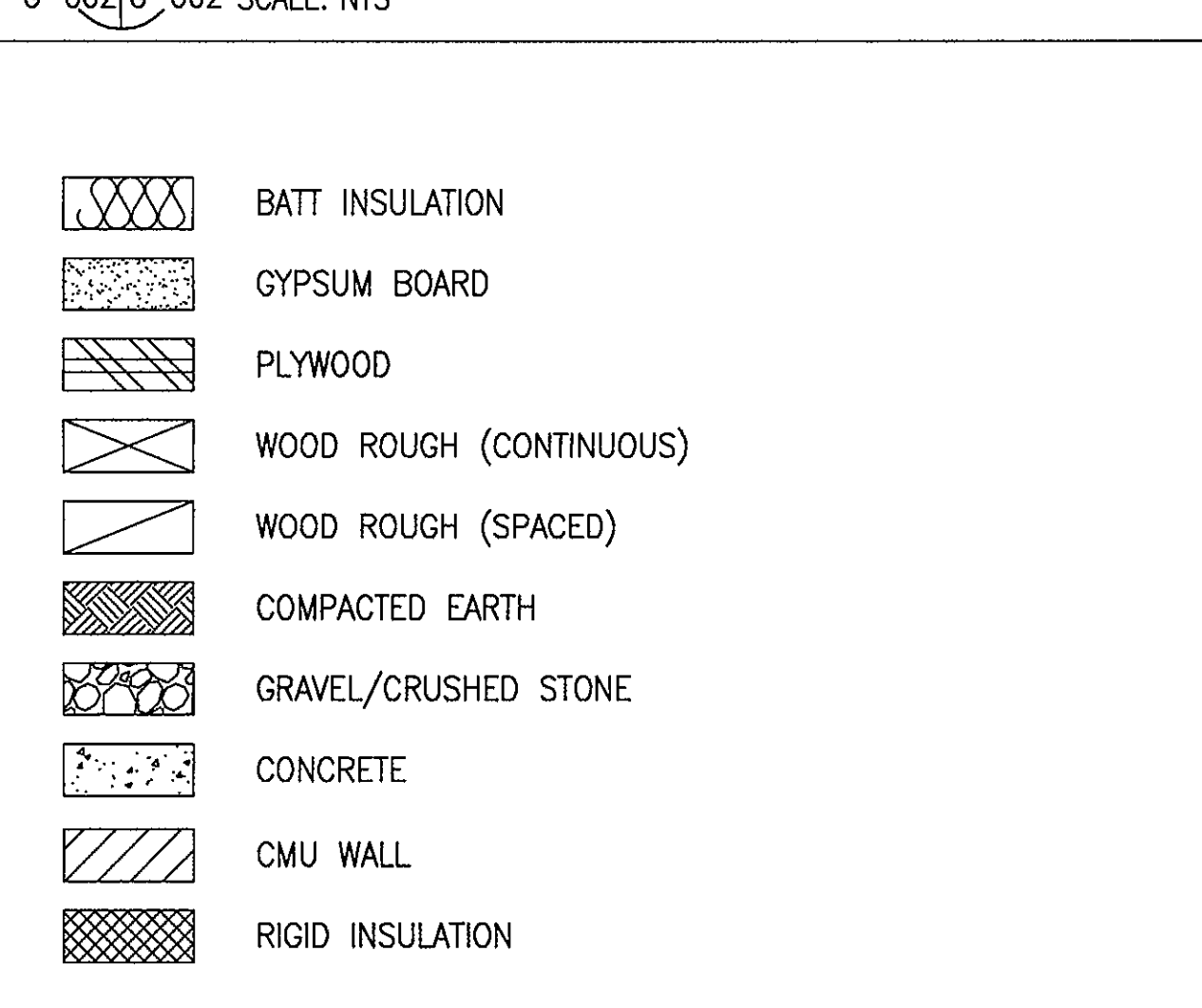


ROOF SLOPE MARKER - INDICATES ROOF SLOPE ON ELEVATIONS AND SECTIONS



ROOF SLOPE MARKER - INDICATES ROOF SLOPE ON ROOF PLAN

1 SYMBOLS
G-002G-002 SCALE: NTS



2 MATERIALS
G-002G-002 SCALE: NTS

A
ANGLE
AT
A/C AIR CONDITION
ACT ACOUSTICAL CEILING TILE
A.F.F. ABOVE FINISH FLOOR
ALT. ALTERNATE
ALUM. ALUMINUM
ANCHOR BOLT ANCHOR BOLT
ANODIZ ANODIZED
APPROX. APPROXIMATE
ARCH. ARCHITECTURAL
ASPH ASPHALT
AUX. AUXILIARY

B
BD. BOARD
BF BROOM FINISH
BIT. BITUMINOUS
BLK'G. BLOCKING
BM. BEAM
B.O. BOTTOM OF
BOT., BOTT. BOTTOM
BRZ. BRONZE
BU. BUILT-UP

C
CER. CERAMIC
C. COND. CONDUIT
C.J. CONTROL JOINT
CL. CENTER LINE
CLG. CEILING
CMU CONCRETE MASONRY UNIT
C.O. CLEAN OUT
COL. COLUMN
CONC. CONCRETE
CONN. CONNECTION
CONSTR. CONSTRUCTION
CONT. CONTINUOUS
CONTR. CONTRACTOR
CPT. CARPET
C.T. CERAMIC TILE
CTR. CENTER
C.W. COLD WATER

D
Ø DIAMETER
DET. DETAIL
DBL. DOUBLE
DIA. DIAMETER, DIAGRAM
DN. DOWN
D.S. DOWN SPOUT
DWG. DRAWING

E
EA. EACH
ELEC., ELECT. ELECTRIC
ELEV., EL. ELEVATION
E.F. EXHAUST FAN
E.J. EXPANSION JOINT
EQ. EQUAL
EQUIP. EQUIPMENT
E.W. EACH WAY
E.W.C. ELECTRIC WATER COOLER
EXT. EXTERIOR
EXIST. EXISTING
EPB EXPANDED PERLITE BOARD

F
FAC. FACTORY
F.C. FINISHED CEILING
F.D. FLOOR DRAIN
F.E. FIRE EXTINGUISHER
FIN. FINISH
F.F. FINISH FLOOR
FIXT. FIXTURE
F.O.M. FACE OF MASONRY
F.O.S. FACE OF STUD
F.S. FLOOR SINK
FT. FOOT
FTG. FOOTING
F.V. FIELD VERIFY

3 ARCHITECTURAL ABBREVIATIONS
G-002G-002 SCALE: NTS

G
G.F.C.I. GOVERNMENT FURNISHED CONTRACTOR INSTALLED
GA. GAUGE
GALV. GALVANIZED
G.B. GYPSUM BOARD
G.C. GENERAL CONTRACTOR
GL. GLASS
GOVT. GOVERNMENT
G.P.M. GALLONS PER MINUTE
GRD. GROUND
G.W. GREASY WASTE
G.W.B. GYPSUM WALL BOARD
GYP. GYPSUM

H
H.B. HOSE BIB
H.C. HOLLOW CORE, HANDICAP
H.D. HAND DRYER
HEX. HEXAGONAL
H.M. HOLLOW METAL
H.P. HOUR
HR. HOUR
HT., HGT. HEIGHT
H.W. HOT WATER

I
I.D. INSIDE DIAMETER
IN. INCH
INSUL. INSULATION
INT. INTERIOR

J
JAN. JANITOR
JST. JOIST
JT. JOINT

K
K.O. KNOCK OUT

L
L LONG
LAM. LAMINATE
LAV. LAVATORY
L.L.H. LONG LEG HORIZONTAL
L.L.V. LONG LEG VERTICAL
LOC. LOCATION
L.P. LOW POINT
LT. LIGHT

M
MAS. MASONRY
MAT'L. MATERIAL
MAX. MAXIMUM
M.C., MICWV. MICROWAVE OVEN
MECH. MECHANICAL
MEMB. MEMBRANE
MEZZ. MEZZANINE
MFR. MANUFACTURER
MIN. MINIMUM
MISC. MISCELLANEOUS
M.O. MASONRY OPENING
M.R. MOISTURE RESISTANT
MTD. MOUNTED
MTL. METAL

N
N.I.C. NOT IN CONTRACT
NO., # NUMBER
NOM. NOMINAL
N.T.S. NOT TO SCALE

O
O.C. ON CENTER
O.D. OUTSIDE DIMENSION
OFF. OFFICE
O.H. OVERHEAD
O/O OVERHEAD
OPNG. OPENING
OPP. OPPOSITE

P
PLATE
PLWD., PLYWD. PLYWOOD
PNT. PAINT
P.O.B. POINT OF BEGINNING
P.O.S. POINT OF SALE
PREFAB. PREFABRICATED
P.S.F. POUNDS PER SQ. FOOT
P.S.I. POUNDS PER SQ. INCH
P.T. PRESSURE TREATED
PTD. PAINTED
PTN. PARTITION
P.V.C. POLYVINYL CHLORIDE

R
RAD. (R) RADIUS
R.D. ROOF DRAIN
REBAR REINFORCING BAR
RECEPT. RECEPTACLE
REF. REFERENCE
REINF. REINFORCING
REQ'D. REQUIRED
REV. REVISED, REVISION
RM. ROOM
R.O. ROUGH OPENING

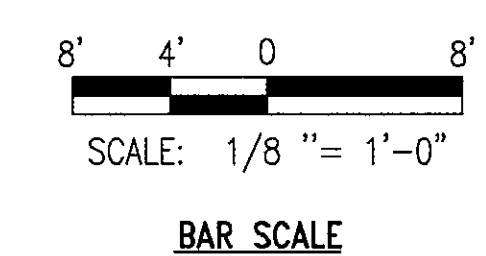
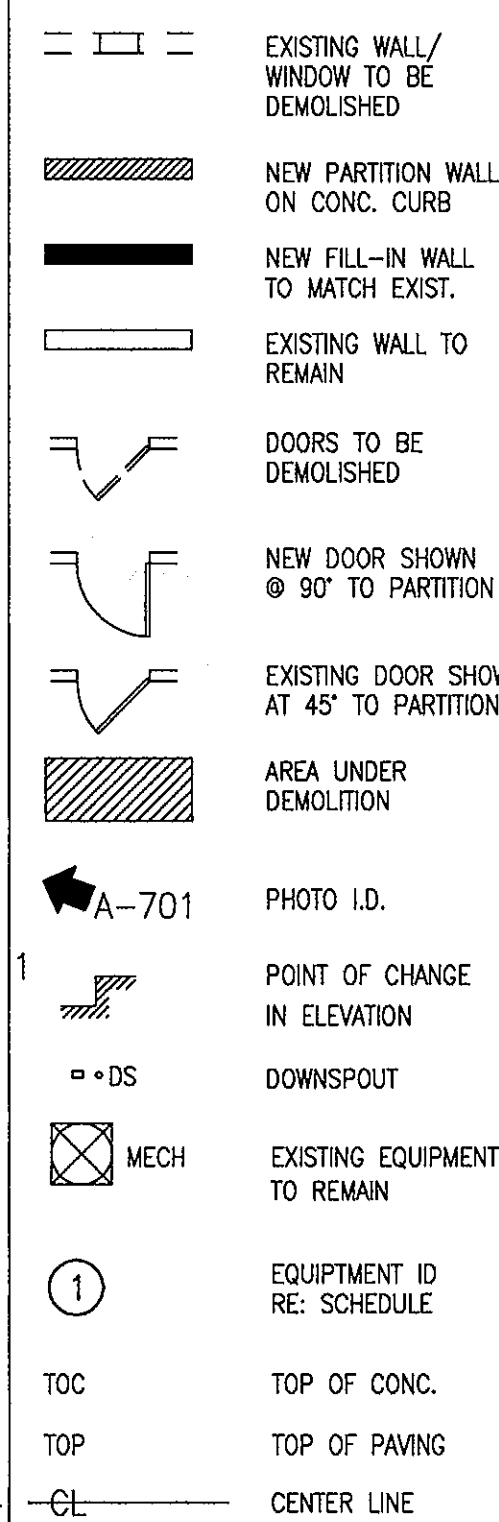
S
SOUTH
SAT SUSPENDED ACOUSTICAL TILE
S.C. SOLID CORE
S.F. SQUARE FEET
SHT. SHEET
SPEC. SPECIFICATION/PROJECT MANUAL
S/S, S.S. STAINLESS STEEL
STD. STANDARD
STL. STEEL
STOR. STORAGE
STRUCT. STRUCTURAL
STN. STAIN, STAINED
SURF. MTD. SURFACE MOUNTED
SWC. SOLID WOOD CORE

T
TOILET
TEL. TELEPHONE
TEMP. TEMPERATURE
THRU. THROUGH
T&G. TONGUE AND GROOVE
T.O. TOP OF
T.O.S. TOP OF STEEL
T.F. TROWEL FINISH
TYP. TYPICAL

U
U.C. UNDER CUT
U.L. UNDERWRITERS LABORATORY
U.N.O. UNLESS NOTED OTHERWISE
UR. URINAL
UTIL. UTILITY

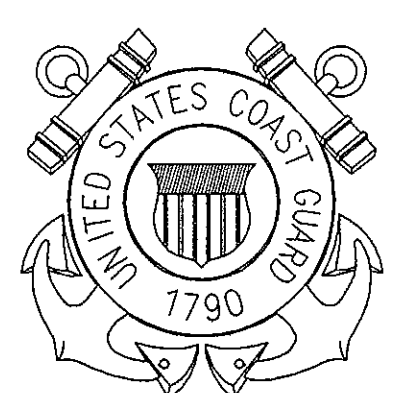
V
V.B. VAPOR BARRIER
V.C.T. VINYL COMPOSITION TILE
VEN. VENEER
VENT. VENTILATION
VERT. VERTICAL
VEST. VESTIBULE
V.F.T. VINYL FLOOR TILE
V.I.F. VERIFY IN FIELD
V.T.R. VENT THRU ROOF
V.W.C. VINYL WALL COVERING

W
W WEST
W/ WITH
W.C. WATER CLOSET
WD. WOOD
W.H. WATER HEATER
W/O WITHOUT
W.P. WATER PROOF
W.W.F. WELDED WIRE FABRIC
W.W.M. WELDED WIRE MESH



- 1. GENERAL CONTRACTOR TO FIELD VERIFY EXISTING CONDITIONS PRIOR TO DEMOLITION.
- 2. GENERAL CONTRACTOR TO COORDINATE DEMOLITION WORK WITH EXISTING CONDITIONS & LOCATION OF NEW WORK.
- 3. REMOVE EXISTING ROOFING SYSTEM, TRUSSES, FRAMING AS INDICATED. PREPARE AREA FOR INSTALLATION OF NEW FRAMING, RETAINING WALL, AND EXTERIOR WALL SYSTEM.
- 4. THE FLOOR PLANS ON THIS DRAWING ARE FOR GENERAL ORIENTATION AND CONCEPTUAL PLANNING ONLY. THEY WERE DRAWN FROM A VARIETY OF SOURCES WITHOUT REPRESENTATION AS TO ACCURACY OR SCALE.
- 5. GENERAL CONTRACTOR TO TAKE PHOTOGRAPHS OR VIDEO TAPES OF EXISTING CONDITIONS, INCLUDING INTERIOR & EXTERIOR BUILDING SURFACES, SIDEWALKS, AND PAVING THAT MIGHT BE POTENTIALLY DAMAGED BY THE DEMOLITION WORK. SUBMIT DOCUMENTATION PRIOR TO BEGINNING OF WORK.
- 6. GENERAL CONTRACTOR TO PROVIDE STAGING AREA, INSTALL TEMPORARY FENCE, POST WARNING FOR SAFETY AND PROTECTION OF PERSONS FROM INJURY, PROTECTION OF BUILDING, SIDEWALKS AND PAVIN FROM DAMAGE.
- 7. GENERAL CONTRACTOR TO COORDINATE WORK ACTIVITIES ON A DAILY BASIS WITH THE CONTRACTING OFFICER, WHO WILL PLACE PROTECTIVE DUST OR WATER LEAKAGE COVERS OVER SENSITIVE EQUIPMENT OR FURNISHINGS OR WHERE IT IS DESIRED TO EVACUATE PEOPLE FROM UNDERNEATH THE WORK AREA.
- 8. IF HVAC EQUIPMENT, FIRE PROTECTION DEVICES ARE TO BE SHUT DOWN, COORDINATE WITH THE CONTRACTING OFFICER TO COVER AIR INTAKES THAT NEED TO BE SEALED DUE TO FUME LEAKAGE. COVER SENSITIVE EQUIPMENT OR FURNISHINGS WHILE WORK IS UNDERWAY. PROVIDE POST WARNING FOR SAFETY AND PROTECTION OF PERSONS FROM INJURY.
- 9. REMOVE AND REINSTALL EXISTING MECHANICAL AND ELECTRICAL SYSTEMS AS REQUIRED TO EXECUTE NEW WORK.
- 10. GENERAL CONTRACTOR SHOULD WORK WITH AN ABATEMENT CONTRACTOR IF ASBESTOS-CONTAINING SIDINGS OCCURS.
- 11. USE ROOF INSULATION, SPECIFICALLY APPROVED BY MANUFACTURER FOR COMPATIBILITY OF MATERIAL FOR PATCHING AND RE-ROOFING.

U.S. COAST GUARD
FACILITY ENGINEERING



BALTIMORE, MD
2401 HAWKINS POINT RD
BALTIMORE, MD 21226

ISSUE

MARK	DATE	DESCRIPTION

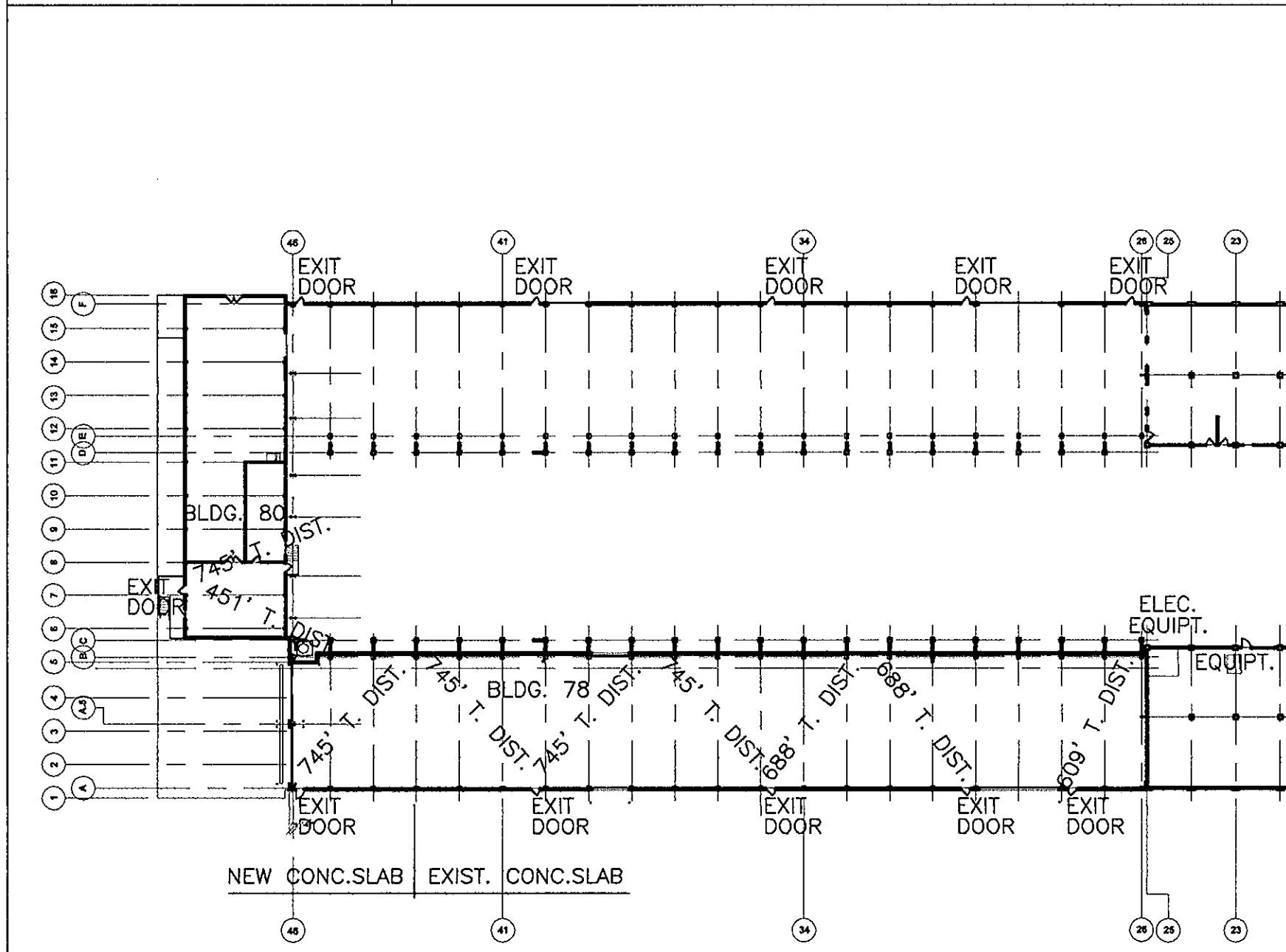
A/E PROJECT NO:
CAD FILE NAME:
DESIGNED BY: MICHAEL BAKER JR., INC
DRAWN BY: MICHAEL BAKER JR., INC.
EDITED BY: D.T. BARNETT
CHECKED BY: D. ANDRESE

SCALE: AS NOTED PLOT SCALE: 1:1

SHEET TITLE
**BUILDING 78/80 UPGRADES
CG YARD**
BALTIMORE MARYLAND
GENERAL COVER SHEET

REVIEWED BY: D. ANDRESE
REVIEWED BY: P. CHANG
REVIEWED BY: [Signature]
PROJECT ENG. ELECTRICAL ENG. STRUCT. ENG.
JOHN P. SLAUGHTER, CDR 06/08/2010
APPROVING OFFICER DATE

PROJECT NUMBER: 3114033
DRAWING NUMBER: Y783114033G002
DISCIPLINE/SHT NO: G-002
SHEET 2 OF 47



4 LIFE SAFETY PLAN
G-101G-101 SCALE: 1/32"=1'-0"