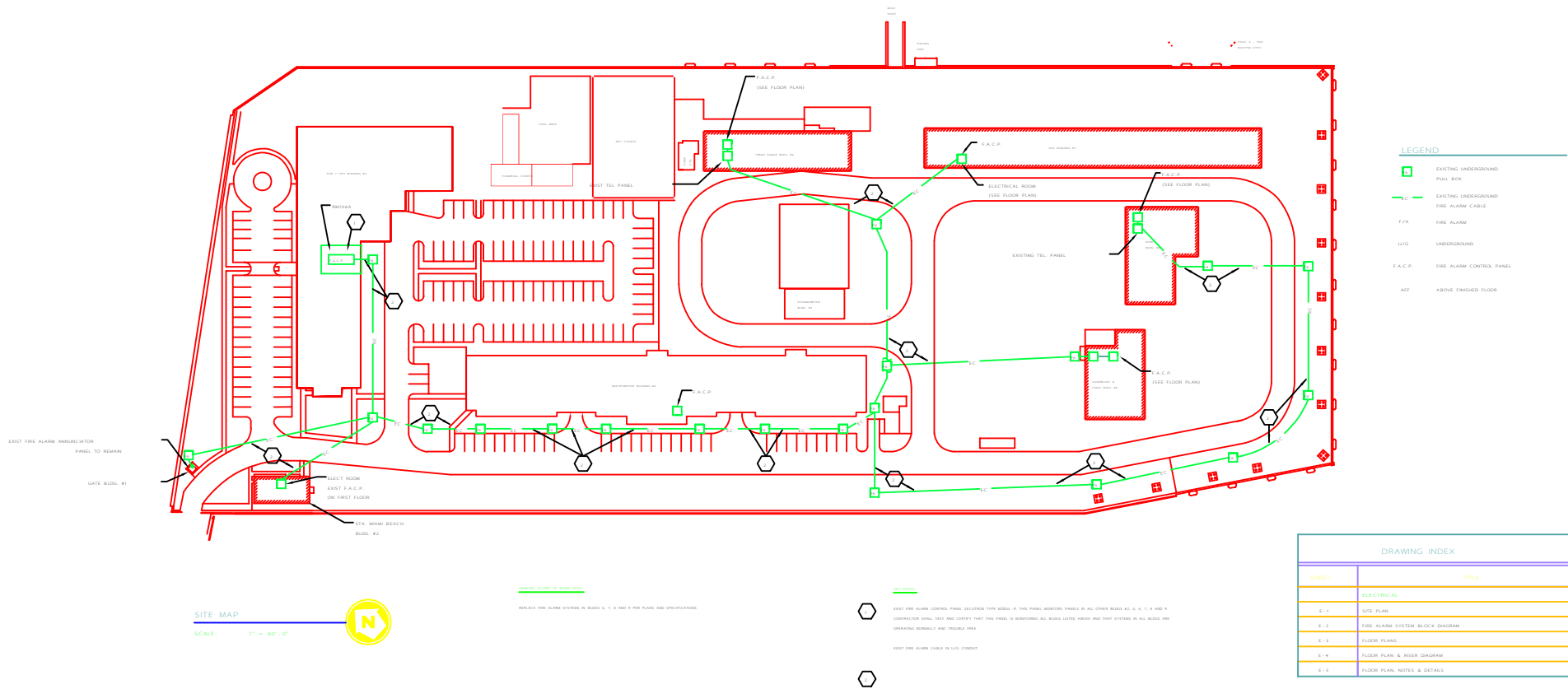




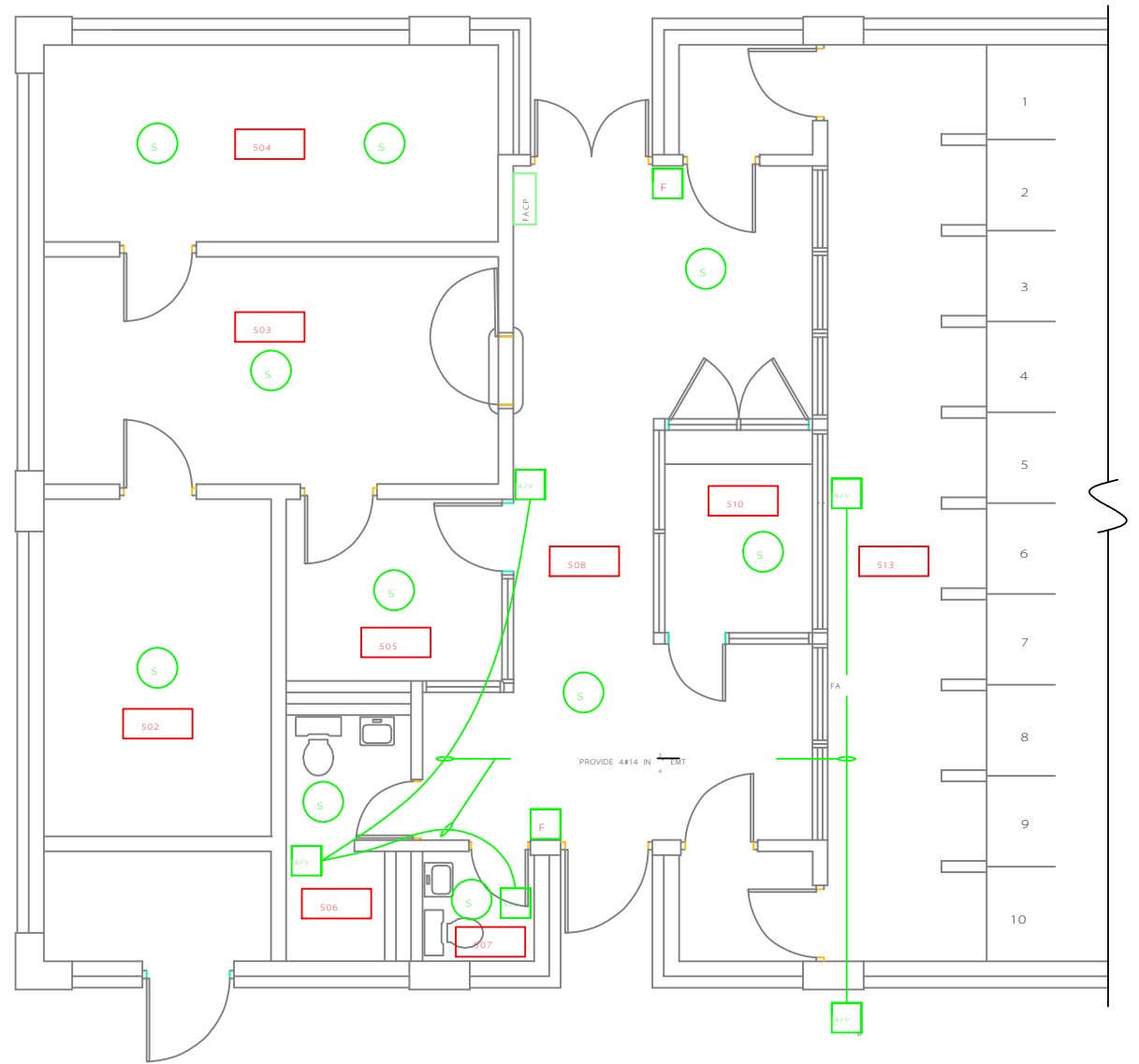
INTEGRATED SUPPORT COMMAND
MIAMI FLORIDA



REPAIR FIRE ALARM SYSTEMS



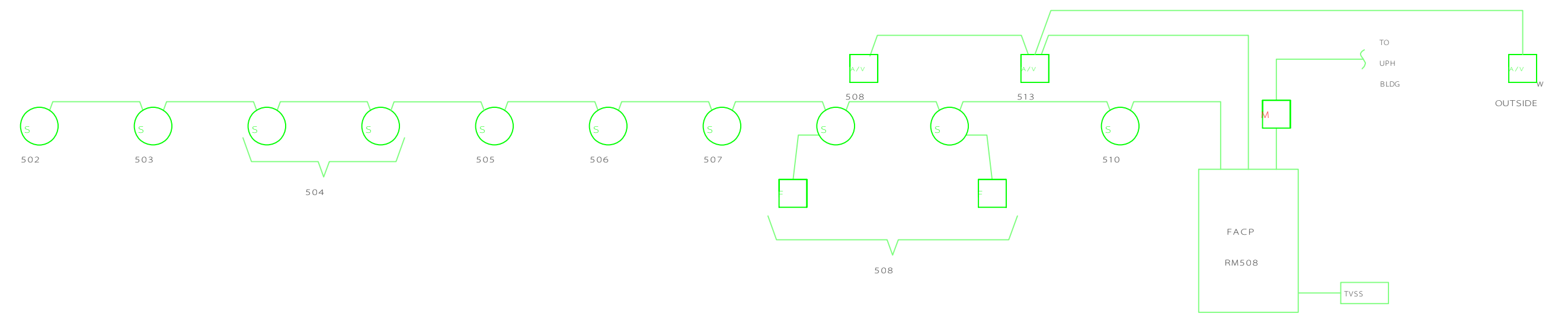
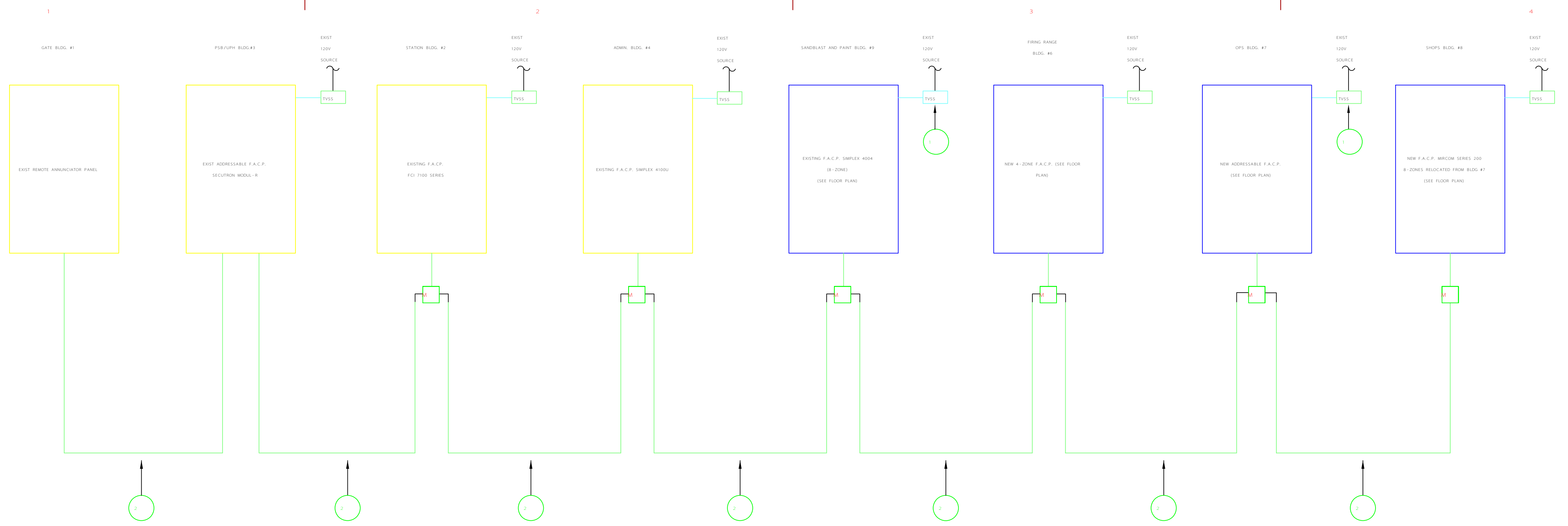
DRAWING INDEX	
SHEET	TITLE
ELECTRICAL	
E-1	SITE PLAN
E-2	FIRE ALARM SYSTEM BLOCK DIAGRAM
E-3	FLOOR PLANS
E-4	FLOOR PLAN & RISER DIAGRAM
E-5	FLOOR PLAN, NOTES, & DETAILS



FIRING RANGE BLDG PARTIAL
GROUND FLOOR PLAN

SCALE: 3/16" = 1'-0"



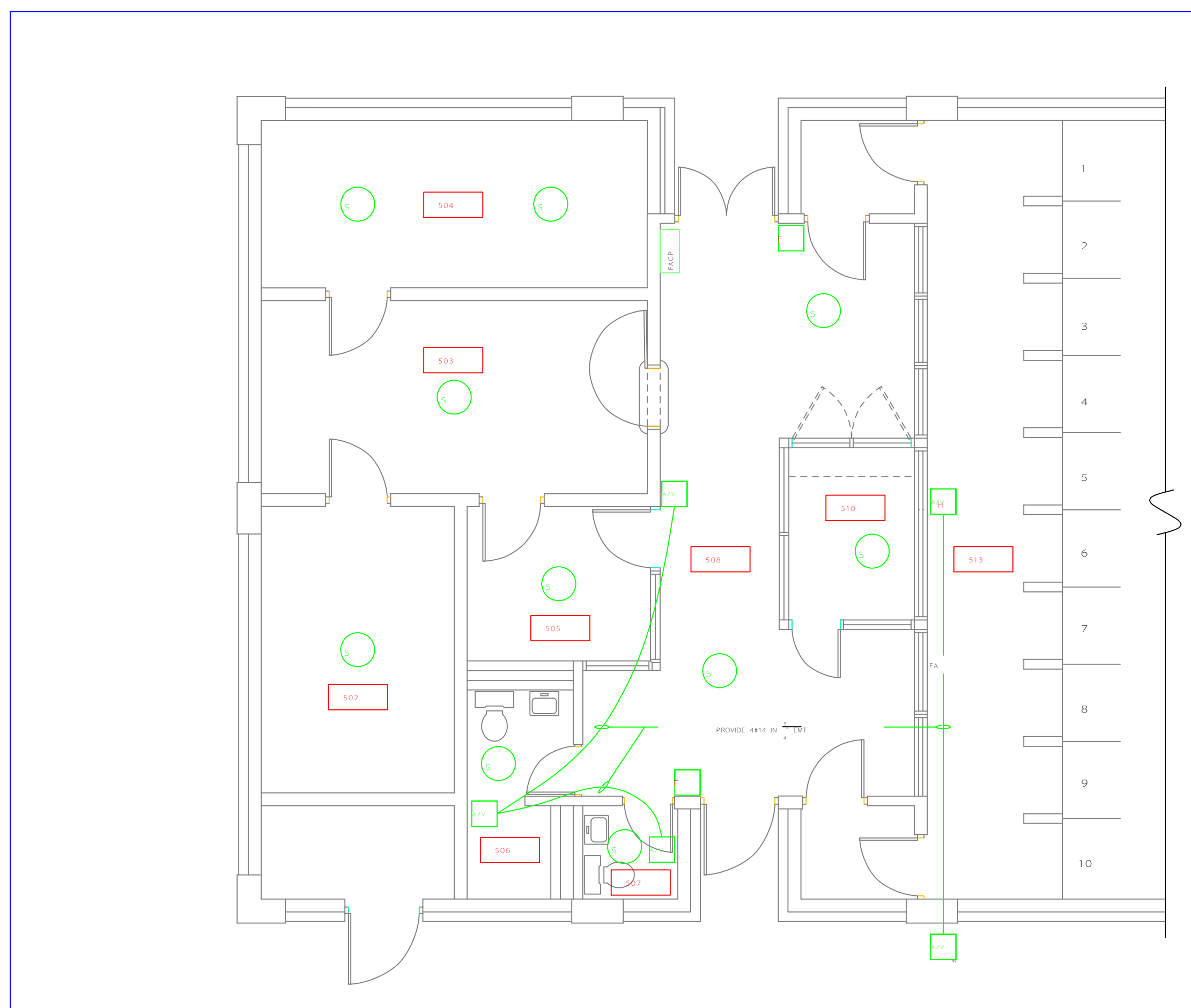


- LEGEND**
- FACP REPLACE EXIST PANEL WITH NEW 4-ZONE FIRE ALARM CONTROL PANEL.
 - S REPLACE EXIST SMOKE DETECTOR WITH NEW SMOKE DETECTOR.
 - H REPLACE EXIST HEAT DETECTOR WITH NEW HEAT DETECTOR.
 - M REPLACE MANUAL PULL STATION.
 - H/A REPLACE HORN WITH NEW HORN/STROBE COMBINATION APPLIANCE.
 - W PROVIDE NEW WEATHERPROOF FIRE ALARM HORN/STROBE COMBINATION APPLIANCE.
 - I EXIST ADDRESSABLE INTERFACE MODULE TO REMAIN.
 - TYSS EXIST (UNO) ENCLOSED POWER TRANSIENT VOLTAGE SURGE SUPPRESSOR TO REMAIN.
 - UNO UNLESS NOTED OTHERWISE.

NOTES

1 PROVIDE SURGE PROTECTION AT EACH FIRE ALARM CONTROL PANEL FOR THE 120-VOLT POWER SOURCE. SURGE SUPPRESSORS TO HAVE UL 1449 LISTING, INSTALL PER NEC 1999, ARTICLE 280. PROVIDE 2#12/412 GND CONDUCTORS IN 3/4" EMT FROM NEW TYSS TO EXIST FACP AND REESTABLISH 120V SERVICE TO FACP.

2 EXISTING UNDERGROUND FIRE ALARM CABLE TO REMAIN.



CONSULTANTS

U. S. COAST GUARD
CIVIL ENGINEERING UNIT
MIAMI

USCG, CEU MIAMI
15008 SW 117TH AVE
MIAMI, FLORIDA 33177

MARK	DATE	DESCRIPTION
	12/02/05	FINAL

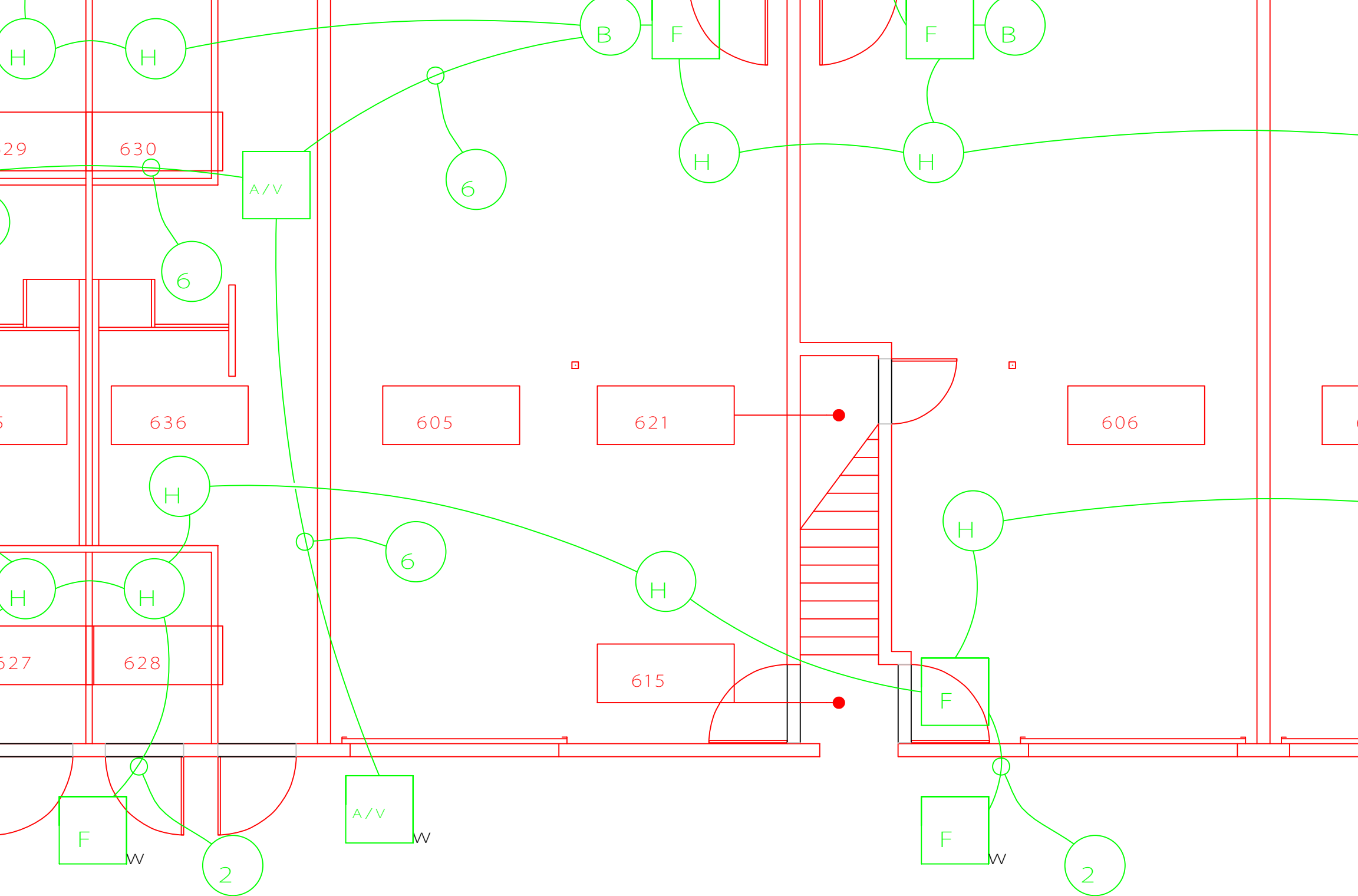
AFS PROJECT NO:	
CAD FILE NAME:	M1169E2.dwg
DESIGNED BY:	CDP
DRAWN BY:	LAL
EDITED BY:	LAL
CHECKED BY:	CDP
SCALE:	AS SHOWN
PLOT SCALE:	1:1

SHEET TITLE

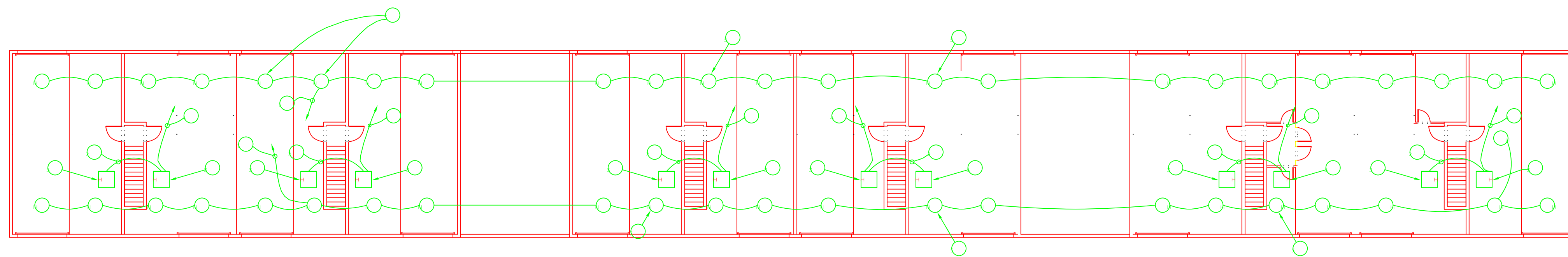
REPAIR FIRE ALARM SYSTEM
INTEGRATED SUPPORT COMMAND
MIAMI BEACH FLORIDA
FIRING RANGE BLDG
ELECTRICAL
FIRE ALARM SYSTEM BLOCK DIAGRAM

REVIEWED BY:	REVIEWED BY:	REVIEWED BY:
PROJECT ENG.	BRANCH CHIEF	TECH. DIRECTOR

PROJECT NUMBER	DRAWING NUMBER
32 - M04012	M1169 - D
DISCIPLINE/SHT NO	SHEET OF 2
E - 2	5

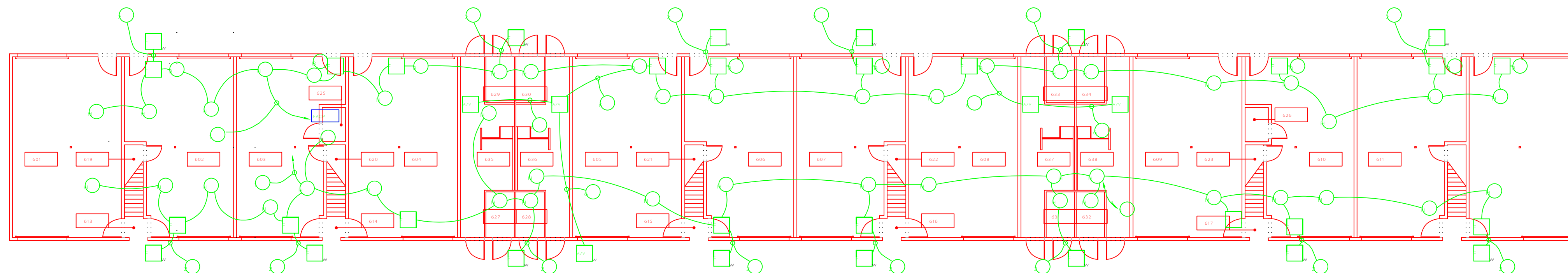


GROUND FLOOR PLAN



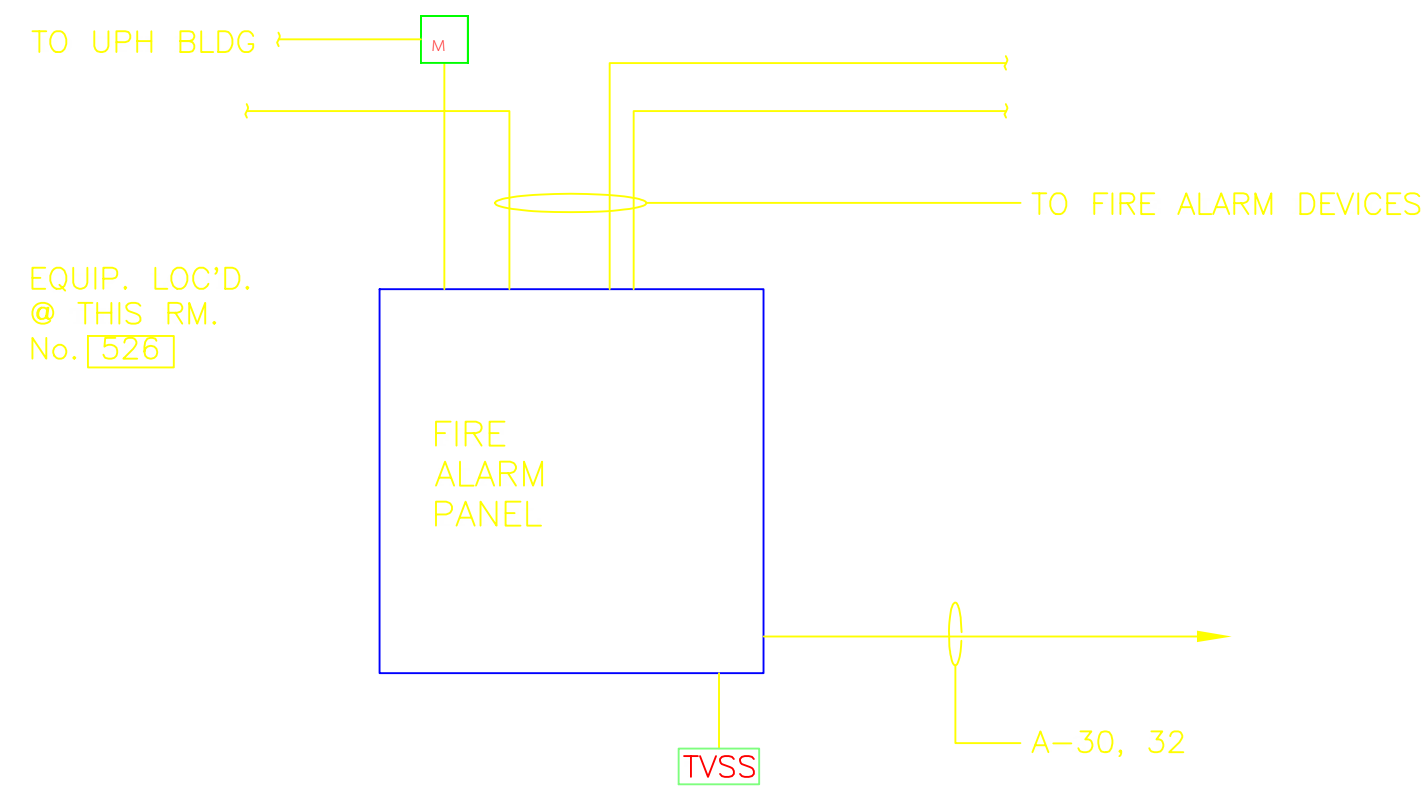
UPPER LEVEL FLOOR PLAN

SCALE: 1/16" = 1'-0"



GROUND FLOOR PLAN

SCALE: 1/16" = 1'-0"



FIRE ALARM RISER DIAGRAM

SCALE: NTS

KEYNOTES

- 1. EXIST FIRE ALARM CONDUCTORS AND CONDUIT TO FIRE ALARM CONTROL PANEL (F.A.C.P.) IN ROOM 625.
- 2. PROVIDE 2#14 THW IN 3/4" EMT.
- 3. NEW DEVICE LOCATION.
- 4. PROVIDE 2#14 THW IN 3/4" EMT TO NEAREST SIGNALING DEVICE AT LOWER LEVEL.
- 5. MOVE BELOW CEILING.
- 6. PROVIDE 4#14 THW IN 3/4" EMT.

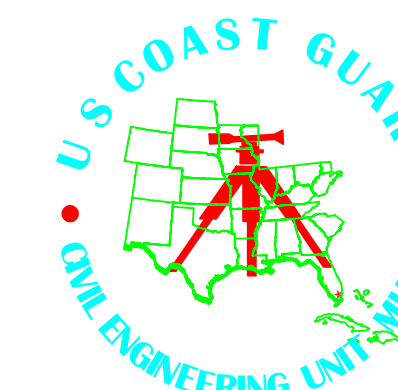
LEGEND

- [FACP] REPLACE EXIST ZONED PANEL WITH NEW ADDRESSABLE FIRE ALARM CONTROL PANEL
- [TVSS] EXIST TRANSIENT VOLTAGE SURGE SUPPRESSOR TO REMAIN
- [M] EXIST ADDRESSABLE MODULE TO REMAIN
- [H] REPLACE EXIST HEAT DETECTOR WITH NEW ADDRESSABLE HEAT DETECTOR
- [P] REPLACE EXIST MANUAL PULL STATION WITH NEW ADDRESSABLE MANUAL PULL STATION
- [B] REPLACE EXIST FIRE ALARM BELL WITH A NEW HORN
- [E] PROVIDE NEW WEATHER PROOF ADDRESSABLE FIRE ALARM MANUAL PULL STATION
- [W] PROVIDE NEW FIRE ALARM HORN/STROBE COMBINATION APPLIANCE (W = WEATHERPROOF)
- HOMERUN TO FACP

CONSULTANTS

U. S. COAST GUARD
CIVIL ENGINEERING UNIT

MIAMI



USCG, CEU MIAMI
1500B SW 117TH AVE
MIAMI, FLORIDA 33177

ISSUE		
MARK	DATE	DESCRIPTION
	12/02/05	FINAL

AFE PROJECT NO.	
CAD FILE NAME	M1169D3.dwg
DESIGNED BY	CDP
DRAWN BY	LAL
EDITED BY	LAL
CHECKED BY	CDP

SCALE: AS SHOWN PLOT SCALE: 1:1

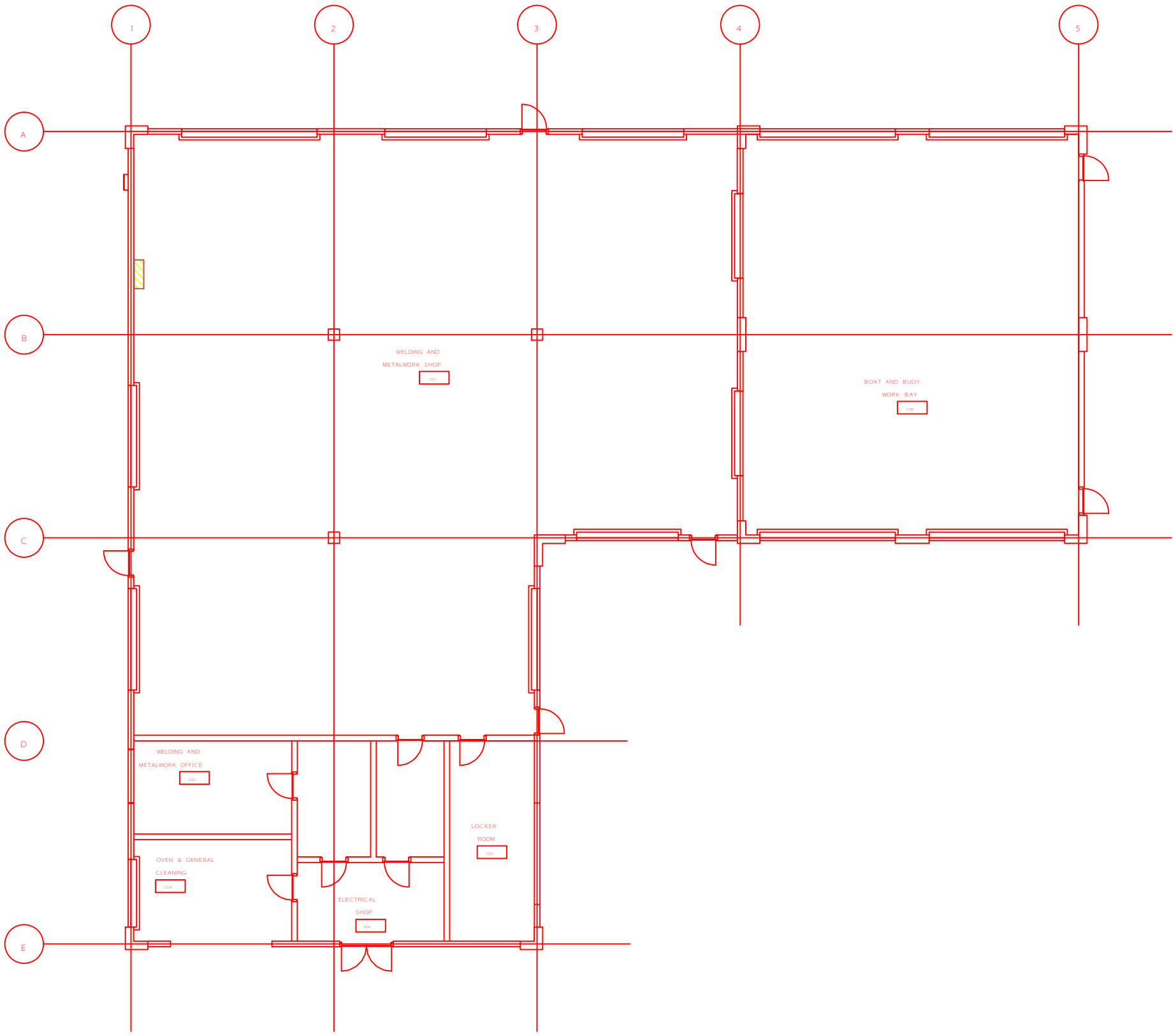
SHEET TITLE
REPAIR FIRE ALARM SYSTEMS
INTEGRATED SUPPORT COMMAND
MIAMI BEACH FL
OPS BUILDING
ELECTRICAL
FLOOR PLANS

REVIEWED BY	REVIEWED BY	REVIEWED BY
PROJECT ENG.	BRANCH CHIEF	TECH. DIRECTOR

APPROVING OFFICER	DATE
-------------------	------

PROJECT NUMBER	DRAWING NUMBER
32 - M04012	M1169 - D

DISCIPLINE/SHEET NO.	SHEET OF 3
E - 3	5



1

2

3

4

5

A

B

C

D

E

WELDING AND METALWORK SHOP

101

BOAT AND BUOY WORK BAY

100

WELDING AND METALWORK OFFICE

102

LOCKER ROOM

103

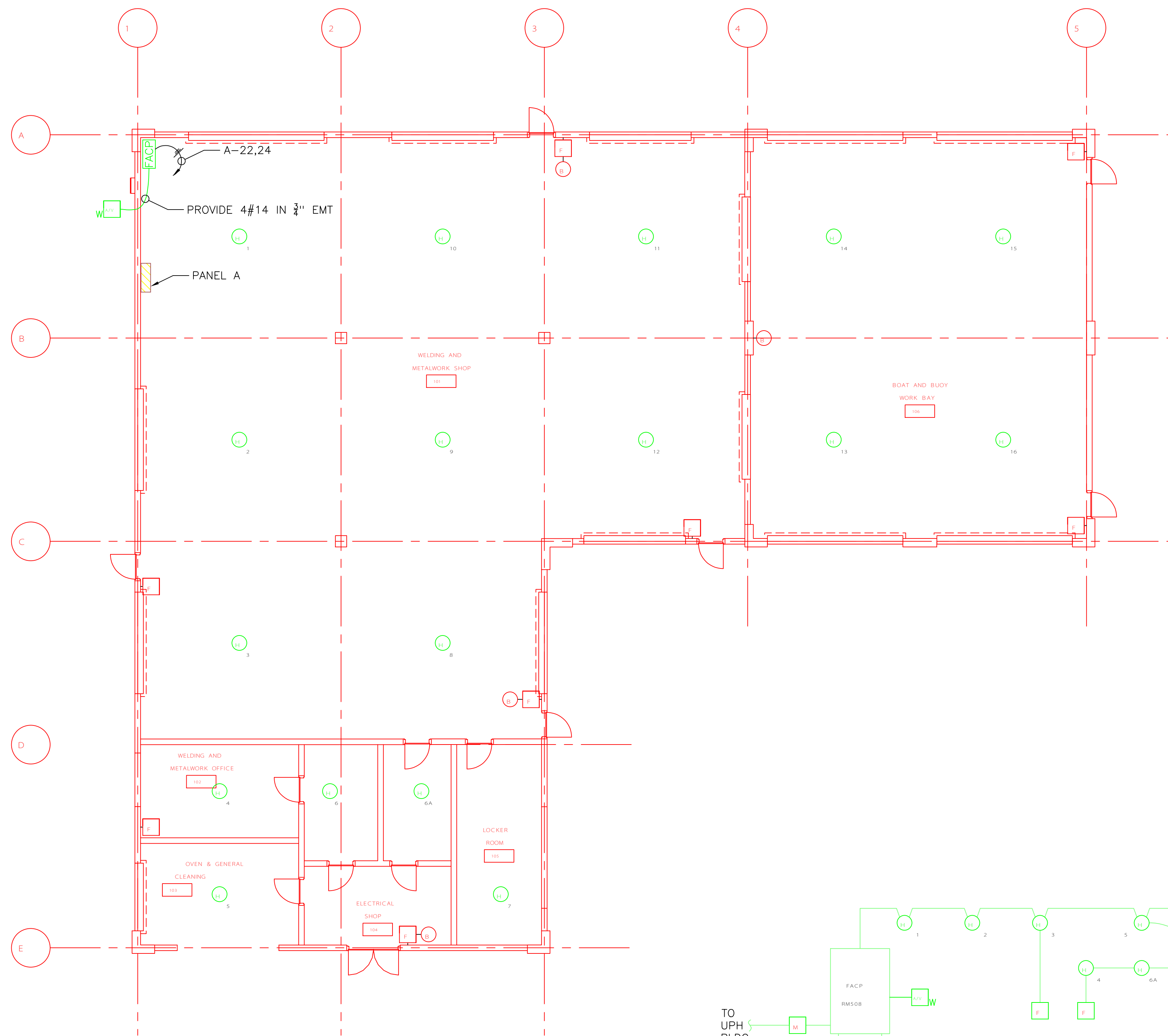
OVEN & GENERAL CLEANING

105

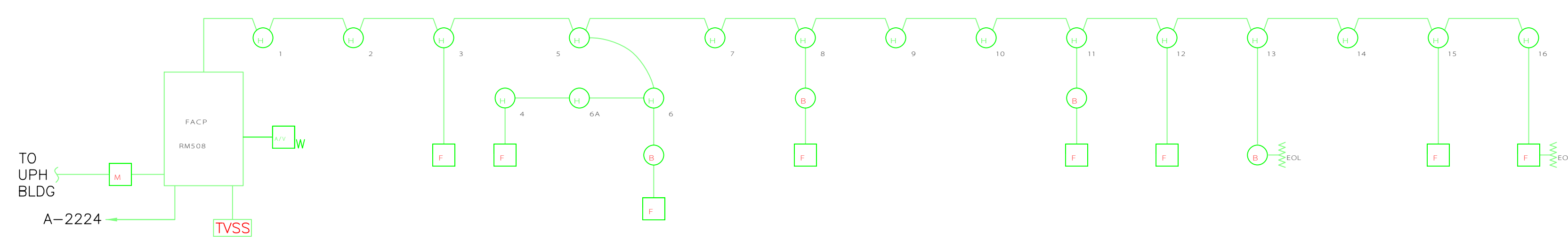
ELECTRICAL SHOP

104



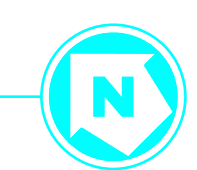


- LEGEND**
- FACP REPLACE EXIST PANEL WITH RELOCATED 8-ZONE FIRE ALARM CONTROL PANEL FROM BLDG #7
 - LD REPLACE EXIST HEAT DETECTOR WITH NEW HEAT DETECTOR
 - F EXISTING MANUAL PULL STATION TO REMAIN
 - B EXIST BELL TO REMAIN
 - M EXIST ADDRESSABLE INTERFACE MODULE TO REMAIN
 - TVSS EXIST (LUND) ENCLOSED POWER TRANSIENT VOLTAGE SURGE SUPPRESSOR TO REMAIN



SHOPS BUILDING 8 FLOOR PLAN

SCALE: 1/8" = 1'-0"

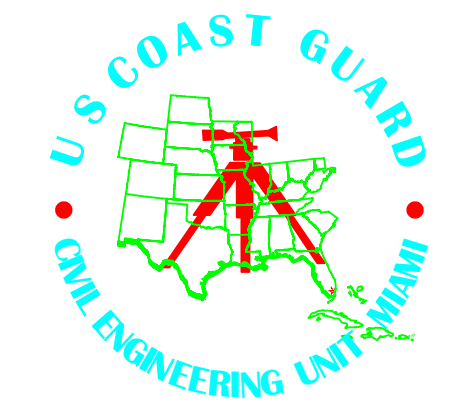


FIRE ALARM RISER DIAGRAM

SCALE: NTS

CONSULTANTS

U. S. COAST GUARD
CIVIL ENGINEERING UNIT
MIAMI



USCG, CEU MIAMI
15608 SW 117TH AVE
MIAMI, FLORIDA 33177

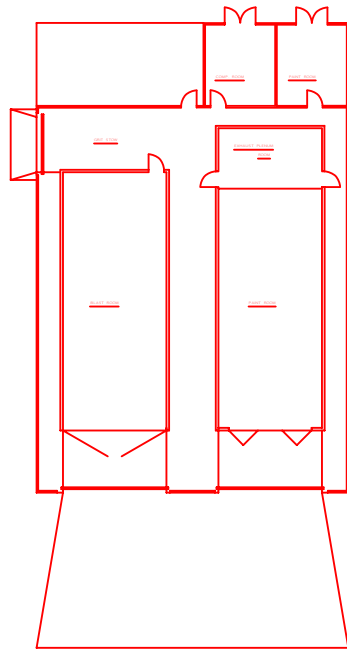
MARK	DATE	DESCRIPTION
	12/02/05	FINAL

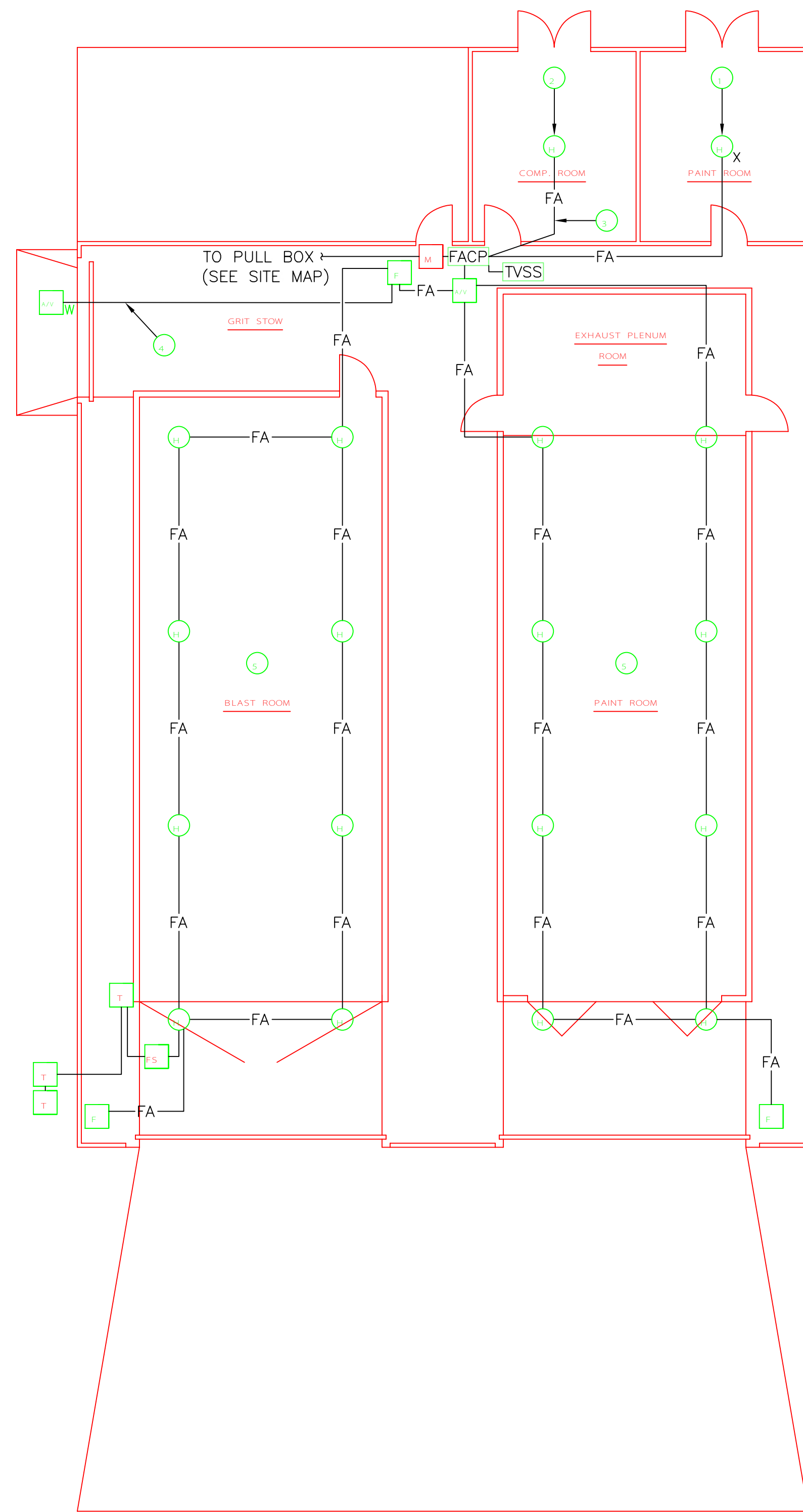
APR PROJECT NO:	
CAD FILE NAME:	M1169D.dwg
DESIGNED BY:	CDP
DRAWN BY:	LAL
EDITED BY:	LAL
CHECKED BY:	CDP
SCALE:	AS SHOWN
PLOT SCALE:	1:1

REPAIR FIRE ALARM SYSTEM
INTEGRATED SUPPORT COMMAND
MIAMI BEACH FLORIDA
SHOPS BLDG. 8
ELECTRICAL
FLOOR PLAN & RISER DIAGRAM

REVIEWED BY:	REVIEWED BY:	REVIEWED BY:
PROJECT ENG.	BRANCH CHIEF	TECH. DIRECTOR
APPROVING OFFICER		DATE

PROJECT NUMBER	DRAWING NUMBER
32 - M04012	M1169 - D
DISCIPLINE/SHEET NO	SHEET OF 4
E - 4	5





SANDBLAST & PAINT BUILDING FLOOR PLAN - ELECTRICAL

SCALE: 1/8" = 1'-0"

KEYNOTES

- 1 REPLACE EXISTING NON-EXPLOSION-PROOF HEAT DETECTOR WITH EXPLOSION-PROOF HEAT DETECTOR.
- 2 PROVIDE NEW HEAT DETECTOR IN THIS ROOM. CONNECT TO UNUSED ZONE.
- 3 PROVIDE NEW 2#14 WIRES IN 1/2" EMT.
- 4 PROVIDE NEW 4#14 IN 3/4" EMT.
- 5 DETECTORS IN THIS AREA ARE LOCATED OUTSIDE AND ABOVE THE BLAST AND PAINT ROOMS.

LEGEND

- FACP** EXIST SURFACE-MOUNTED, 8-ZONE SIMPLEX 4004 FIRE ALARM CONTROL PANEL TO REMAIN
- NV** REPLACE HORN WITH THE COMBINATION HORN/STROBE
- F** REPLACE EXISTING MANUAL PULL STATION WITH NEW PULL STATION
- L** REPLACE EXISTING HEAT DETECTOR WITH THE NEW HEAT DETECTOR (X= EXPLOSION-PROOF)
- FS** EXIST FLOW SWITCH TO REMAIN
- T** EXIST TAMPER SWITCH TO REMAIN
- FA** EXIST FIRE ALARM WIRING AND CONDUIT TO REMAIN
- M** EXIST ADDRESSABLE MODULE TO REMAIN
- TVSS** PROVIDE TRANSIENT VOLTAGE SURGE SUPPRESSOR PER KEYNOTE ON SHEET E-2
- NVW** PROVIDE NEW WEATHERPROOF FIRE ALARM HORN/STROBE COMBINATION APPLIANCE

CONSULTANTS

U. S. COAST GUARD
 CIVIL ENGINEERING UNIT
 MIAMI

U. S. COAST GUARD
 CIVIL ENGINEERING UNIT
 MIAMI

MIAMI



USCG, CEU MIAMI
 15008 SW 117TH AVE
 MIAMI, FLORIDA 33177

ISSUE		
MARK	DATE	DESCRIPTION
	12/02/05	FINAL

APP. PROJECT NO.	
CAD FILE NAME:	M1169E5.dwg
DESIGNED BY:	CDP
DRAWN BY:	LAL
EDITED BY:	LAL
CHECKED BY:	CDP
SCALE:	AS SHOWN PLOT SCALE: 1/8"

SHEET TITLE
 REPAIR FIRE ALARM SYSTEMS
 INTEGRATED SUPPORT COMMAND
 MIAMI BEACH FL
 SAND BLAST & PAINT BLDG
 ELECTRICAL
 FLOOR PLAN, NOTES & DETAILS

REVIEWED BY:	REVIEWED BY:	REVIEWED BY:
PROJECT ENG.	BRANCH CHIEF	TECH. DIRECTOR
APPROVING OFFICER		DATE

PROJECT NUMBER	DRAWING NUMBER
32 - M04012	M1169 - D
DISCIPLINE/SHEET NO.	SHEET OF 5
E - 5	5