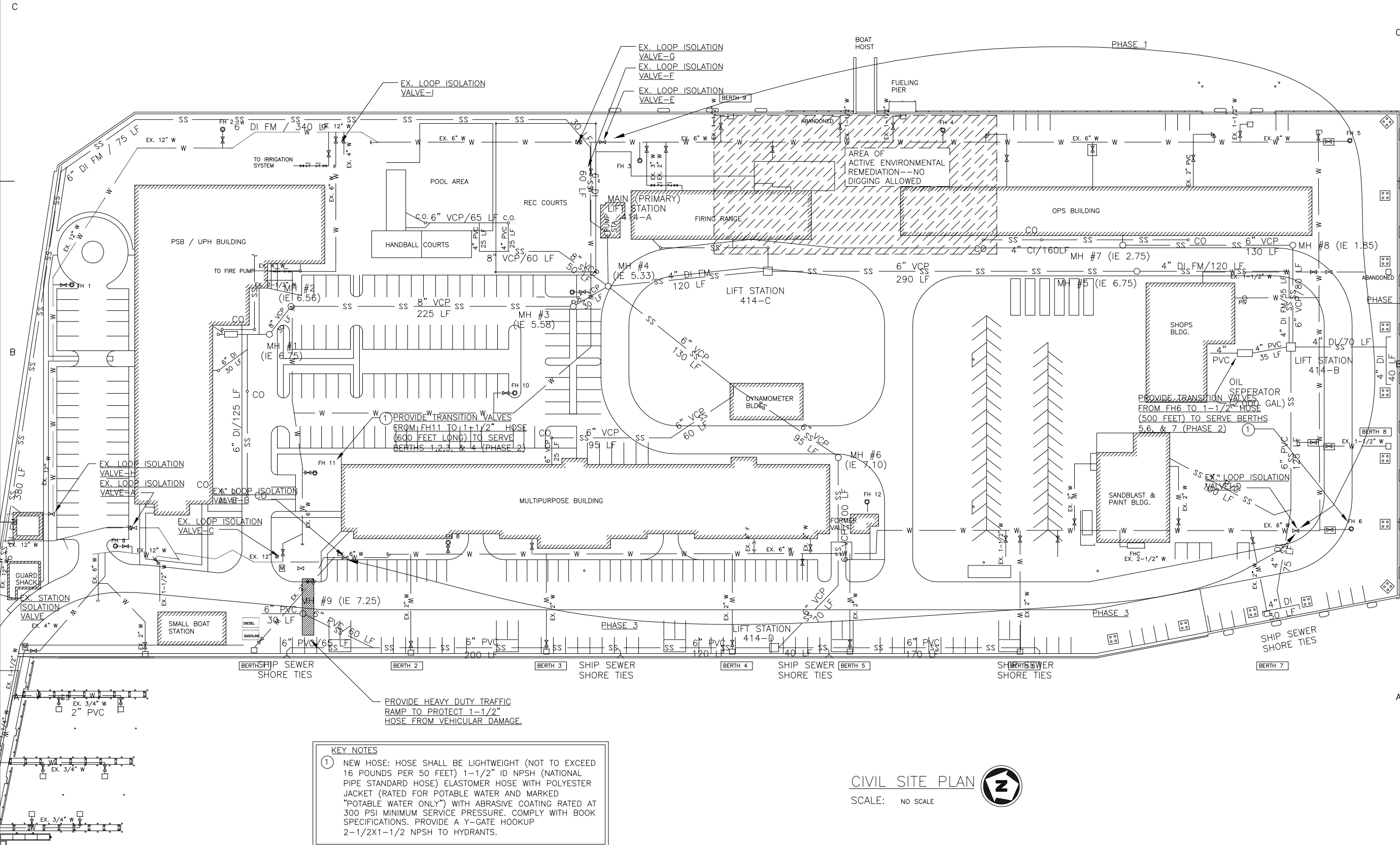


PHASE 1: CLOSE VALVES E&D; REPLACE POTABLE WATER SHORE TIES AT BERTH 8 AND 9. TEST WATER AND OPEN ALL VALVES.

PHASE 2: INSTALL THREE 5-GALLON DRINKING WATER CONTAINERS AND DISPENSERS (15 GALLONS PER DAY FOR 14 DAYS) AND PROVIDE PORTABLE TRAILER TOILETS WITH HANDWASH STATIONS. PROVIDE REDUCER VALVES FROM FH11 AND FH6 TO 1-1/2 HOSE TO SERVE BERTHS 1,2,3,4,5,6 AND 7.

PHASE 3: CLOSE VALVES B&D; REPLACE POTABLE WATER SHORE TIES AT BERTH 1,2,3,4,5,6 AND 7. INDEPENDENTLY TEST WATER SUPPLY AND PROVIDE WRITTEN DOCUMENTATION OF RESULTS OPEN ALL VALVES UPON WRITTEN RECEIPT OF POTABLE WATER.

PHASE 4: REPLACE EXISTING VALVE BOXES (BERTHS 1,2,3,4,5,6,7,8,9) WITH NEW ALUMINUM VALVE BOXES (TYP. OF NINE)



**KEY NOTES**

① NEW HOSE: HOSE SHALL BE LIGHTWEIGHT (NOT TO EXCEED 16 POUNDS PER 50 FEET) 1-1/2" ID NPSH (NATIONAL PIPE STANDARD HOSE) ELASTOMER HOSE WITH POLYESTER JACKET (RATED FOR POTABLE WATER AND MARKED "POTABLE WATER ONLY") WITH ABRASIVE COATING RATED AT 300 PSI MINIMUM SERVICE PRESSURE. COMPLY WITH BOOK SPECIFICATIONS. PROVIDE A Y-GATE HOOKUP 2-1/2X1-1/2 NPSH TO HYDRANTS.

CONSULTANTS

**U. S. COAST GUARD  
CIVIL ENGINEERING UNIT  
MIAMI**



USCG. CEU MIAMI  
15608 SW 117TH AVE  
MIAMI, FL 33177

ISSUE	DATE	DESCRIPTION
TW	06/27/06	BID DOCUMENTS
TW	06/20/06	99%
TW	06/01/06	95% MOD
TW	2/1/2006	95%
MARK		DESCRIPTION

A/E PROJECT NO:  
CAD FILE NAME: M1193\_C01.dwg  
DESIGNED BY: TW  
DRAWN BY: TW  
EDITED BY: TW  
CHECKED BY: TW

SCALE: AS SHOWN PLOT SCALE: 1:1

**SHEET TITLE**

POTABLE WATER SERVICE  
USCG ISC MIAMI  
MIAMI BEACH FLORIDA  
PIER SHORE TIES  
POTABLE WATER  
CIVIL DOMESTIC WATER PLAN

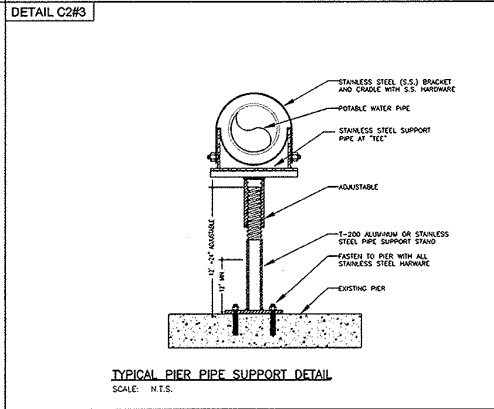
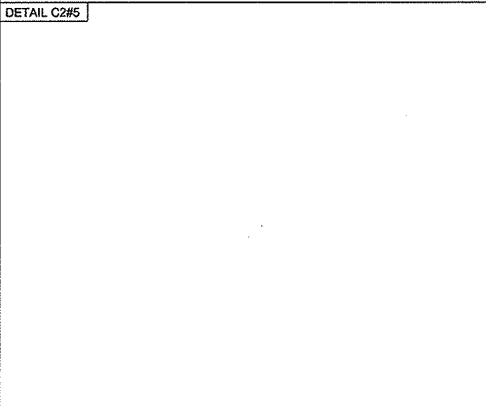
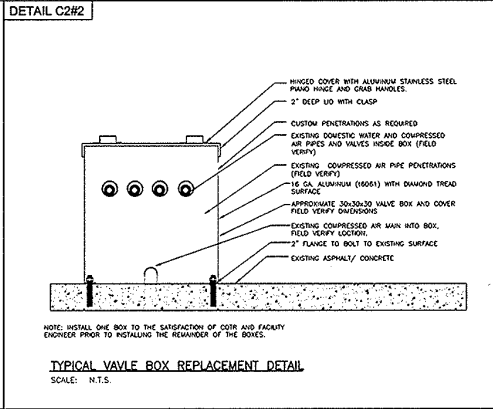
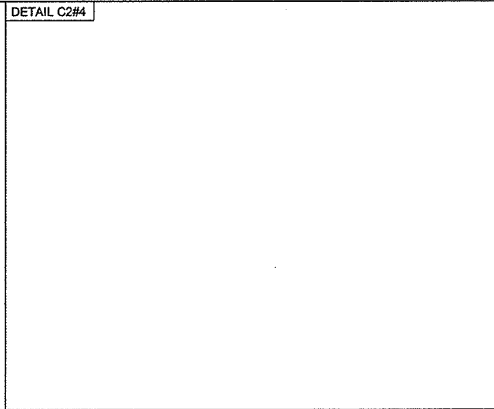
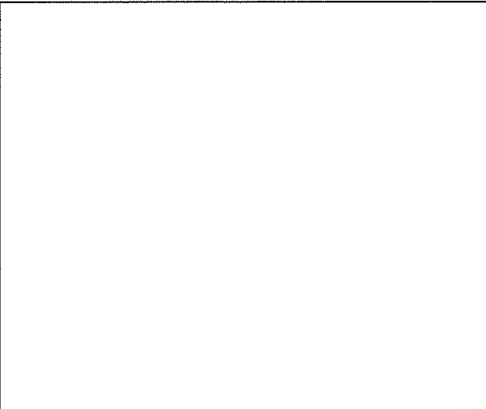
REVIEWED BY:	REVIEWED BY:	REVIEWED BY:
PROJECT ENG.	BRANCH CHIEF	TECH. DIRECTOR

APPROVING OFFICER \_\_\_\_\_ DATE \_\_\_\_\_

PROJECT NUMBER	DRAWING NUMBER
32-M02039	M1193-D

DISCIPLINE/SHT NO	SHEET 2 OF 3
C-1	

# FINAL DESIGN REVIEW



CONSULTANTS

U. S. COAST GUARD  
CIVIL ENGINEERING UNIT  
MIAMI



USCG. CEU MIAMI  
15608 SW 117TH AVE  
MIAMI, FL 33177

ISSUE	DATE	DESCRIPTION
TW	08/20/08	85% MOD
TW	06/01/06	95% MOD
TW	2/1/2008	85%
MARK	DATE	DESCRIPTION

A/E PROJECT NO:	
CAD FILE NAME:	M1193_C01.dwg
DESIGNED BY:	TW
DRAWN BY:	TW
EDITED BY:	TW
CHECKED BY:	TW
SCALE:	AS SHOWN PLOT SCALE: 1:1

**POTABLE WATER SERVICE**  
USCG ISC MIAMI  
MIAMI BEACH FLORIDA  
PIER SHORE TIES  
DETAILS  
CIVIL DOMESTIC WATER PLAN

REVIEWED BY:	REVIEWED BY:	DATE
PROJECT ENG.	BRANCH CHIEF	TECH. DIRECTOR

APPROVING OFFICER	DATE
-------------------	------

PROJECT NUMBER	DRAWING NUMBER
32-M02039	M1193-D

DISCIPLINE/SHT NO	SHEET	OF	3
C-2			