



Part Five: Prescriptive Technical Specifications

SOF SUPPORT ACTIVITY (SUPPACT) OPERATIONS FACILITY

**JOINT EXPEDITIONARY BASE LITTLE CREEK-FORT STORY
VIRGINIA BEACH, VA**

(FY'10 MILCON Project Number P-773)



**HBA ARCHITECTURE & INTERIOR DESIGN
CORRECTED FINAL SUBMISSION
JUNE 14, 2010**

SECTION 10 22 13

SEAL STORAGE CAGES

04/06

PART 1 GENERAL

1.1 REFERENCES

The publications listed below form a part of this specification to the extent referenced. The publications are referred to within the text by the basic designation only.

AMERICAN IRON AND STEEL INSTITUTE (AISI)

AISI SG-973 (2002) Cold-Formed Steel Design Manual

ASTM INTERNATIONAL (ASTM)

ASTM A 36/A 36M (2005) Carbon Structural Steel

1.2 SUBMITTALS

Government approval is required for submittals with a "G" designation; submittals not having a "G" designation are for Contractor Quality Control approval. The following shall be submitted in accordance with Section 01 33 00.05 20 CONSTRUCTION SUBMITTAL PROCEDURES:

SD-02 Shop Drawings

Seal Storage Cages

Show layout, details, materials, dimensions, finishes, and all information necessary for fabrication and installation.

SD-03 Product Data

Seal Storage Cages

Submit for each type of partition, door, and window.

1.2.1 LEED Submittal Requirements

- a. Recycled Content LEED: Provide cut sheets and invoices indicating material's recycled content percentages of post-consumer recycled content, and post-industrial recycled content.
- b. Regional Materials LEED: Provide cut sheets and invoices indicating location of final manufacturer's origin for all products and materials from within 500 mile radius.

1.3 DELIVERY, STORAGE, AND HANDLING

Deliver materials in manufacturer's original, unopened containers or packaging with labels intact and legible. Deliver, store, and handle materials so as to prevent damage. Replace damaged or defective materials with new.

1.4 DESCRIPTION OF WORK

Seal Storage Cages shall be all wire type, heavy duty for extra heavy industrial use, and shall be provided complete with fasteners, capping bars, adjustable floor sockets, bracing, sliding doors, hardware, shelves, wardrobe bar, cage name plate with changeable name plate, and other items necessary for a complete, useable, and rigid installation. Refer to typical elevation and details attached to this spec.

PART 2 PRODUCTS

2.1 LEED REQUIREMENTS

Recycled Content LEED: Ensure LEED certification by acquiring project products and materials containing recycled material to the greatest extent possible, and highest percentage of recycled content possible. Use materials with recycled content such that the sum of post consumer recycled content plus one-half of the post-industrial content meets or exceeds 5 percent of the total value of that product.

Manufacturer's Location for Regionally Manufactured Materials LEED: Ensure LEED certification by acquiring and using regionally manufactured project products from within a 500 mile radius to the greatest extent possible. Use and acquire material regionally such that 20 percent of all project material value is from within a 500 mile radius.

2.2 MATERIALS

2.2.1 Steel Shapes, Plates, and Bars

ASTM A 36/A 36M.

2.2.2 Cold-Formed Steel

AISI SG-973.

2.2.3 Wire Mesh

Carbon steel wire, woven diamond mesh, intermediate crimped.

2.2.4 Floor Sockets

Cast or forged steel or ductile iron, adjustable, approximately 2-1/2 inches high.

2.3 HEAVY DUTY PARTITIONS

2.3.1 Wire Mesh

6 gage wire, 2 inch by 1 inch rectangular mesh.

2.3.2 Panel Frames

1-1/4 inch by 1-1/4 inch by 1/8 inch steel angles.

2.3.3 Posts

Structural steel tubes, 2 inch by 2 inch by 1/8 inch.

2.4 SLIDING DOORS

Frames shall be 1-1/2 inch by 3/4 inch by 1/8 inch channels with 1-1/2 inch by 1/8 inch flat bar cover all around. Provide two four-wheel, roller bearing hangers and steel box track for each door.

2.5 DOOR OPENING FRAMES

Provide frames the same size and shape as the vertical frames for the mesh panels.

2.6 LOCKS

Provide each door with a latch and pad lock eye.

2.7 FABRICATION

2.7.1 Standard Panels

Wire shall be woven into rectangular mesh, intermediate crimped, and securely clinched to frames. Joints shall be mortised and tenoned. Wire shall be continuous. Panel vertical frames shall have 3/8 inch bolt holes 18 inches o.c. for heavy duty partitions.

2.7.2 Doors and Shelves

Construction shall be similar to that specified for panels. Wire mesh shall be the same as that used in the adjacent partition panels.

2.7.3 Finish

Thoroughly clean ferrous metal, treat with phosphate, and finish with black polyester powder coat.

PART 3 EXECUTION

3.1 LEED REQUIREMENTS

- a. Recycled Content LEED: Document cut sheets and invoices indicating material's recycled content percentages of post-consumer recycled content, and post-industrial recycled content for LEED submittal requirements, see Section 01 33 10.05 20 DESIGN SUBMITTAL PROCEDURES.
- b. Regional Materials LEED: Document cut sheets and invoices indicating location of final manufacturer's origin for all products and materials from within a 500 mile radius for LEED submittal requirements, see Section 01 33 10.05 20 DESIGN SUBMITTAL PROCEDURES.

3.2 WASTE MANAGEMENT LEED

Separate all waste material in accordance with the Construction Waste Management Plan. Place and/or dispose of all waste materials such that a minimum of 50 percent is diverted from landfill by either salvage, recycling plan, and/or reuse.

Provide invoices, plant slips, certification indicating total quantities of waste material, and amounts diverted by way of means as stated above for LEED submittal requirements, see Section 01 33 10.05 20 DESIGN SUBMITTAL PROCEDURES.

3.3 INSTALLATION

3.3.1 Wire Mesh Partitions

Install plumb, level, and true to line, within a tolerance of 1/8 inch in 10 feet or the height or run of the partition, if less than 10 feet. Anchor floor sockets to the floor with expansion bolts. Vertical frames and posts shall be bolted together with 3/8 inch bolts 18 inches o.c. for heavy duty partitions. Secure top frames to a continuous capping bar with 1/4 inch diameter U bolts not more than 28 inches o.c.

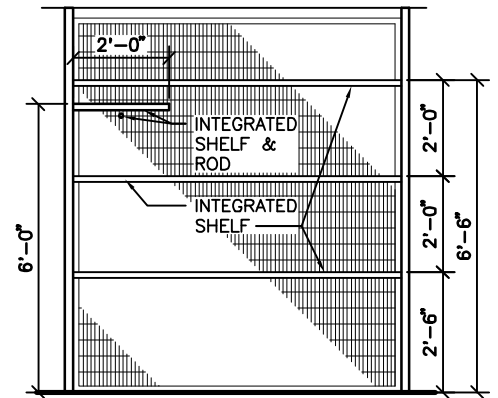
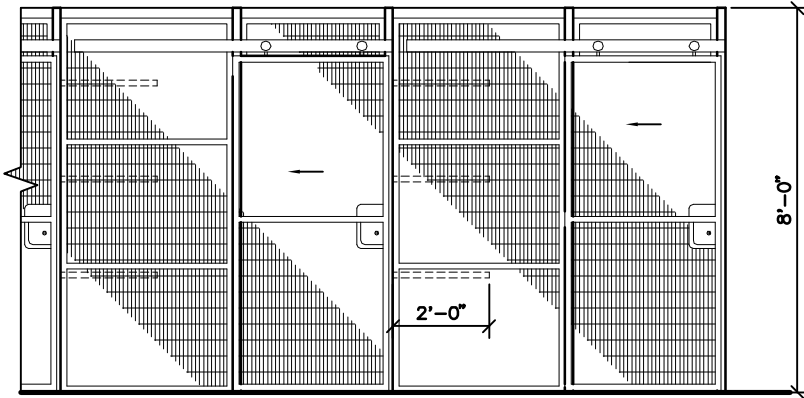
3.3.2 Doors

Install in accordance with the manufacturers' recommendations. Adjust as required so that doors and hardware operate freely and properly.

3.3.3 Touch-Up

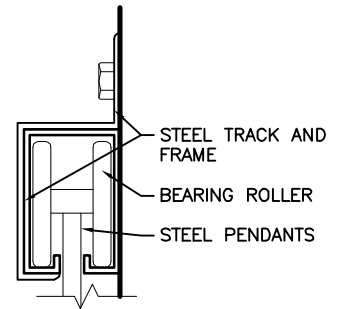
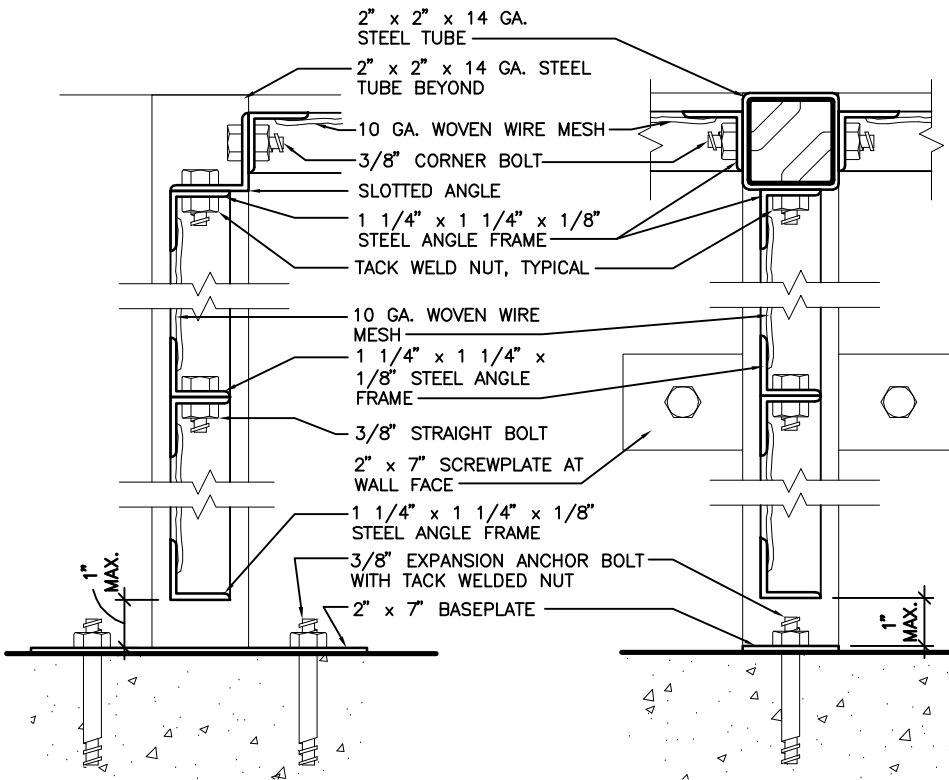
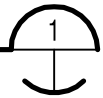
Clean and paint scratches, abrasions, and other damage to shop painted surfaces to match the shop-applied finish.

-- End of Section --



SEAL STORAGE CAGE ELEVATIONS

1/4" = 1'-0"



SLIDING DOOR RAIL

3" = 1'-0"

END WALL SECTION

3" = 1'-0"

MID WALL SECTION

3" = 1'-0"

CORNER

3" = 1'-0"



10 22 13 WIRE MESH PARTITIONS APPENDIX
P-773 SOF SUPACT OPERATIONS FACILITY
 JOINT EXPEDITIONARY BASE LITTLE CREEK - FORT STORY, VIRGINIA BEACH, VA

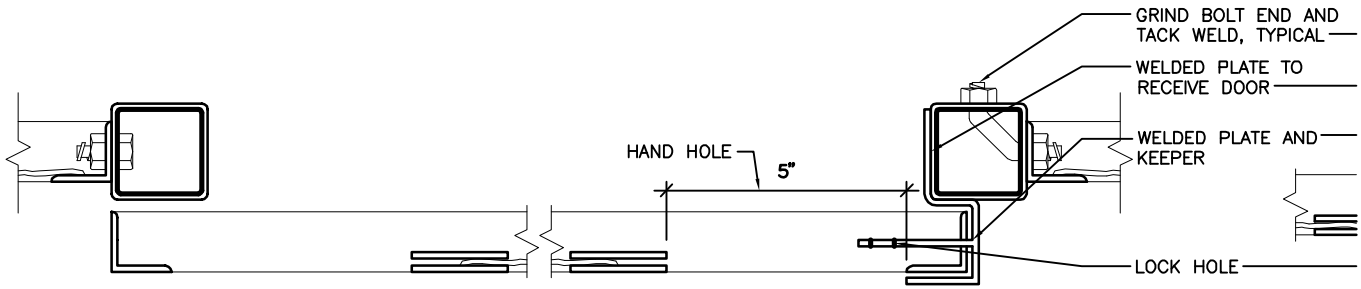
SEAL STORAGE CAGE DETAILS

HBA ARCHITECTURE & INTERIOR DESIGN, INC. ONE COLUMBUS CENTER, SUITE 1000
 VIRGINIA BEACH, VIRGINIA 23462 PHONE 757 490 9048 FAX 757 490 7081

Project: 815240

SKA001

Date: 3-26-10

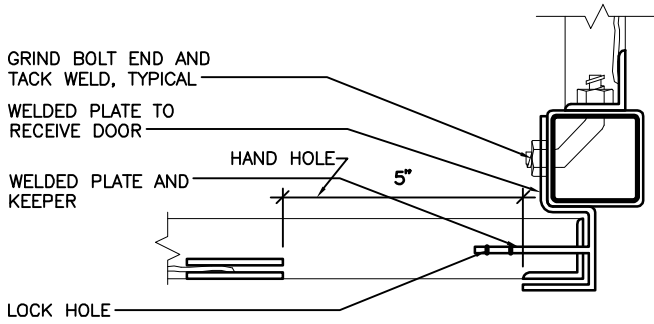


SLIDING DOOR END

3"=1'-0"

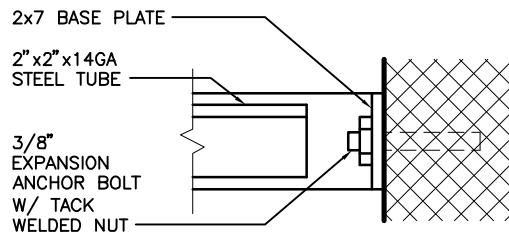
SLIDING DOOR LATCH

3"=1'-0"



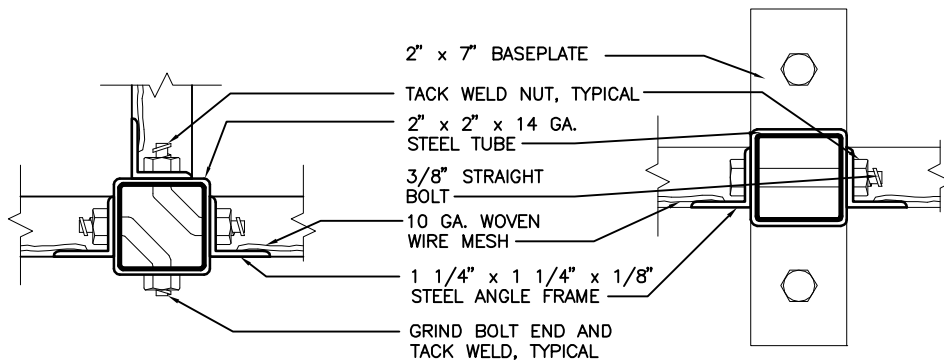
SLIDING DOOR LATCH CORNER

3"=1'-0"



DETAIL

3"=1'-0"



TUBE

3"=1'-0"

POST

3"=1'-0"



P-773 SOF SUPPACT OPERATIONS FACILITY
 JOINT EXPEDITIONARY BASE LITTLE CREEK - FORT STORY, VIRGINIA BEACH, VA

SEAL STORAGE CAGE DETAILS

HBA ARCHITECTURE & INTERIOR DESIGN, INC. ONE COLUMBUS CENTER, SUITE 1000
 VIRGINIA BEACH, VIRGINIA 23462 PHONE 757 490 9048 FAX 757 490 7081

Project: 815240

SKA002

Date: 3-26-10