

DUKW AUTOMOTIVE SHOP

SEE 2716-11-11-12 SHEET FOR
EXTERIOR WALL AND 2716-11-12-13-14-15
FOR REVISIONS.

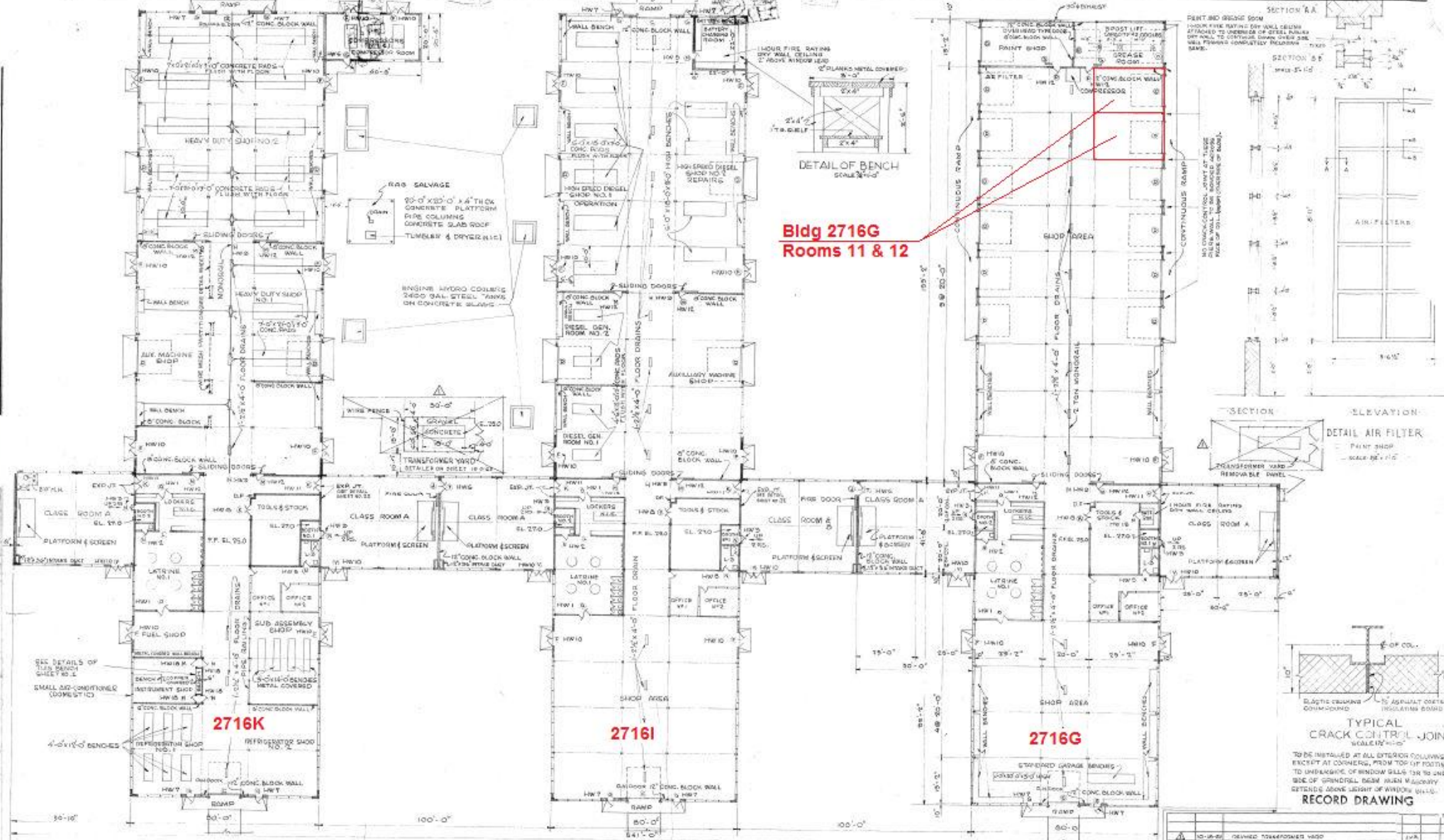
REVISION	DATE	DESCRIPTION	BY	APP.	APP.
1	10-20-50	DESIGNED TO BE REFORCED WOOD	JVA		

HILL & PETTIGRO AND ASSOCIATES ARCHITECTS INC. 1000 W. WASHINGTON ST. WOODWARD CLIVER & SMITH CONSULTING ENGINEERS - CIVIL & MECHANICAL	CORPS OF ENGINEERS U.S. ARMY OFFICE OF THE DISTRICT ENGINEER NORFOLK, VA.
--	--

SCALE: 1/4" = 1'-0"
 DATE: APRIL 1951
 SPECIFICATION: 670
 SHEET: 3 OF 62
 PROJECT: 29-03-01

APPROVED: *W. J. Maudslayi*
 APPROVED: *W. J. Maudslayi*
 APPROVED: *W. J. Maudslayi*
 APPROVED: *W. J. Maudslayi*

NORFOLK DISTRICT FILE NO. FE 200-2



**Bldg 2716G
Rooms 11 & 12**

2716K

2716I

2716G

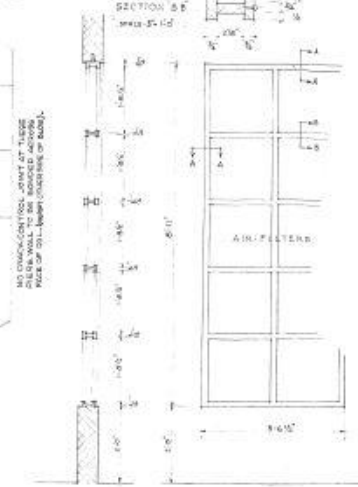
HEAVY DUTY DIESEL

HIGH SPEED DIESEL

DUKW AUTOMOTIVE SHOP

Bldg 2716

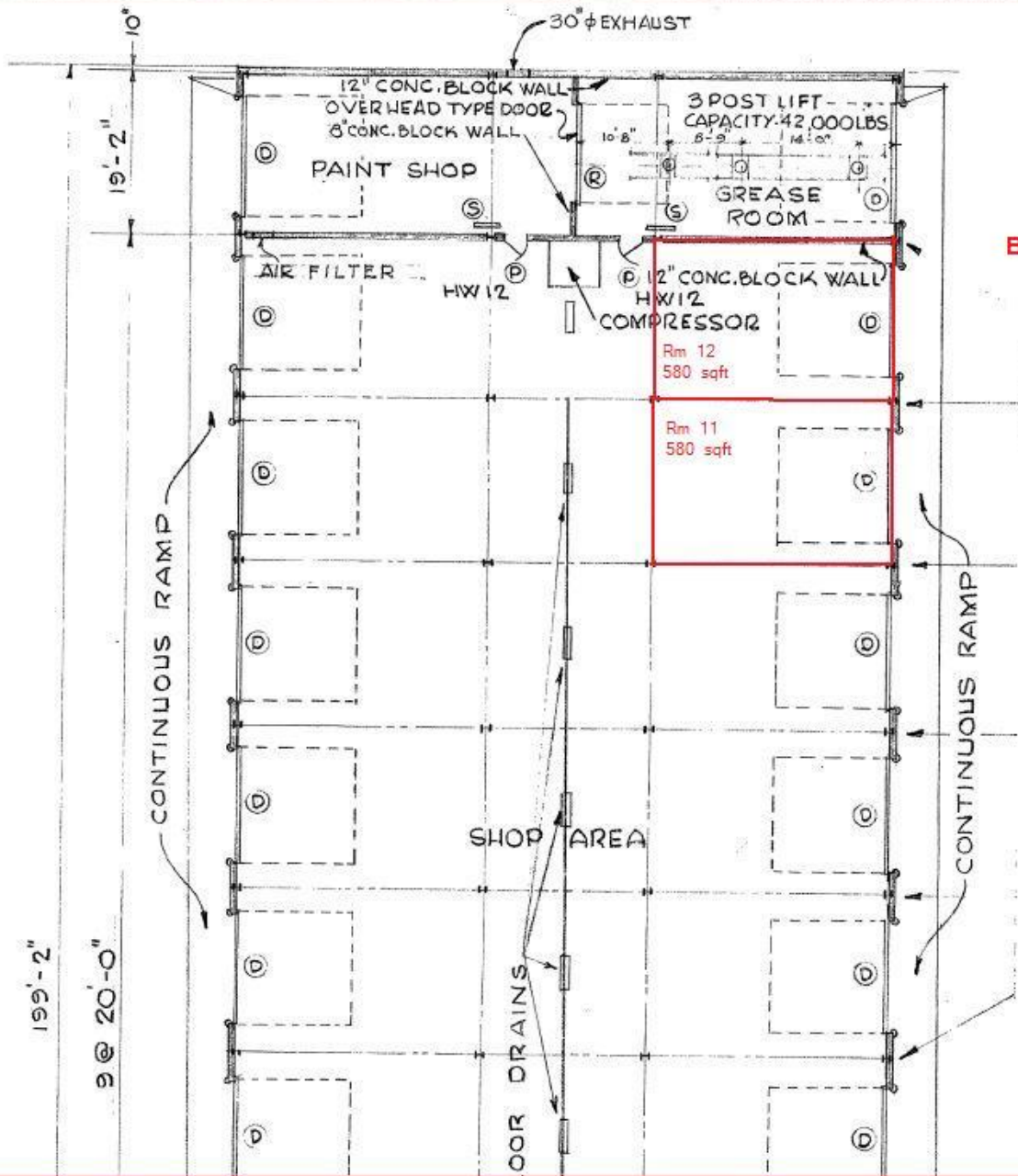
SECTION A-A
SECTION B-B
SECTION C-C



**TYPICAL
CRACK CONTROL JOINT**
TO BE INSTALLED AT ALL EXTERIOR COLUMN
EXCEPT AT CORNERS, FROM TOP UP TO
TO UNDERLAP OF WINDOW SILL (OR TO ONE
SIDE OF SPINDLE) FROM WIND MAJORITY
EXTENDING ABOVE HEIGHT OF WINDOW SILL.

RECORD DRAWING

DESIGNED	REVIEWED	DATE	BY
2795	2795	2795	2795
MILLS & PITTSFORD AND ASSOCIATES ARCHITECTS AND ENGINEERS 1000 WOODWARD AVENUE, SUITE 100 ALEXANDRIA, VIRGINIA 22304		CORPS OF ENGINEERS U.S. ARMY OFFICE OF THE DISTRICT ENGINEER FORT EUSTIS, VA. 22060, VA.	
SCHOOL BUILDINGS HEAVY DUTY DIESEL - HIGH SPEED DIESEL DUKW AUTOMOTIVE SHOP FLOOR PLANS			
APPROVED	DATE	SCALE	DATE
<i>[Signature]</i>	APR 1951	1/8" = 1'-0"	APR 1951
SHEET 3 OF 62			



Bldg 2716G

