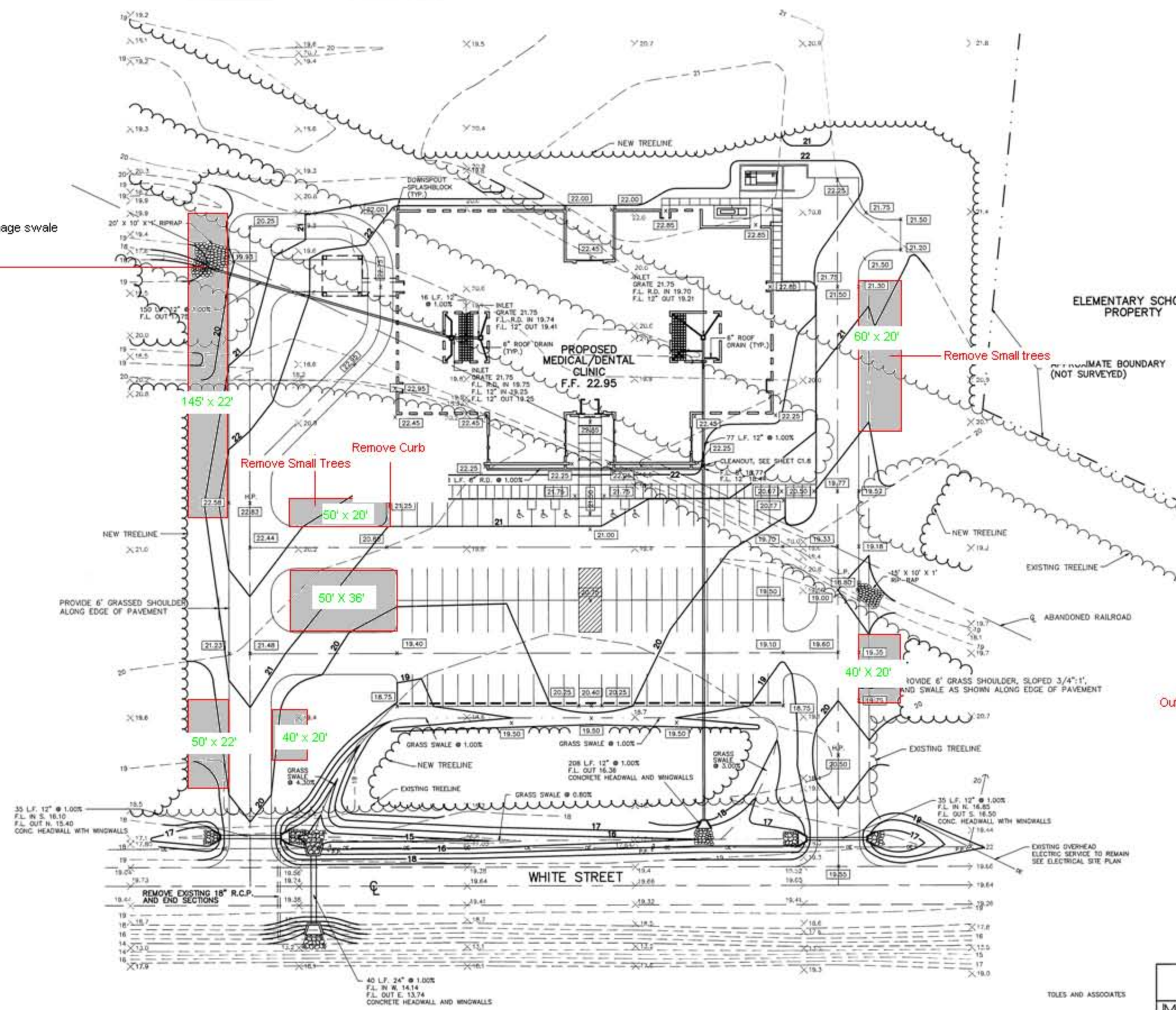


REVISIONS			
NO.	DESCRIPTION	DATE	APPROVED

Extend Drainage swale

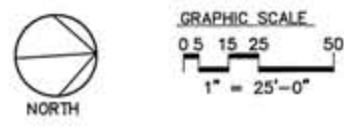


ELEMENTARY SCHOOL PROPERTY

Remove Small trees

Outlined Gray areas are new proposed Parking

- NOTES:**
- EXISTING CONDITIONS DATA AS PER TOPOGRAPHIC SURVEY BY JAMES E. STEWART AND ASSOCIATES, INC., P.O. DRAWER 976, JACKSONVILLE, N.C. 28541-0976, DATED 7/12/90.
 - SITE BENCHMARK = RAILROAD SPIKE ON WEST SIDE OF EXISTING POWER POLE LOCATED 226.9' NORTH OF NEW SOUTH DRIVE, 2' ABOVE GROUND, ELEV. 20.34



TOLES AND ASSOCIATES



JMGR INC		C1.2	
DEPARTMENT OF THE NAVY NAVAL FACILITIES ENGINEERING COMMAND		ATLANTIC DIVISION	
NAVAL STATION		NORFOLK, VA.	
MCAS NEW RIVER		JACKSONVILLE, NC	
MEDICAL/DENTAL CLINIC			
GRADING AND STORM DRAINAGE PLAN			
APPROVED DATE	SIZE	CODE	NAVFAC DRAWING NO.
ACTIVITY - SATISFACTORY TO	F	80091	4241656
APPROVED DATE	SCALE	SPEC.	CONTR. CONTR. NO.
FOR ETD FOR COMMANDER NAVFAC	1"=25'	05-90-079	N62470-90-8-0079
		DATE	SHEET 7 OF 88